
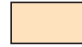




Generalized Geologic Map of Kansas

QUATERNARY SYSTEM

-  Loess and river-valley deposits
-  Sand dunes
-  Glacial drift deposits
-  Limit of glaciation in Kansas

NEOGENE SYSTEM



CRETACEOUS SYSTEM





JURASSIC SYSTEM



PERMIAN SYSTEM



CARBONIFEROUS SYSTEM

-  PENNSYLVANIAN SUBSYSTEM
-  MISSISSIPPIAN SUBSYSTEM

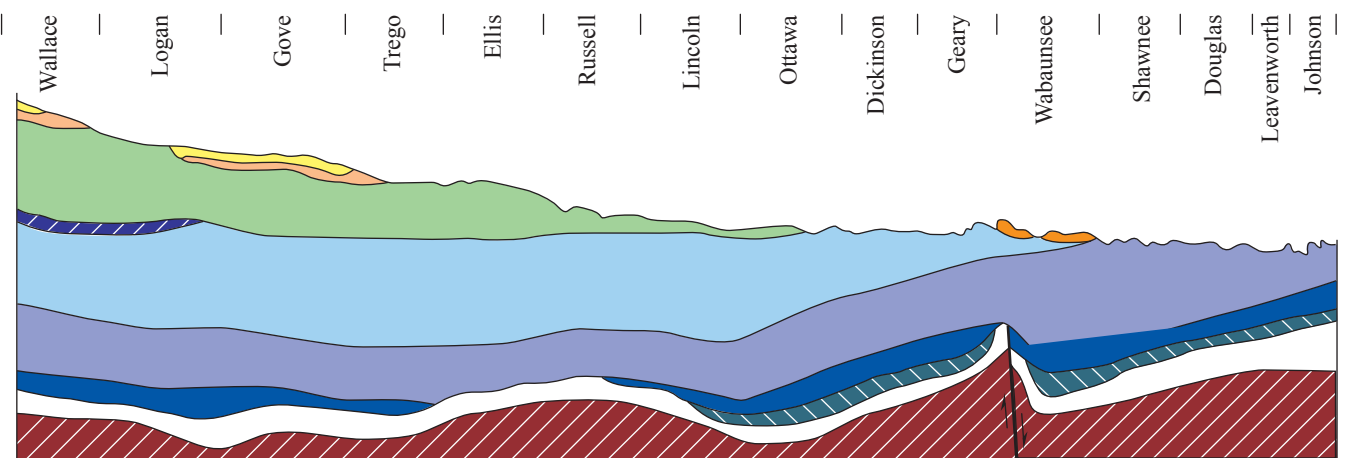
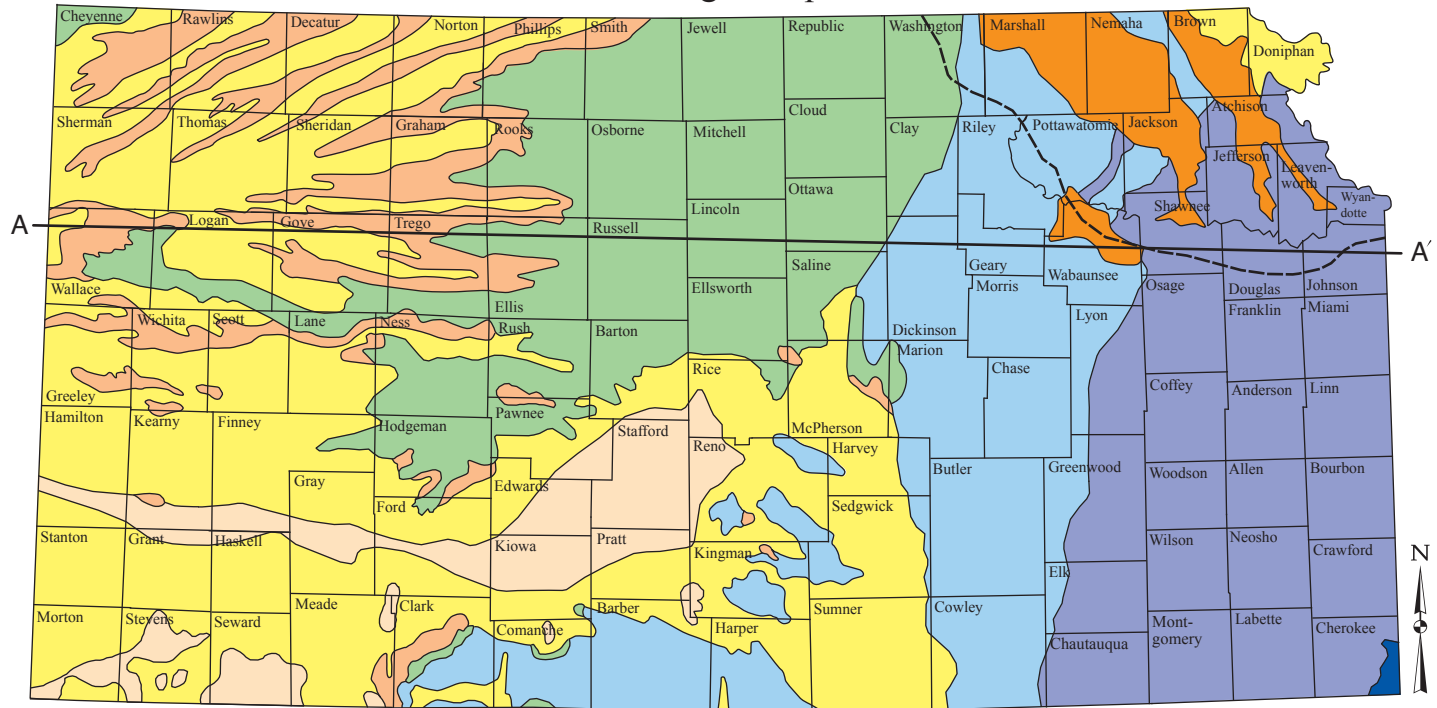
SILURIAN-DEVONIAN SYSTEM



CAMBRIAN-ORDOVICIAN SYSTEM

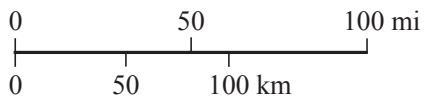


PRECAMBRIAN



A—A' Line of cross section

Geologic cross section below I-70



Kansas Geological Survey
 The University of Kansas
 1301 Constant Avenue
 Lawrence, Kansas 66047
www.kgs.ku.edu
 July 2015