


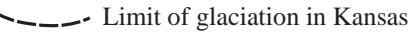


# Generalized Geologic Map of Kansas

## QUATERNARY SYSTEM (2.6 mya)

-  Loess and river-valley deposits
-  Sand dunes
-  Glacial drift deposits
-  Limit of glaciation in Kansas

## NEOGENE SYSTEM (23 mya)

-  Ogallala Formation

## CRETACEOUS SYSTEM (145 mya)




## JURASSIC SYSTEM (199 mya)




## PERMIAN SYSTEM (299 mya)



## CARBONIFEROUS SYSTEM

-  PENNSYLVANIAN SUBSYSTEM (318 mya)

-  MISSISSIPPIAN SUBSYSTEM (359 mya)

## SILURIAN-DEVONIAN SYSTEM (444 mya)



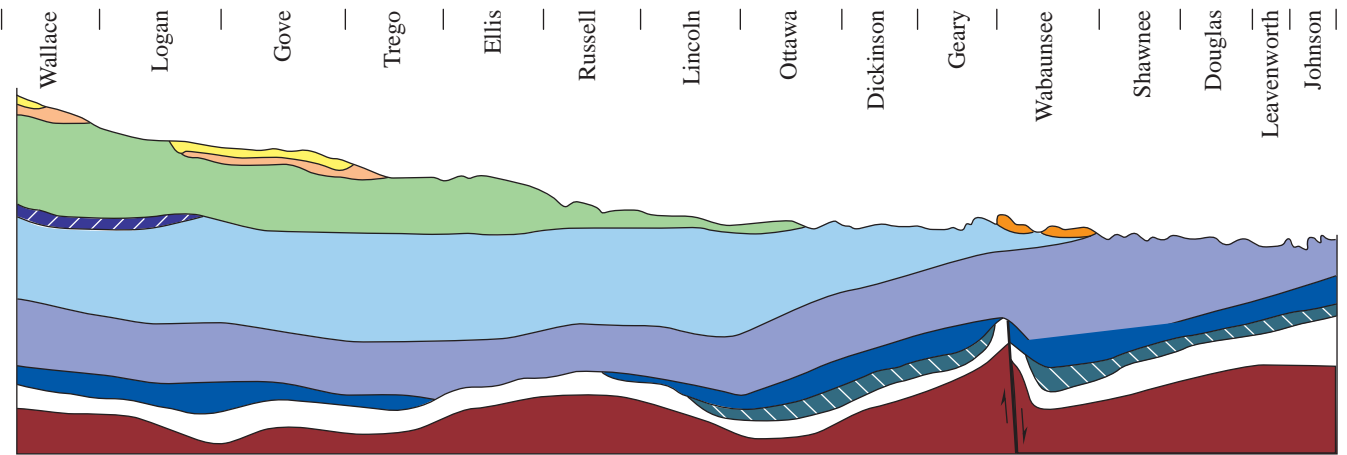
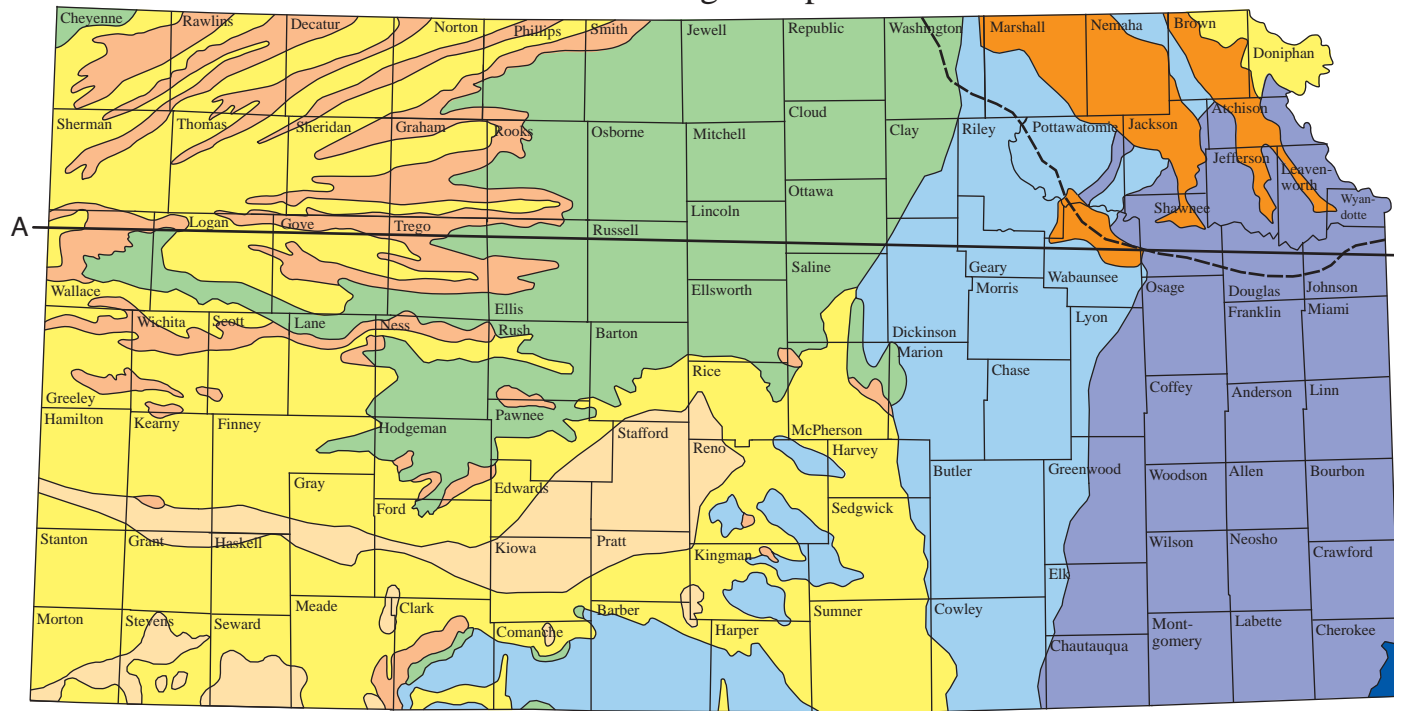
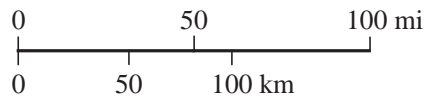
## CAMBRIAN-ORDOVICIAN SYSTEM (542 mya)



## ARCHEAN-PROTEROZOIC SYSTEM (4,600? mya) (previously referred to as Precambrian)



A—A' Line of cross section



Geologic cross section below I-70