

Sec. 18, T. 12 S., R. 4 E

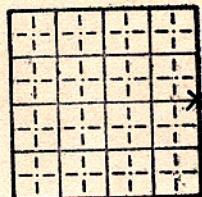
Dickinson Co.

2½ mi N of Chapman, center of eastern line

Measured by M. K. Elias

Date 1932

Remarks: V-11



Luta ls member

- 11 Ls, white, porous, with remains of seaweeds . . .5'
- 10 Mudstone, splitter, harder toward the top .. 3'
- 9 Mudstone, flaggy ..... 1'
- Cresswell ls member .....
- 8 Ls ..... .5'
- 7 Ls, flaggy to splitter, with echinoid re-  
mains ..... 3.5'
- 6 Ls ..... .5'
- 5 Ls, with zone of flint nodules below the mid-  
dle ..... 1.5'
- 4 Mudstone, splitter, with Myalina and other  
pelecypods ..... .8'

Grant sh member

- 3 Sh, with net of calcite veinlets ..... 5'
- 2 Sh ..... 5'

Stovall ls member

- 1 Ls almost entirely replaced by flint ..... 2.5'

