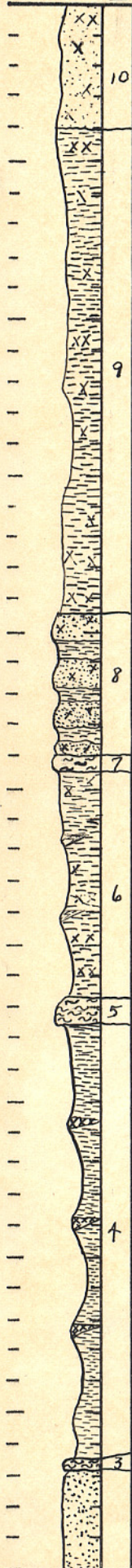


State Geological Survey of Kansas

Scale $\frac{1}{2}$ Features Unit Sec. 1 T. 32 S., R14W County Barber Date 1955



Locality description exposed along U. S. Highway 160 in the SE $\frac{1}{4}$ SE $\frac{1}{4}$

Measured by Ada Swineford

Remarks

No.	Description	Thickness
	FLOWERPOT SHALE	
10	Sandstone - very fine-grained, silty, friable, gypsiferous, pink (7.5YR7/4); forms slight ledge	4.0
9	Shale - slightly silty, gypsiferous, thin-bedded, reddish-brown	15.4
8	Sandstones, Gypsiferous, thin(0.5 foot), pink, inter-bedded with reddish-brown silty shales	4.5
7	Siltstone - sandy dolomitic, gypsiferous, white (2.5Y8/0) to pink	0.4
6	Shale - gypsiferous, weak-red (2.5YR5/2) mottled gray (7.5YR6/0)	7.3
5	Siltstone - sandy-light reddish-brown (5YR6/4), and inter-grown gypsum (selenite and satin spar)	0.9
4	Clay shale - blocky, reddish-brown (2.5YR4/4); contains numerous gypsum veins	13.5
3	Siltstone - argillaceous, sandy, light greenish-gray (5G7/1); contains a few thin streaks of clay shale and clear colorless gypsum veins. Very slightly calcareous	0.3

(CONTINUED ON NEXT PAGE)

State Geological Survey of Kansas

Scale

No.

Features

Unit

Sec. 1

T. 32

S., R 14W

County Barber

Date 1955

Locality description exposed along U. S. Highway 160 in the SE $\frac{1}{4}$ SE $\frac{1}{4}$

Measured by Ada Swineford

Remarks

No.

Description

Thickness

(CONTINUED FROM PREVIOUS PAGE)

- | | | |
|---|--|-----|
| 2 | Sandstone - very fine, and sandy siltstone; white (5YR8/1) mottled reddish-brown; cemented with gypsum. Coarser grained at the top | 5.0 |
| 1 | Clay shale - silty, blocky to splintery, reddish-brown (2.5YR4/4); contains numerous gypsum veins | 15. |