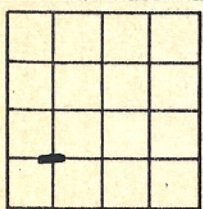
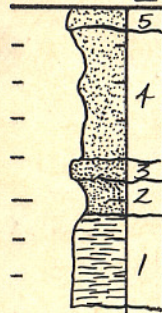


# State Geological Survey of Kansas

Scale No. Features Unit Sec. 28 T. 31 S. R. 11W County Barber Date 1955



Locality description Lower part of Cedar Hills sandstone in road cut in the SW  $\frac{1}{4}$

Measured by Ada Swineford

Remarks

No.	Description	Thickness
	CEDAR HILLS SANDSTONE	
5	Sandstone - very fine-grained, resistant, calcareous, red (2.5YR5/6) (white spots)	0.5
4	Sandstone - very fine-grained, silty, soft, friable, slightly calcareous, red (white spots)	3.5
3	Sandstone - very fine-grained, resistant, calcareous, red (white spots)	0.4
2	Sandstone, very fine-grained, silty, soft, friable, slightly calcareous, red (white spots)	0.8
1	Shale - silty, somewhat blocky, hard, slightly calcareous, red (2.5YR4/6)	2.1