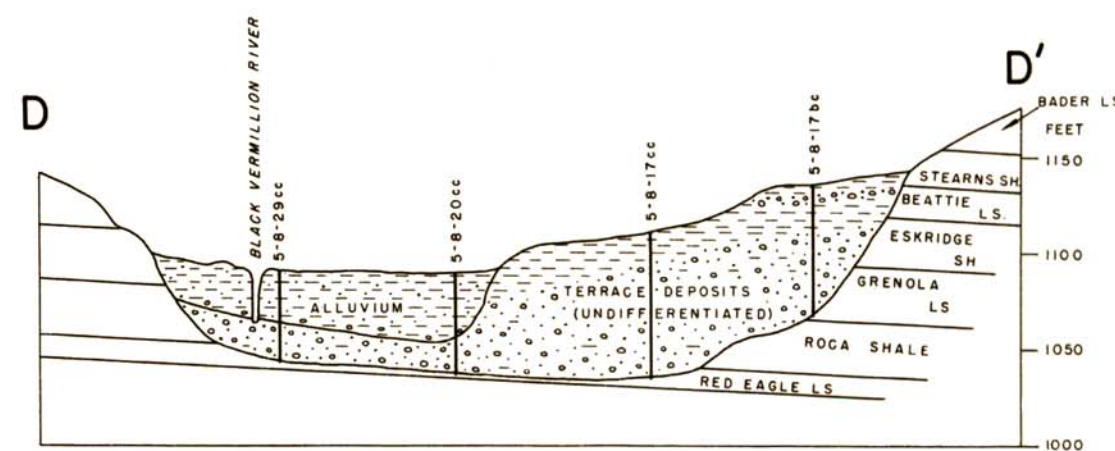
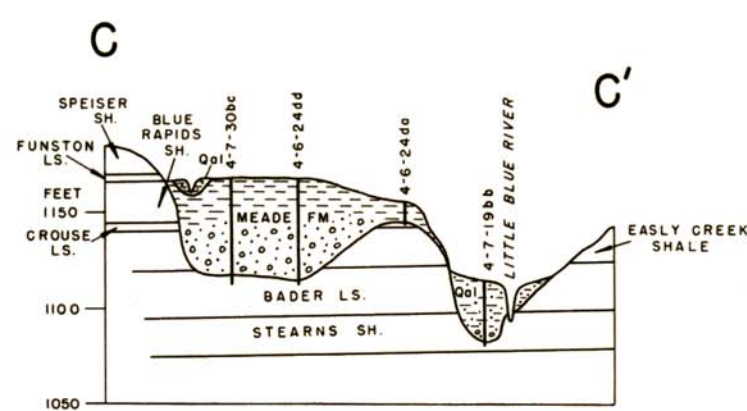
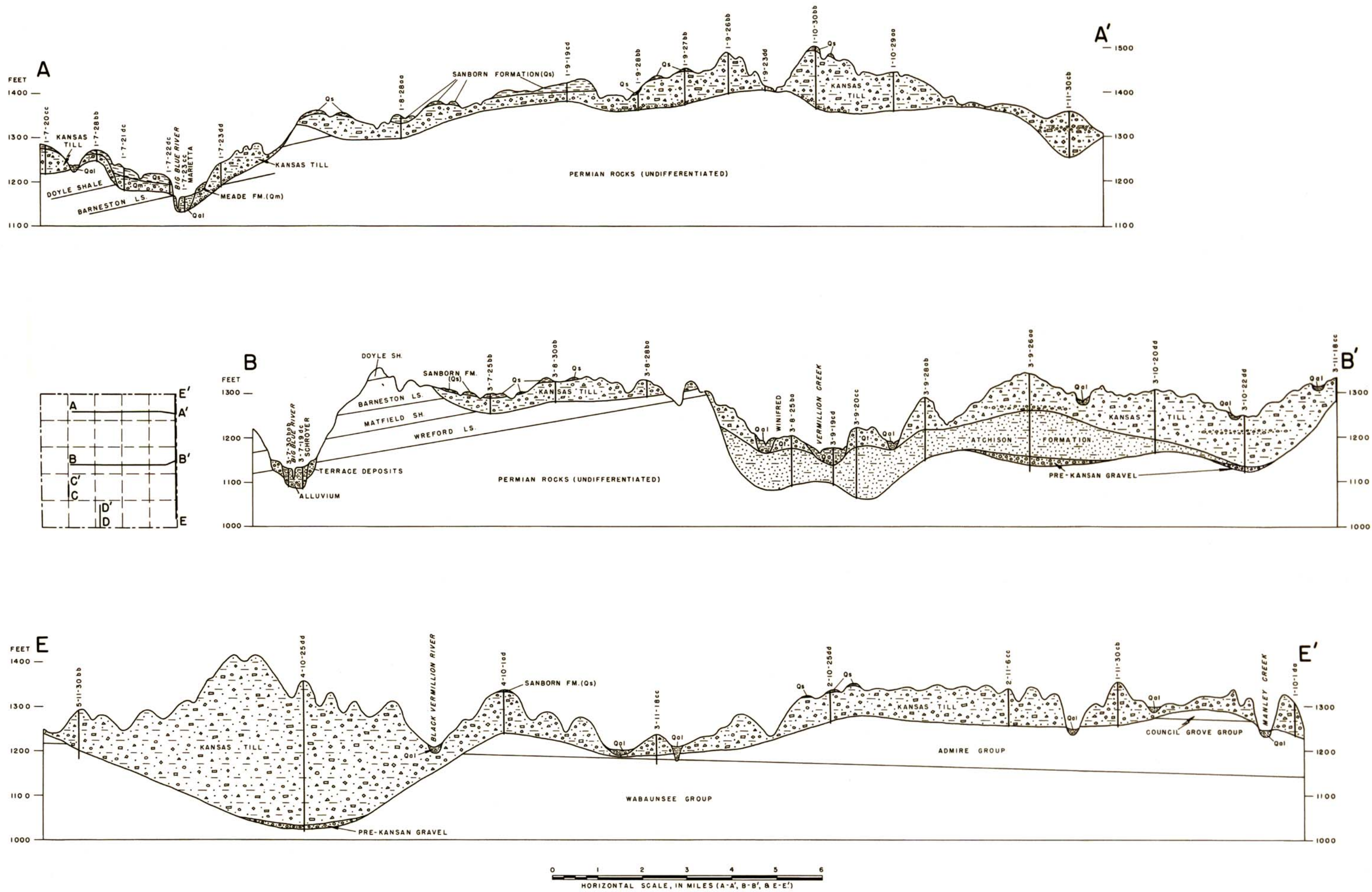


GEOLOGIC CROSS SECTIONS IN MARSHALL COUNTY, KANSAS

by Kenneth L. Walters, 1951

Bulletin 106, Plate 2

State Geological Survey of Kansas



0 1 2 3 4 5 6

HORIZONTAL SCALE, IN MILES (C-C' & D-D')

EXPLANATION

