

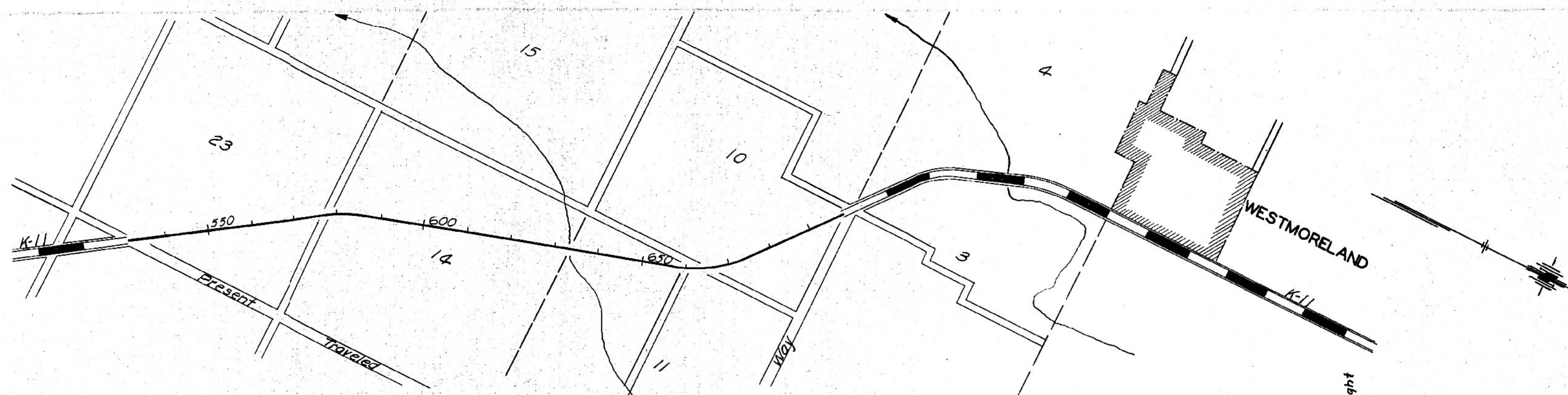
GEOLOGIC MAP
POTTAWATOMIE COUNTY

PROJ.99-75 F.A. 432 E

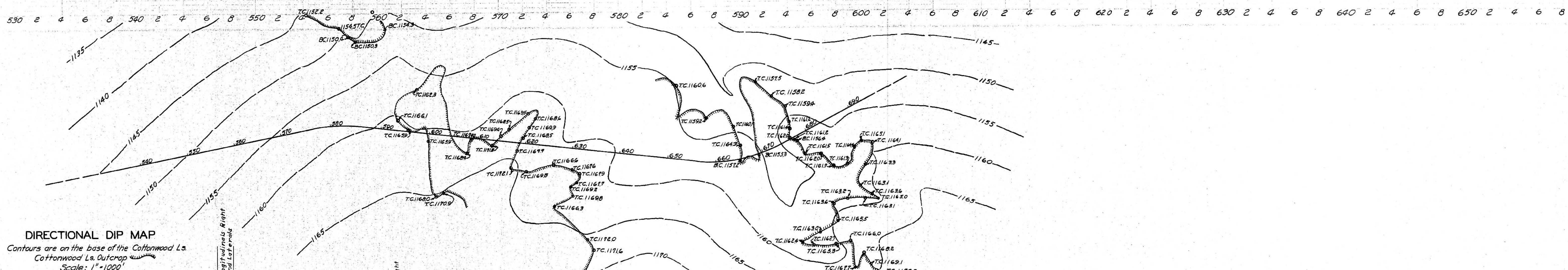
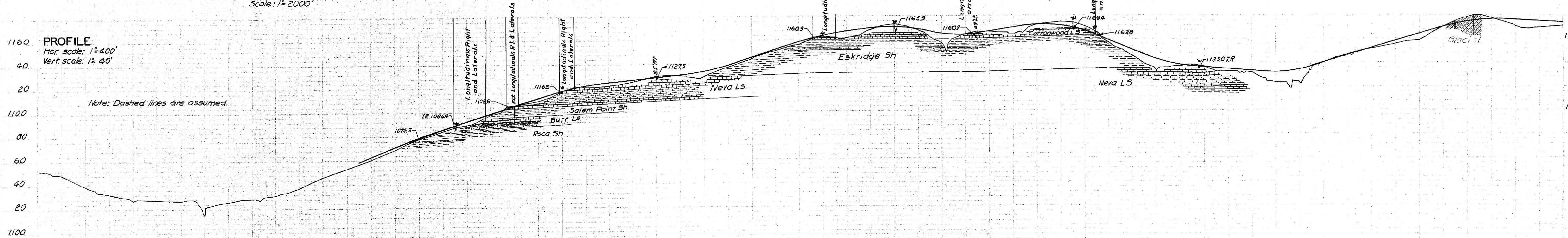
SHOWING

ROCK FORMATIONS
AND
DIRECTIONAL DIP

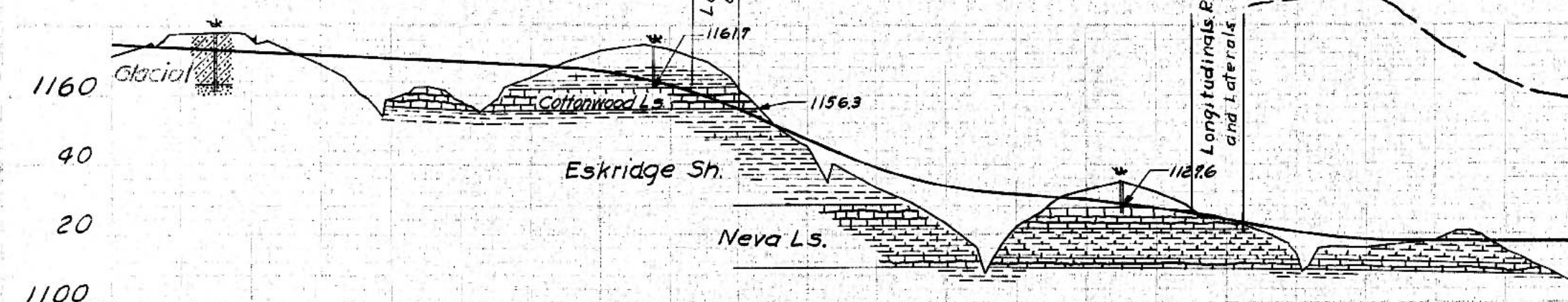
SHEET 1 OF 1



PROFILE
Hor. scale: 1"=400'
Vert. scale: 1"=40'



DIRECTIONAL DIP MAP
Contours are on the base of the Cottonwood Ls.
Cottonwood Ls. Outcrop
Scale: 1"=1000'



1. R. Limestone, buff, fine grained, hard, molluscan fauna.	1.0'	1. R. Limestone, buff, fine grained, hard, molluscan fauna.	2.5'
2. C. Gray to buff calcareous clay (shale). Abundant brachiopods and bryozoans.	6.7'	3. B. Limestone, light gray to buff, thin bedded to massive, abundant bryozoans, some brachiopods, nodular chert, fine grained, hard.	1.5'
3. B. Limestone, light gray to buff, thin bedded to massive, abundant bryozoans, some brachiopods, nodular chert, fine grained, hard.	1.5'	4. R. Buff shaly limestone.	1.0'
4. R. Buff shaly limestone.	1.0'	5. C. Green clay (shale).	1.9'
5. C. Green clay (shale).	1.9'	6. C. Greenish gray clay (shale).	4.3'
6. C. Greenish gray clay (shale).	4.3'	7. R. Shaly limestone, O' limestone at base.	2.4'
7. R. Shaly limestone, O' limestone at base.	2.4'	8. C. Greenish to bluish green clay (shale), buff, hard.	1.8'
8. C. Greenish to bluish green clay (shale), buff, hard.	1.8'	9. C. Green clay (shale).	1.8'
9. C. Green clay (shale).	1.8'	10. A. Limestone, fine grained, gray, unfossiliferous.	0.3'
10. A. Limestone, fine grained, gray, unfossiliferous.	0.3'	11. C. Greenish gray clay (shale).	1.6'
11. C. Greenish gray clay (shale).	1.6'	12. R. Limestone, buff, gray, unfossiliferous.	0.2'
12. R. Limestone, buff, gray, unfossiliferous.	0.2'	13. C. Olive green, fairly hard clay (shale).	1.5'
13. C. Olive green, fairly hard clay (shale).	1.5'	M. C. Red, gray and maroon clay (shale), calcareous, fairly hard.	1.19'
M. C. Red, gray and maroon clay (shale), calcareous, fairly hard.	1.19'	14. R. Limestone, light gray, crystalline.	0.8'
14. R. Limestone, light gray, crystalline.	0.8'	15. Gray clay (shale).	0.4'
15. Gray clay (shale).	0.4'	16. R. Limestone, gray, parts average 0.8 thick.	4.9'
16. R. Limestone, gray, parts average 0.8 thick.	4.9'	17. Gray limy clay (shale).	0.6'
17. Gray limy clay (shale).	0.6'	18. R. Shaly limestone, gray, appearing like massive limestone, weathers to hard rock.	7.5'
18. R. Shaly limestone, gray, appearing like massive limestone, weathers to hard rock.	7.5'	19. Gray clay (shale).	0.3'
19. Gray clay (shale).	0.3'	20. R. Limestone, buff, massive.	3.5'
20. R. Limestone, buff, massive.	3.5'	21. C. Gray clay (shale), calcareous, fairly hard.	0.6'
21. C. Gray clay (shale), calcareous, fairly hard.	0.6'	22. R. Limestone, gray to buff, hard, massive, molluscan fauna.	3.7'
22. R. Limestone, gray to buff, hard, massive, molluscan fauna.	3.7'	23. C. Black clay (shale), weathers out readily.	1.4'
23. C. Black clay (shale), weathers out readily.	1.4'	24. R. Bluish gray shaly limestone, massive.	2.4'
24. R. Bluish gray shaly limestone, massive.	2.4'	25. C. Blue gray to black clay (shale).	5.4'
25. C. Blue gray to black clay (shale).	5.4'	26. R. Limestone, gray to buff, hard, massive, molluscan fauna.	3.7'
26. R. Limestone, gray to buff, hard, massive, molluscan fauna.	3.7'	27. C. Green clay (shale).	1.0'
27. C. Green clay (shale).	1.0'	28. Hard limy clay (shale).	0.7'
28. Hard limy clay (shale).	0.7'	29. C. Gray, green and black clay (shale).	0.6'
29. C. Gray, green and black clay (shale).	0.6'	30. R. Limestone, buff, impure, somewhat shaly.	3.3'
30. R. Limestone, buff, impure, somewhat shaly.	3.3'	31. C. Greenish gray clay (shale).	1.0'
31. C. Greenish gray clay (shale).	1.0'	32. C. Clay (shale).	3.7'
32. C. Clay (shale).	3.7'	33. R. Limestone, Buff, impure.	2.2'
33. R. Limestone, Buff, impure.	2.2'		



GENERALIZED SECTION
Scale: 1/2 5'

E.J. Underwood
L.S. Fisher
8-37
8-38