

STATE HIGHWAY COMMISSION

July, 1954

MEMORANDUM TO: C. Frank Vitt
Engineer of Design

FROM: John D. McNeal, Acting Chief Geologist
By J. A. Barnett and L. G. Hitzeman Geologists
V. L. Darland, Regional Geologist

SUBJECT: Geological Report
From Havensville north to county line.
Project No. 63-75-S1145 (5)

From Havensville, No. & East

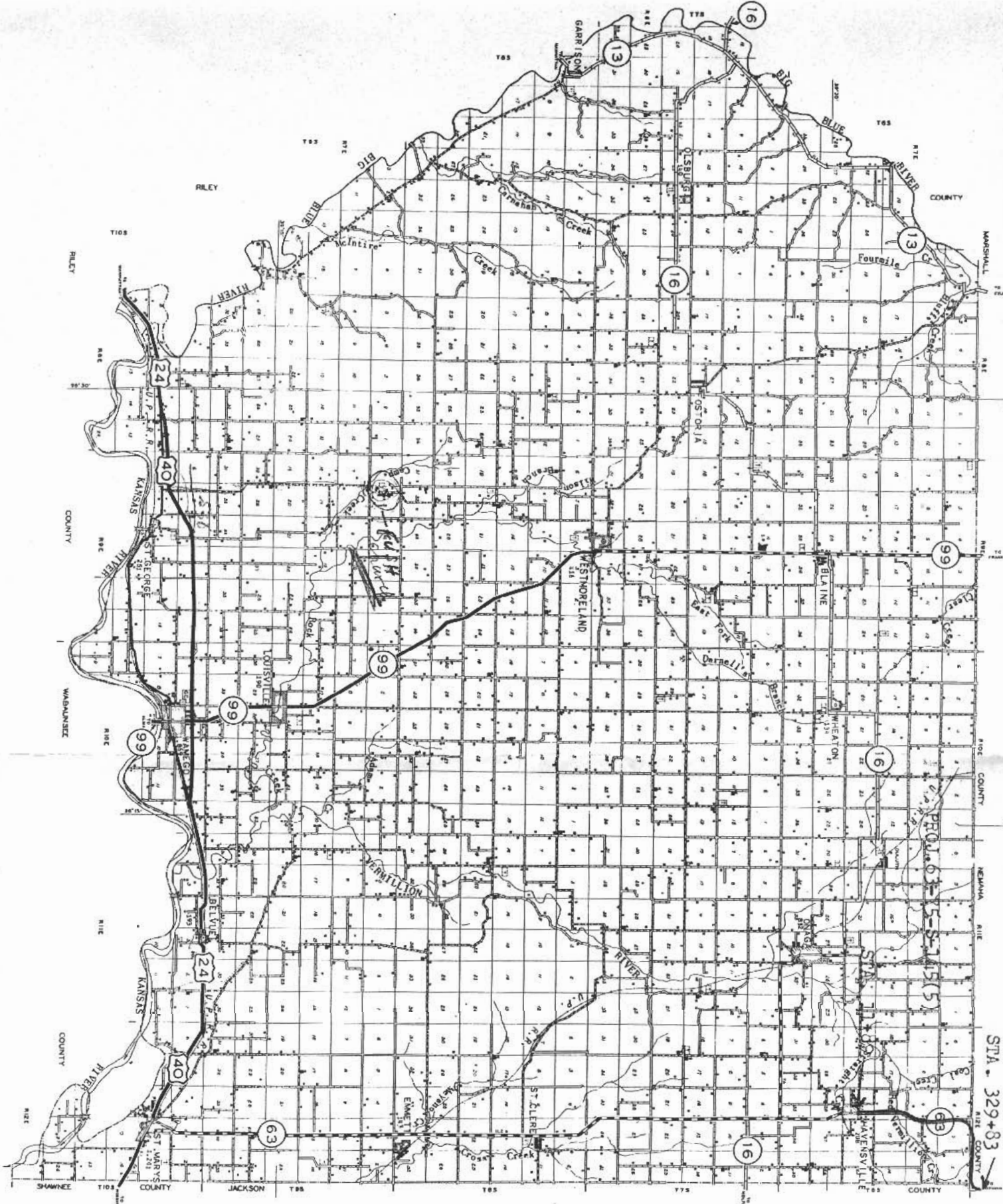
I N T R O D U C T I O N

This report presents geological information obtained by the Kansas State Highway Commission through field study and is submitted for use in the design and construction of the above project with reference to the formations that occur and the engineering problems affected by the geology of the project.

The report is divided into four sections for the purpose of grouping the information and discussions of the different phases. This report is intended to be complete within itself, but is best used in connection with the Geo-Engineering survey.

Resumé of Sections

Section I.	Geological Description and Formational Sequence.
Section II.	Geology of the Project.
Section III.	Geo-Engineering Aspects.
Section IV.	Hydrology.

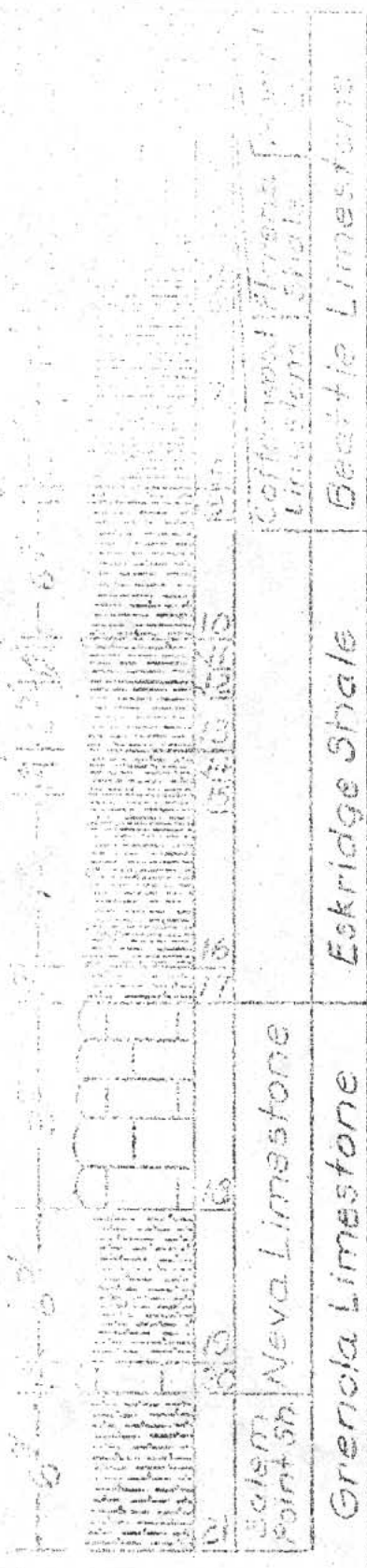


PROJ. 63-15-S-145(5)

STA. 329+83

SECTION I

EVANSTON SYSTEM



Beattie Limestone Formation

Morrill Limestone Member

1. Limestone, grey, weathers buff, shaly, irregular.

Florona Shale Member

2. Shale, grey-green, platy, limy.

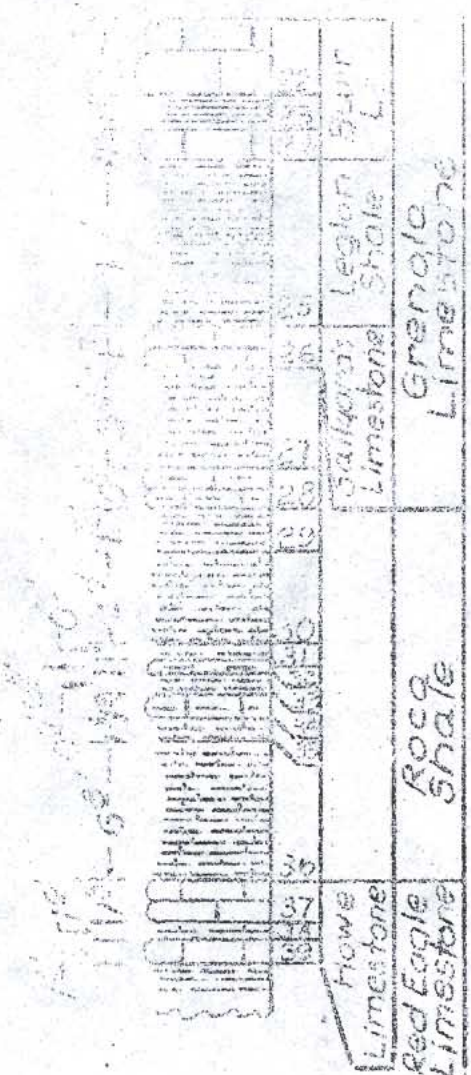
Cottonwood Limestone Member

3. Limestone, grey, weathers buff, dense, blocky, contains a few chert nodules.
4. Limestone, grey, weathers buff, dense, blocky, contains a few chert nodules.

Eskridge Shale Formation

5. Shale, lt.-green, weathers tan-grey, blocky.
6. Shale, lt.-green, weathers dark-green, blocky.
7. Shale, mottled maroon and green, platy.
8. Shale, lt.-green, weathers lt.-grey, very platy.
9. Shale, grey, limy, hard.
10. Shale, green, blocky, limy.
11. Limestone, lithographic, porcellaneous glaze.
12. Shale, green, blocky.
13. Shale, maroon, blocky.
14. Shale, green, blocky, limy.
15. Shale, dark maroon, blocky.
16. Shale, maroon and green banded, contains several thin limy zones.
17. Shale, green, blocky, limy.

Crenola Limestone Formation
 Limestone Member



- 18. Limestone, buff, massive.
- 19. Shale, green, blocky, limy.
- 20. Limestone, buff, blocky algal.

Salem Point Shale Member

- 21. Shale, green, blocky, limy.

Burr Limestone Member

- 22. Limestone, buff, platy, iron stained, upper 0.1 is an ostracod zone.
- 23. Shale, black, fissile.
- 24. Limestone, buff, blocky.

Legion Shale Member

- 25. Shale, green, blocky, contains an impure limestone.

Sallyyards Limestone Member

- 26. Limestone, buff, blocky.

Roca Shale Formation

- 27. Shale, green, blocky, limy.
- 28. Limestone, shaly, tan-grey, blocky.
- 29. Shale, grey to green, platy to blocky.
- 30. Shale, light bluish-green, limy.
- 31. Shale, green with maroon mottling, platy.
- 32. Shaly, Limestone, buff, lensing.
- 33. Shale, maroon and green, blocky.
- 34. Limestone, buff, blocky.
- 35. Limy shale, buff to light green.
- 36. Shale, green, platy and blocky, limy.

Pennsylvanian System



Brownsville Limestone Formation

1. Limestone, lt.-brown, blocky.
2. Shale, blue-grey, weathers tan.
3. Limestone, grey, weathers lt.-brown, platy.

Pony Creek Shale Formation

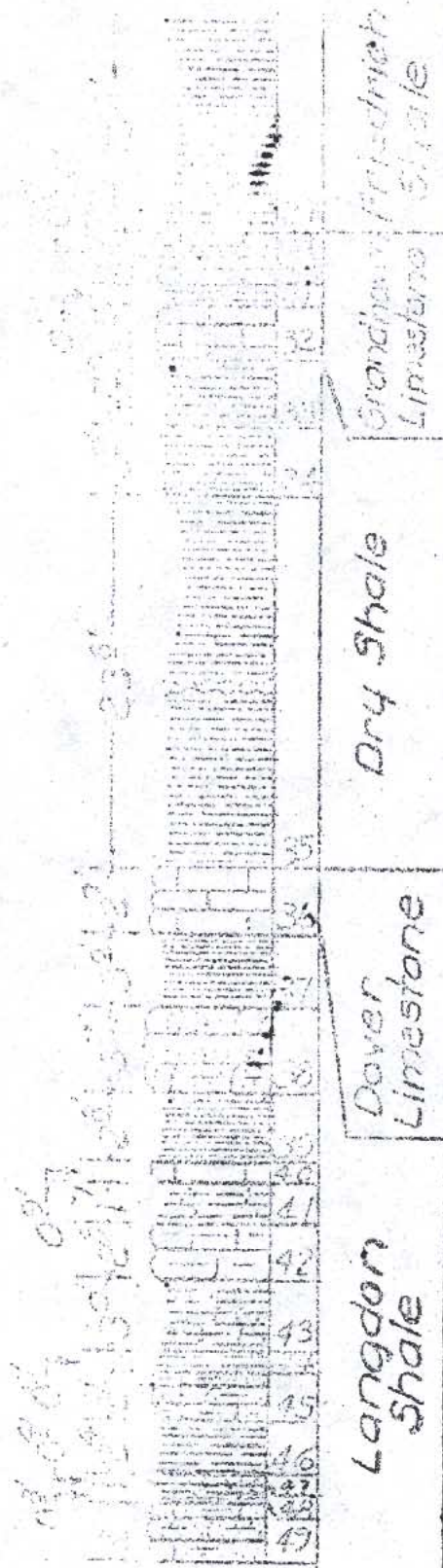
4. Shale, grey-green, blocky.
5. Shaly Limestones, brown, nodular.
6. Shale, maroon mottled with green, sandy.
7. Sandstone, lenses.
8. Shale, blue-green, platy.
9. Limestone, brown, upper portion impure. (Grayhorse Limestone (?))
10. Shale, maroon and green, blocky.
11. Limestone, lt.-grey, slightly sandy.
12. Shale, green, platy, sandy.

Caneyville Limestone Formation
Nebraska City Member

13. Limestone, lt.-brown, platy.

French Creek Shale Formation.

14. Shale, green, platy, contains thin sandstone stringers.
15. Lignite, black, irregular.
16. Shale, grey-green, contains very thin sandstone stringers, platy.
17. Lignite, black.
18. Shale, grey-green, platy, contains thin sandstone stringers.
19. Sandstone, grey, variable.



20. Shale, grey, very sandy.

31st Creek Limestone Formation.

21. Limestone, grey, blocky, lower 0.4 somewhat impure.

Prichard Shale Formation

22. Shale, green, blocky, slightly sandy.

23. Sandstone, lt.-brown, lenticular.

24. Sandstone, lt.-grey, shaly.

25. Sandstone, lt.-brown, micaceous.

26. Sandstone, lt. grey-green, very shaly, contains lensing pure sandstones.

27. Shale, green and maroon, sandy.

Grandhaven Limestone Formation

28. Limestone, lt.-grey, blocky.

29. Shale, lt.-grey, platy.

30. Limestone, lt.-grey, blocky.

31. Shale, lt-green, platy.

32. Limestone, lt.-grey, nodular.

Dry Shale Formation

33. Shale, green, blocky.

34. Shale, maroon, blocky.

35. Shale, green, blocky.

Dover Limestone Formation

36. Limestone, grey, weathers buff, blocky.

Langdon Shale Formation



- 37. Shale, blocky, fissile, lignitic.
- 38. Sandstone, Argillaceous.
- 39. Shale, platy, blocky & lignitic.
- 40. Limestone, argillaceous in lower part.
- 41. Shale, green, blocky, calcareous.
- 42. Limestone, partings in center, slightly argillaceous.
- 43. Shale, blue-grey, blocky.
- 44. Shale, light-grey brown, slightly arenaceous, micaceous.
- 45. Sandstone, light-greyish-brown, argillaceous, micaceous.
- 46. Alternating bands of grey shale & sandstone with a few very thin zones of lignitic.
- 47. Sandstone, brown impure.
- 48. Alternating bands of grey shale & sandstone, with a few very thin zones of lignitic.
- 49. Sandstone, light greyish brown, with laminations of grey shale, very micaceous.
- 50. Shale, blue-grey, blocky, very sandy & micaceous, ferruginous, lower two feet is a blue-black platy shale, argillaceous.

Maple Hill Limestone Formation.

- 51. Limestone, grey, weathers brownish-grey.
- 52. Shale, blue-grey, platy.
- 53. Limestone, blue-grey, weathers brown, nodular.
- 54. Shale, blue weathering to brown, platy, clayey.
- 55. Limestone, blue-grey, blocky.

56. Shale, bluish-grey, to green, platy.
57. Limestone, grey, weathers buff, blocky, argillaceous, contains three horizontal partings.
58. Shale, blue-grey weathers buff, platy.
59. Limestone, blue-grey, weathers buff.
60. Shale, blue-grey, weathers buff, platy.
61. Limestone, dense, blocky, four horizontal partings, grey weathers tan.