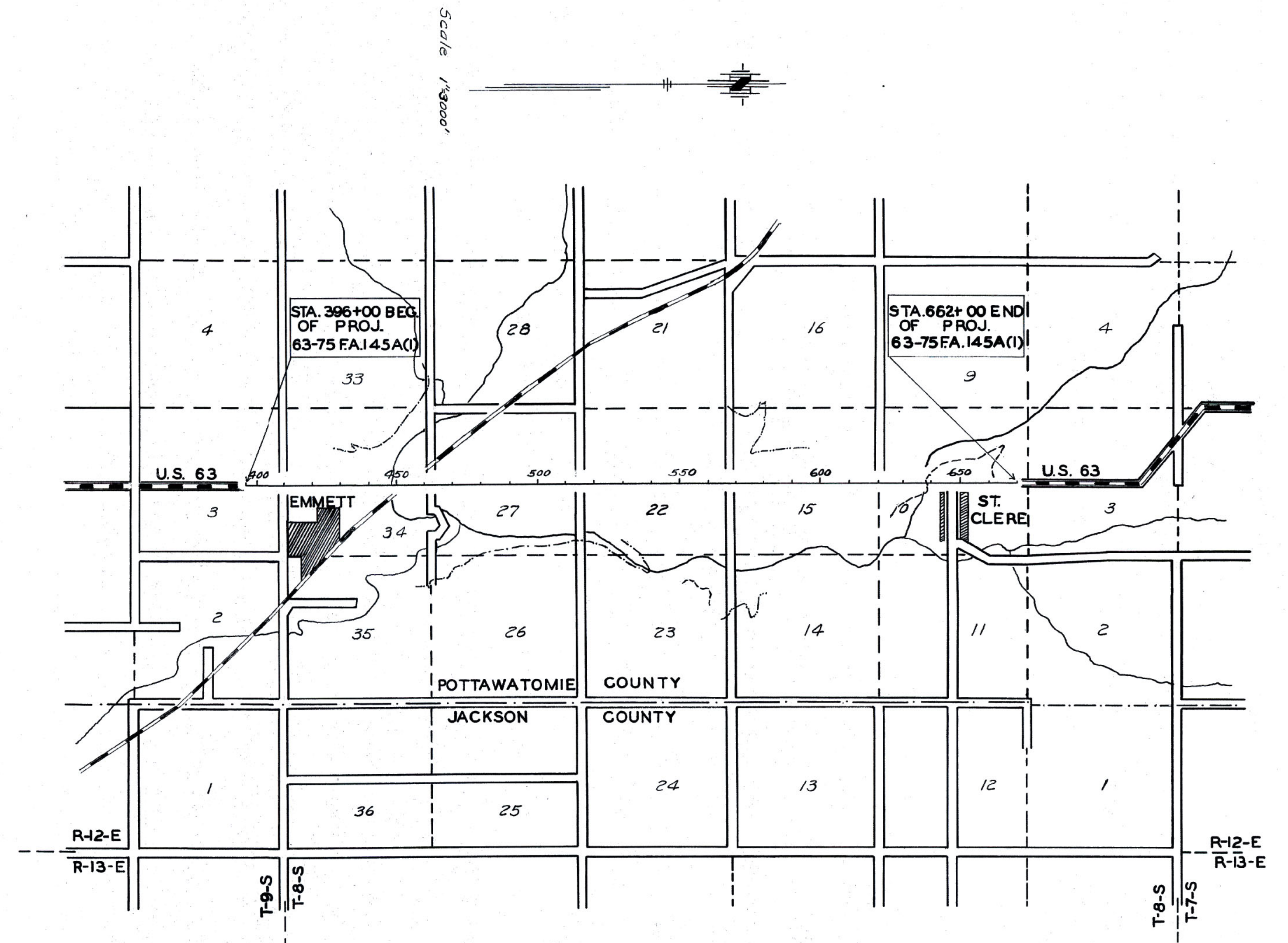


SYMBOL	MEMBER	DESCRIPTION	THICKNESS			
1	BURR LIMESTONE	1. R. Gray to light gray, fresh fractures, gray to black dense Ls. horz. & ver. joints, solution chan. Fossiliferous.	2.0'	8.4'		
2		2. R. Buff platy shaly Limestone *	0.5'			
3		3. R. Buff clay shale *	5.0'			
4		4. R. Gray, blocky, fine grained, few fossils.	1.0'			
5	ROCA SHALE	5. R. Hard calcareous shale *	2.4'	29.7'		
6		6. R. Green shale *	3.6'			
7		7. R. Honeycomb impure Ls.	0.5'			
8		8. R. Green & maroon banded shale. *	12.2'			
9		9. R. Gray to buff, hard Ls.	0.4'			
10		10. R. Green shale *	8.6'			
11		HOWE LS	11. R. Buff impure Ls. solution chan. irregular bedding		1.3'	1.3'
12		BENNETT SHALE	12. R. Buff shale *		0.2'	8.5'
13			13. R. Light buff, hard calcareous sh. concoidal fracture fossiliferous. *		2.5'	
14			14. R. Dark gray to black shale *		6.2'	
15	GLENROCK LS	15. R. Gray to light gray buff, blocky, massive Ls. semi-nodular top, minor ver. fracture system chert	1.0'	1.0'		
16	JOHNSON SHALE	16. R. Dark gray to black shale *	5.2'	5.2'		
17	LONG CREEK SHALE	17. R. Black fissile shale	0.5'	1.7'		
18		18. R. Dark gray to buff, hard, fine grained Ls.	1.2'			
19	HUGHES CREEK SHALE	19. R. Dark gray sh. mud seams, hard, irregular bedded, weathers concoidal. *	3.8'-4.2'	17.3'		
20		20. R. Gray to light buff, massive, medium grained ver. joints, fossiliferous. Ledge not persistent	2.0'			
21		21. R. Gray, dark gray to black shale *	11.1'			
22	AMERICUS LIMESTONE	22. R. Gray (blk. pts) massive, blocky Ls. Gt. fossils, weathers easily.	0.8'	4.0'		
23		23. R. Drab & green, hard, shale *	0.5'			
24	HAMLIN SHALE	24. R. Light gray & buff hard limy shale *	2.7'			
25		25. R. Green shale *				

* Common where weathered - See cross sections.

GEOLOGICAL COLUMNAR SECTION

Scale 1"=10'



LOCATION MAP

Outcrops shown thus:
 Americus Ls. ————
 Burr Ls. ————
 Lower Burr Ls. ————
 Glenrock Ls. ————

General Note: The geological information shown on these plans are from notes taken in the field and represent the best information available to the Kansas Highway Commission.

GEOLOGIC MAP
 POTTAWATOMIE COUNTY
 PROJ. 63-75-FA.145A(1)
 SHOWING
 ROCK FORMATIONS
 AND
 DIRECTIONAL DIP