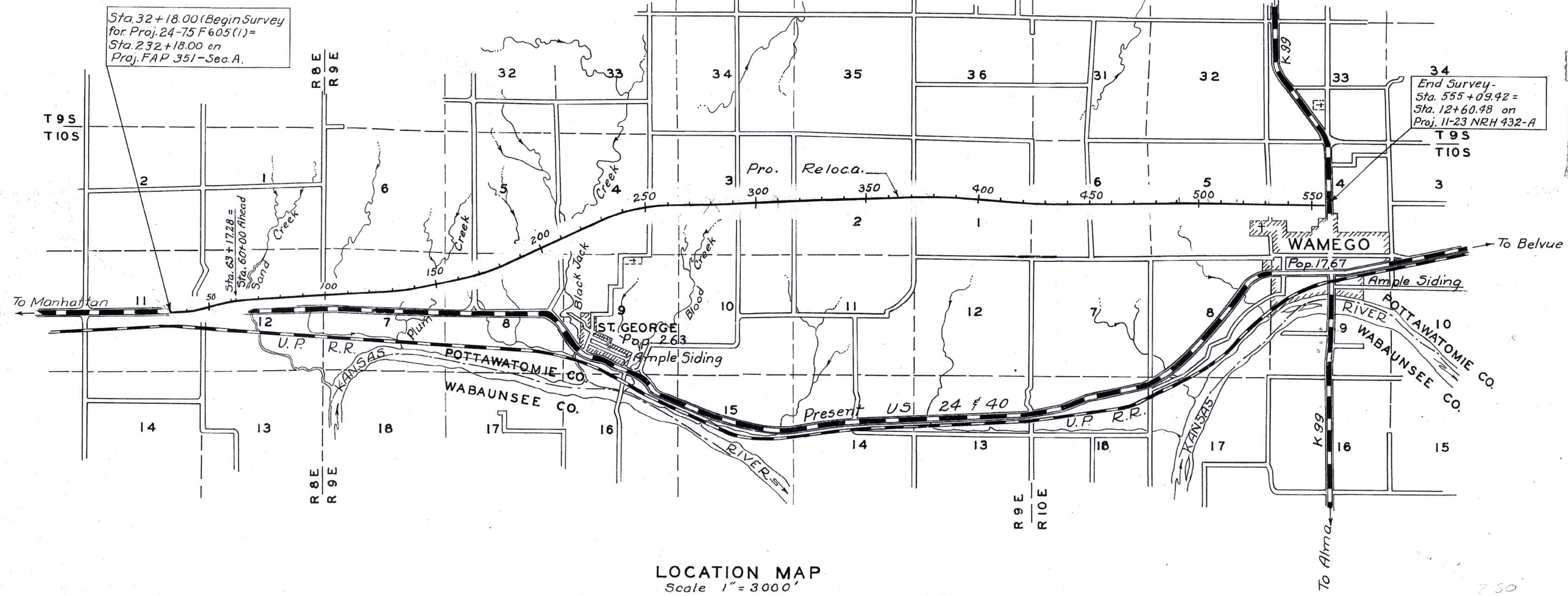


SYMBOL	MEMBER	DESCRIPTION	THICKNESS
1	SOIL MANTLE	1 C Clay and silt with coarse to fine glacial sand and gravel.	0'-150'
2	WEST BRANCH SHALE	2 R Green limy shale. *	1'
3	FALLS CITY LIMESTONE	3 R Light brown coquinooid limestone. Soft brecciated texture, weathers in large massive blocks.	3'±
4		4 R Clay shale with secondary calcareous deposition. *	3'±
5		5 R Fairly hard limestone.	1.5'±
6	HAWXBY SHALE	6 R Buff, limy shale. *	1.7'±
7		7 R Dark gray to gray green clay shale. Upper 0.2 is black fissile shale. *	17'±
8	HAWXBY SHALE	8 R Gray to dark gray shaly limestone and limy shale. *	6-7'
9		9 R Dark gray shale. *	2'±
10		10 R Gray, hard limestone in upper part underlain with gray limy shale with clay shale at its base and dark gray shaly limestone.	4.5'-5'
11		11 R Gray clay shale with thin limy zone near top and thin lenticular limestone locally present. *	6'-7'
12	ASPINWALL LIMESTONE	12 R Gray to light gray, very hard limestone with gray clay shale partings.	5'-6'
13	INDIAN CAVE SANDSTONE	13 R Iron stained, fine to medium grained, micaceous sandstone. Tightly cemented to soft and shaly. Cross-bedded. *	0'-50'
14	TOWLE LIMESTONE	14 R Gray, clay shale. *	5'±
15		15 R Limy shale with lenticular shaly limestone. *	8'-9'
16	BROWNVILLE LIMESTONE	16 R Brown, close jointed, fossiliferous limestone.	3'-50'
17	PONY CREEK SHALE	17 R Light gray clay shale. Lower 0.6' is a dark limy shale. *	2'-2.5'
18	CANEYVILLE LIMESTONE	18 R Limestone and clay shale which grades eastward to limy shale and is undifferentiated from Pony Creek Shale. *	2'-3'
19	FRENCH CREEK SHALE	19 R Gray, clayey to calcareous shale 0.5' black fissile shale at top. *	10'-14'
20	JIM CREEK LIMESTONE		



SYMBOL	MEMBER	DESCRIPTION	THICKNESS
19			
20	JIM CREEK LIMESTONE	20 R Shaly limestone and limy shale. Limestone thins to the east and is locally represented by limy shale in which case it becomes undifferentiated with Dry-Friedrich and French Creek Shales. *	3.5'-9'
21	DRY-FRIEDRICH SHALE	21 R Gray limy shale with clay shale at top and bottom. 1' limestone locally present near top. *	
22	DOVER LIMESTONE	22 R Gray, monolithic limestone. Weathers brown in large blocks One or two thin shale partings. Fossiliferous.	2.8'-3.8'
23		23 R Dark blue-green shale. Hard and limy to soft and clayey. *	1.5'-4'
24		24 R Hard limestone, shaly in lower part. Weathers in shaly chips. Fossiliferous.	2'-3'
25	LANGDON SHALE	25 R Sandy shale in upper part and silty in lower part. Calcareous and pyritic concretions of pebble to boulder size near center of formation. *	8'-10'
19			19'-20'

LOCATION MAP
Scale 1" = 3000'

SYMBOL	MEMBER	DESCRIPTION	THICKNESS
25	LANGDON SHALE		
26	MAPLE HILL LIMESTONE	26 R Blue-gray fine grained limestone. Brittle, hard, closely jointed and blocky. Weathers brown with concave surface on vertical joints. Fossiliferous.	1.7'-2'
27	WAMEGO SHALE	27 R Dark, iron stained, clay shale with sandy zone that is locally a poorly cemented, cross bedded sandstone. *	
28	TARKIO LIMESTONE	28 R Gray monolithic limestone. Hard. Wide spaced joints. Shaly at top and bottom. Weathers reddish brown.	19'-20'
29	WILLARD SHALE	29 R Dark gray to tan, sandy shale with thin sandstones. Gray-green in lower part. *	6.5'±
		* Common when weathered. See cross-sections.	33'-34'

GEOLOGICAL COLUMNAR SECTION
Scale 1" = 5'

3				
2				
1				
NO.	DATE	REVISIONS	BY	APP'D

STATE HIGHWAY COMMISSION OF KANSAS
GEOLOGICAL PLAN AND PROFILE
POTTAWATOMIE COUNTY
PROJ. 24 - 75 F 605 (1)
SHEET NO. 1 OF 10 SCALE 1" = 3000'
DESIGNED BY DATE 9-49 DETAILED BY A. Chidwood TRACED BY
CHECKED BY APPROVED BY DATE