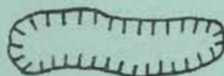


APPENDIX II

The following site data forms are designated as "open site; sampled." The sites described herein are depicted on the county materials maps as a "■".

LEGEND



This symbol on the site data form represents an open site.

MATERIAL SURVEY REPORT

Site No. LS-64 Pf Date June, 1965
 Material Limestone County Marshall
 Location N $\frac{1}{2}$ SW $\frac{1}{4}$ Sec. 22 Twp. 3S Range 7E
 Owner Louis Wassenberg Marysville, Kansas
 Nature of Deposit Dry Accessibility Good
 Status of Site Open site; sampled

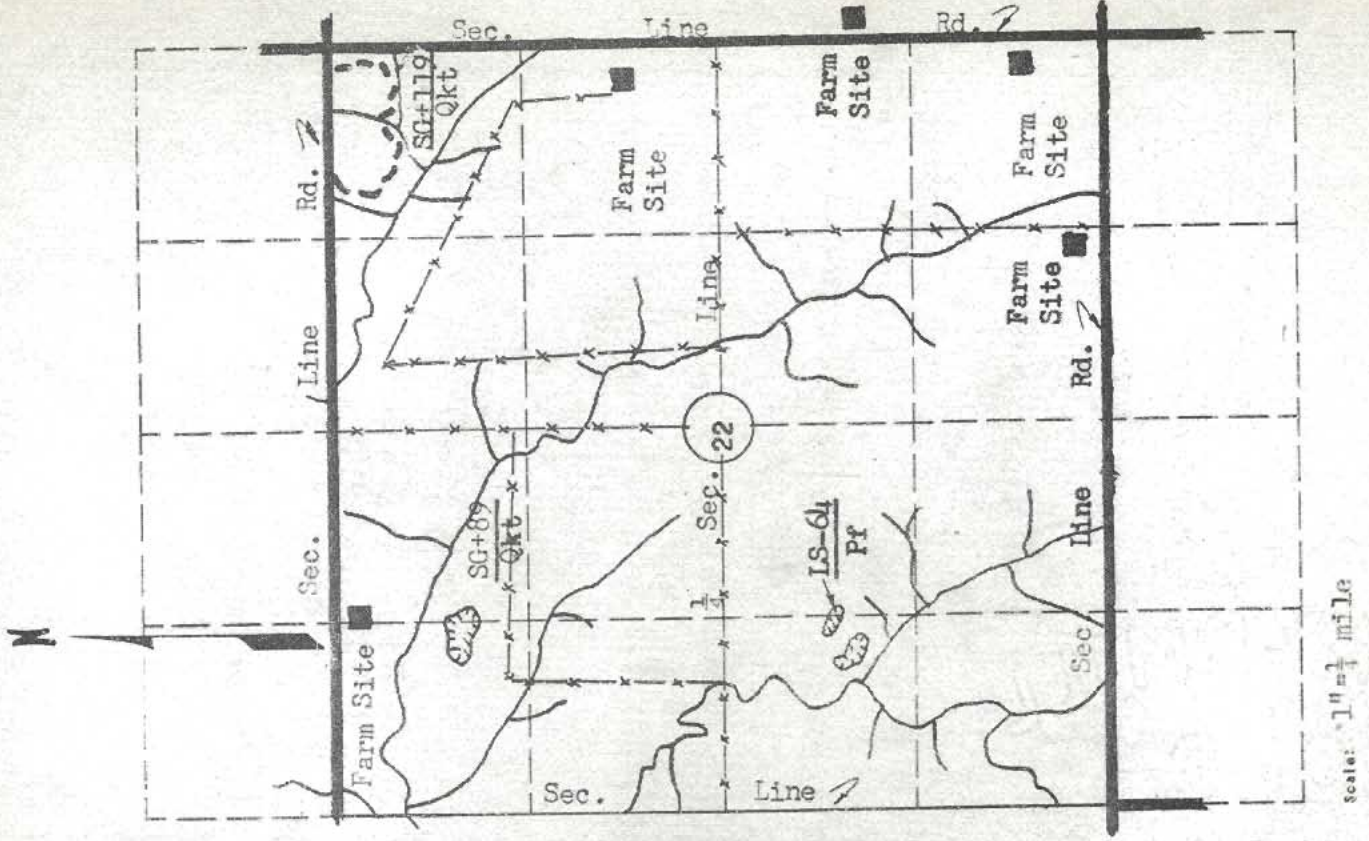
EXPLORATION DATA

Test Hole	Material at Bottom of Hole	Depth of over-burden	Depth of Material	Percent Retained						Wash 200	G.F.	L.L.	P.I.
				1 1/2	3/4	3/8	1/8	16	30				

CORRELATION DATA

Geological Age Permian
 Geological Source Florence Limestone Member
 Material Similar To Material reported on SHC form 619, Marshall County
 # 2 Lab. No. 15091
 Specific Gravity (Sat.) 2.34 (Dry) 2.22
 Los Angeles Wear (B) 35.4
 Absorption 5.80 Soundness 0.94
 Wt. Cu.Ft. Str. Ratio

Remarks It has been reported that the material in this pit away from the original exposure is badly weathered and unfit for construction use.



STATE HIGHWAY COMMISSION OF KANSAS

MATERIAL SURVEY REPORT

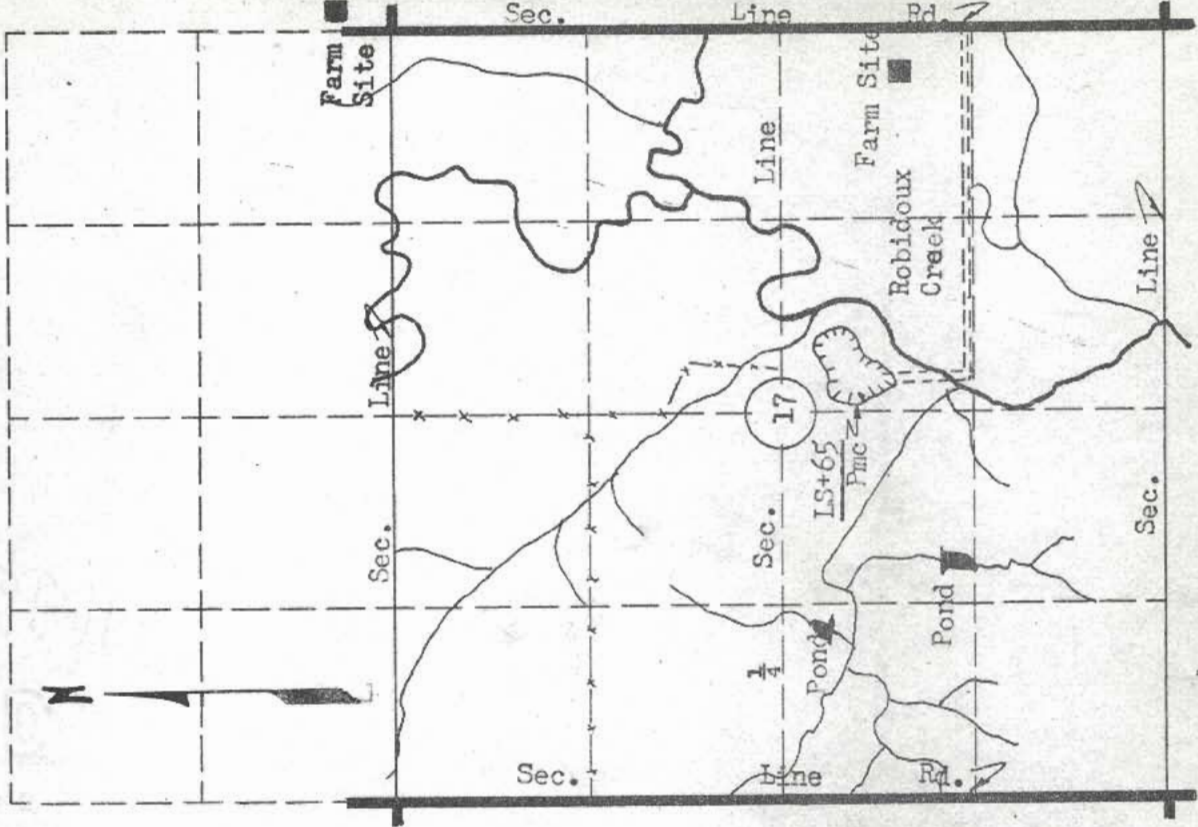
Site No. LS+65 Date June 1965
Pmc
 Material Limestone County Marshall
 Location NW 1/4 SE 1/4 Sec. 17 Twp. 2S Range 9E
 Owner Rubie Wuester address Home City, Kansas
 Nature of Deposit Dry Accessibility Good
 Status of Site Open site; sampled

EXPLORATION DATA

Test Hole	Material at Bottom of Hole	Depth of over-Burden	Depth of Material	Percent Retained								Wash 200	G.F.	L.L.	P.I.		
				1/2	3/4	1	3/8	4	5	16	30					50	100

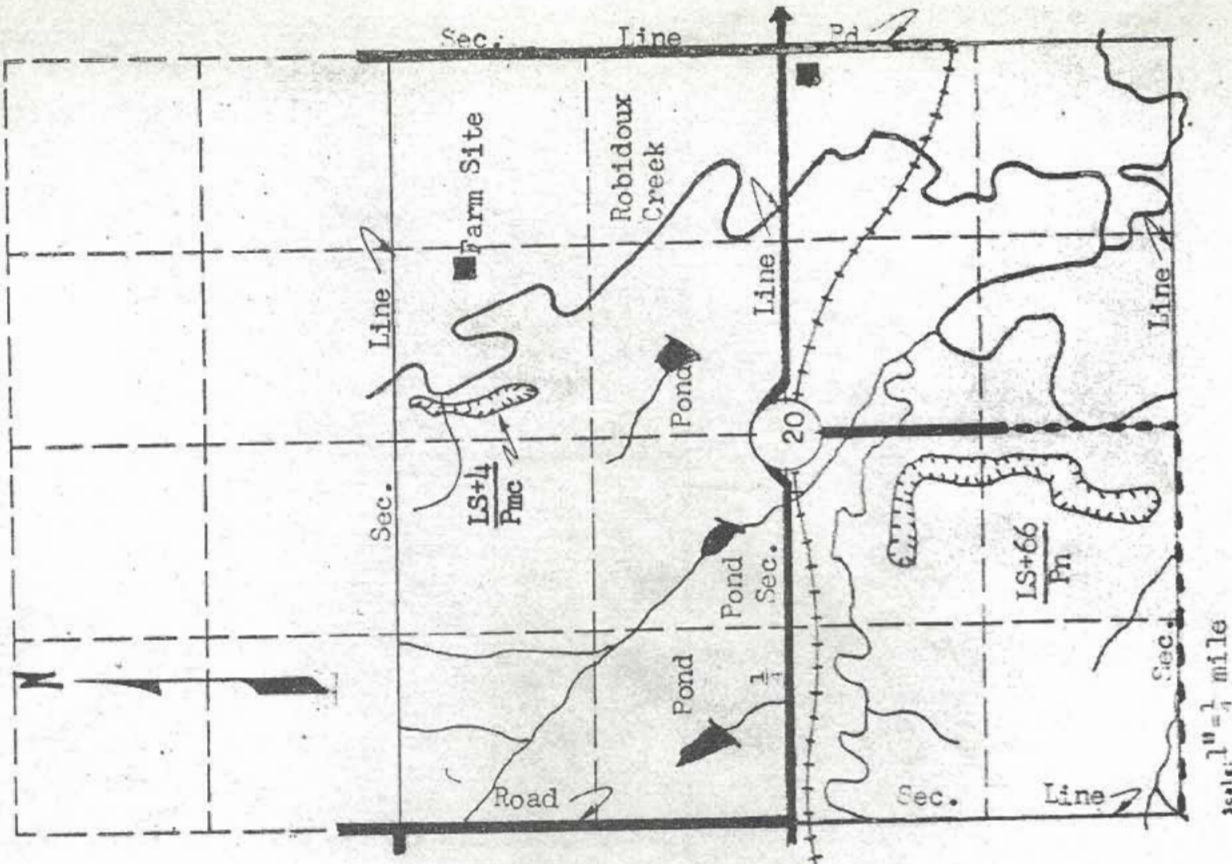
CORRELATION DATA

Geological Age Permian
 Geological Source Morrill and Cottonwood Limestone Member
 Material Similar To Material reported on SHC form 619, # 58-55 and Lab. No. 21387, 21388, 28378
 Specific Gravity (sat.) 2.40, 2.42, 2.15 (dry) 2.26, 2.28, 2.32
 Los Angeles Wear 40.4, (B) 34.9
 Absorption 6.29, 5.96, 5.77 Soundness 0.75, -----, 0.82
 Mt. Cu.Ft. ----- Str. Ratio -----
 Remarks -----



MATERIAL SURVEY REPORT

Site No. IS+66
Pn
 Material Limestone
 Location E1 SW1/4 Sec. 20 Twp. 2S Range 9E
 Owner Edwin J. Fitzgerald Beattie, Kansas
 Nature of Deposit Dry Accessibility Good
 Status of Site Open site; sampled



EXPLORATION DATA

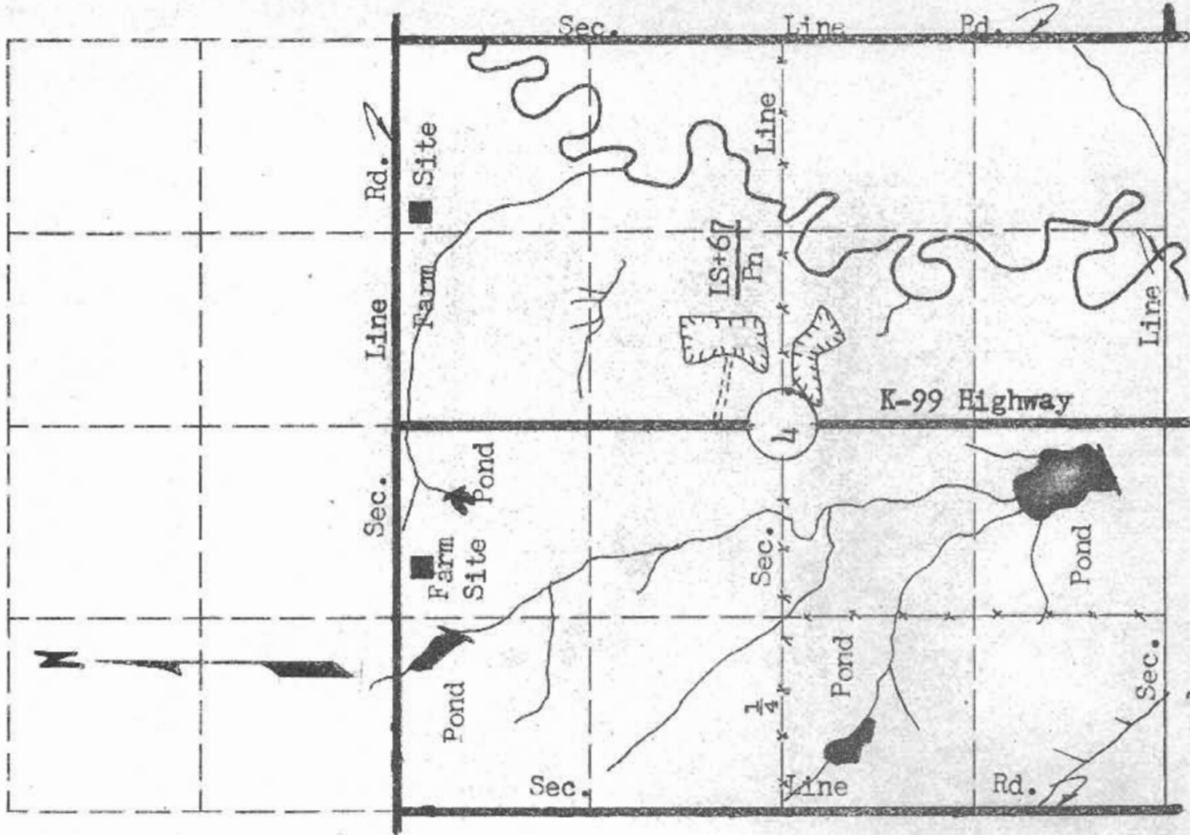
Test Hole	Material at Bottom of Hole	Depth of over-Burden	Depth of Material	Percent Retained					Wash #200	G.F.	L.L.	P.I.
				1 1/2	3/4	3/8	4	8				

CORRELATION DATA

Geological Age Permian
 Geological Source Neva Limestone Member
 Material Similar To Material reported on SHC form 619, # 58-9 and
 Lab. No. 14775
 Specific Gravity (sat.) 2.41 (dry) 2.25
 Los Angeles Near (B) 42.9
 Absorption 7.18 Soundness 0.96
 Wt. Co. Ft. _____ Str. Ratio _____
 Remarks _____

MATERIAL SURVEY REPORT

Site No. LS+67 Date June, 1965
Pn
 Material Limestone County Marshall
 Location E $\frac{1}{2}$ Sec. 4 Twp. 3S Range 9E
 Owner See Below name address
 Nature of Deposit Dry Accessibility Good
 Status of Site Open site; sampled



Scale: 1" = $\frac{1}{4}$ mile

EXPLORATION DATA

Test Hole	Material at Bottom of Hole	Depth of overburden	Depth of Material	Percent Retained						Wash 200	G.F.	L.L.	P.I.
				1/2	3/4	1	3/8	1/2	3/4				

CORRELATION DATA

Geological Age Permian
 Geological Source Neva Limestone Member
 Material Similar To Material reported on SHC form 619, # 58-41 and
 Lab No. 15093
 Specific Gravity (Sat.) 2.32 (dry) 2.15
 Los Angeles Near (B) 44.6
 Absorption 7.60 Soundness 0.85
 Wt. Cu.ft. _____ Str. Ratio _____
 Remarks NE $\frac{1}{4}$ Mable Larkin and Venita Kirlin 516 Westview Dr. Manhattan, Kansas
SE $\frac{1}{4}$ Henry F. Dwerlkotte Beattie, Ks.

MATERIAL SURVEY REPORT

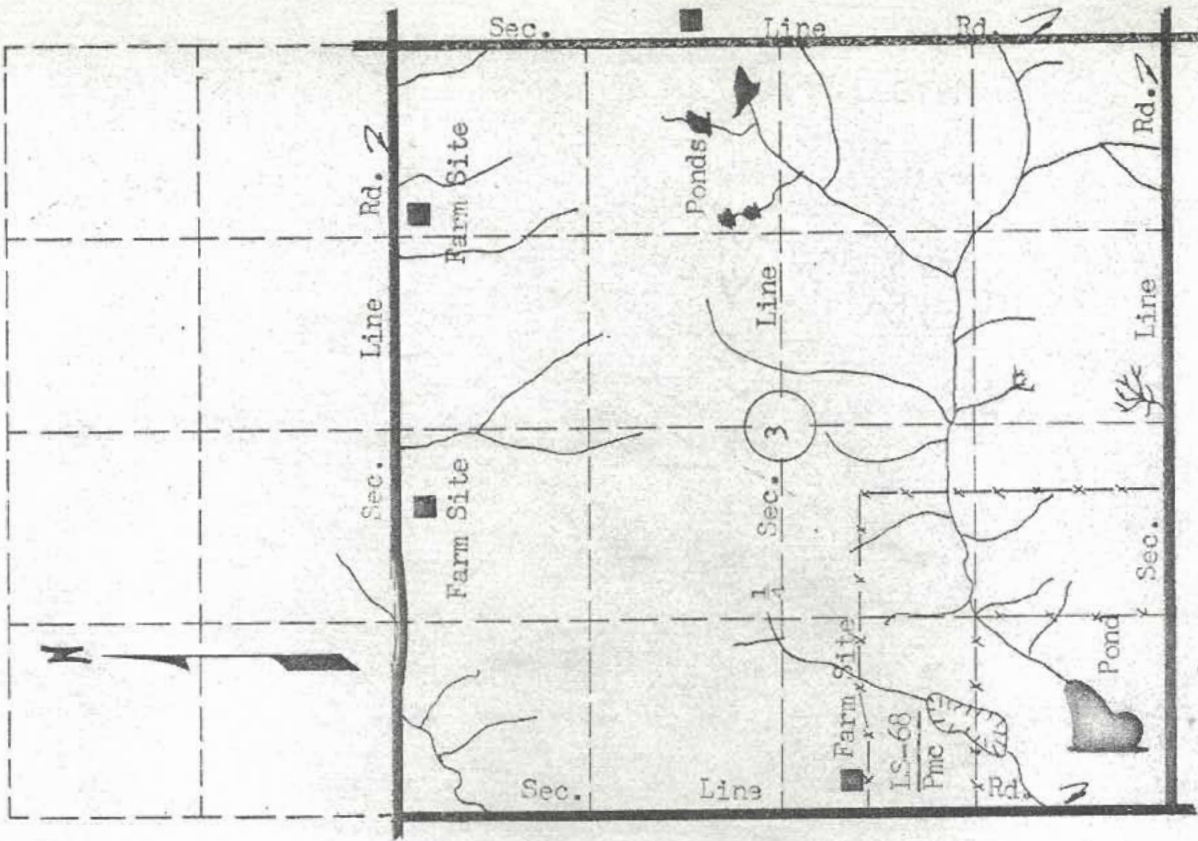
Site No. LS-68 Date June, 1965
Pmc County Marshall
 Material Limestone
 Location W1 SW1 Sec. 3 Twp. 3S Range 9E
 Owner Henry F. and Regina B. Dwerlkotte Beattie, Kansas
 name address
 Nature of Deposit Dry Accessibility Good
 Status of Site Open site; sampled

EXPLORATION DATA

Test Hole	Material at Bottom of Hole	Depth of over-Burden	Depth of Material	Percent Retained					Wash 200	G.F.	L.L.	P.I.
				1 1/2	3/4	3/8	4	8				

CORRELATION DATA

Geological Age Permian
 Geological Source Cottonwood Limestone Member
 Material Similar To Material reported on SIC form 619, # 58-43
 Specific Gravity (Sat.) 2.47 (Dry)
(B) 36.5
 Los Angeles Wear 5.51 Soundness 0.90
 Absorption _____
 Wt. Cu.Ft. _____ Str. Ratio _____
 Remarks _____



Scale: 1" = 1/4 mile

MATERIAL SURVEY REPORT

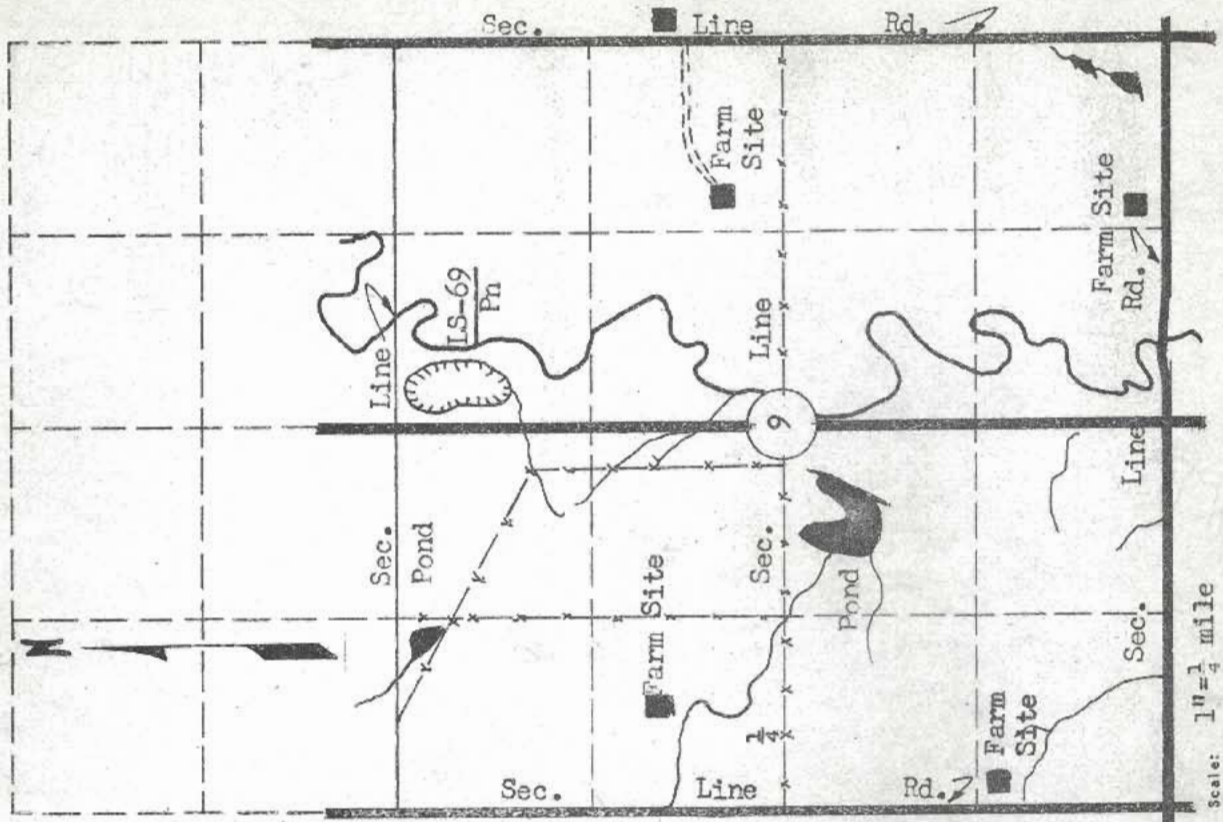
Site No. LS-69 Date June, 1965
Pn
 Material Limestone County Marshall
 Location NW¹ NE¹ Sec. 9 Twp. 3S Range 9E
 Owner Arther Samuelson Frankfort, Kansas
 name address
 Nature of Deposit Dry Accessibility Good
 Status of Site Open site; sampled

EXPLORATION DATA

Test Hole	Material at bottom of Hole	Depth of over-Burden	Depth of Material	Percent Retained					Mash 200	G.S.	L.L.	P.I.
				1 1/2	3/4	3/8	3/16	3/32				

CORRELATION DATA

Geological Age Permian
 Geological Source Neva Limestone Member
 Material Similar to Material reported on SHC form 619, # 58-42 and
Lab. No. 1938, 1310
 Specific Gravity (Set.) 2.52, 252 (Dry) 2.43, 242
 Los Angeles Wear (B) 28.4, (B) 29.2
 Absorption 3.82, 4.17 Soundness 0.89, 0.81
 Mt. Cu.Ft. _____ Str. Ratio _____
 Remarks This site has no expansion possibilities.



MATERIAL SURVEY REPORT

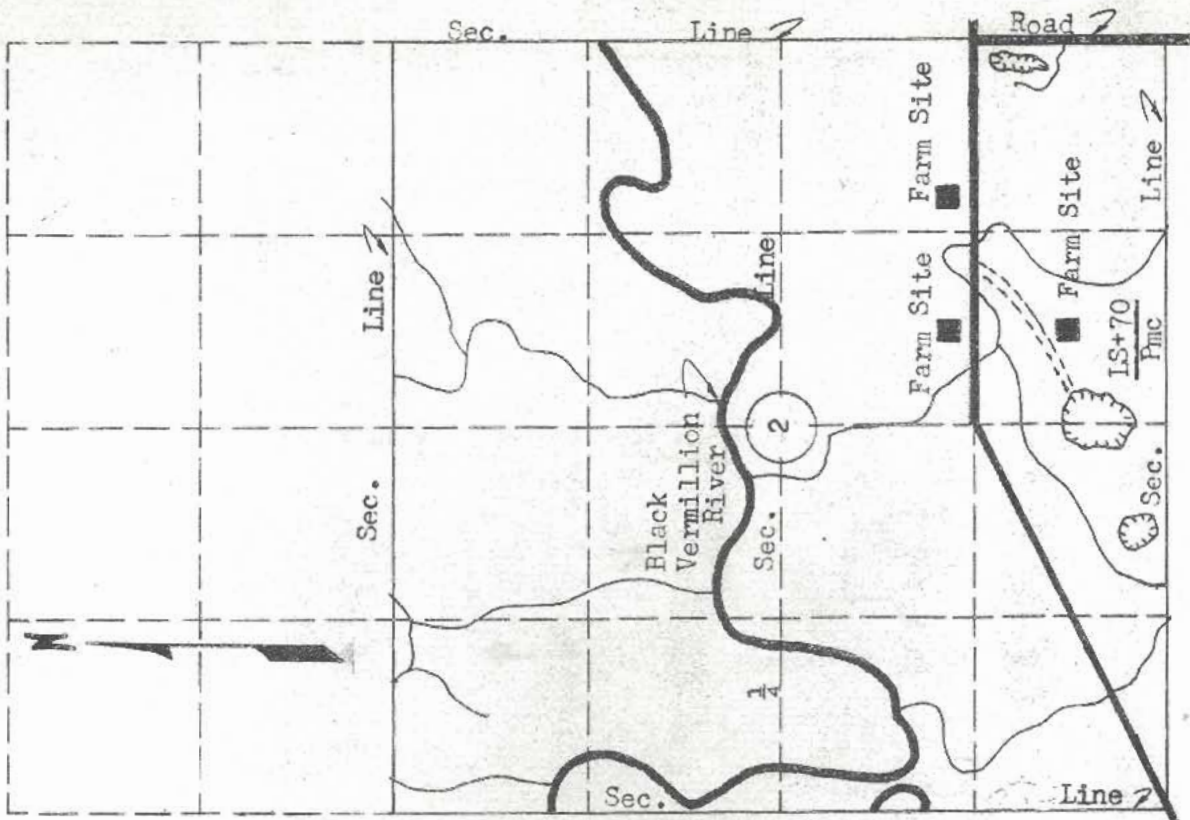
Site No. LS+70
Pmc
 Date June, 1965
 Material Limestone County Marshall
 Location S¹/₂ Sec. 2 Twp. 5S Range 8E
 Owner Edward Pape Frankfort, Kansas
 name address
 Nature of Deposit Dry Accessibility Good
 Status of Site Open site; sampled

EXPLORATION DATA

Test Hole	Material at bottom of hole	Depth of over-burden	Depth of Material	Percent Retained					Wash 200	G.F.	L.L.	P.I.
				1 1/2	3/4	3/8	4	8				

CORRELATION DATA

Geological Age Permian
 Geological Source Cottonwood Limestone Member
 Material Similar To Material reported on SHC form 619, # 58-58 and Lab. No. 26933 -A-B-C, 26932
 Specific gravity (sat.) 2.41, 2.39, 2.42, 2.41 (dry) 2.26, 2.22, 2.27, 2.26
 Los Angeles Wear 6.67, 7.58, 6.56, 6.73 Soundness 38.0
 Absorption 0.83
 Wt. Cu.Ft. _____ Str. Ratio _____
 Remarks _____



Scale: 1" = 1/4 mile

MATERIAL SURVEY REPORT

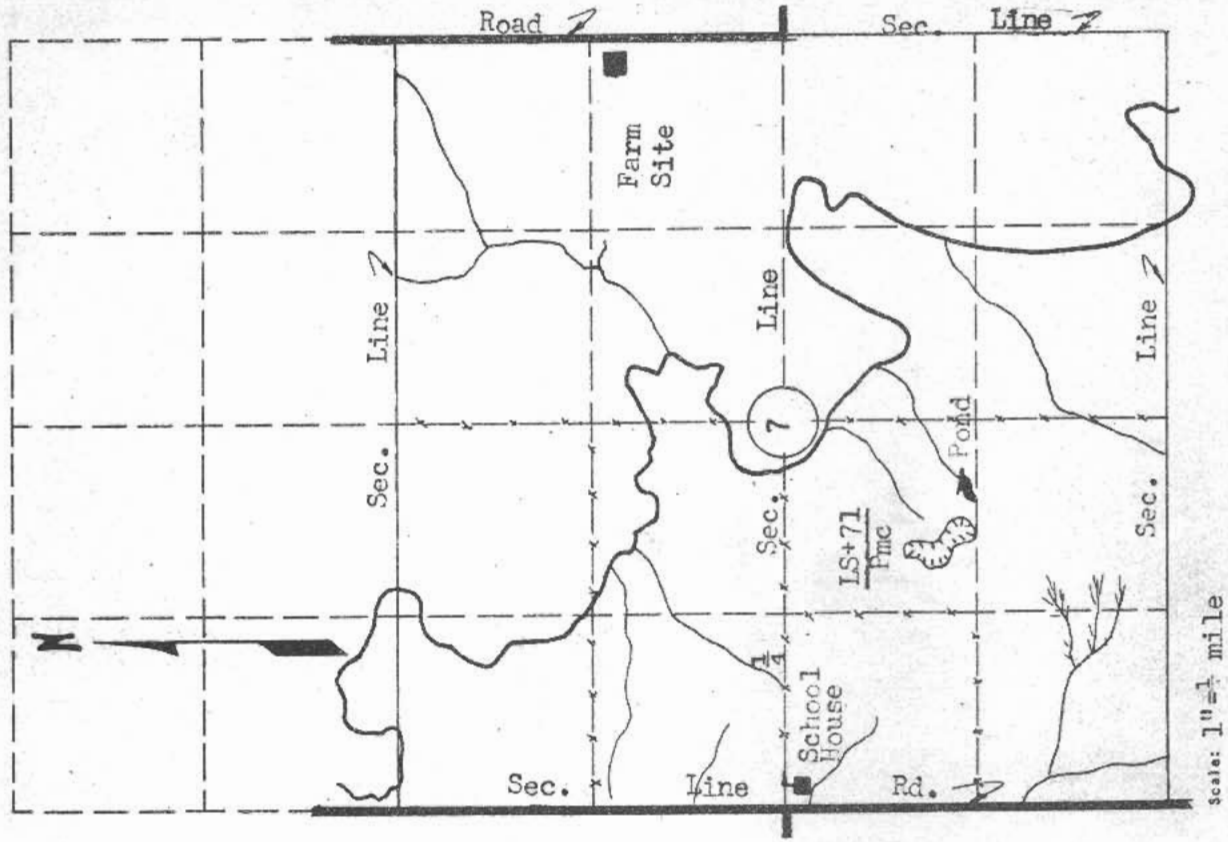
Site No. LS+71
Pmc
 Material Limestone
 Location NE 1/4 SW 1/4 Sec. 7 Twp. 5S Range 9E
 County Marshall
 Owner Albert W. Miller name Frankfort, Kansas address
 Nature of Deposit Dry Accessibility Good
 Status of Site Open site; sampled

EXPLORATION DATA

Test Hole	Material at Bottom of Hole	Depth of overburden	Depth of Material	Percent Retained					Wash 200	G.F.	L.L.	P.I.
				1 1/2	3/4	3/8	1/4	3/16				

CORRELATION DATA

Geological Age Permian
 Geological Source Cottonwood Limestone Member
 Material Similar to Material reported on SHC form 6/15, and Lab. No. 30745
 Specific Gravity (Sat.) 2.39 (Dry) 2.26
 Los Angeles Near (B) 43.5
 Absorption 9.38 Soundness 0.91
 Wt. Cu.Ft. _____ Str. Ratio _____
 Remarks _____



MATERIAL SURVEY REPORT

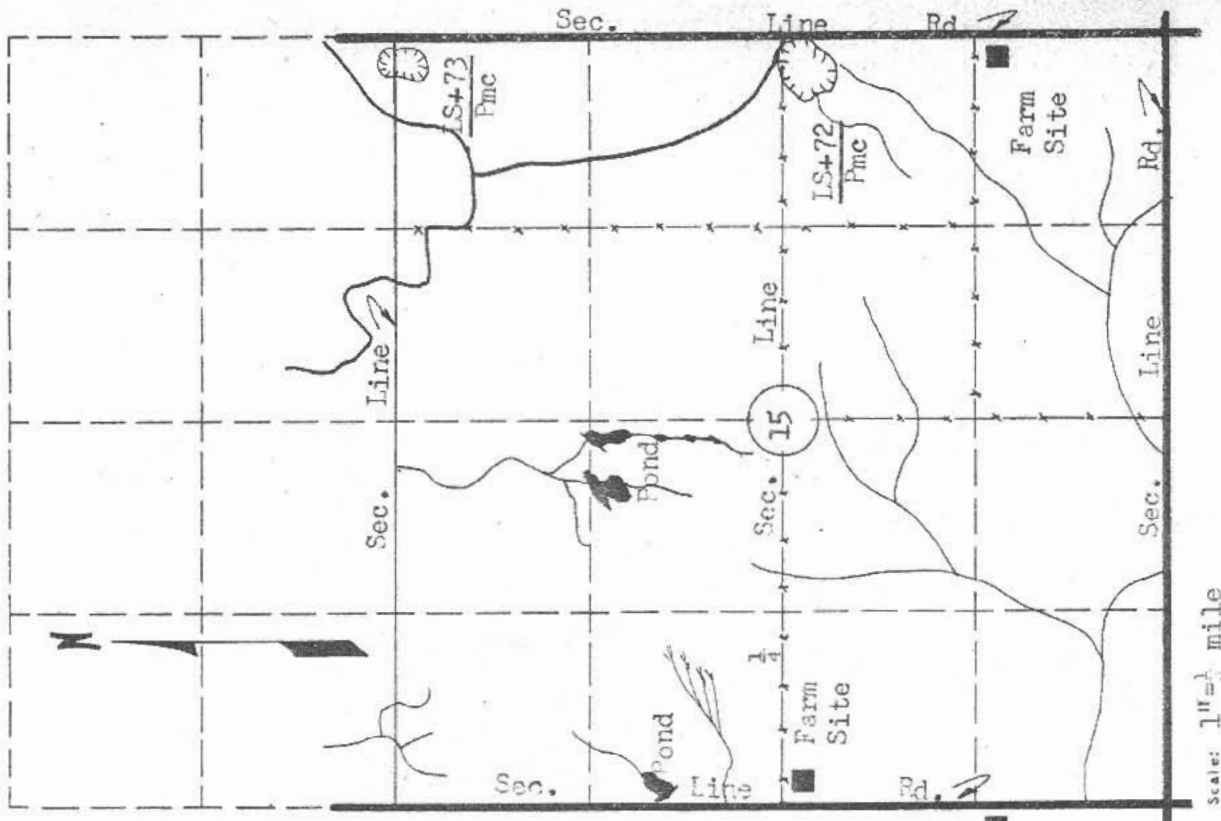
Site No. LS+72
Pmc
 Date June, 1965
 Material Limestone County Marshall
 Location NE 1/4 SE 1/4 Sec. 15 Twp. 5S Range 9E
 Owner Leonard Wassenberg c/o August Wassenberg Seneca, Kansas
 name address
 Nature of Deposit Dry Accessibility Good
 Status of Site Open site; sampled

EXPLORATION DATA

Test Hole	Material at Bottom of Hole	Depth of overburden	Depth of Material	Percent Retained							Mash 200	G.F.	L.L.	P.I.			
				1/2	3/4	3/8	1/2	3/4	5/8	3/4							

CORRELATION DATA

Geological Age Permian
 Geological Source Cottonwood Limestone Member
 Material Similar to Material reported on SMC form 645 and Lab. No. 13608
 Specific Gravity (sat.) 2.36 (dry) 2.22
 Los Angeles Near (B) 34.3
 Absorption 6.48 Soundness 0.24
 Wt. Co. Ft. _____ Str. Ratio _____
 Remarks _____



MATERIAL SURVEY REPORT

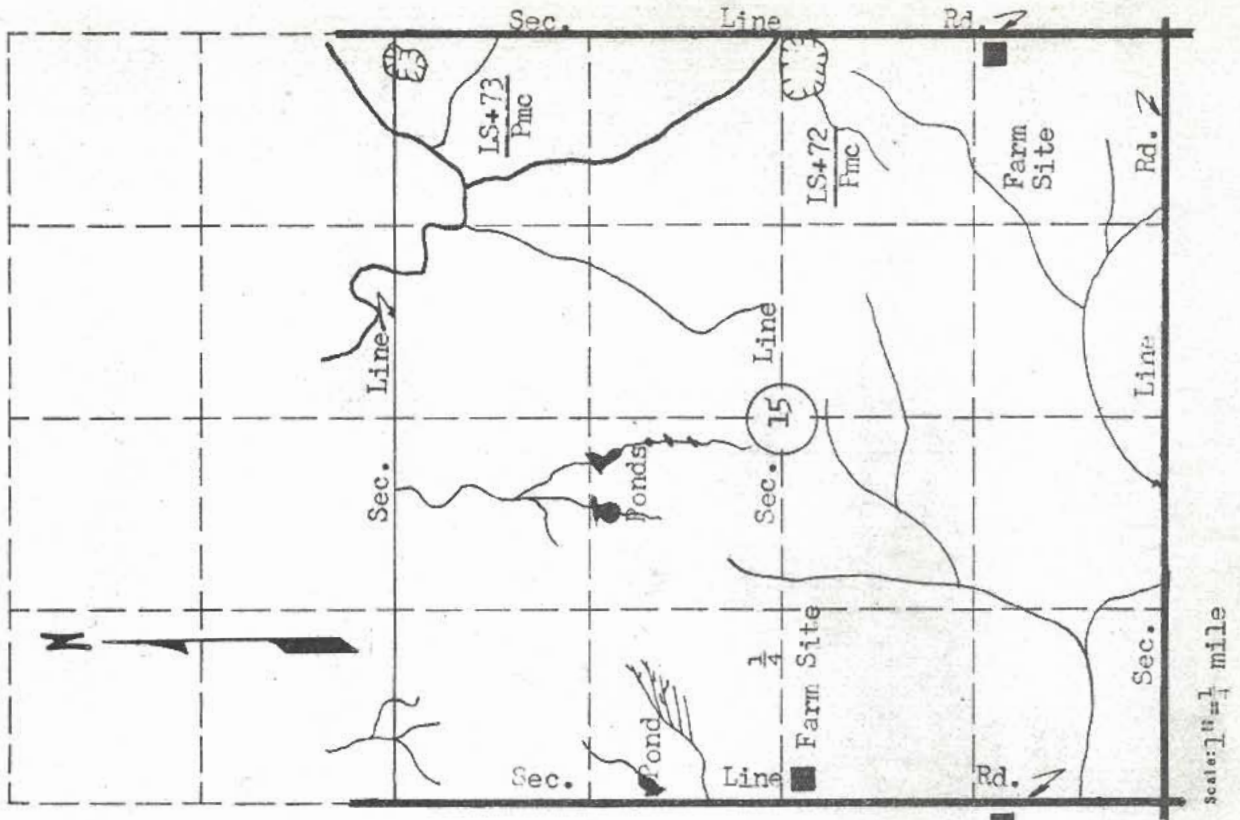
Site No. LS+73
Pmc
 Material Limestone
 Location NE 1/4 NE 1/4 Sec. 15 Twp. 5S Range 9E
 Owner Mande J. Perll Frankfort, Kansas
 Nature of Deposit Dry Accessibility Good
 Status of Site Open site; sampled

EXPLORATION DATA

Test Note	Material at Bottom of Hole	Depth of Overburden	Depth of Material	Percent Retained								Wash 200	G.F.	L.L.	P.I.	
				1/2	3/4	3/8	4	8	16	30	50					100

CORRELATION DATA

Geological Age Permian
 Geological Source Cottonwood Limestone Member
 Material Similar to Material reported on SHC form 619, Marshall County # 1 and Lab Nos. 49286, 49287, and 90868
 Specific Gravity (Sat.) 2.40, 2.40, 2.42 (Dry)
 Los Angeles Near (A) 34.9, (A) 34.8 (B) 33.6
 Absorption 4.98, 4.81, 3.56 Soundness 0.86, 0.83, 0.84
 Wt. Cu. Ft. _____ Str. Ratio _____
 Remarks _____



MATERIAL SURVEY REPORT

Site No. LS+74
Fmc

Date June, 1965

Material Limestone County Marshall

Location SW 1/4 SE 1/4 Sec. 23 Twp. 4S Range 8E

Owner Edwina E. Hatter 703 2nd West St. McCook, Nebraska
name address

Nature of Deposit Dry Accessibility Good

Status of Site Open site; sampled

EXPLORATION DATA

Test Hole	Material at bottom of hole	Depth of overburden	Depth of Material	Percent Retained							Wash 200	G.F.	L.I.	P.I.			
				1 1/2	3/4	3/8	4	8	16	30					50	100	

CORRELATION DATA

Geological Age Permian

Geological Source Morrill and Cottonwood Limestone Member

Material Similar To Material reported on SHC form 645 and Lab Nos. 15698, 21613, and 15697

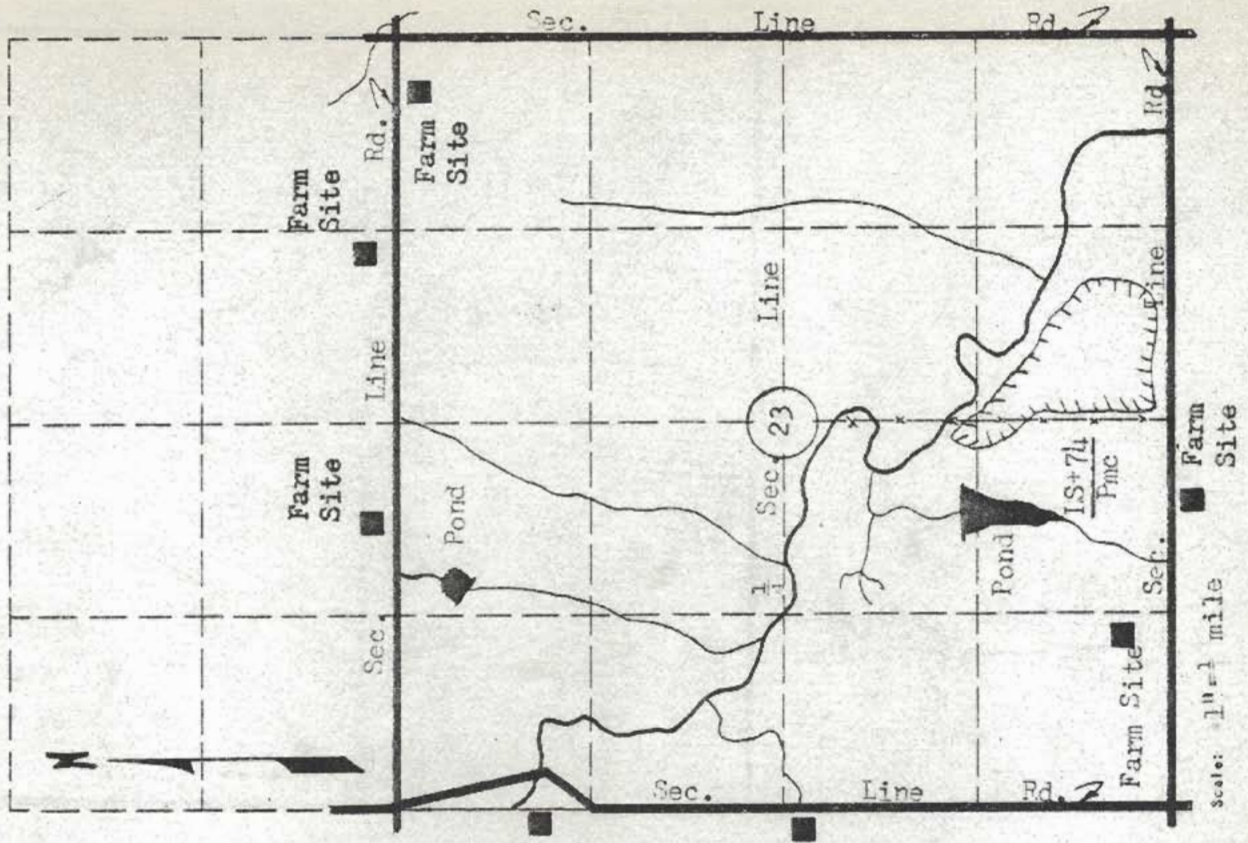
Specific Gravity (sat.) 2.38, 2.36, 2.38 (dry) 2.24, 2.21, 2.22

Los Angeles Wear (B) 43.1, (B) 41.5, (B) 41.6

Absorption 6.16, 6.93, 6.90 Soundness 0.86, 0.88, 0.78

Wt. Cu.ft. _____ Str. Ratio _____

Remarks _____



MATERIAL SURVEY REPORT

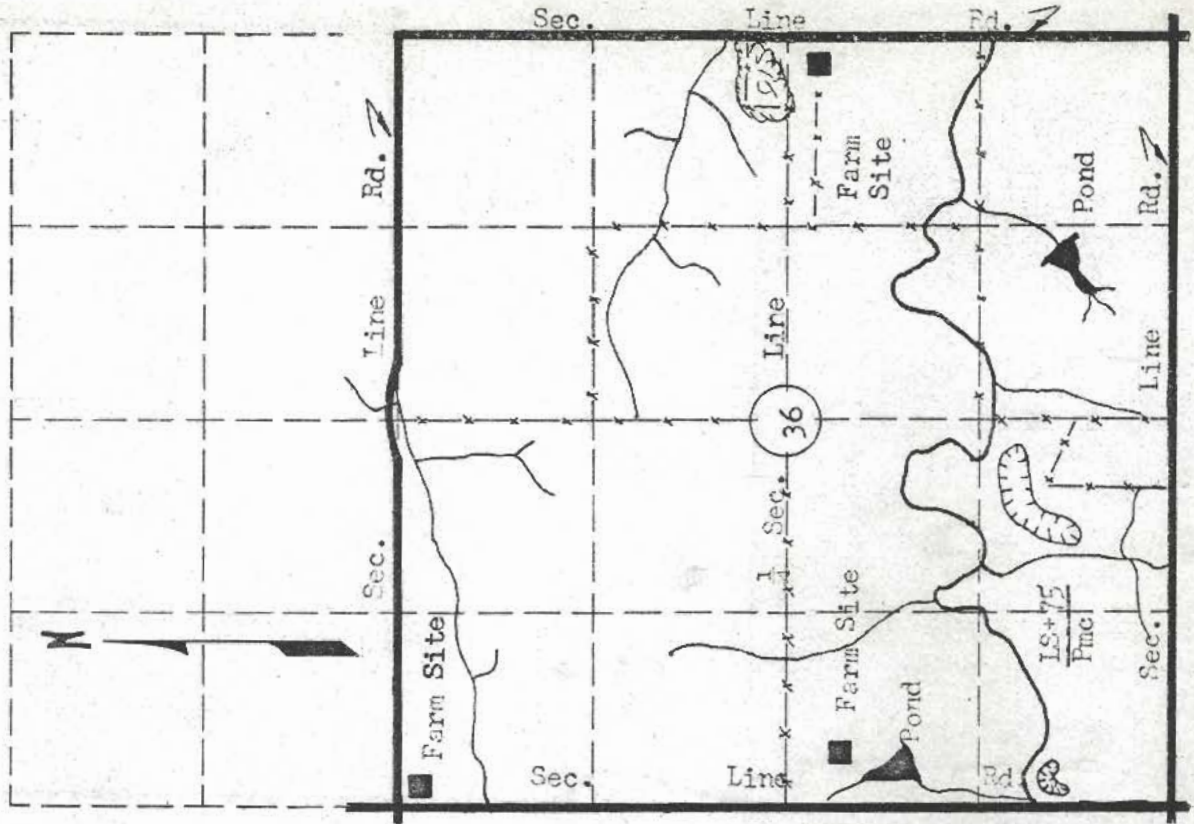
Site No. IS+75 Date June, 1965
Pmc
 Material Limestone County Marshall
 Location SW $\frac{1}{4}$ Sec. 36 Twp. 3S Range 8E
 Owner William H. and H. C. Jones Frankfort, Kansas
name address
 Nature of Deposit Dry Accessibility Fair
 Status of Site Open site; sampled

EXPLORATION DATA

Test Hole	Material at Bottom of Hole	Depth of over-Burden	Depth of Material	Percent Retained					Wash 200	G.F.	L.L.	P.I.
				1/2	3/4	3/8	4	8				

CORRELATION DATA

Geological Age Permian
 Geological source Cottonwood Limestone Member
 Material Similar To Material reported on SHC form 645 and Lab. No. 30221
 Specific Gravity (Sat.) 2.39 (dry) 2.25
 Los Angeles Wear (B) 13.5
 Absorption 6.26 Soundness 0.24
 Wt. Cu.Ft. _____ Str. Ratio _____
 Remarks _____



MATERIAL SURVEY REPORT

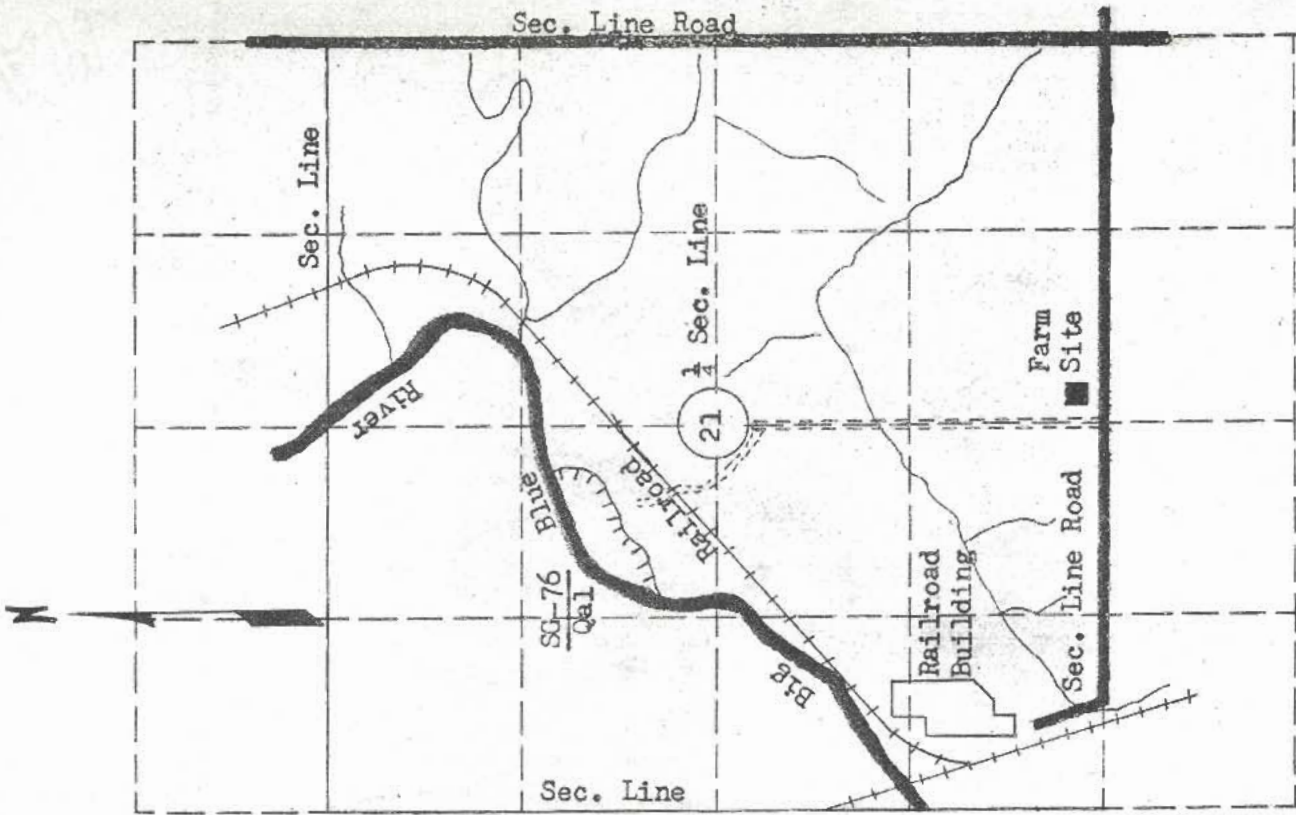
Site No. SG-76 Date July, 1965
Qal County Marshall
 Material Sand and Gravel
 Location SE 1/4, NW 1/4 Sec. 21 Twp. 2S Range 7E
 Owner Embyr L. and Avis R. Williams address Frankfort, Kansas
 Nature of Deposit Wet Accessibility Good
 Status of Site Open site; sampled

EXPLORATION DATA

Test Hole	Material at Bottom of Hole	Depth of Material	Percent Retained							G.F.	L.L.	P.I.			
			1/2	3/4	3/8	1/4	1/8	16	30				50	100	200
			5	11	22	41	67	86	96	99	1	4.03			

CORRELATION DATA

Geological Age Quaternary
 Geological Source Alluvium
 Material similar to material reported on SHC form 619 # 58-53 and Lab. No. 20205
 Specific Gravity (sat.) 2.58 (Dry)
 Los Angeles Wear 37.4
 Absorption 0.60 Soundness 0.97
 Wt. Co-ft. 114.73 Str. Ratio 1 day - 1.57, 3 day - 1.43
 Remarks _____



Scale: 1" = 1/4 mile

MATERIAL SURVEY REPORT

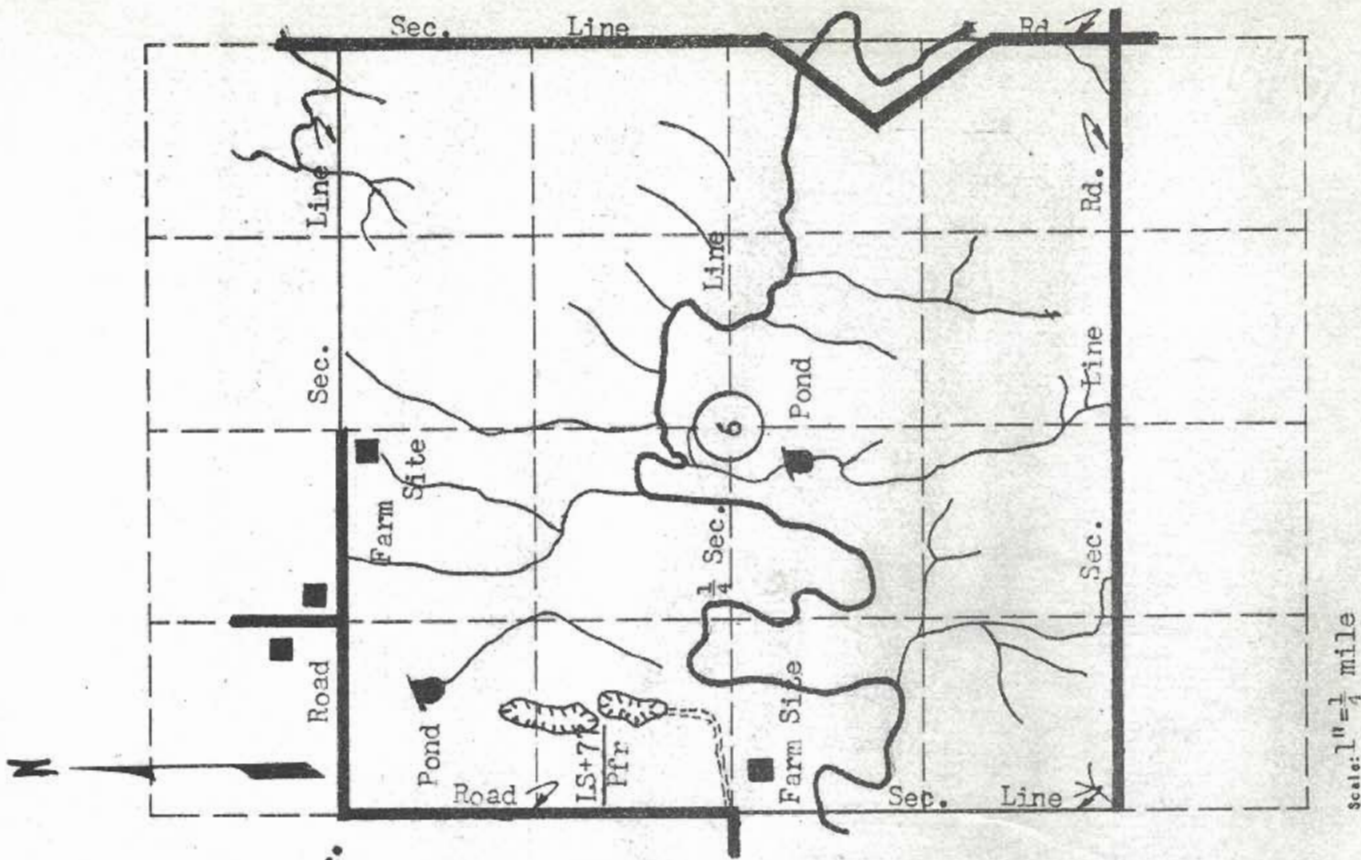
Site No. IS+77 Date June, 1965
Pfr
 Material Limestone County Marshall
 Location NW 1/4 Sec. 6 Twp. 1S Range 8E
 Owner R. D. Pribyl Cornhusker Court 42nd and O St. Lincoln, Nebr.
 name address
 Nature of deposit Dry Accessibility Good
 Status of site Open site; sampled

EXPLORATION DATA

Test Hole	Material at Bottom of Hole	Depth of over-Burden	Depth of Material	Percent Retained								Wash 200	G.F.	L.L.	P.L.	
				1 1/2	3/4	3/8	1/4	3/16	1/8	3/32	1/32					

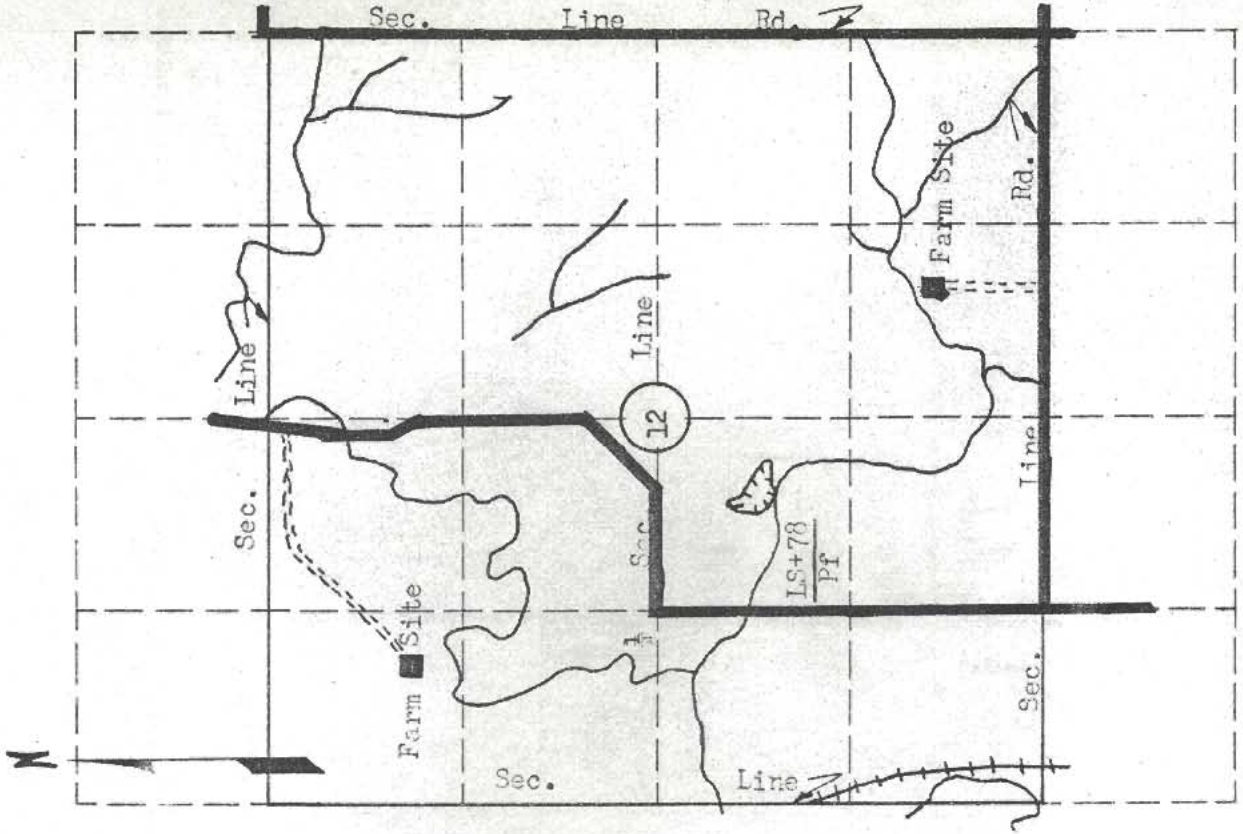
CORRELATION DATA

Geological Age Permian
 Geological Source Fort Riley Limestone Member
 Material Similar to Material reported on SHC form 619, # 58-33 and
Lab No. 14786, 85555
 Specific Gravity (Sat.) 2.25, 2.23 (Dry) 2.01, 2.03
 Los Angeles Weir (B) 86.4, (B) 64.7
 Absorption 10.30, 9.80 Soundness 0.90, 0.83
 Mt. Cu.Ft. _____ Str. Ratio _____
 Remarks _____



MATERIAL SURVEY REPORT

Site No. LS+78 Date June, 1965
pf
 Material Limestone County Marshall
 Location NE 1/4 SW 1/4 Sec. 12 Twp. 1S Range 7E
 Owner John Pribyl c/o Mrs. George Sible Odell, Nebraska
 name address
 Nature of Deposit Dry Accessibility Fair
 Status of Site Open site; sampled



EXPLORATION DATA

Test Hole	Material at bottom of Hole	Depth of over-Burden	Depth of Material	Percent Retained								Wash 200	G.F.	L.L.	P. I.		
				1/2	3/4	3/8	4	8	16	30	50					100	

CORRELATION DATA

Geological Age Permian
 Geological Source Florence Limestone Member
 Material Similar To Material reported on SHC form 619, # 58-27 and Lab. No. 77824, 77825, 78618, 14779
 Specific Gravity (sat.) 2.32, 2.41, 2.40, 2.34 (dry) 2.16
 Los Angeles Wear (A) 53.3, (A) 29.1, (A) 45.8, (B) 69.0
 Absorption 0.56, 5.00, 8.83, 8.37 Soundness 0.93, 0.90, 0.78, 0.96
 Wt. Cu.Ft. _____ Str. Ratio _____
 Remarks _____

MATERIAL SURVEY REPORT

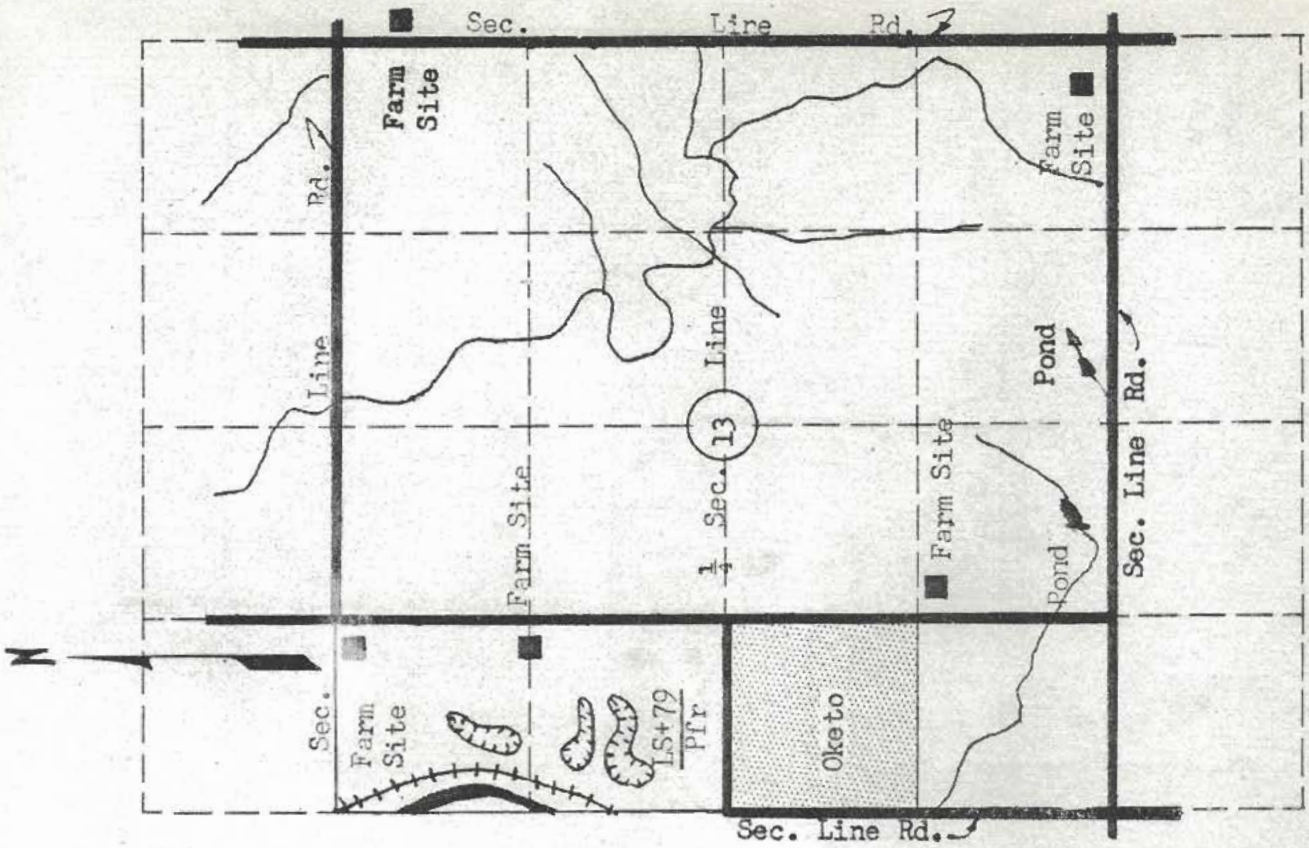
Site No. LS+79 Date June, 1965
PfF
 Material Limestone County Marshall
 Location NW 1/4 Sec. 13 Twp. 1S Range 7E
 Owner Marvin and Wada Argo (?) Oketo, Kansas
name address
 Nature of Deposit Dry Accessibility Good
 Status of Site Open site; sampled

EXPLORATION DATA

Test Hole	Material at Bottom of Hole	Depth of over-Burden	Depth of Material	Percent Retained					Wash 200	G.F.	L.L.	P.I.
				1 1/2	3/4	3/8	4	8				

CORRELATION DATA

Geological Age Permian
 Geological Source Fort Riley Limestone Member
 Material Similar To Material reported on SHC form 619, # 58-28 and
 Lab. No. 14785
 Specific Gravity (Sat.) 2.23 (Dry) 1.98
 Los Angeles Near (B) 43.0
 Absorption 12.27 Soundness 0.93
 Mt. Cu.Ft. _____ Str. Ratio _____
 Remarks _____



MATERIAL SURVEY REPORT

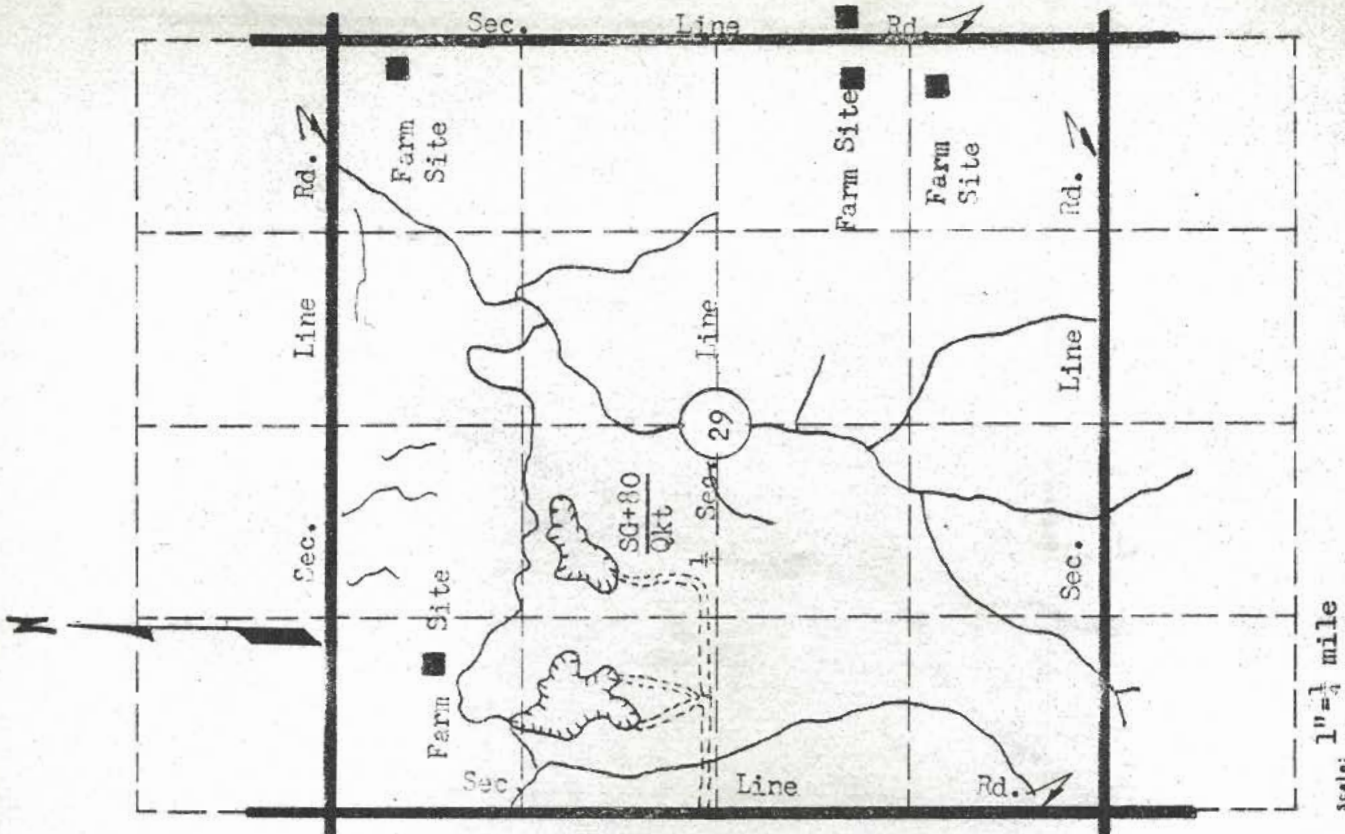
Site No. SG+80 Date June, 1965
Qkt
 Material Sand and Gravel County Marshall
 Location S 1/2 NW 1 Sec. 29 Twp. 1S Range 6E
 Owner Clarence and Selma Krouse 2660 S. 40th Lincoln, Nebraska
 address
 Nature of Deposit Dry Accessibility Good
 Status of Site Open site; sampled

EXPLORATION DATA

Test Hole	Material at bottom of Hole	Depth of over-burden	Depth of Material	Percent Retained							Wash 200	G.F.	L.L.	P.I.		
				1/2	3/4	1	3/8	1/2	3/4	1						

CORRELATION DATA

Geological Age Quaternary
 Geological Source Kansan Till
 Material Similar to Material reported on SHC form 619, # 58-6 and
 Lab. No. 62162
 Specific Gravity (Sat.) _____ (Dry) _____
 Los Angeles Wear (A) 33.7
 Absorption _____ Soundness 0.91
 Wt. Cu.Ft. _____ Str. Ratio _____
 Remarks _____



MATERIAL SURVEY REPORT

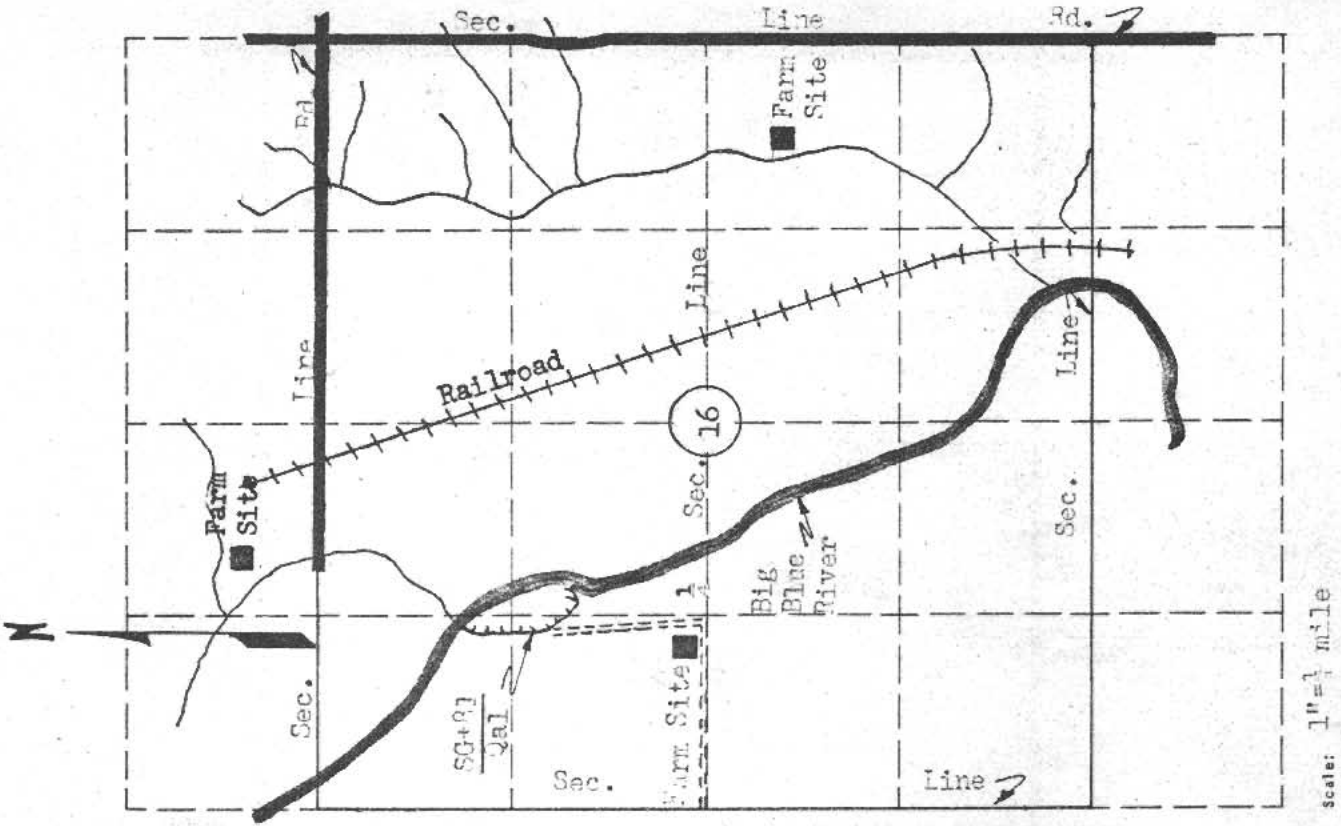
Site No. SG+81 Date June, 1965
Qal
 Material Sand and Gravel County Marshall
 Location NW 1/4 Sec. 16 Twp. 2S Range 7E
 Owner Elmer J. and Gladys Anderson Marysville, Kansas
 near address
 Nature of Deposit Wet Accessibility Fair
 Status of Site Open site; sampled

EXPLORATION DATA

Test Hole	Material at Bottom of Hole	Depth of over-burden	Depth of Material	Percent Retained								Wash 200	G.F.	L.L.	P.I.	
				1 1/2	3/4	3/8	4	8	16	30	50					100

CORRELATION DATA

Geological Age Quaternary
 Geological Source Alluvium
 Material Similar to Material reported on SHC form 633 and
Lab. No. 25511
 Specific Gravity (sat.) 2.60 (Dry)
 Los Angeles Wear (D) 34.8
 Absorption _____ Soundness _____
 Wt. Cu.Ft. 111.66 Str. Ratio 1 day 1.54, 3 day 1.19
 Remarks Being pumped from Big Pine River.



MATERIAL SURVEY REPORT

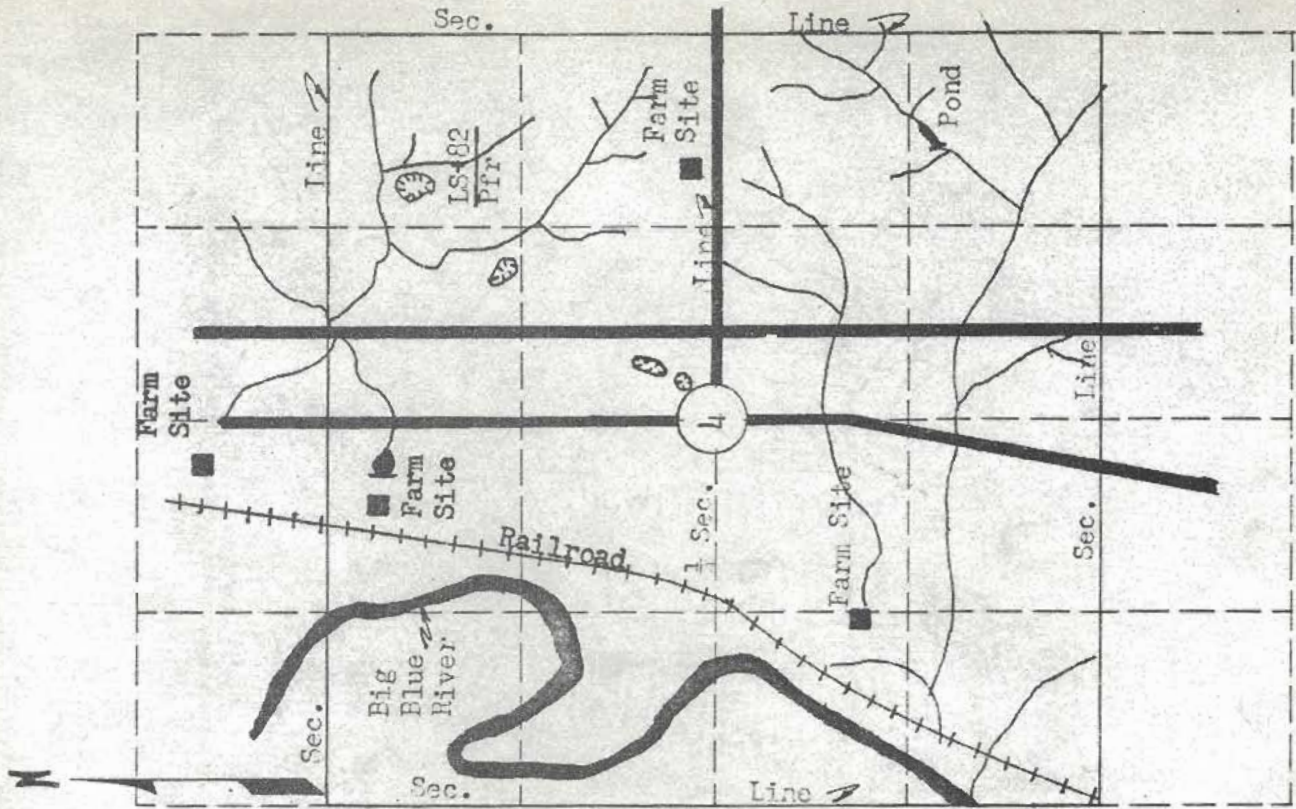
Site No. LS+82
Pfr
 Material Limestone
 Location NE 1/4 Sec. 4 Twp. 3S Range 7E
 Owner Aloyeious P. and Loretta M. Kongs Marysville, Kansas
 name address
 Nature of Deposit Dry Accessibility Fair
 Status of Site Open site; sampled

EXPLORATION DATA

Test Hole	Material Bottom of Hole	Depth of cover-Burden	Depth of Material	Percent Retained						Wash 200	G.F.	L.L.	P.I.					
				1/2	3/4	3/8	4	8	16					30	50	100		

CORRELATION DATA

Geological Age Permian
 Geological source Fort Riley Limestone Member
 Material similar to Material reported on SHC form 619, # 58-17 and
 Lab. No. 11897
 Specific Gravity (Sat.) 2.38 (Dry) 2.21
 Los Angeles Near 42.3
 Absorption 7.47 Soundness 0.72
 Mt. Cu.Ft. _____ Str. Ratio _____
 Remarks _____



Scale: 1" = 1/2 mile

MATERIAL SURVEY REPORT

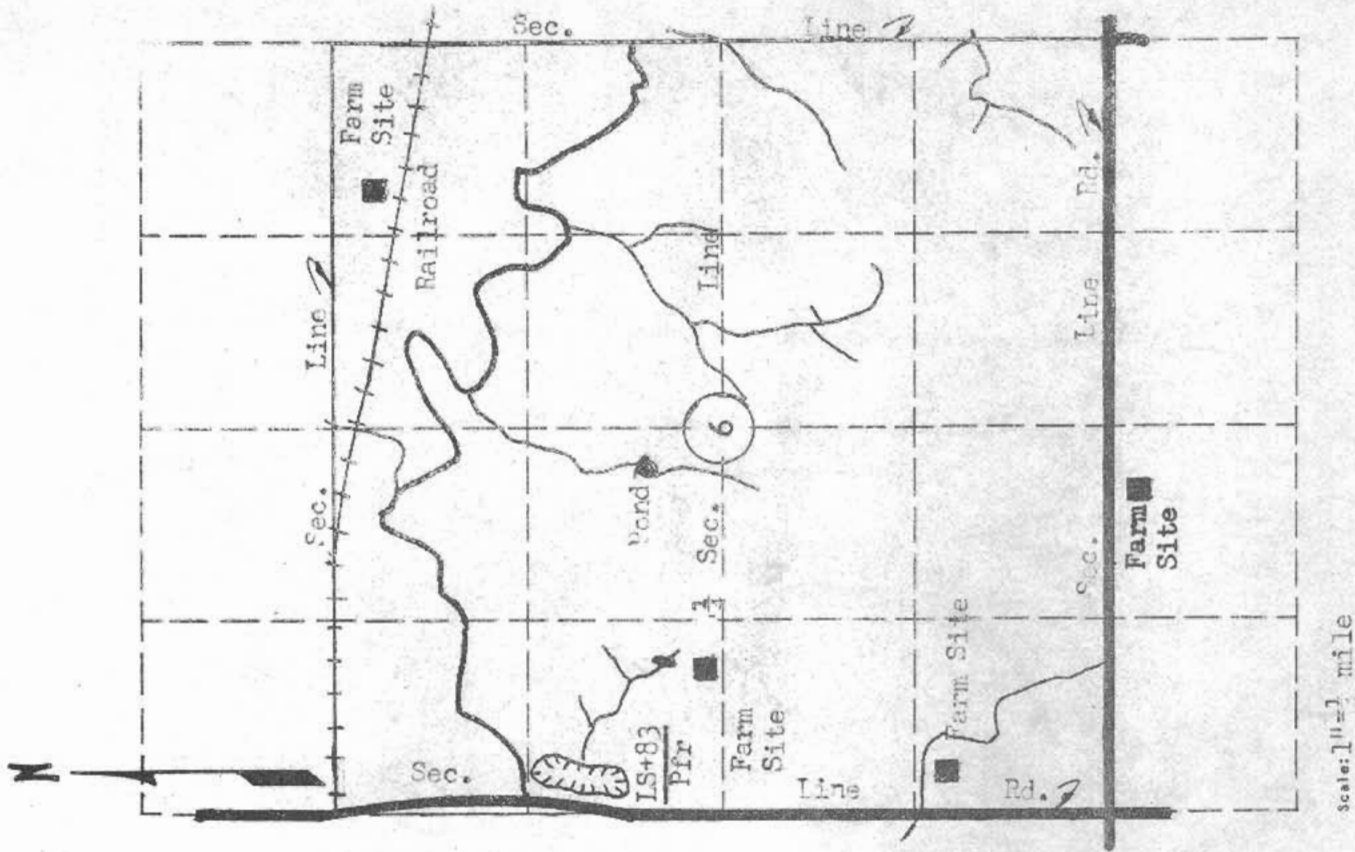
Site No. IS+83 Date June, 1965
Pfr
 Material Limestone County Marshall
 Location SW $\frac{1}{4}$ NW $\frac{1}{4}$ Sec. 6 Twp. 3S Range 8E
 Owner J. K. McMillan Marysville, Kansas
 name address
 Nature of Deposit: Dry Accessibility Good
 Status of Site Open site; sampled

EXPLORATION DATA

Test Hole	Material at Bottom of Hole	Depth of over-Burden	Depth of Material	Percent Retained					Wash 200	G.F.	L.L.	P.I.
				1/2	3/4	1	1 1/2	2				

CORRELATION DATA

Geological Age Permian
 Geological Source Fort Riley Limestone Member
 Material similar to Material reported on SHC form 619, # 53-36 and Lab. No. 14788
 Specific Gravity (Sat.) 2.29 (Dry) 2.09
 Los Angeles Yield (B) 79.6
 Absorption 9.26 Soundness 0.77
 Wt. Cu.Ft. _____ Str. Ratio _____
 Remarks _____



MATERIAL SURVEY REPORT

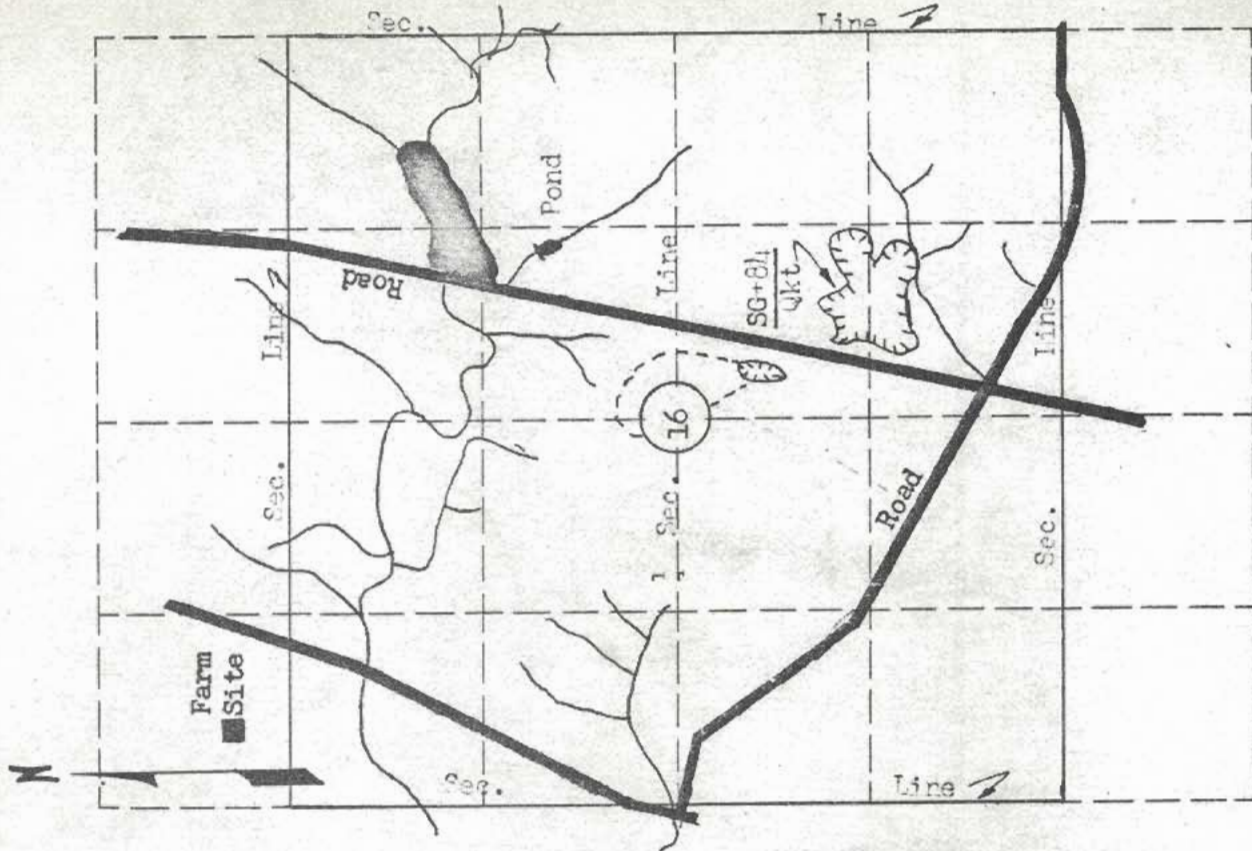
Site No. SG+84
Qkt Date June, 1965
 Material Sand and Gravel County Marshall
 Location SE 1 Sec. 16 Twp. 3S Range 7E
 Owner George Stichternath Marysville, Kansas
 name address
 Nature of Deposit Dry Accessibility Good
 Status of Site Open site; sampled

EXPLORATION DATA

Test Hole	Material at Bottom of Hole	Depth of over-burden	Depth of Material	Percent Retained						Wash 200	G.F.	L.L.	P.I.
				1 1/2	3/4	3/8	1/4	1/8	30				

CORRELATION DATA

Geological Age Quaternary
 Geological Source Kansan Till
 Material Similar To Material reported on SHC form 619, # 58-13 and
 Lab. No. 62163
 Specific Gravity (Sat.) _____ (Dry) _____
 Los Angeles Wear (D) 28.0
 Absorption _____ Soundness 0.90
 Mt. Cu.Ft. _____ Str. Ratio _____
 Remarks This site has expansion possibilities to the north.



Scale: 1" = 1/4 mile

MATERIAL SURVEY REPORT

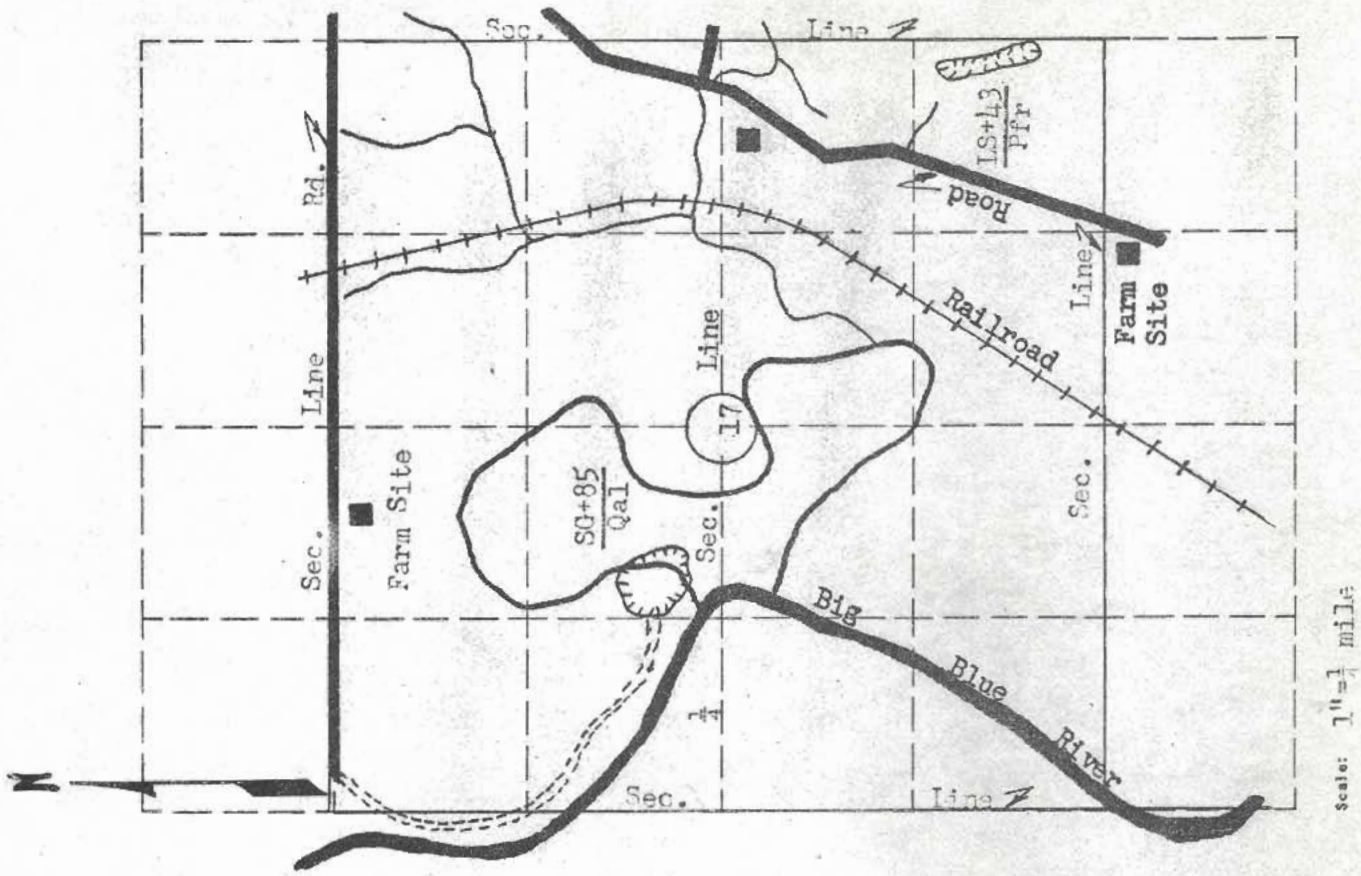
Site No. SG+85 Date June, 1965
Qal
 Material Sand and Gravel County Marshall
 Location SE 1/4 NW 1/4 Sec. 17 Twp. 3S Range 7E
 Owner Alta Hammett Et. Al. Marysville, Kansas
name address
 Nature of Deposit Wet Accessibility Good
 Status of Site Open site; sampled

EXPLORATION DATA

Test Hole	Material at Bottom of Hole	Depth of over-burden	Depth of Material	Percent Retained					Wash 200	G.F.	L.L.	P.I.
				1/2	3/4	3/8	4	8				

CORRELATION DATA

Geological Age Quaternary
 Geological Source Alluvium
 Material Similar to Material reported on SHC form 619, # 58-38 and
 Lab. No. 5514
 Specific Gravity (Sat.) 2.57 (Dry)
 Los Angeles Wear (C) 37
 Absorption Soundness 0.90
 Wt. Cu.Ft. 119.3 Str. Ratio 1 day 168, 3 day 150
 Remarks



MATERIAL SURVEY REPORT

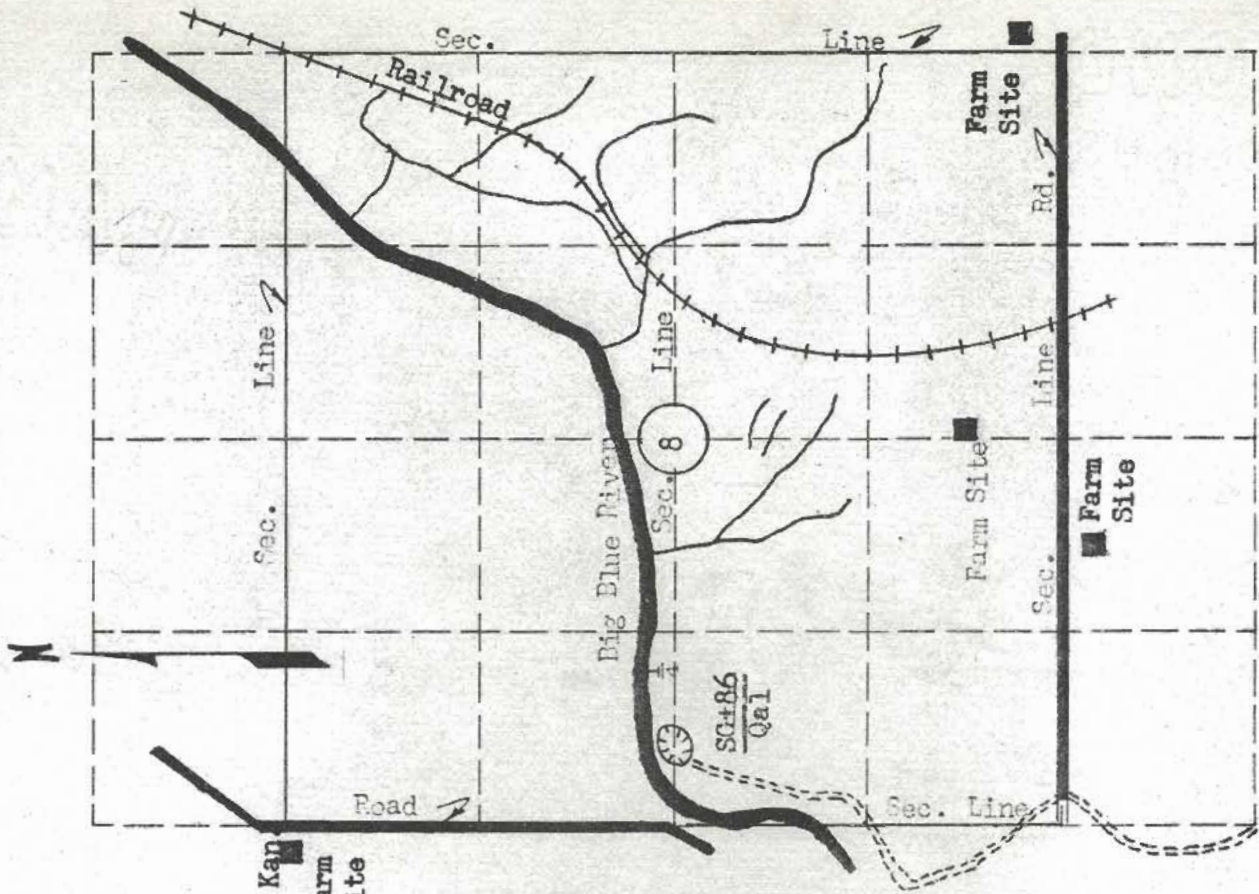
Site No. SO+86
Qal
 Material Sand and Gravel
 Location NW 1/4 SW 1/4 Sec. 8 Twp. 3S Range 7E
 County Marshall
 Owner Archie B. Dexter c/o Alice Cottrell 304 N. 17th Marysville, Kan
 name address
 Nature of Deposit Wet Accessibility Fair Farm Site
 Status of Site Open site; sampled

EXPLORATION DATA

Test hole	Material at Bottom of hole	Depth of over-burden	Depth of Material	Percent Retained								Wash 200	G.F.	L.L.	P.I.		
				1 1/2	3/4	3/8	4	8	16	30	50					100	

CORRELATION DATA

Geological Age Quaternary
 Geological Source Alluvium
 Material similar to Material reported on SHC form 612, # 58-46 and Lab. No. 11898
 Specific Gravity (Sat.) 2.60 (Dry)
 Los Angeles Wear (C) 36.6
 Absorption 0.95
 Wt. Cu.ft. 114.20 Str. Ratio 1 day 1.30, 3 day 1.27
 Remarks



MATERIAL SURVEY REPORT

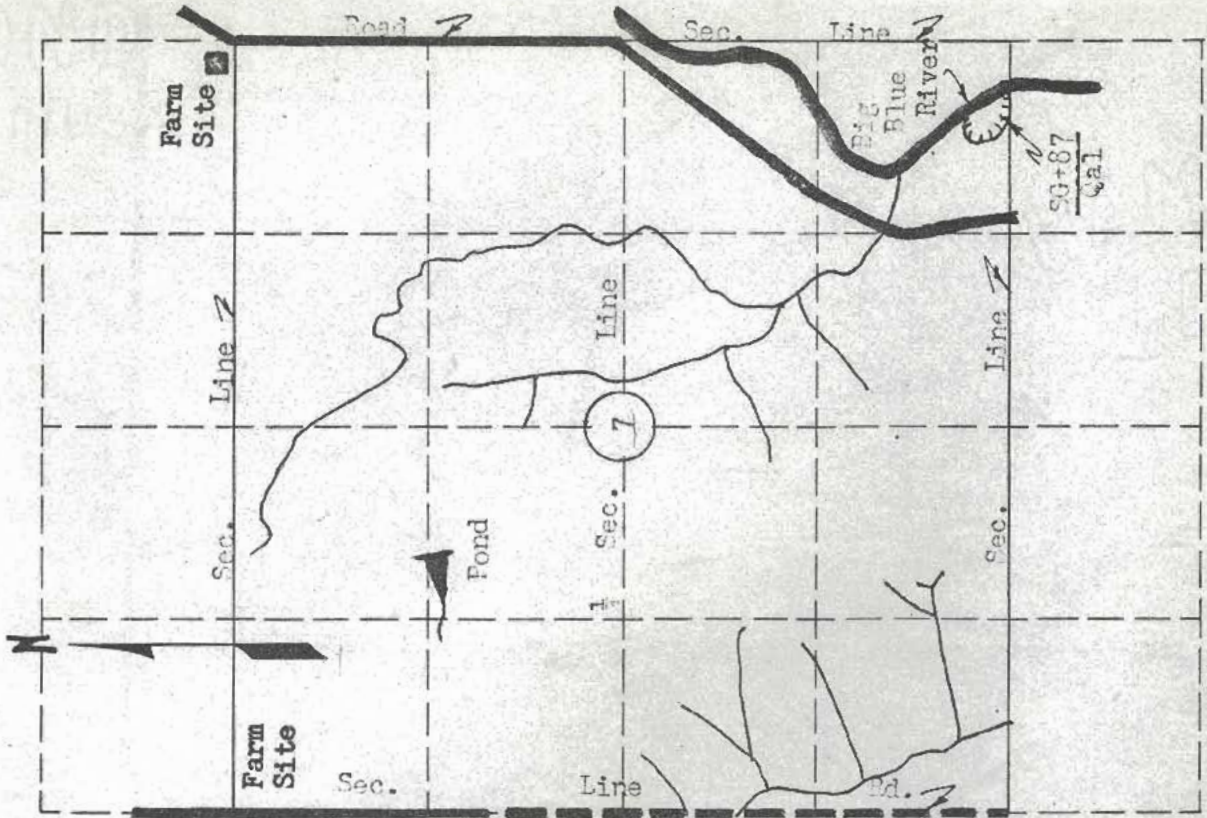
Site No. SG+87
Qal
 Date June, 1965
 Material Sand and Gravel County Marshall
 Location SE¹ Sec. 7 Twp. 3S Range 7E
 Owner Archie B. Dexter c/o Alice Cottrell 304 N. 17th Marysville
 address
 Nature of Deposit Wet Accessibility Good
 Status of Site Open site; sampled

EXPLORATION DATA

Test Hole	Material at Bottom of Hole	Depth of over-Burden	Depth of Material	Percent Retained							Wash 200	G.F.	L.L.	P.I.			
				1/2	3/4	3/8	4	8	16	30					50	100	

CORRELATION DATA

Geological Age Quaternary
 Geological Source Alluvium
 Material Similar To Material reported on SHC Form 633 and
Lab. No. 99045
 Specific Gravity (Sat.) 2.61 (Dry)
 Los Angeles Near (D) 33.2
 Absorption _____ Soundness 0.95
 Wt. Cu.Ft. 116.4 Str. Ratio 1 day 1.52, 3 day 1.41
 Remarks _____



Scale: 1" = 1/4 mile

MATERIAL SURVEY REPORT

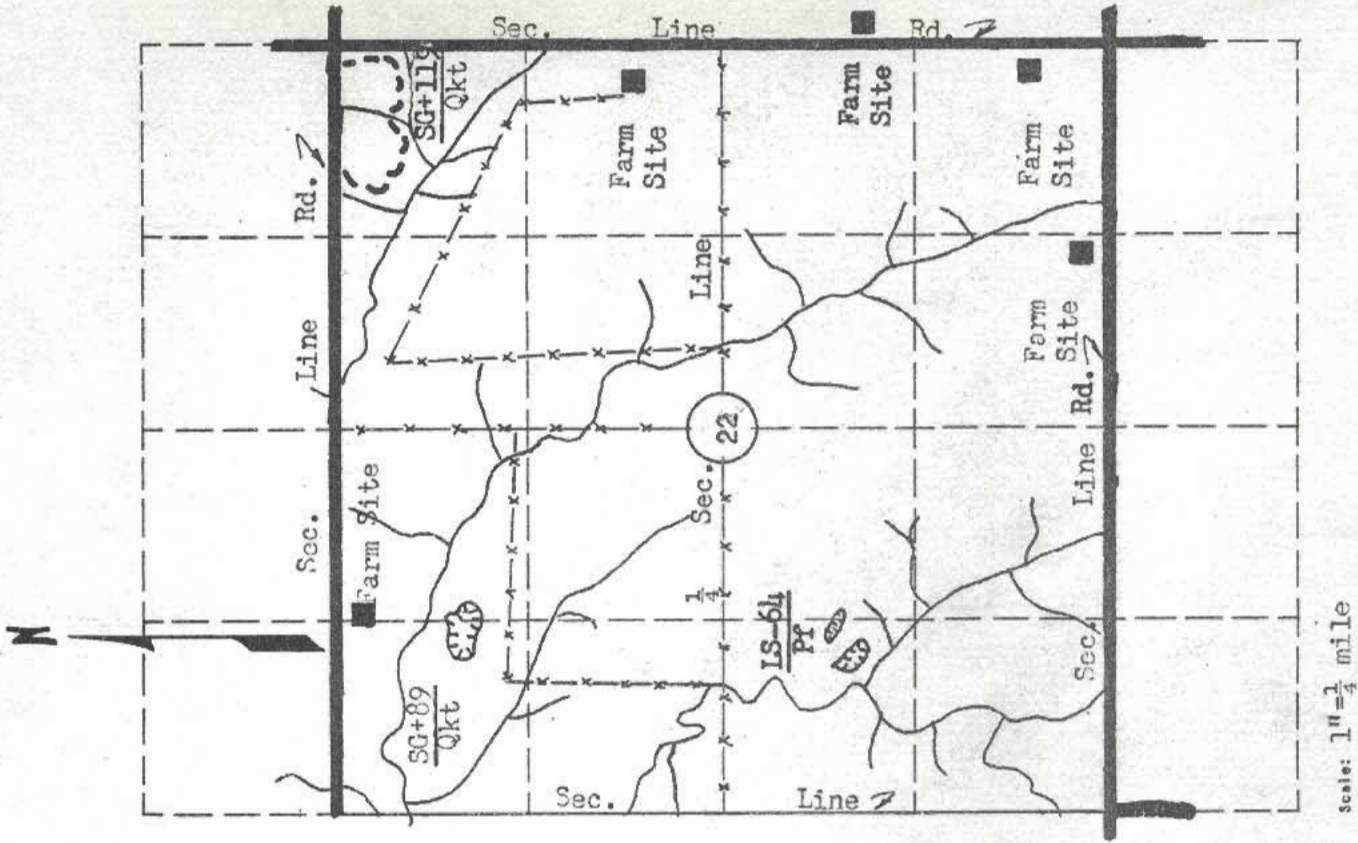
Site No. SG+89 Date June, 1965
Qkt
 Material Sand and Gravel County Marshall
 Location N $\frac{1}{2}$ NW $\frac{1}{4}$ Sec. 22 Twp. 3S Range 7E
 Owner Marie Nietfeld Marysville, Kansas
name address
 Nature of Deposit Dry Accessibility Fair
 Status of Site Open site; sampled

EXPLORATION DATA

Test hole	Material at bottom of hole	Depth of over-burden	Depth of Material	Percent Retained								Wash 200	S.F.	L.L.	P.I.	
				1/2	3/4	3/8	4	8	16	30	50					100
Lab. No. <u>65-2745</u>				<u>0</u>	<u>20</u>	<u>31</u>	<u>44</u>	<u>57</u>	<u>70</u>	<u>81</u>	<u>90</u>	<u>92</u>	<u>7</u>		<u>39</u>	<u>20</u>

CORRELATION DATA

Geological Age Quaternary
 Geological Source Kansan Till
 Material Similar to material report on Lab. No. 65-2745
 Specific Gravity (Set.) (Dry)
 Los Angeles Wear _____
 Absorption _____ Soundness _____
 Mt. Cu.Ft. _____ Str. Ratio _____
 Remarks Test data not available when this report was published.



Scale: 1" = 1/4 mile

MATERIAL SURVEY REPORT

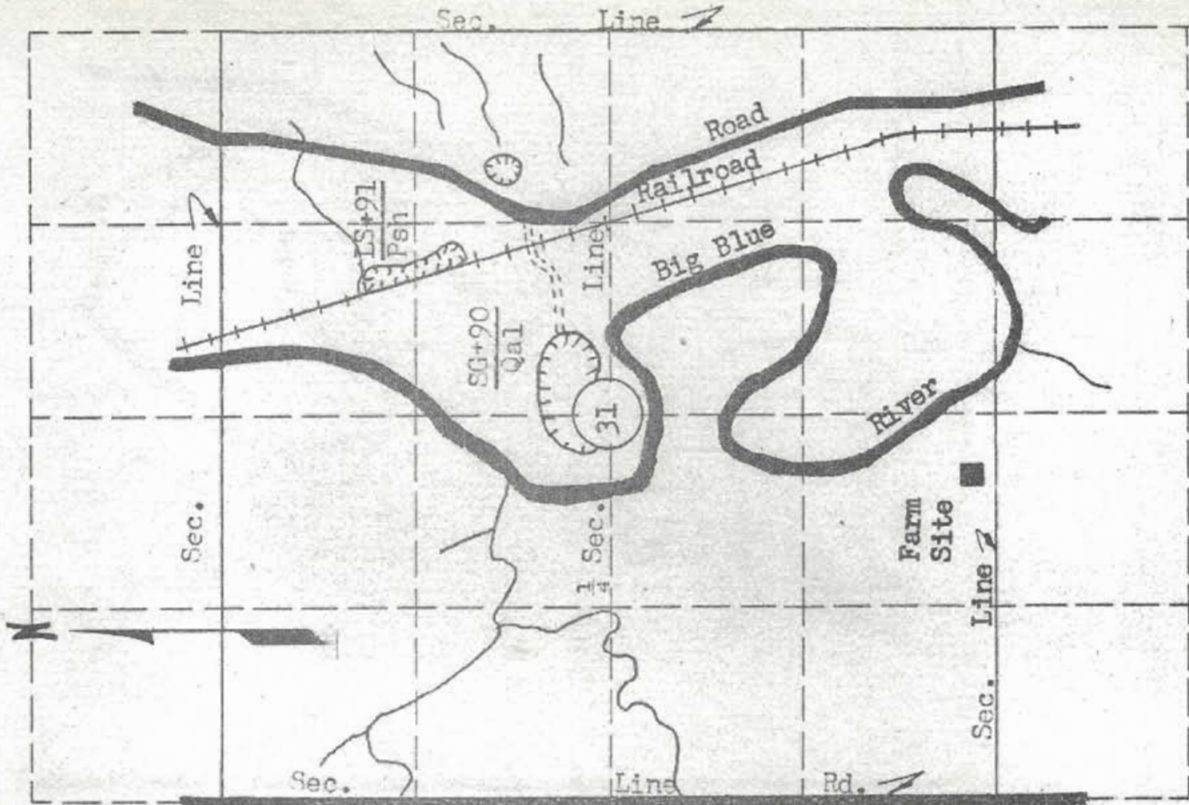
Site No. SG+90
Gal
 Material Sand and Gravel
 Location SW 1/4 NE 1/4 Sec. 31 Twp. 2S Range 7E
 Owner Dewy and Stella Hammett Blue Rapids, Kansas
 Nature of deposit Wet Accessibility Good
 Status of Site Open site; sampled

EXPLORATION DATA

Test hole at bottom of hole	Material at bottom of hole	Depth of overburden	Percent Retained							S.F.	L.L.	P.L.	
			1/2	3/4	1	3/8	4	8	16				30
			0	1/4	3/4	59	82	97	100	1	3.89		

CORRELATION DATA

Geological Age Quaternary
 Geological Source Alluvium
 Material Similar to Material reported on SHC form 619, # 58-54 and
 Lab. No. 18675
 Specific Gravity (sat.) 2.60 (dry)
 Los Angeles Weir (C) 37.3
 Absorption 0.60 soundness 0.95
 Mt. Co. Ft. 113.47 Str. Ratio 1 day 1.70, 3 day 1.56
 Remarks _____



MATERIAL SURVEY REPORT

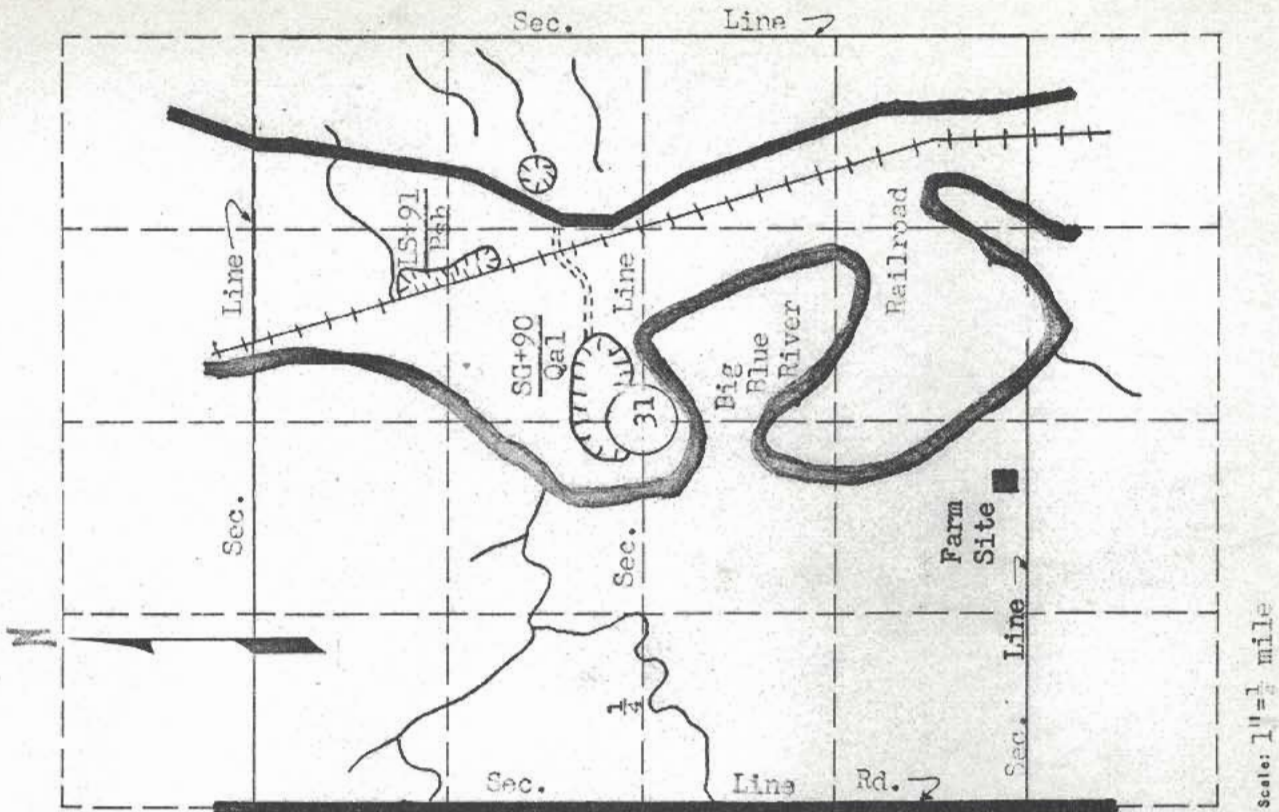
Site No. IS+91
Psh
 Material Limestone
 Location NE 1 Sec. 31 Twp. 38 Range 7E
 County Marshall
 Owner Dewy and Stella Hammett Blue Rapids, Kansas
 Nature of Deposit Dry Accessibility Good
 Status of Site Open site; sampled

EXPLORATION DATA

Test Hole	Material at Bottom of Hole	Depth of over-burden	Depth of Material	Percent Retained							Wash 200	G.F.	L.L.	P.I.				
				1 1/2	3/4	3/8	4	8	16	30					50	100		

CORRELATION DATA

Geological Age Permian
 Geological Source Schroyer Limestone Member
 Material Similar To Material reported on SHC form 619, # 58-57 and Lab. No. 26604
 Specific Gravity (sat.) 2.51 (Dry) 2.43
 Los Angeles Wear (B) 29.8
 Absorption 3.32 Soundness 0.95
 Mt. Cu.ft. _____ Str. Ratio _____
 Remarks _____



MATERIAL SURVEY REPORT

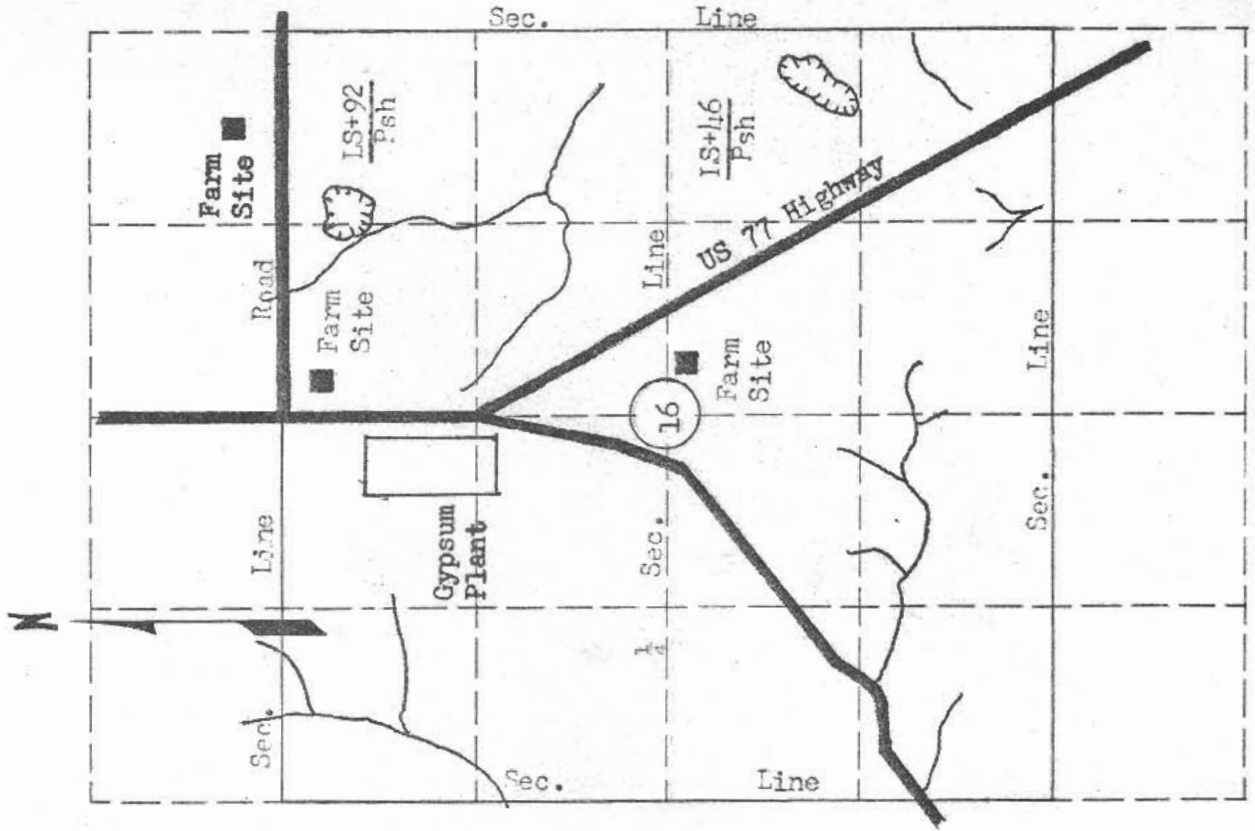
Site No. LS+92
Psh
 Material Limestone
 Location N $\frac{1}{2}$ NE $\frac{1}{4}$ Sec. 16 Twp. LS Range 7E
 County Marshall
 Owner Raymond B. Kathe address Blue Rapids, Kansas
 Nature of Deposit: Dry Accessibility Good
 Status of Site Open site; sampled

EXPLORATION DATA

Test Hole	Material at bottom of hole	Depth of overburden	Depth of Material	Percent Retained					Wash 200	G.F.	L.L.	P.I.
				1 1/2	3/4	3/8	1/8	16				

CORRELATION DATA

Geological Age Permian
 Geological Source "Havensville Reef" and Schroyer Limestone Member
 Material Similar To Material reported on SMC form 619, # 58-35 and Lab. No. 69524, 14787, 15092
 Specific Gravity (Sat.) 2.23, 2.31 (Dry) 2.02, 2.42
 Los Angeles Wear (B) 35.9, (B) 32.1
 Absorption 10.20, 4.70 Soundness 0.39, 0.92, 0.93
 Mt. Cu.Ft. _____ Str. Ratio _____
 Remarks _____



Scale: 1" = 1/4 mile

MATERIAL SURVEY REPORT

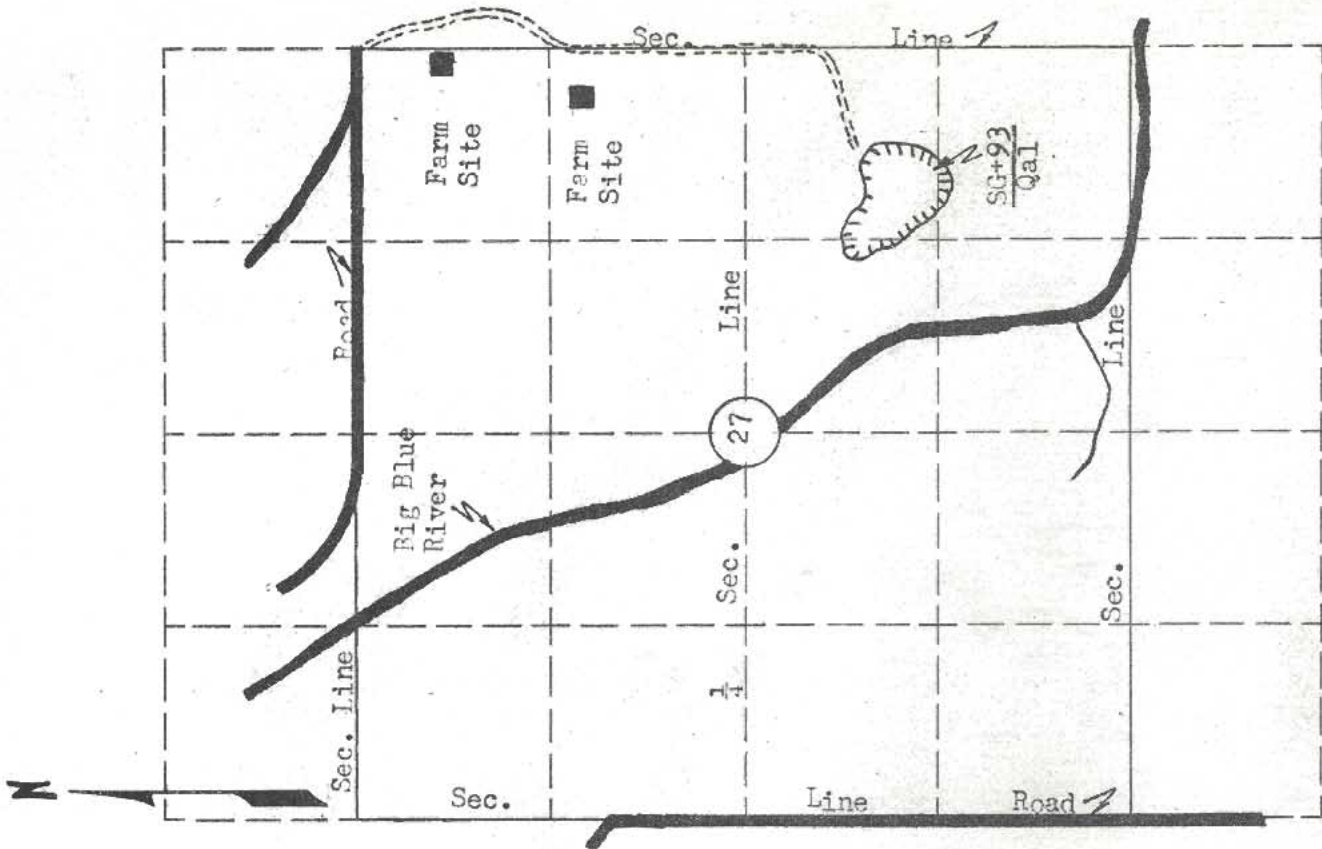
Site No. SG+93 Date June, 1965
Qa1
 Material Sand and Gravel County Marshall
 Location SE 1/4 Sec. 27 Twp. 4S Range 7E
 Owner Federal Government address
 Nature of Deposit Wet Accessibility Fair
 Status of Site Open site; sampled

EXPLORATION DATA

Test Hole	Material at Bottom of Hole	Depth of over-Burden	Depth of Material	Percent Retained						Wash 200	S.F.	L.L.	P.I.				
				1 1/2	3/4	3/8	4	8	16					30	50	100	

CORRELATION DATA

Geological Age Quaternary
 Geological Source Alluvium
 Material Similar to Material reported on SHC form 619, # 58-50 and
Lab. No. 15411, 27237
 Specific Gravity (sat.) 2.60, 2.60 (dry)
 Los Angeles Near (C) 38.3, (D) 33.3
 Absorption 1.0, 0.8 Soundness 0.93, 0.98
 Wt. Cu.Ft. 119.25, 114.51 Str. Ratio 1 day 1.66, 3 day 1.62
1 day 1.68, 3 day 1.58
 Remarks



MATERIAL SURVEY REPORT

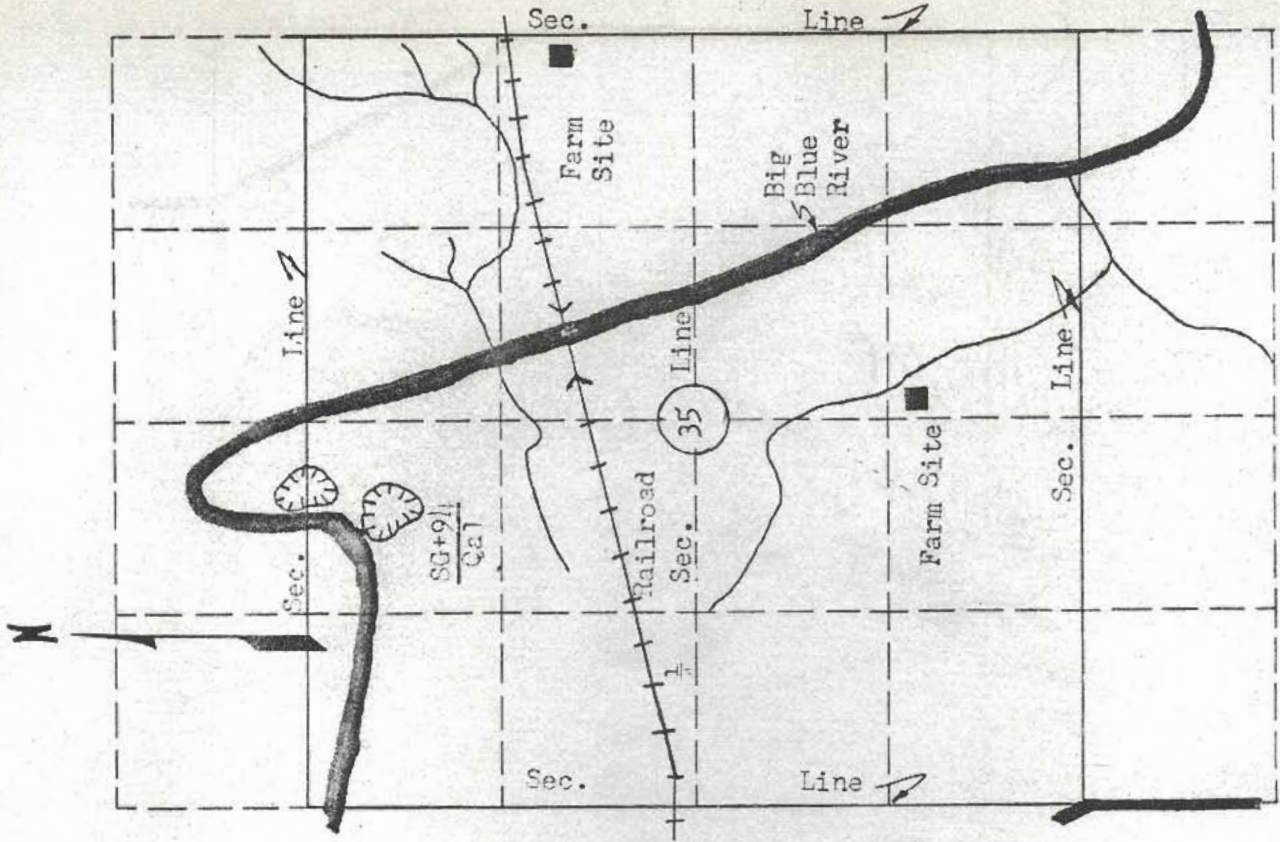
Site No. SG+94 Date June, 1965
Qal
 Material Sand and Gravel County Marshall
 Location N7A Sec. 35 Twp. 4S Range 7E
 Owner Federal Government
 Nature of Deposit Wet Accessibility Poor
 Status of Site Open site; sampled

EXPLORATION DATA

Test Hole	Material at Bottom of Hole	Depth of over-burden	Depth of Material	Percent Retained					Wash 200	S.F.	L.L.	P.I.				
				1 1/2	3/4	3/8	1/4	3/16								
Lab. No. 5513																
Lab. No. 909144				0	5	9	20	47	63	80	96	99	1	4.13		

CORRELATION DATA

Geological Age Quaternary
 Geological Source Alluvium
 Material Similar to Material reported on SHC form 619, # 58-25
 Lab. No. 5513, 909144
 Specific Gravity (Sat.) 2.58 (dry)
 Los Angeles Wear (C) 36.4, (C) 35.0
 Absorption 0.96, 0.98
 Mt. Co. Ft. 119.3, 119.3 Str. Ratio 1 day 1.56, 3 day 1.41
 Remarks 1 day 1.37, 3 day 1.39



Scale: 1" = 1 mile

MATERIAL SURVEY REPORT

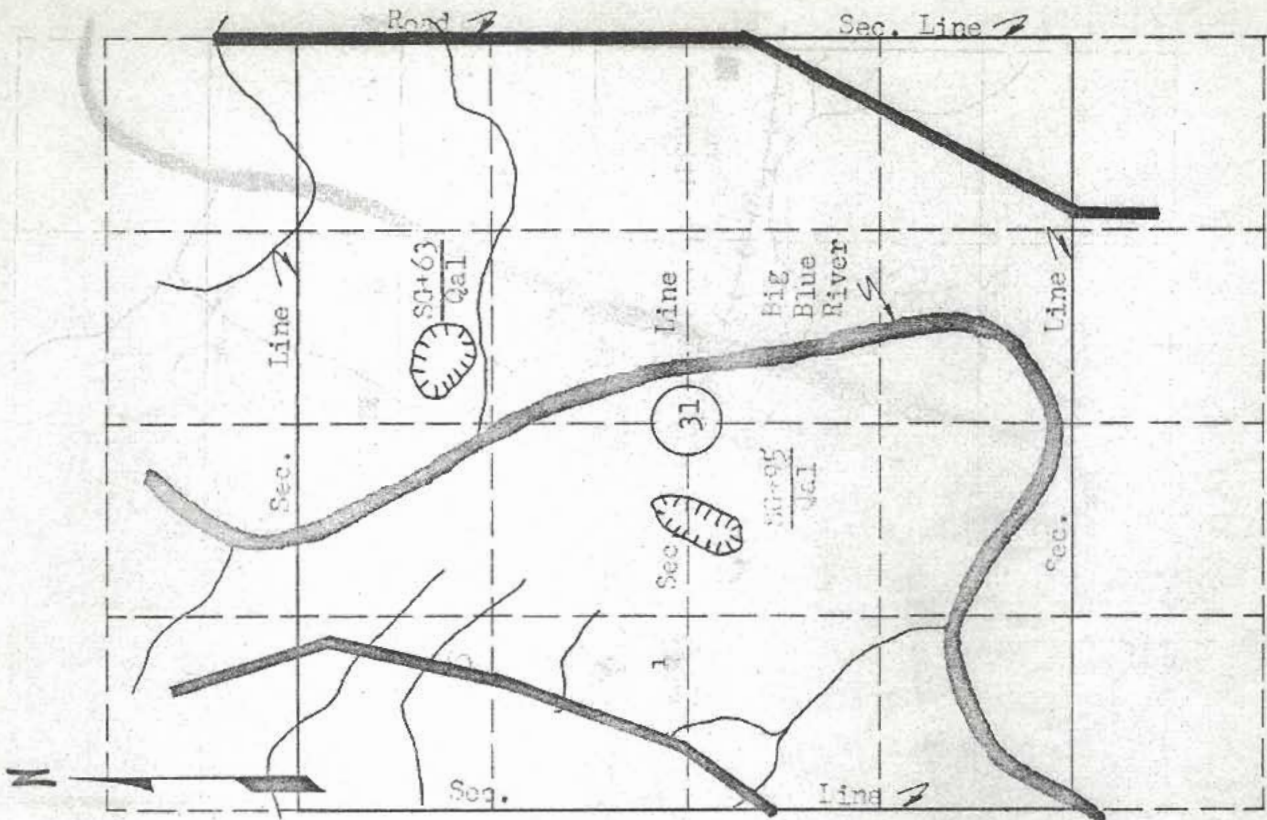
Site No. SC+95 Date June, 1965
Qal
 Material Sand and Gravel County Marshall
 Location NW 1/4 SW 1/4 Sec. 31 Twp. 5S Range 8E
 Owner Federal Government address
 Nature of Deposit Dry Accessibility Poor
 Status of Site Open site; sampled

EXPLORATION DATA

Test Hole	Material at Bottom of Hole	Depth of over-burden	Depth of Material	Percent Retained								Wash 200	S.F.	L.L.	P.I.	
				1/2	3/4	3/8	1/4	3/16	1/8	1/16	3/32					1/32
			0	2	5	15	31	53	76	93	98	1.32	3.75			

CORRELATION DATA

Geological Age Quaternary
 Geological Source Alluvium
 Material Similar To Material reported on SHE Form 633, Lab. No. 22947
 Specific Gravity (Sat.) 2.60 (Dry)
 Los Angeles Wear (D) 34.6
 Absorption 1.21 Soundness 0.98
 Wt. Co.Ft. 114.55 Str. Ratio 1 day 1.51, 3 day 1.52
 Remarks



Scale: 1" = 1/2 mile

MATERIAL SURVEY REPORT

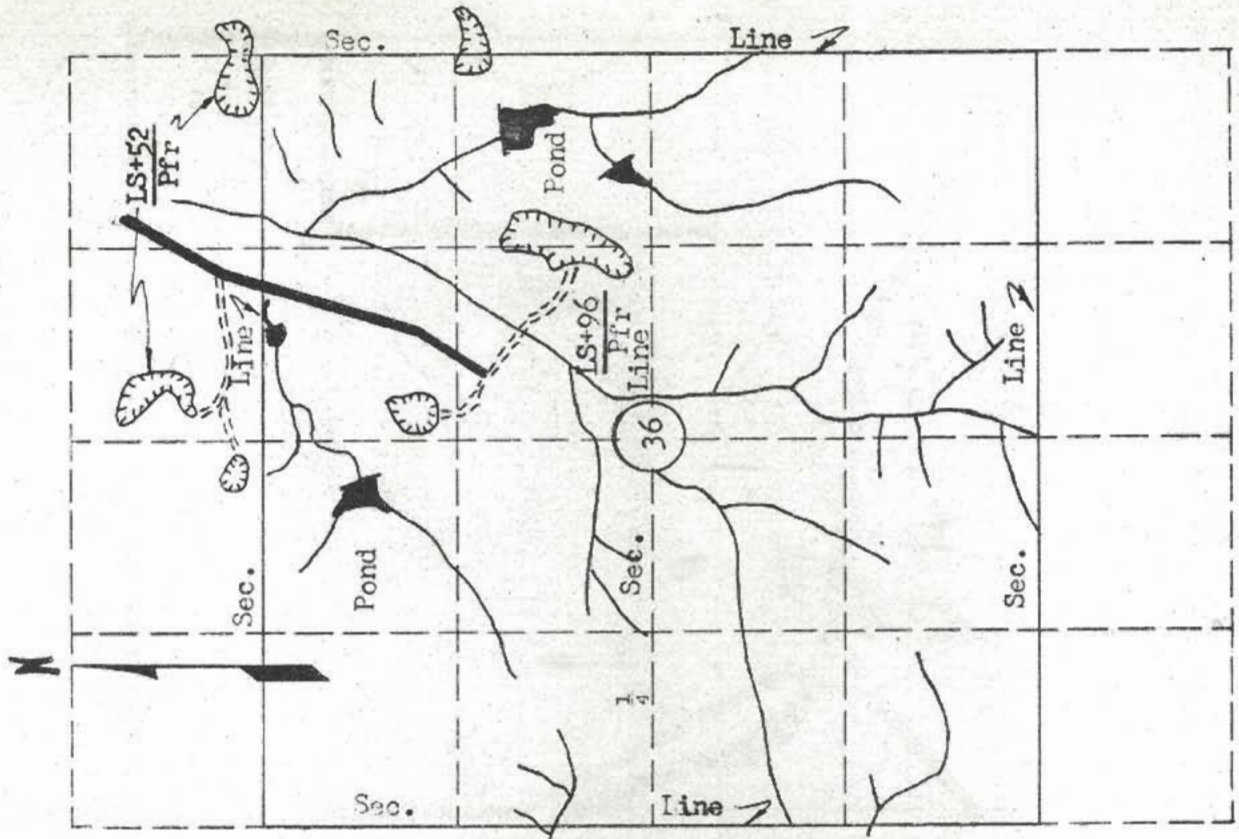
Site No. LS+96
Pfr
 Material Limestone
 Location NE1 Sec. 36 Twp. 4S Range 6E
Blue Rapids, Kansas
 Owner Fred L. Stocks
 Nature of Deposit Dry Accessibility Fair
 Status of Site Open site; sampled

EXPLORATION DATA

Test Hole	Material at bottom of Hole	Depth of overburden	Depth of Material	Percent Retained					Mesh 200	S.F.	L.L.	P.I.
				1/2	3/4	1	16	30				

CORRELATION DATA

Geological Age Permian
 Geological Source Fort Riley Limestone Member
 Material Similar to Material reported on SIC form 619, # 58-59 and
 Lab. No. 23788
 Specific Gravity (Sat.) 2.34 (Dry) 2.19
 Los Angeles Wear 6.84
 Absorption 0.94
 Wt. Cu-ft. _____ Str. Ratio _____
 Remarks _____



Scale: 1" = 1/4 mile

MATERIAL SURVEY REPORT

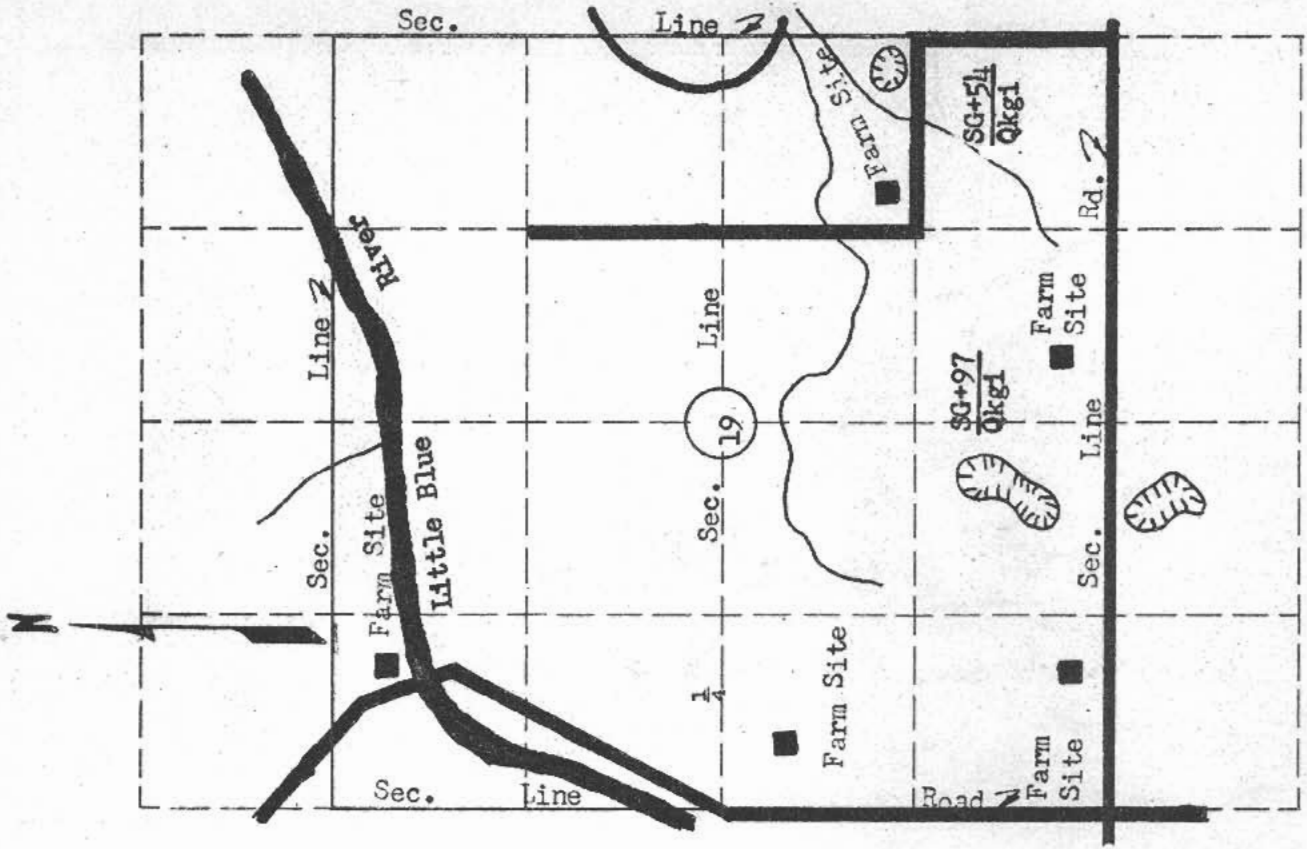
Site No. SG+97
Qkgl
 Date June, 1965
 Material Sand and Gravel county Marshall
 Location SE 1/4 SW 1/4 Sec. 19 Twp. 4S Range 7E
 Owner Iris L. Stryker name Blue Rapids, Kansas address
 Nature of Deposit Wet Accessibility Good
 Status of Site Open site; sampled

EXPLORATION DATA

Test Hole	Material at bottom of Hole	Depth of over-burden	Depth of Material	Percent Retained							Wash 200	G.F.	L.L.	P.I.	
				1/2	3/4	5/8	3/8	5/16	3/16	1/8					

CORRELATION DATA

Geological Age Quaternary
 Geological Source Grand Island Formation
 Material Similar To Material reported on SHC form 619, # 58-39 and
 Lab. No. 8877L, 96882
 Specific Gravity (Sat.) 2.60, 2.59 (Dry)
 Los Angeles Weir (D) 35.9 (C) 39.0
 Absorption: 0.96, 0.98 Soundness
 U.S. Cu. Ft. 107.9, 106.6 Str. Ratio 1 day 1.94, 3 day 1.46
 Remarks 1.30



Scale: 1" = 1/4 mile

MATERIAL SURVEY REPORT

Site No. SG+98
Qkg1
 Material Sand and Gravel
 Location SE 1/4 SE 1/4 Sec. 24 Twp. 4S Range 6E
 County Marshall
 Owner Ester M. and Theodore F. Musil Blue Rapids, Kansas
 address
 Nature of deposit Dry Accessibility Good
 Status of site Open site; sampled

EXPLORATION DATA

Test hole	Material at bottom of hole	Depth of over-burden	Depth of Material	Percent Retained								Wgh. 200	G.F.	L.L.	P.I.	
				1/2	3/4	3/8	4	8	16	30	50					100

CORRELATION DATA

Geological Age Quaternary
 Geological Source Grand Island Formation
 Material Similar to Material reported on SHC form 619, # 58-24 and
 Lab. No. 591198
 Specific Gravity (Sat.) 2.57 (Dry)
 Los Angeles Near (D) 32.9
 Absorption 0.94 Soundness
 Wt. Cu. Ft. 110.8 Str. Ratio 1 day 1.05, 3 day 1.10
 Remarks

