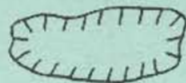


APPENDIX I

The following site data forms are designated as "open sites; not sampled." The sites described herein are depicted on the county materials map as a "○".

LEGEND



This symbol on the site data form represents an open site.

MATERIAL SURVEY REPORT

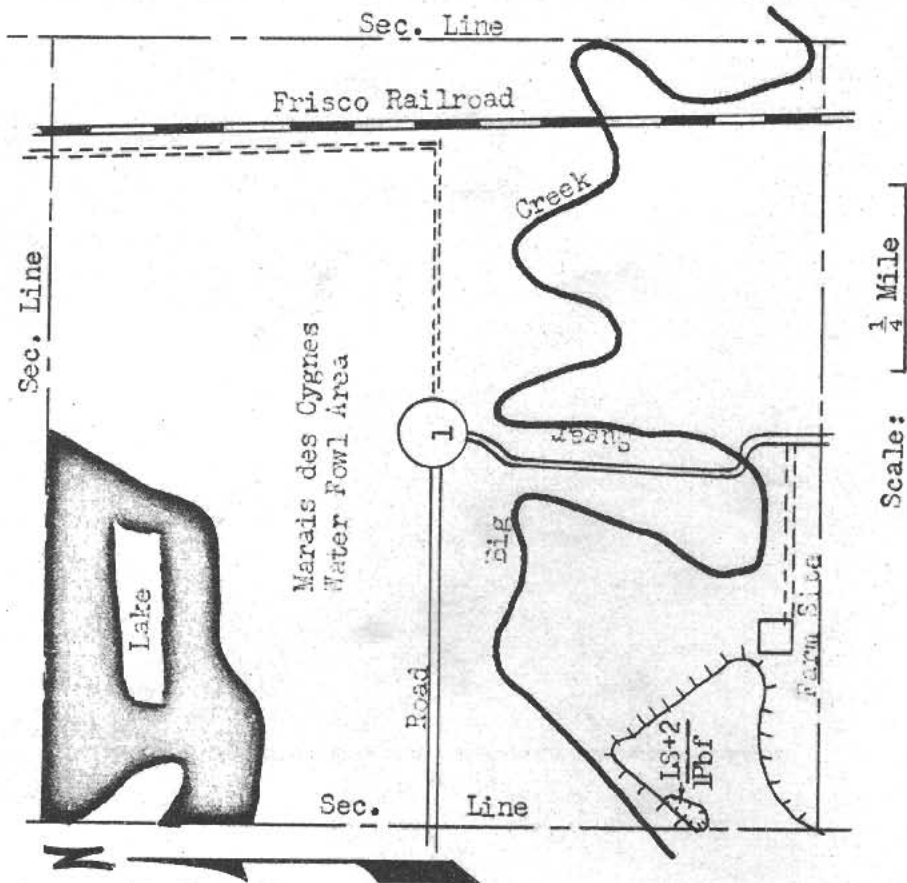
Site No. LS+2 Date August 1964
Pbf
 Material Limestone County Linn
 Location SW 1/4, SW 1/4 Sec. 1 Twp. 21S Range 24E
 Owner John B. Gilstrap Pleasanton, Kansas
 address
 Nature of Deposit Dry Accessibility Very poor
 Status of Site Open site; not sampled

EXPLORATION DATA

Test Hole	Material at bottom of hole	Depth of over-burden	Depth of Material	Percent Retained					Wash 200	S.F.	L.L.	P.I.
				1/2	3/4	3/8	4	8				

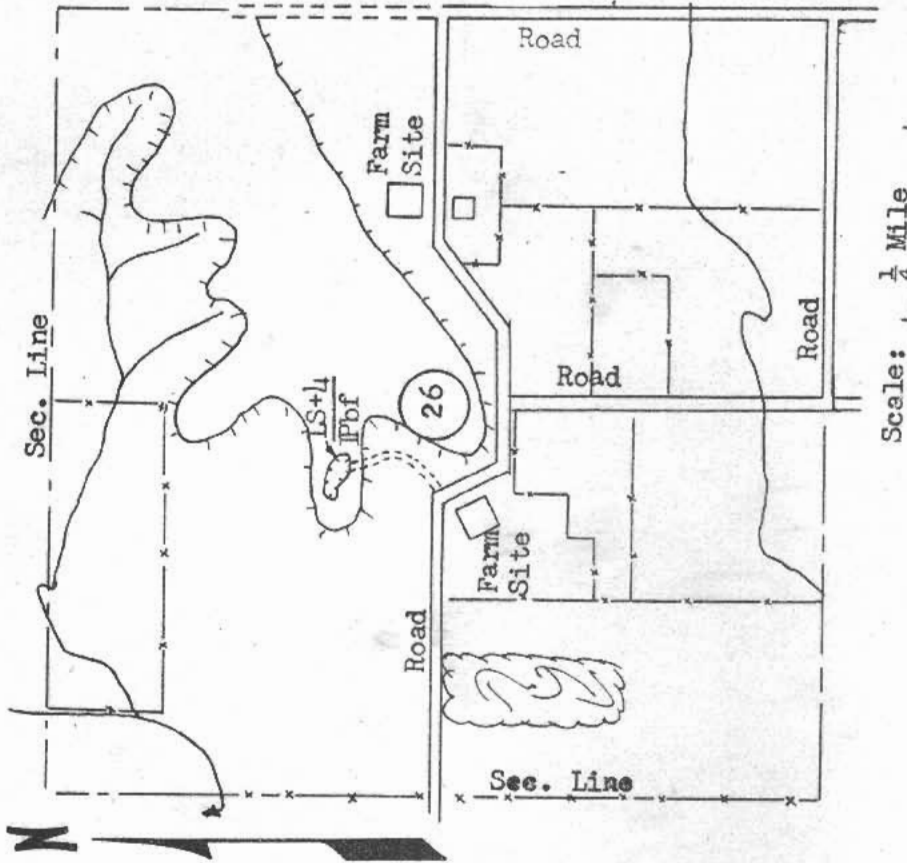
CORRELATION DATA

Geological Age Pennsylvanian
 Geological Source Bethany Falls Limestone Member
 Material Similar to _____
 Specific Gravity (Sat.) _____ (Dry) _____
 Los Angeles Wear _____
 Absorption _____ Soundness _____
 Wt. Cu.Ft. _____ Str. Ratio _____
 Remarks _____



MATERIAL SURVEY REPORT

Site No. LS+4
Pbf
 Date August 1964
 Material Limestone County Linn
 Location SE 1/4, NW 1/4 Sec. 26 Twp. 19S Range 24E
 Owner Olive Maris address LaCygne, Kansas
 Nature of Deposit Dry Accessibility Fair
 Status of Site Open site; not sampled



EXPLORATION DATA

Test hole	Material at bottom of hole	Depth of overburden	Depth of Material	Percent Retained							Wash 200	G.F.	L.L.	P. I.			
				1 1/2	3/4	3/8	4	8	16	30					50	100	

CORRELATION DATA

Geological Age Pennsylvanian
 Geological Source Bethany Falls Limestone Member
 Material Similar To _____
 Specific Gravity (Sat.) _____ (Dry) _____
 Los Angeles Wear _____
 Absorption _____ Soundness _____
 Mt. Cu.Ft. _____ Str. Ratio _____
 Remarks _____

MATERIAL SURVEY REPORT

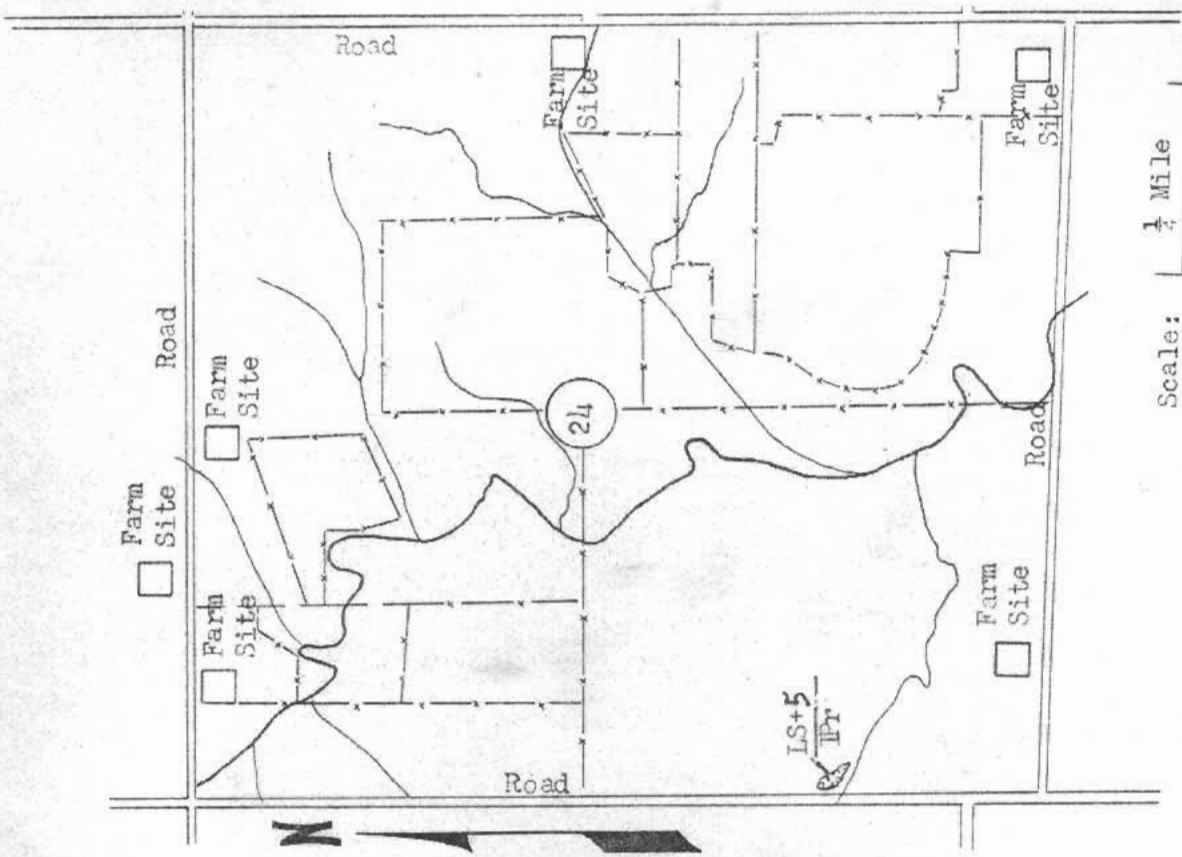
Site No. LS+5
Pr
 Date August 1964
 Material Limestone County Linn
 Location SW 1/4 Sec. 24 Twp. 20S Range 21E
 Owner Harold Polley address Parker, Kansas
 Nature of Deposit Dry Accessibility Good
 Status of Site Open site; not sampled

EXPLORATION DATA

Test Hole	Material at bottom of Hole	Length of over-burden	Depth of Material	Percent Retained							Wash 200	G.F.	L.L.	P.I.					
				1 1/2	3/4	3/8	4	8	16	30					50	100			

CORRELATION DATA

Geological Age Pennsylvanian
 Geological Source Raytown Limestone Member
 Material Similar To _____
 Specific Gravity (Sat.) _____ (Dry) _____
 Los Angeles Wear _____
 Absorption _____ Soundness _____
 Wt. Cu.Ft. _____ Str. Ratio _____
 Remarks _____



MATERIAL SURVEY REPORT

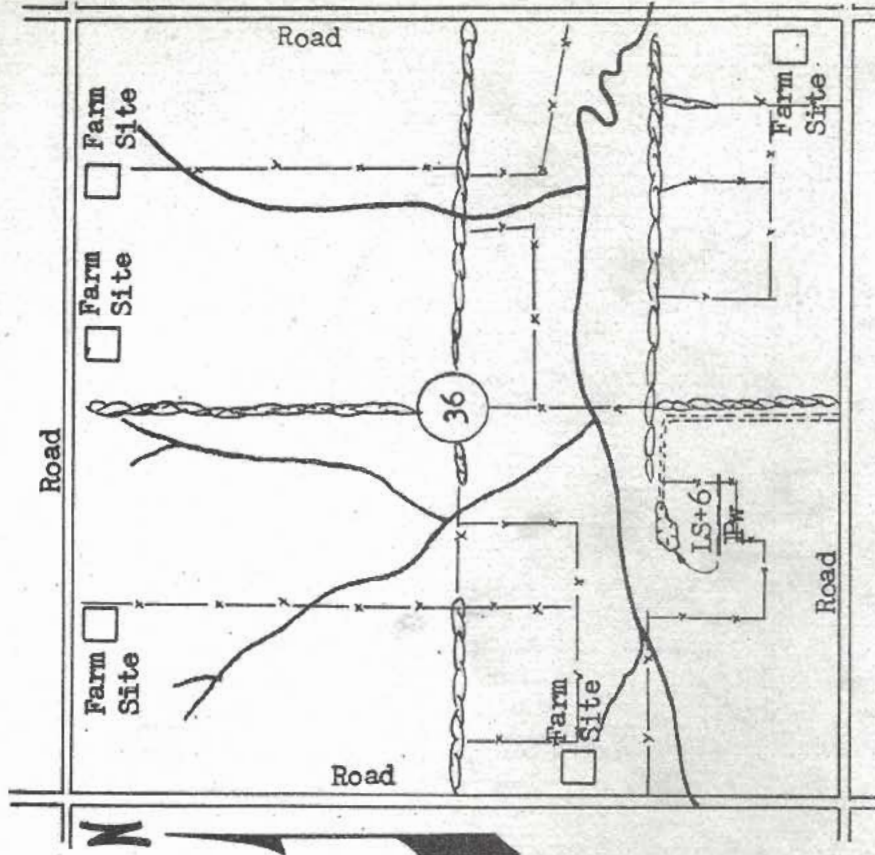
Site No. LS+6 Date August 1964
PW
 Material Limestone County Linn
 Location SE 1/4, SW 1/4 Sec. 36 Twp. 19S Range 22E
 Owner Raymond C. Mitchell Parker, Kansas
 Nature of Deposit Dry Accessibility Good
 Status of Site Open site; not sampled

EXPLORATION DATA

Test Hole	Material at Bottom of Hole	Depth of overburden	Depth of Material	Percent Retained							Wash 200	G.F.	L.L.	P.I.		
				1/2	3/4	3/8	4	8	16	30					50	100

CORRELATION DATA

Geological Age Pennsylvanian
 Geological Source Winterset Limestone Member
 Material Similar to _____
 Specific Gravity (Sat.) _____ (Dry)
 Los Angeles Near _____
 Absorption _____ Soundness _____
 Mt. Cu. Ft. _____ Str. Ratio _____
 Remarks _____



MATERIAL SURVEY REPORT

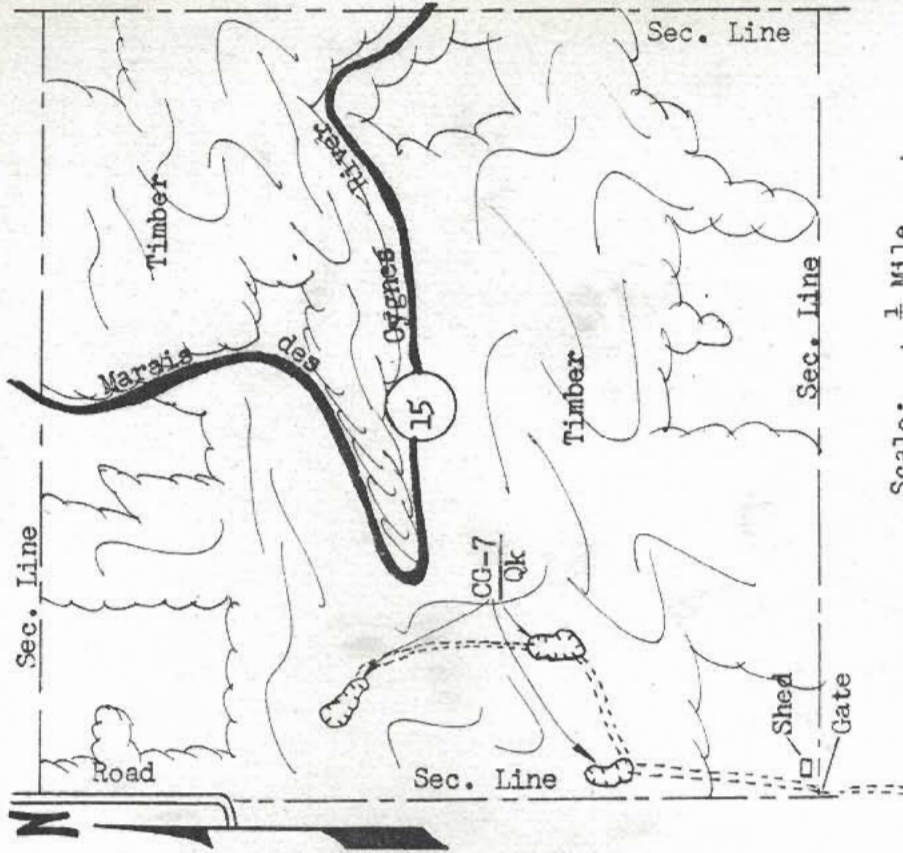
Site No. CG-7 Date August 1964
Qk
 Material Chert Gravel County Linn
 Location W 1/2 Sec. 15 Twp. 21S Range 25E
 Owner Billie Brownback Pleasanton, Kansas
 Nature of Deposit Dry Accessibility Good
 Status of Site Open site; not sampled

EXPLORATION DATA

Test Hole	Material at bottom of Hole	Depth of overburden	Depth of Material	Percent Retained						Wash	G.F.	L.L.	P.I.												
				1/2	3/4	1	2	4	8					16	30	50	100	200							

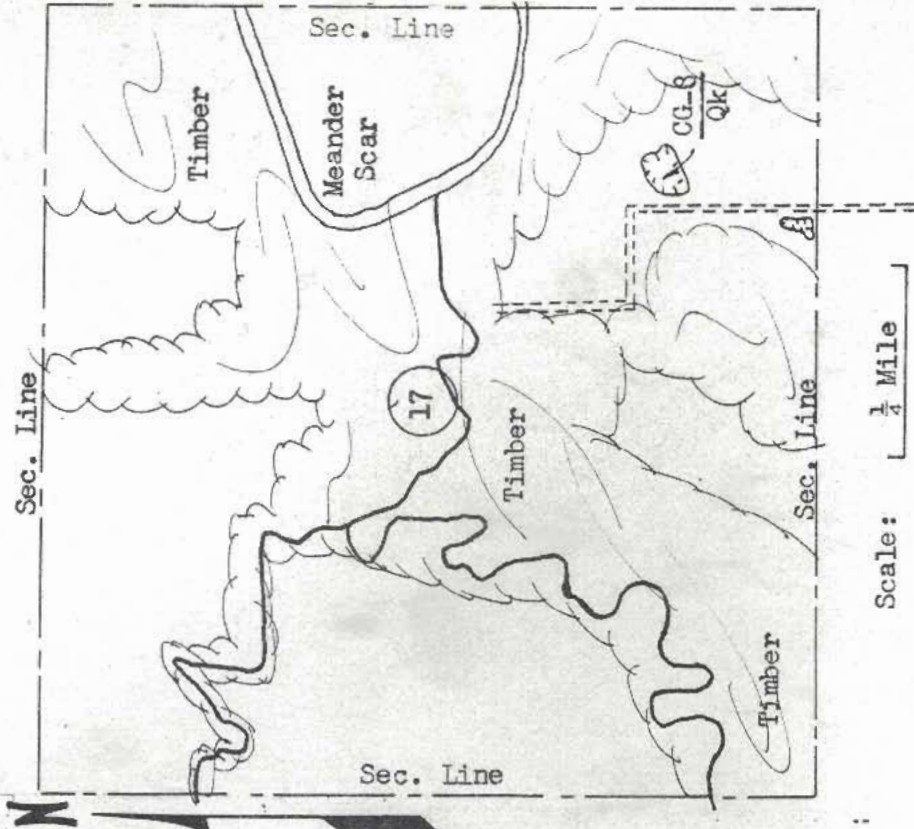
CORRELATION DATA

Geological Age Pleistocene
 Geological Source Kansan Terrace Deposit
 Material Similar To _____
 Specific Gravity (Sat.) _____ (Dry)
 Los Angeles Wear _____
 Absorption _____ Soundness _____
 Mt. Cu. Ft. _____ Str. Ratio _____
 Remarks _____



MATERIAL SURVEY REPORT

Site No. CG-8
OK
 Date August 1964
 Material Chert Gravel County Linn
 Location SE 1/4, SE 1/4 Sec. 17 Twp. 21S Range 25E
 Owner State of Kansas (Game Refuge)
 Nature of Deposit Dry Accessibility Good
 Status of Site Open site; not sampled



EXPLORATION DATA

Test Hole	Material at bottom of hole	Depth of overburden	Depth of Material	Percent Retained							Wash 200	G.F.	L.L.	P.I.			
				1 1/2	3/4	3/8	4	8	16	30					50	100	

CORRELATION DATA

Geological Age Pleistocene
 Geological Source Kansan Terrace Deposit
 Material Similar To _____
 Specific Gravity (Sat.) _____ (Dry)
 Los Angeles Wear _____
 Absorption _____ Soundness _____
 Wt. Cu.ft. _____ Str. Ratio _____
 Remarks _____

MATERIAL SURVEY REPORT

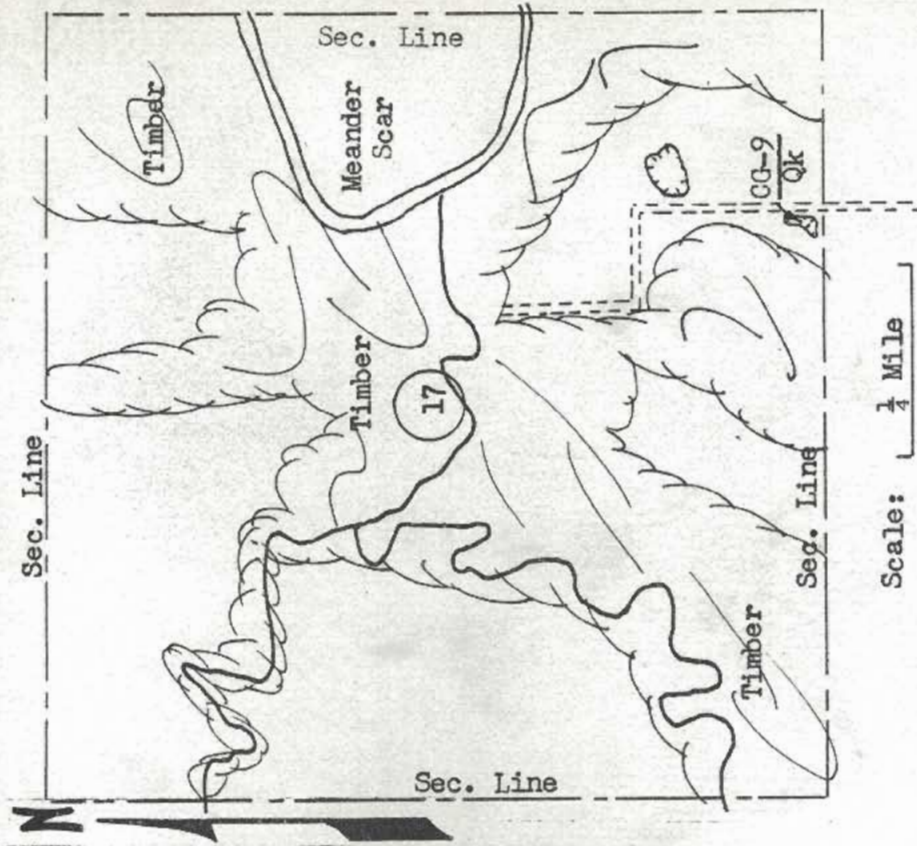
Site No. CG-9
Ok Date August 1964
 Material Chert Gravel County Linn
 Location SW 1/4, SE 1/4 Sec. 17 Twp. 21S Range 25E
 Owner State of Kansas (Game Refuge)
 Nature of Deposit Dry Accessibility Good
 Status of Site Open site; not sampled

EXPLORATION DATA

Test hole	Material at bottom of hole	Depth of over-burden	Depth of Material	Percent Retained						Wash 200	G.F.	L.L.	P. I.	
				1 1/2	3/4	3/8	4	8	16					30

CORRELATION DATA

Geological Age Pleistocene
 Geological Source Kansan Terrace Deposit
 Material Similar To _____
 Specific Gravity (Sat.) _____ (Dry)
 Los Angeles Wear _____
 Absorption _____ Soundness _____
 Wt. Cu.Ft. _____ Str. Ratio _____
 Remarks _____



MATERIAL SURVEY REPORT

CG-10
Qk

Site No. _____ Date August 1964

Material Chert Gravel County Linn

Location NW 1/4 Sec. 20 Twp. 21S Range 25E

Owner Fern Fisher Pleasanton, Kansas
address

Nature of Deposit Dry Accessibility Good

Status of Site Open site; not sampled

EXPLORATION DATA

Test Hole	Material at Bottom of Hole	Depth of over-burden	Depth of Material	Percent Retained					Wash 200	G. F.	L.L.	P. I.
				1/2	3/4	1	2	4				

CORRELATION DATA

Geological Age Pleistocene

Geological Source Kansan Terrace Deposit

Material Similar To _____

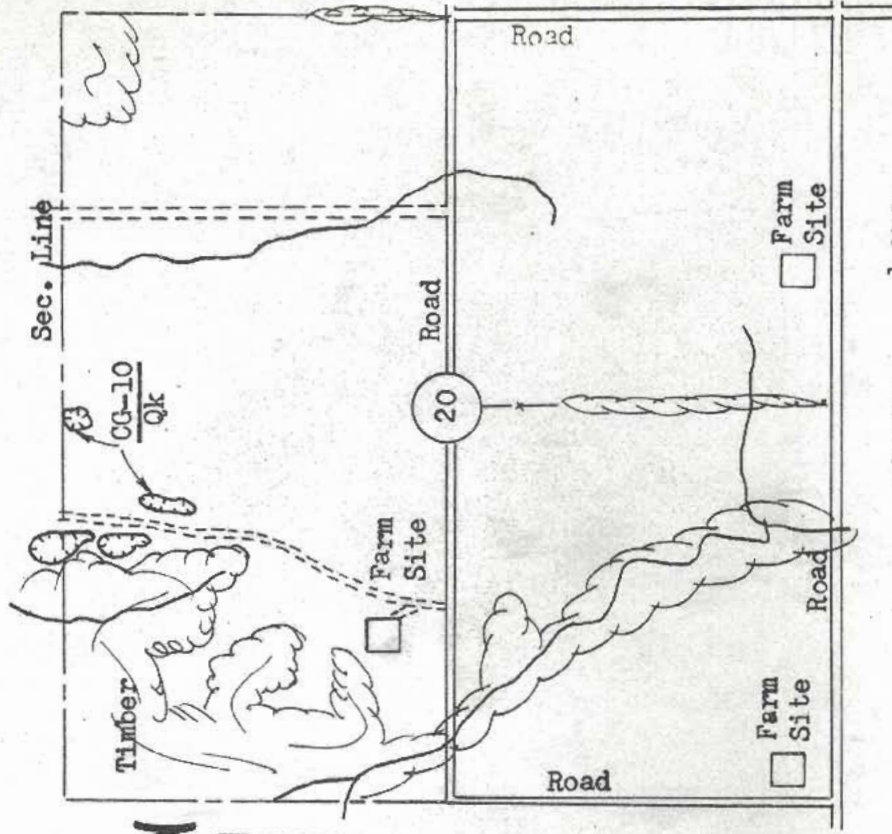
Specific Gravity (Sat.) _____ (Dry) _____

Los Angeles Wear _____

Absorption _____ Soundness _____

Wt. Cu. Ft. _____ Str. Ratio _____

Remarks _____

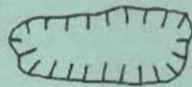


Scale: $\frac{1}{4}$ Mile

APPENDIX II

The following site data forms are designated as "open sites; sampled." The sites described herein are depicted on the county materials map as a " ● ".

LEGEND



This symbol on the site data form represents an open site.

MATERIAL SURVEY REPORT

Site No. LS+11
PI
 Material Limestone
 Location SW 1/4, SW 1/4 Sec. 11 Twp. 23S Range 25E
 Precinct Prescott, Kansas
 Owner Edith Fay Miller
 Nature of Deposit Dry Accessibility Good
 Status of Site Open site; sampled

EXPLORATION DATA

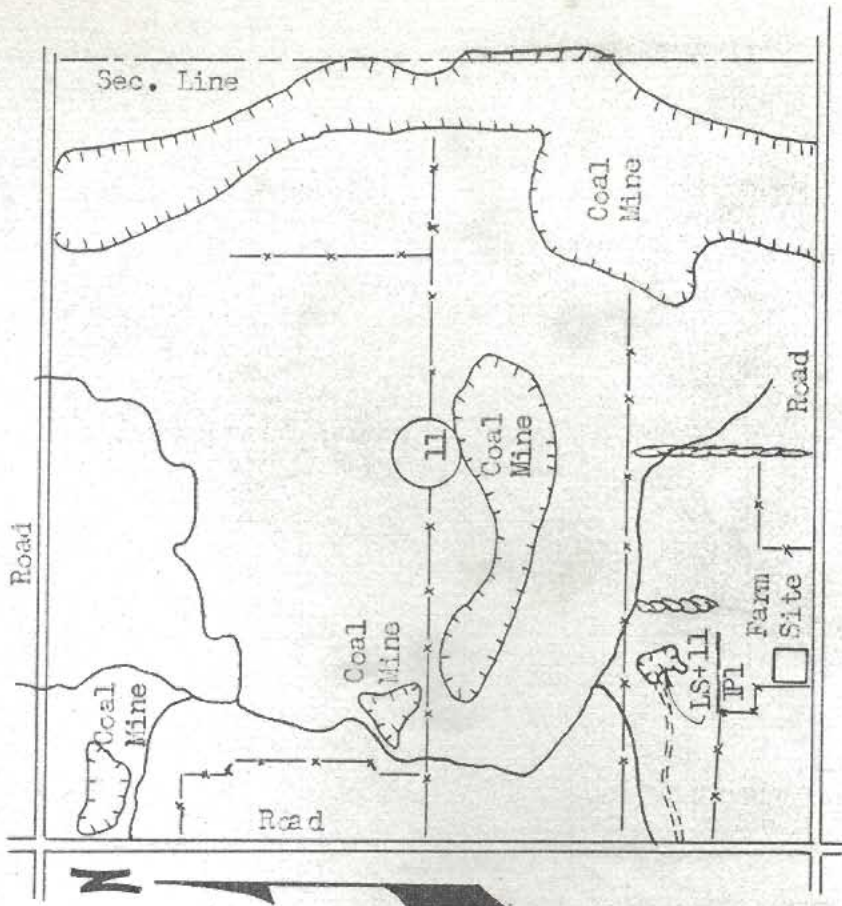
Test Hole	Material at Bottom of Hole	Depth of overburden	Depth of Material	Percent Retained							Mash 200	G.F.	L.L.	P.I.			
				1 1/2	3/4	3/8	4	8	16	30					50	100	

CORRELATION DATA

Geological Age Pennsylvanian
 Geological Source Laberdie Limestone Member
 Material Similar To material reported on S.H.C. Form 619, No. 54-22.

Specific Gravity (Sat.) 2.53, 2.53, 2.54, 2.54 (dry), 2.46, 2.45, 2.46, 2.46, 2.46
 Los Angeles Wear (Grading B) 35.0%, 35.6%, 34.7%, 33.1%
 Absorption 2.85%, 3.26%, 3.04%, 2.96% Soundness 0.98, 0.99, 0.97, 0.98

Wt. Cu.ft. _____ Str. Ratio _____
 Remarks _____



Scale: 1/4 Mile

MATERIAL SURVEY REPORT

Site No. LS+12 Date August 1964
Pbf
 Material Limestone County Linn
 Location NE 1/4, NE 1/4 Sec. 25 Twp. 22S Range 24E
 Owner O. D. Mayhugh address Prescott, Kansas
 Nature of Deposit Dry Accessibility Good
 Status of Site Open site; sampled

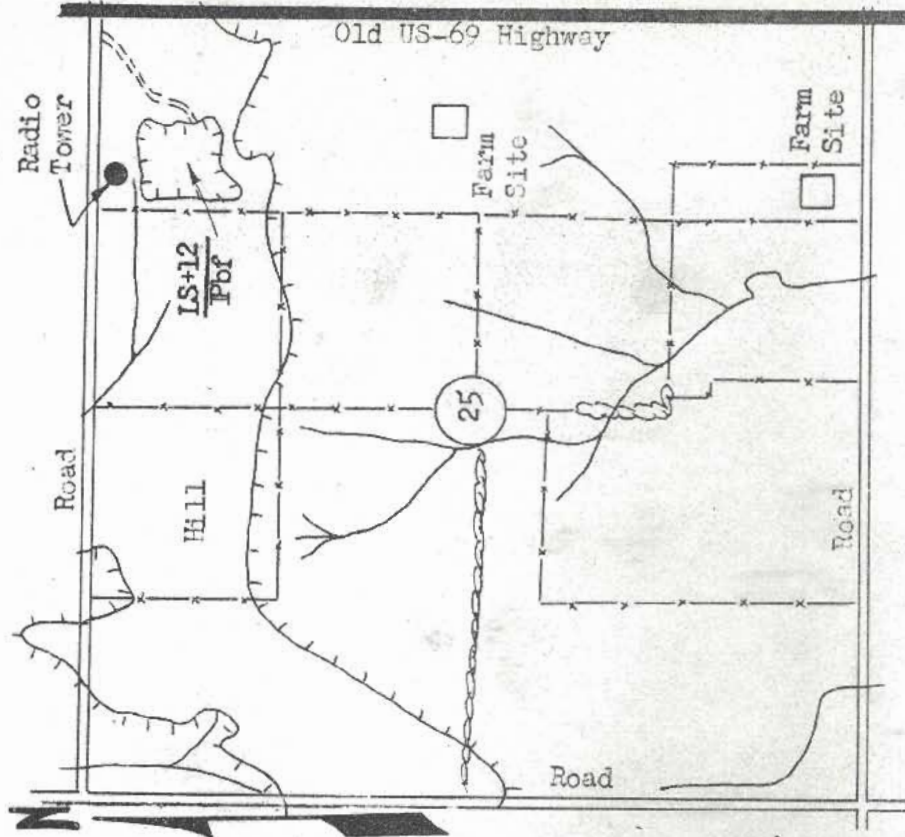
EXPLORATION DATA

Test Hole	Material at Bottom of Hole	Depth of over-burden	Depth of Material	Percent Retained							Wash 200	G.F.	L.L.	P.I.				
				1/2	3/4	3/8	4	8	16	30					50	100		

CORRELATION DATA

Geological Age Pennsylvanian
 Geological Source Bethany Falls Limestone Member
 Material Similar To material reported on S.H.C. Form 619, No.54-21.

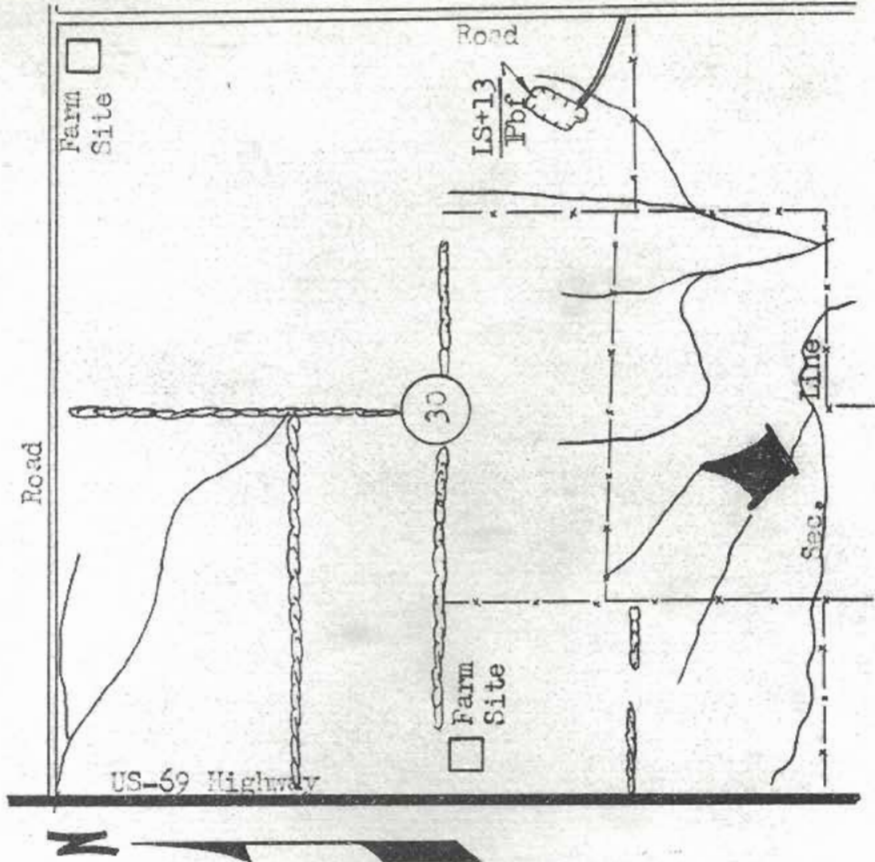
Specific Gravity (Sat.) 2.58, 2.55 (dry) 2.53, 2.49
 Los Angeles Wear (Grading B) 35.7%
 Absorption 2.04%, 2.16% Soundness - 0.99
 Wt. Cu.Ft. _____ Str. Ratio _____
 Remarks _____



STATE HIGHWAY COMMISSION OF KANSAS

MATERIAL SURVEY REPORT

Site No. LS+13 Date August 1964
Pbf
 Material Limestone County Linn
 Location NE 1/4, SE 1/4 Sec. 30 Twp. 19S Range 25E
 Owner Wm. E. Wolfe, et al LaCygne, Kansas
 Nature of Deposit Dry Accessibility Good
 Status of Site Open site; sampled



Scale: 1/4 Mile

EXPLORATION DATA

Test Hole	Material at Bottom of Hole	Depth of overburden	Depth of Material	Percent Retained					Wash 200	G.F.	L.L.	P.I.
				1 1/2	3/4	3/8	4	8				

CORRELATION DATA

Geological Age Pennsylvanian
 Geological Source Bethany Falls Limestone Member
 Material Similar to material reported on S.H.C. Form 619, No.54-20.

Specific Gravity (Sat.) 2.62 (Dry) 2.58
 Los Angeles Wear 26.1%
 Absorption 1.68% Soundness 0.99
 Mt. Cu.Ft. _____ Str. Ratio _____
 REMARKS _____

MATERIAL SURVEY REPORT

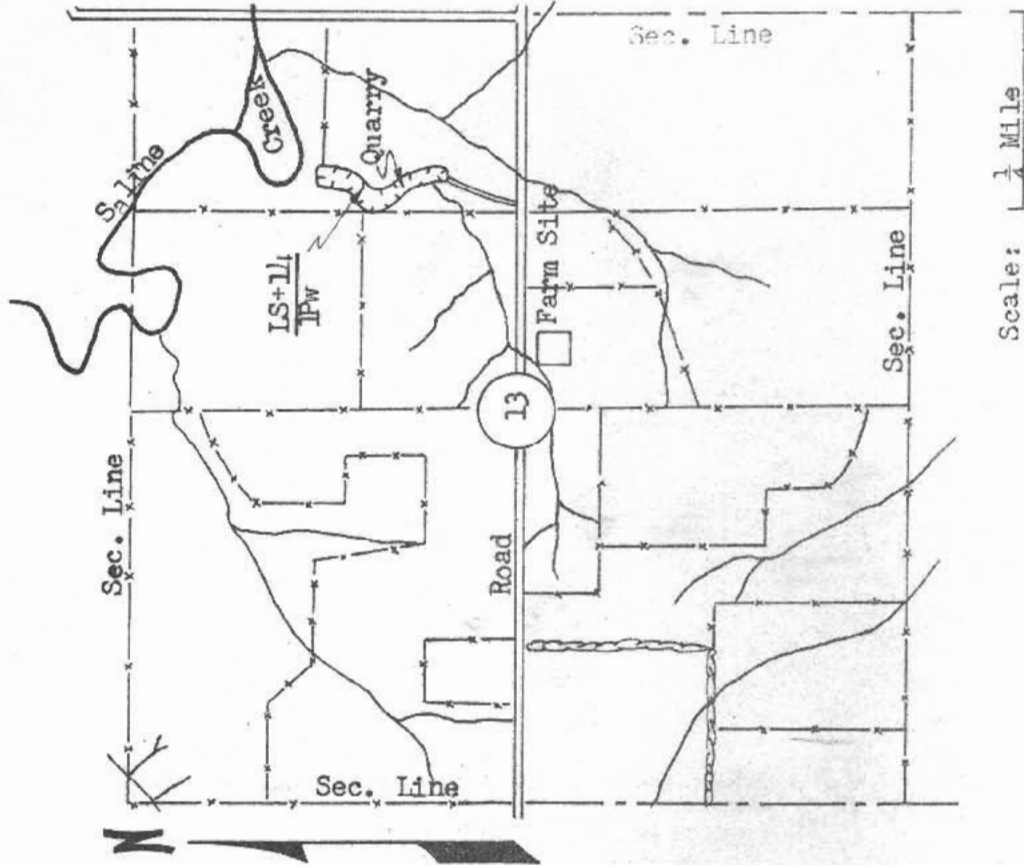
Site No. LS+14
PW Date August 1964
 Material Limestone County Linn
 Location SE 1/4, NE 1/4 Sec. 13 Twp. 21S Range 21E
 Owner Hayden Good, et al Pleasanton, Kansas
 name address
 Nature of Deposit Dry Accessibility Good
 Status of Site Open site; sampled

EXPLORATION DATA

Test Hole	Material at Bottom of Hole	Depth of over-burden	Depth of Material	Percent Retained							Wash 200	G.F.	L.L.	P.I.			
				1/2	3/4	3/8	4	8	16	30					50	100	

CORRELATION DATA

Geological Age Pennsylvanian
 Geological Source Winterset Limestone Member
 Material Similar to material reported on SHC Form 619, No. 54-19.
 Specific Gravity (Snt.) 2.55 (0.7) 2.46
 Los Angeles Wear (Grading B) 26.0%
 Absorption 3.59% Soundness 0.98
 Wt. Cu.Ft. _____ Str. Ratio _____
 Remarks _____



MATERIAL SURVEY REPORT

Site No. LS+16
Pbf
 Date August 1964
 Material Limestone County Linn
 Location SW 1/4, NW 1/4 Sec. 19 Twp. 22S Range 24E
 Owner Robt. W. Weese address Mound City, Kansas
 Nature of Deposit Dry Accessibility Good
 Status of Site Open site; sampled

EXPLORATION DATA

Test Hole	Material at Bottom of Hole	Depth of over-Burden	Depth of Material	Percent Retained							Wash 200	G.F.	L.L.	P.I.				
				1 1/2	3/4	3/8	4	8	16	30					50	100		

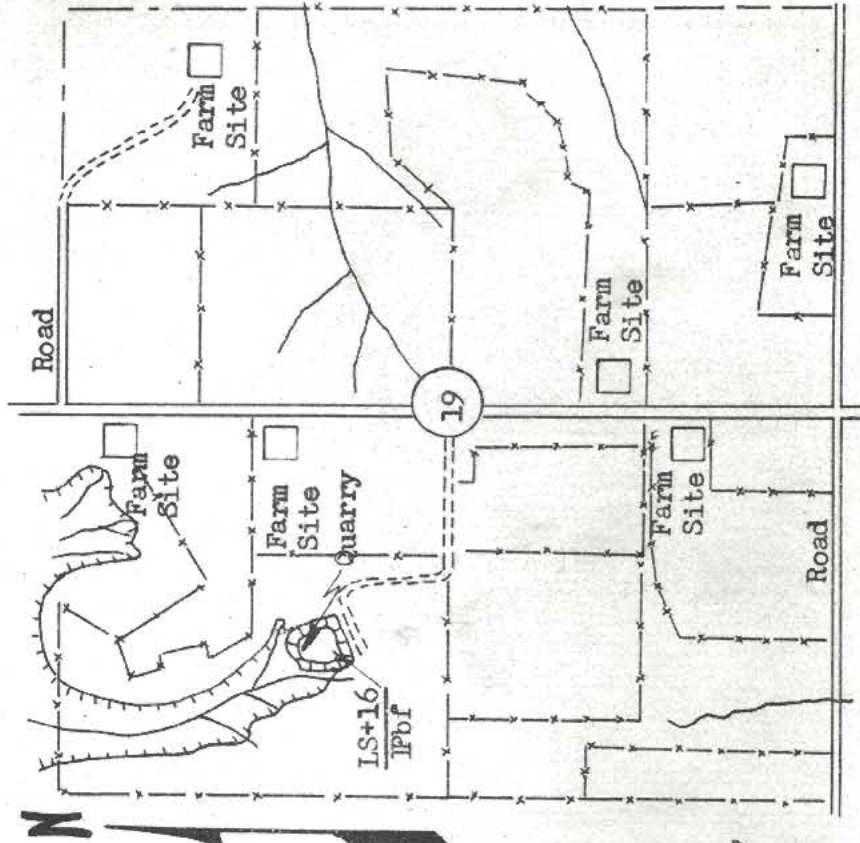
CORRELATION DATA

Geological Age Pennsylvanian
 Geological Source Bethany Falls Limestone Member
 Material Similar To material reported on S.H.C. Form 619, No. 54-17

Specific Gravity (Sat.) 2.51, 2.54, 2.52 (dry) 2.44, 2.47, 2.45
 Los Angeles Near (Grading B) 30.6%, 32.0%, 33.7%
 Absorption 2.66%, 2.78%, 3.04% Soundness 0.97, 0.94, 0.97

Wt. Cu.Ft. _____ Str. Ratio _____

Remarks _____



Scale 1/4 Mile

MATERIAL SURVEY REPORT

Site No. LS+17
PW
 Date August 1964
 Material Limestone
 County Linn
 Location SW 1/4, SE 1/4 Sec. 28 Twp. 20S Range 22E
 Owner Guy T. Kinder address Parker, Kansas
 Nature of Deposit Dry Accessibility Good
 Status of Site Open site; sampled

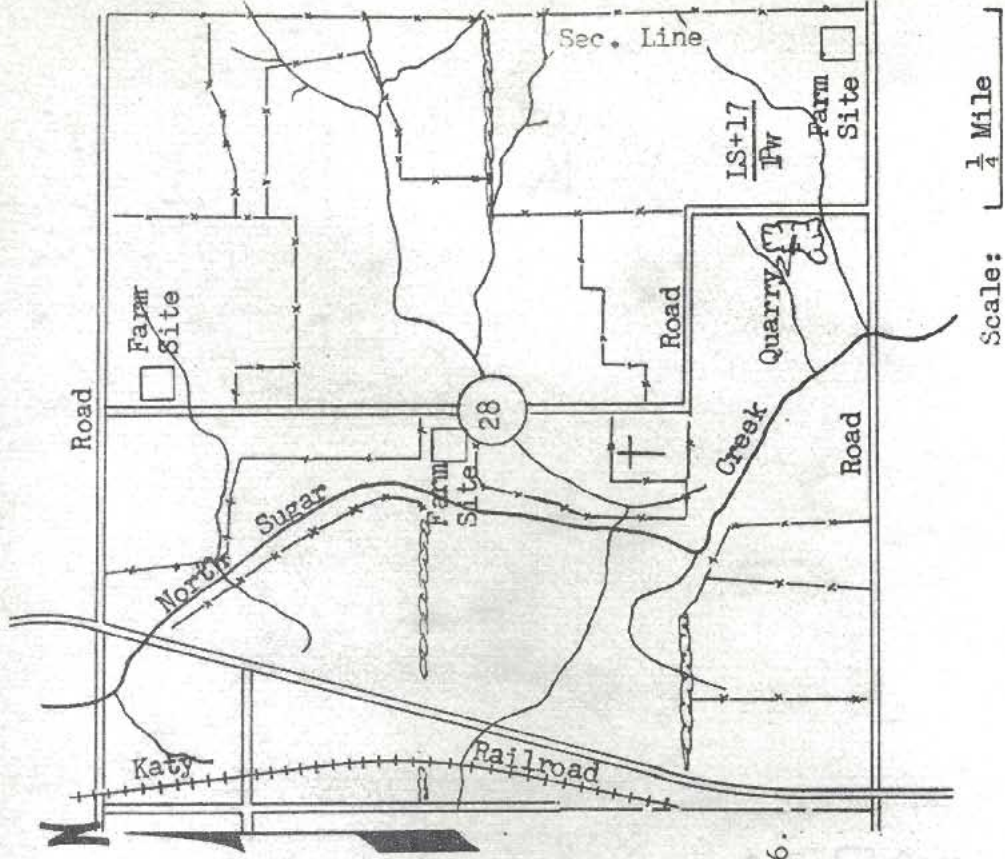
EXPLORATION DATA

Test Hole	Material bottom of hole	Depth of over-burden	Depth of Material	Percent Retained							Wash 200	S.F.	L.L.	P.I.			
				1 1/2	3/4	3/8	3/16	3/32	1/16	1/32							

CORRELATION DATA

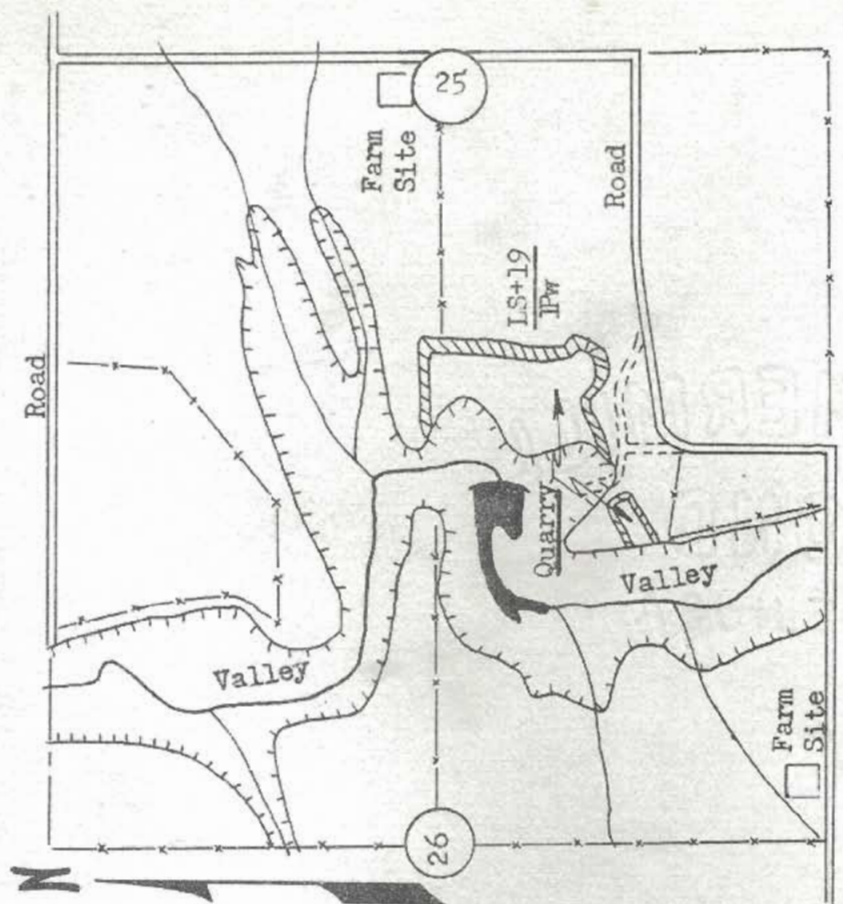
Geological Age Pennsylvanian
 Geological Source Winter set Limestone Member
 Material Similar To material reported on S.H.C. Form 619, No. 54-16.

Specific Gravity (Sat.) 2.54 (Dry) 2.46
 Los Angeles Wear (Grading B) 39.7%
 Absorption 3.31% Soundness 0.97
 Mt. Cu.Ft. _____ Str. Ratio _____
 Remarks _____



MATERIAL SURVEY REPORT

Site No. LS+19
IPW
 Date August 1964
 Material Limestone County Linn
 Location NW 1/4, SW 1/4 Sec. 25 Twp. 21S Range 22E
 Owner Charles Murray Pleasanton, Kansas
 Nature of Deposit Dry Accessibility Good
 Status of Site Open site; sampled



Scale: 1/4 Mile

EXPLORATION DATA

Test Hole	Material at Bottom of Hole	Depth of over-burden	Depth of Material	Percent Retained					Wash 200	G.F.	L.L.	P.I.
				1/2	3/4	3/8	4	8				

CORRELATION DATA

Geological Age Pennsylvanian
 Geological Source Winter set Limestone Member
 Material Similar To material reported on S.H.C. Form 619, No. 54-13.

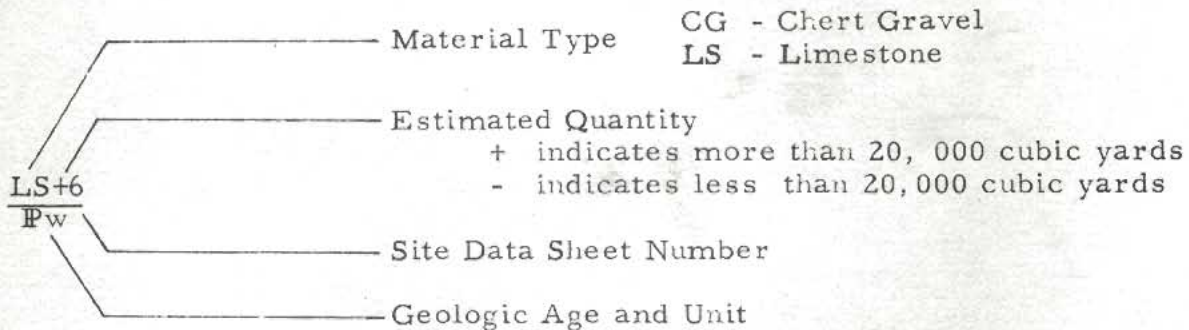
Specific Gravity (Sat.) 2.53, 2.53, 2.54, 2.54 (Dry) 2.46, 2.45, 2.46, 2.46
 Los Angeles Wear (Grading B) 35.0%, 35.6%, 34.7%, 33.1%
 Absorption 2.85%, 3.26%, 3.04%, Soundness 0.98, 0.99, 0.97, 0.98

Wt. Cu-ft. _____ Str. Ratio _____
 Remarks _____

LINN COUNTY MATERIALS MAP LEGEND

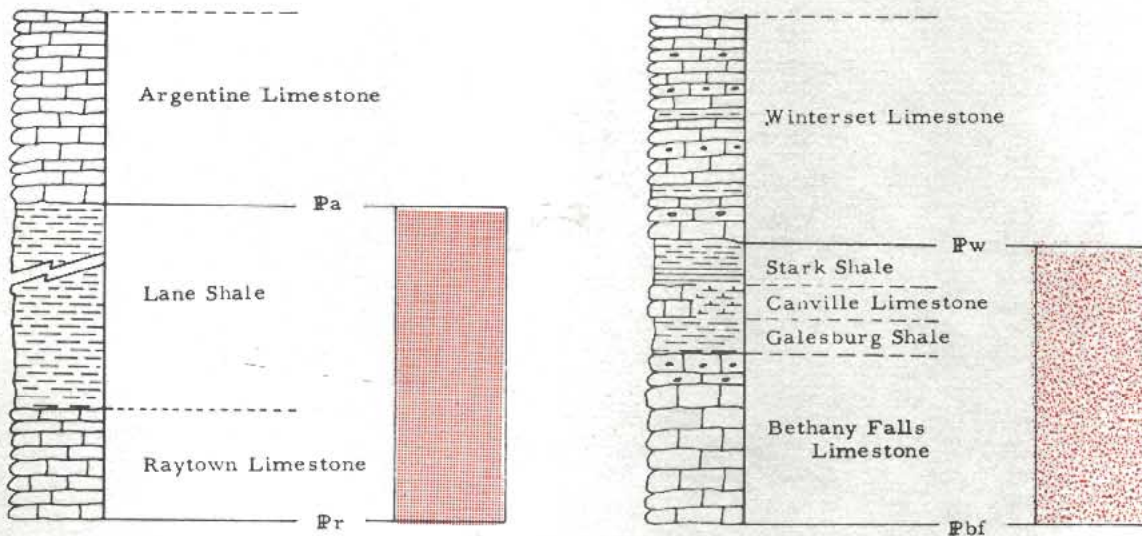
EXPLANATION OF MATERIALS SITE DESIGNATIONS

- Open site; not sampled (Appendix I)
- Open site; sampled (Appendix II)



EXPLANATION OF MAP SYMBOLS

Illinoian, Wisconsinan, and
Recent Terrace Deposits



MIAMI

R 21 E
R 22 E

R 22 E
R 23 E

COUNTY

TO OSAWATOMIE

COUNTY

ANDERSON

T 19 S
T 20 S

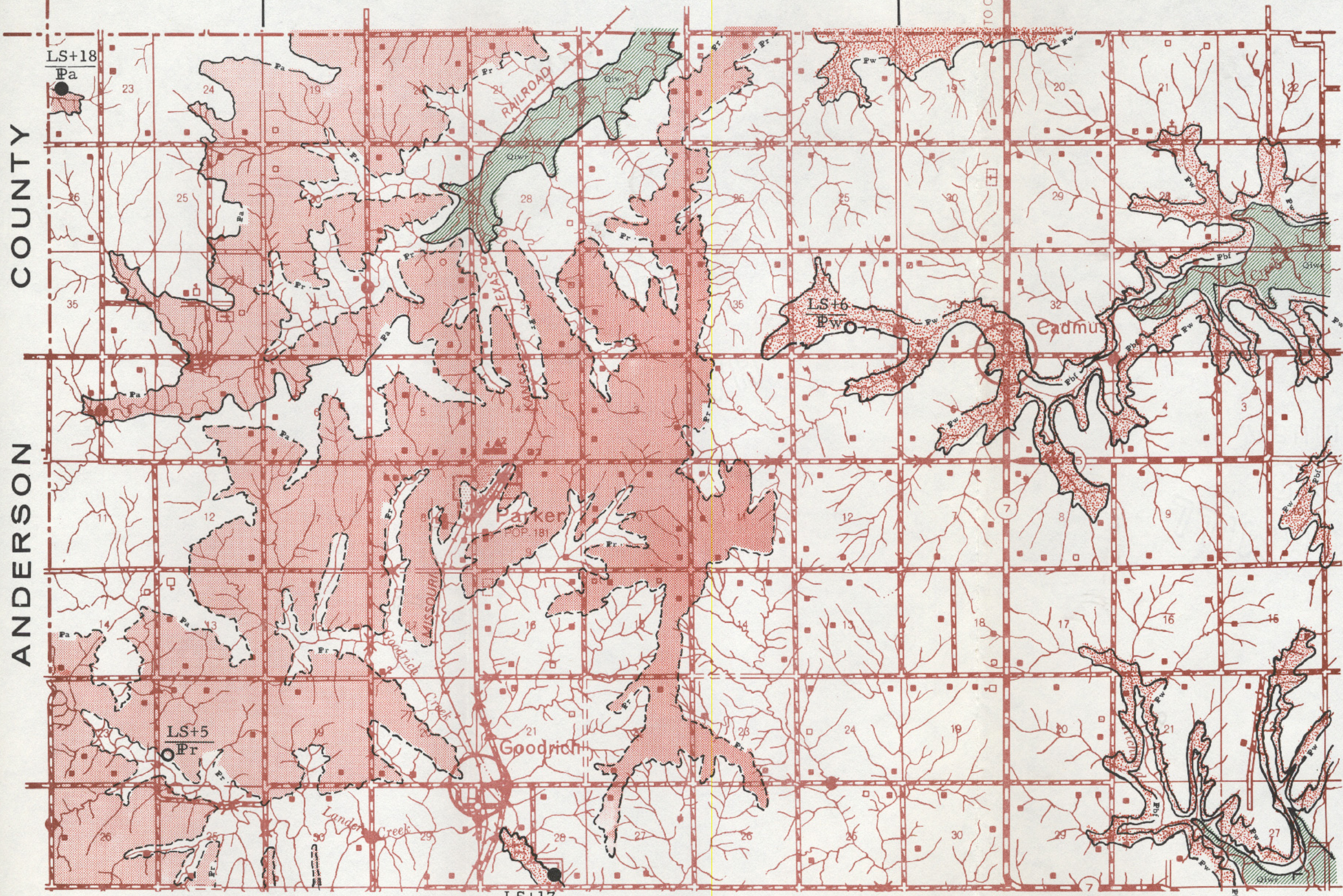
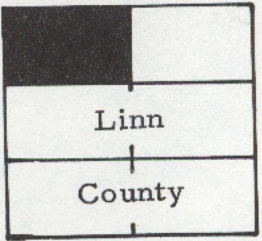


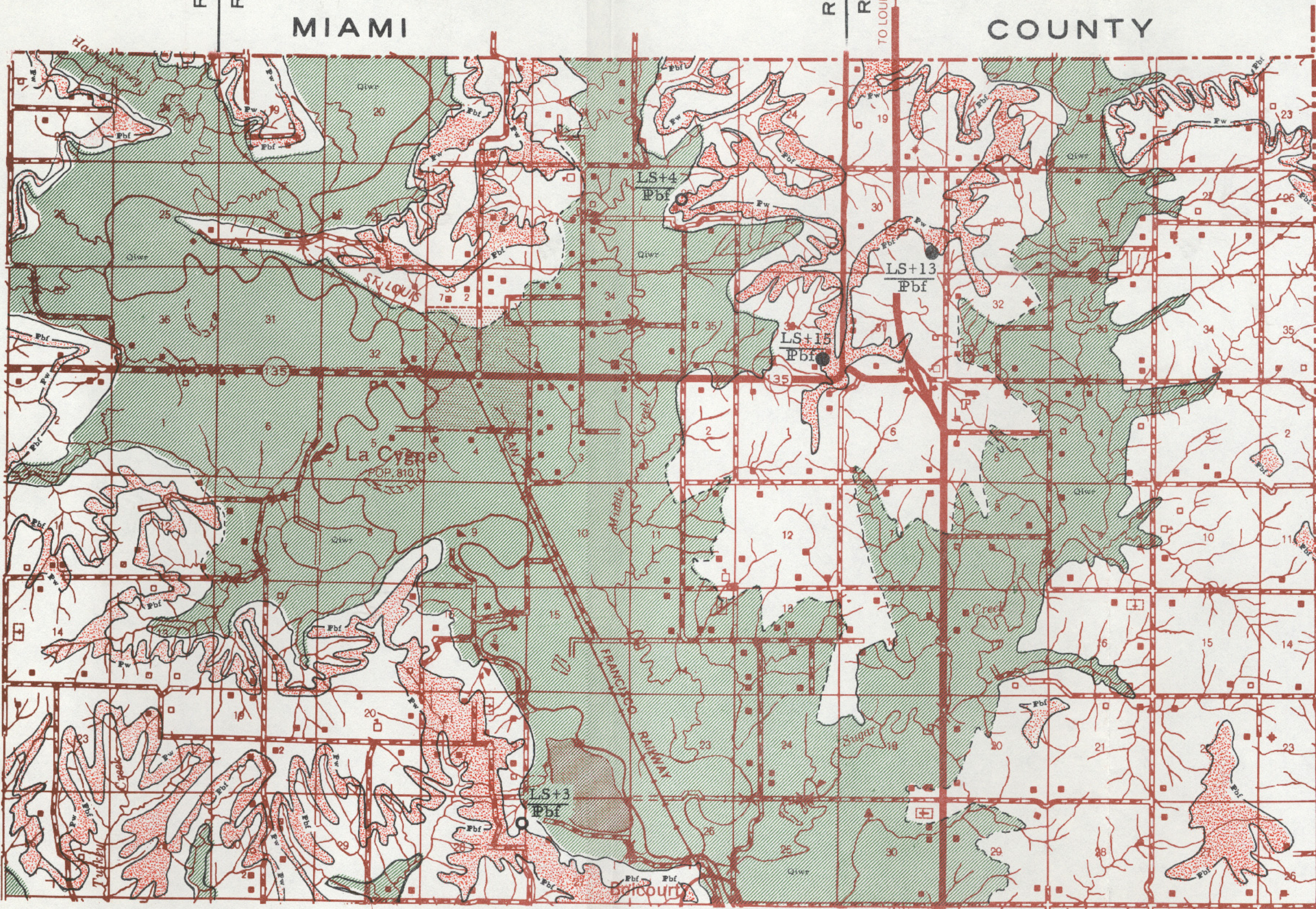
PLATE I

R 23 E
R 24 E

MIAMI

R 24 E
R 25 E
TO LOUISBURG

COUNTY



COUNTY

T 19 S
T 20 S

BATES

MISSOURI

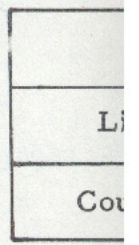
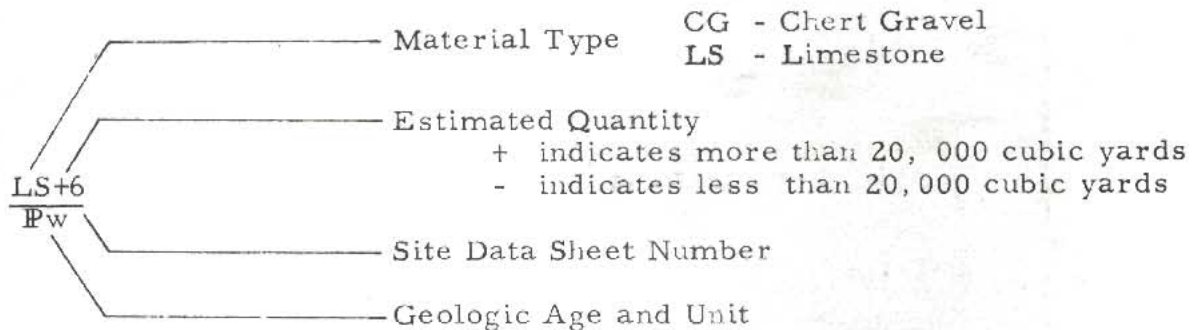


PLATE II

LINN COUNTY MATERIALS MAP LEGEND

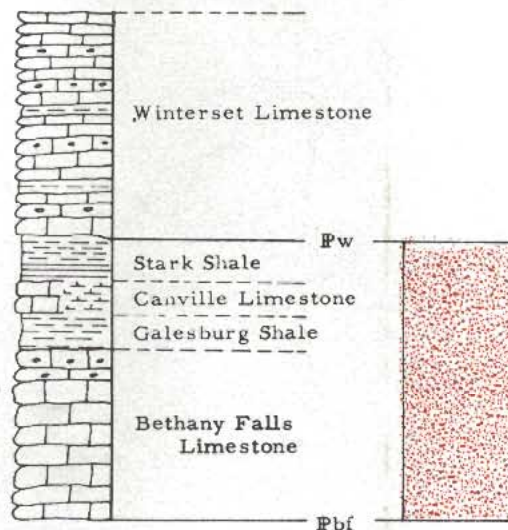
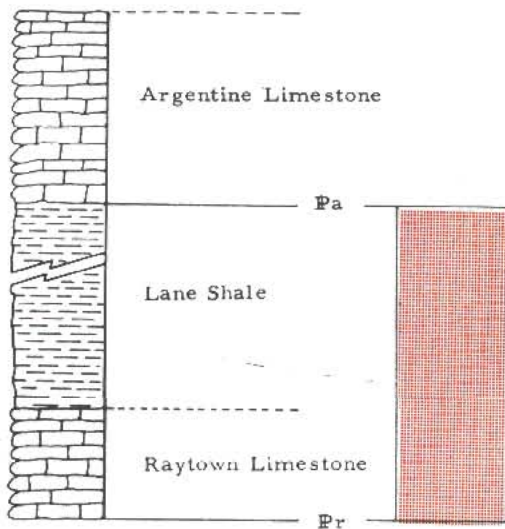
EXPLANATION OF MATERIALS SITE DESIGNATIONS

- Open site; not sampled (Appendix I)
- Open site; sampled (Appendix II)



EXPLANATION OF MAP SYMBOLS

Illinoian, Wisconsinan, and Recent Terrace Deposits



COUNTY

ANDERSON

R 21 E
R 22 E

R 22 E
R 23 E

T 20 S
T 21 S

T 21 S
T 22 S

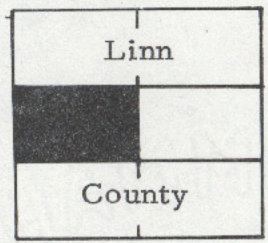
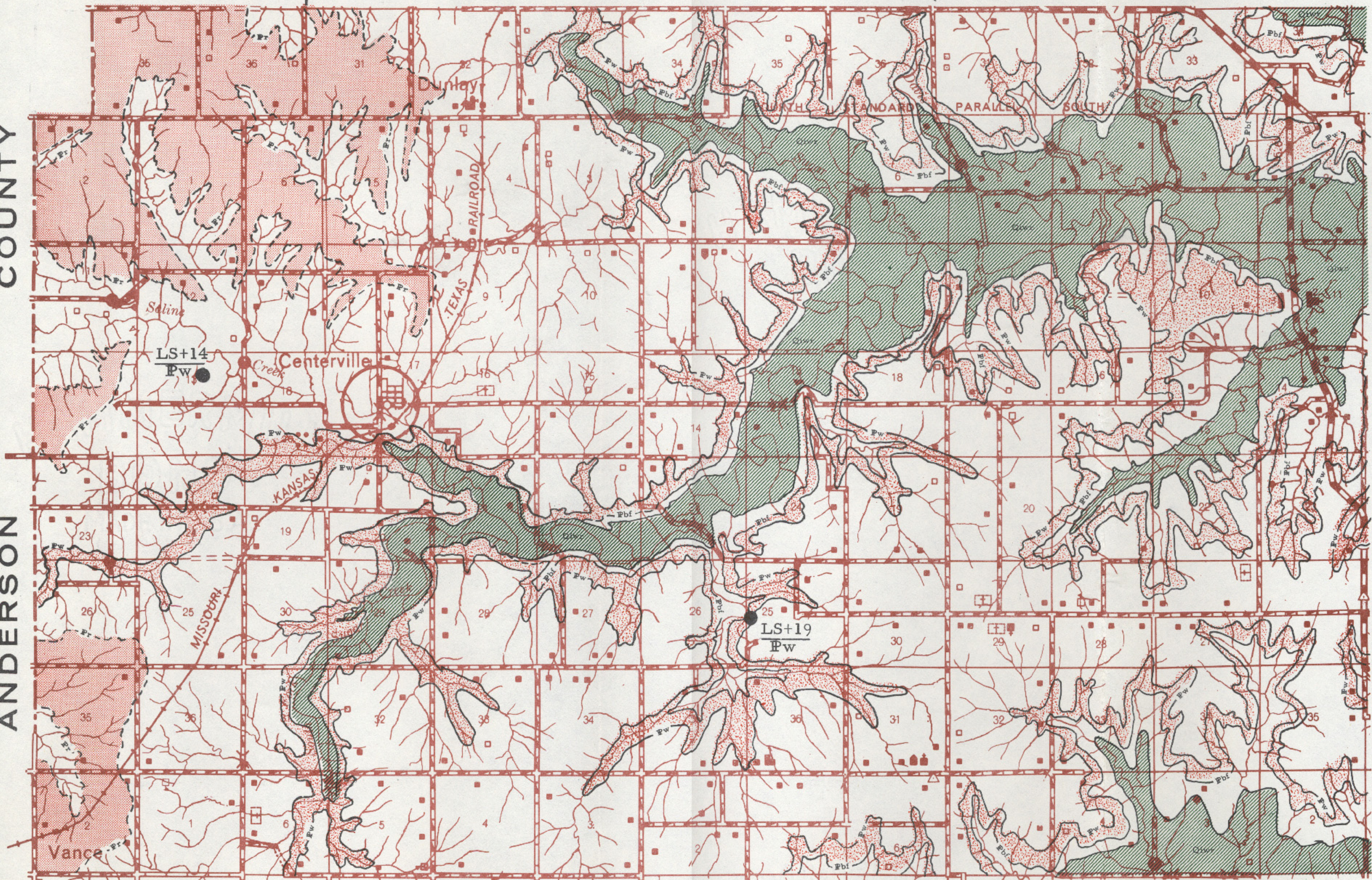
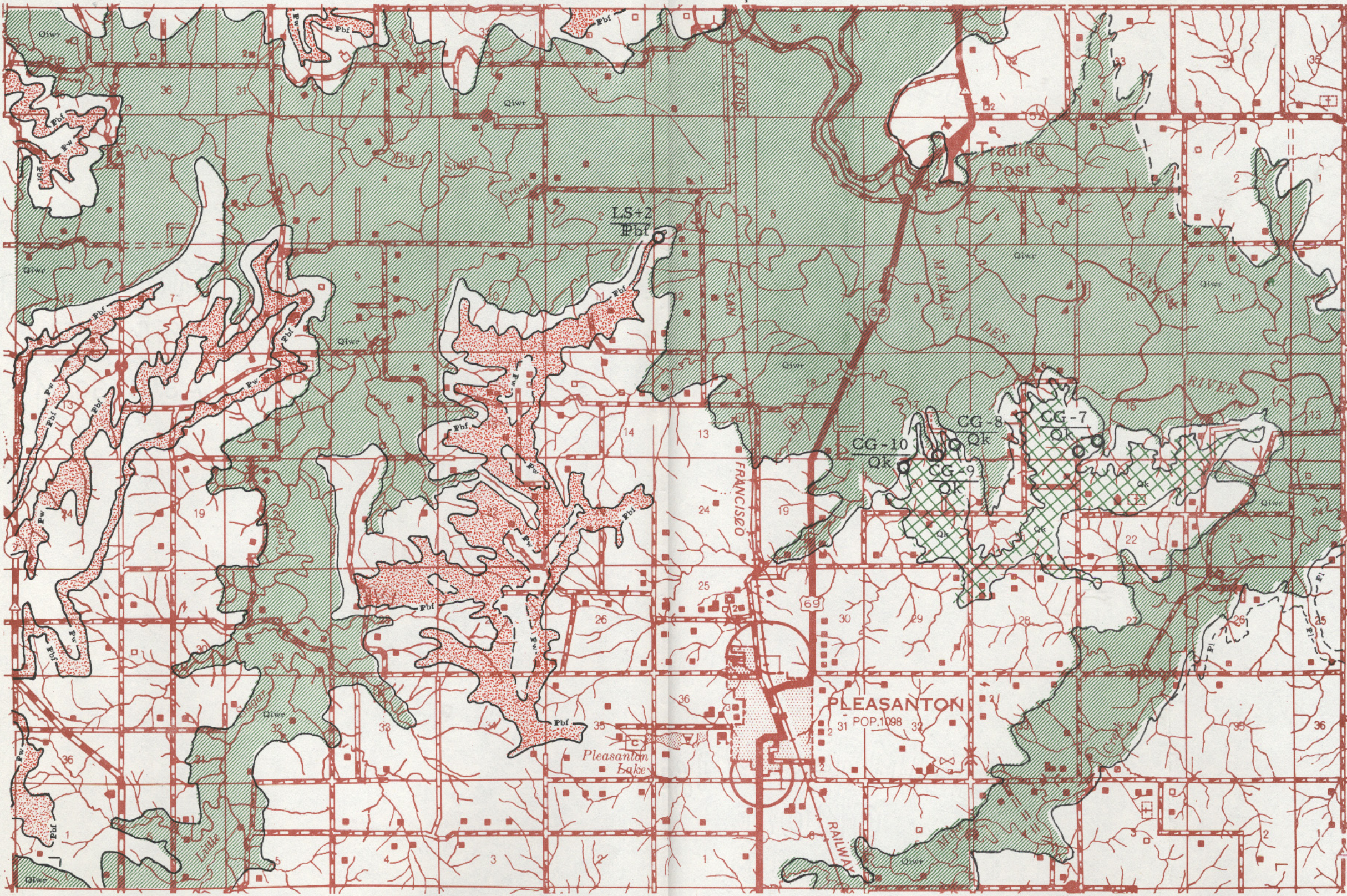


PLATE III

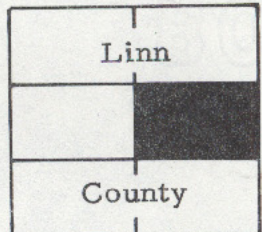
R 23 E
R 24 E

R 24 E
R 25 E



T 20 S
TO BUTLER MO.
T 21 S

MISSOURI



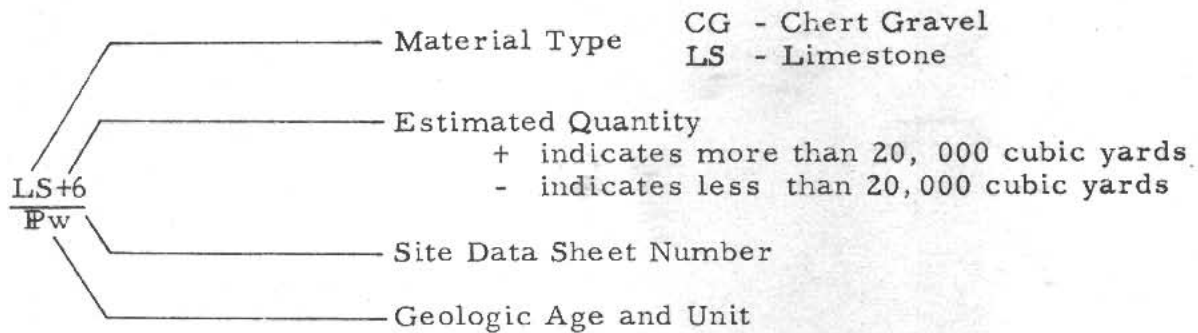
T 21 S
T 22 S

PLATE IV

LINN COUNTY MATERIALS MAP LEGEND

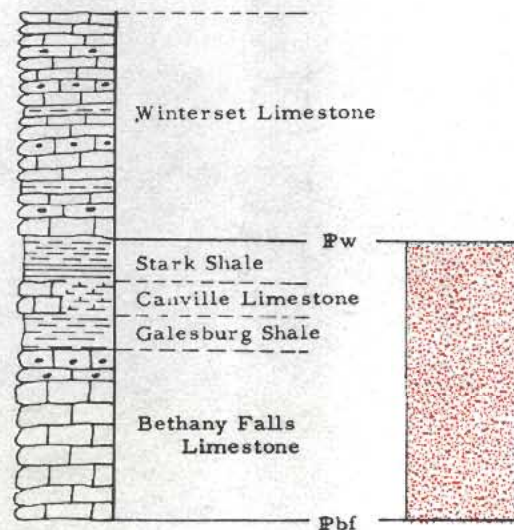
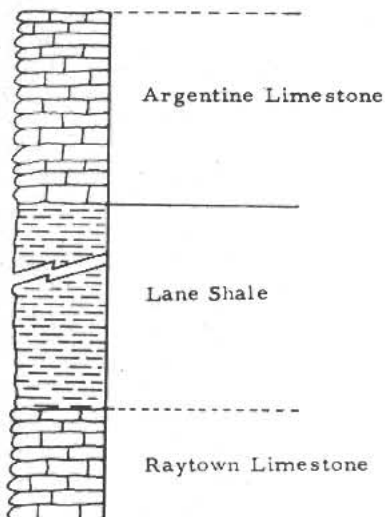
EXPLANATION OF MATERIALS SITE DESIGNATIONS

- Open site; not sampled (Appendix I)
- Open site; sampled (Appendix II)



EXPLANATION OF MAP SYMBOLS

Illinoian, Wisconsinan, and Recent Terrace Deposits

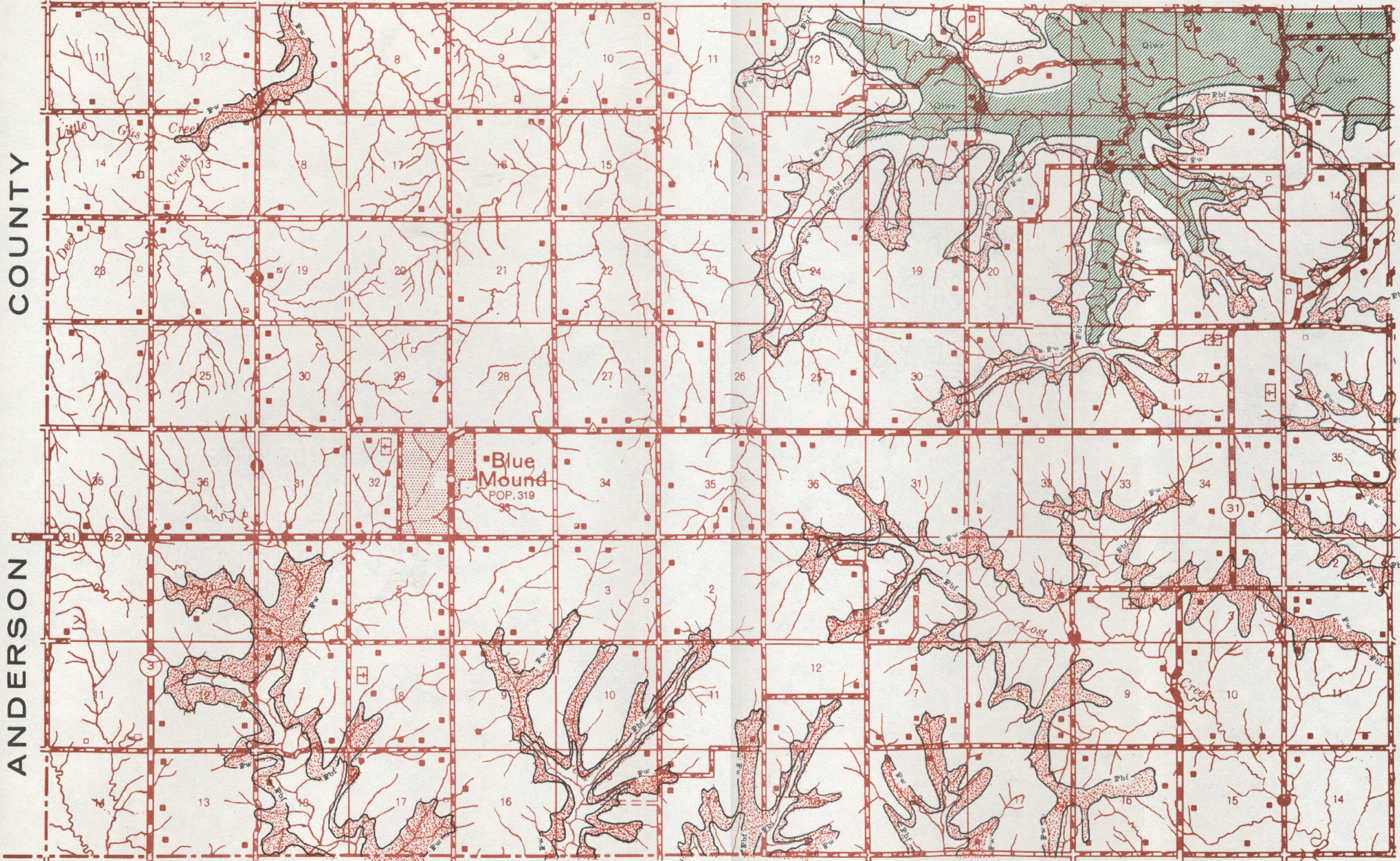


COUNTY

ANDERSON

R 21 E
R 22 E

R 22 E
R 23 E



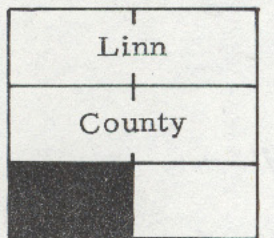
BOURBON

COUNTY

PLATE V

T 22 S

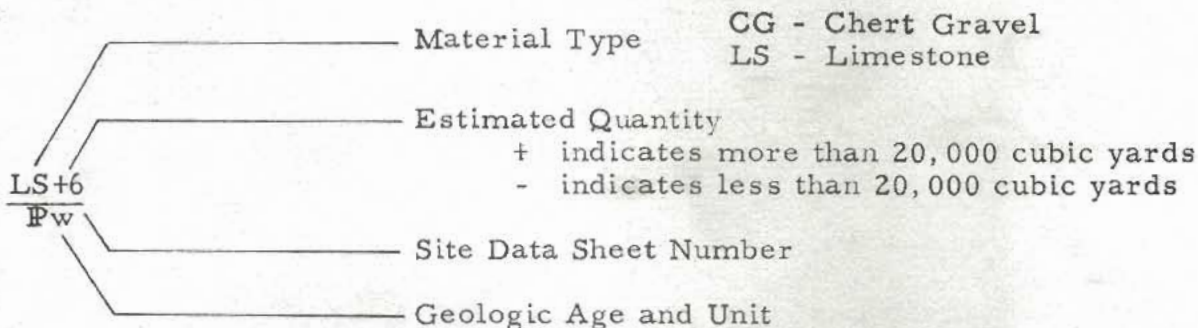
T 23 S



LINN COUNTY MATERIALS MAP LEGEND

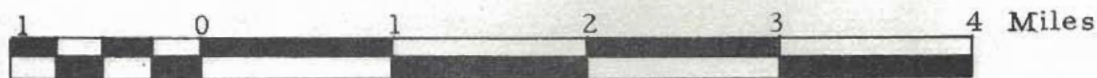
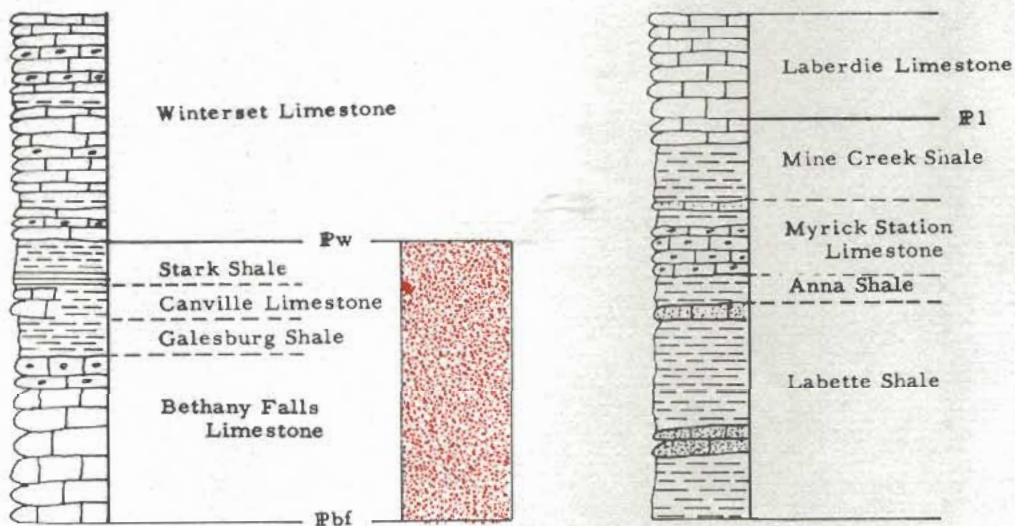
EXPLANATION OF MATERIALS SITE DESIGNATIONS

- Open site; not sampled (Appendix I)
- Open site; sampled (Appendix II)



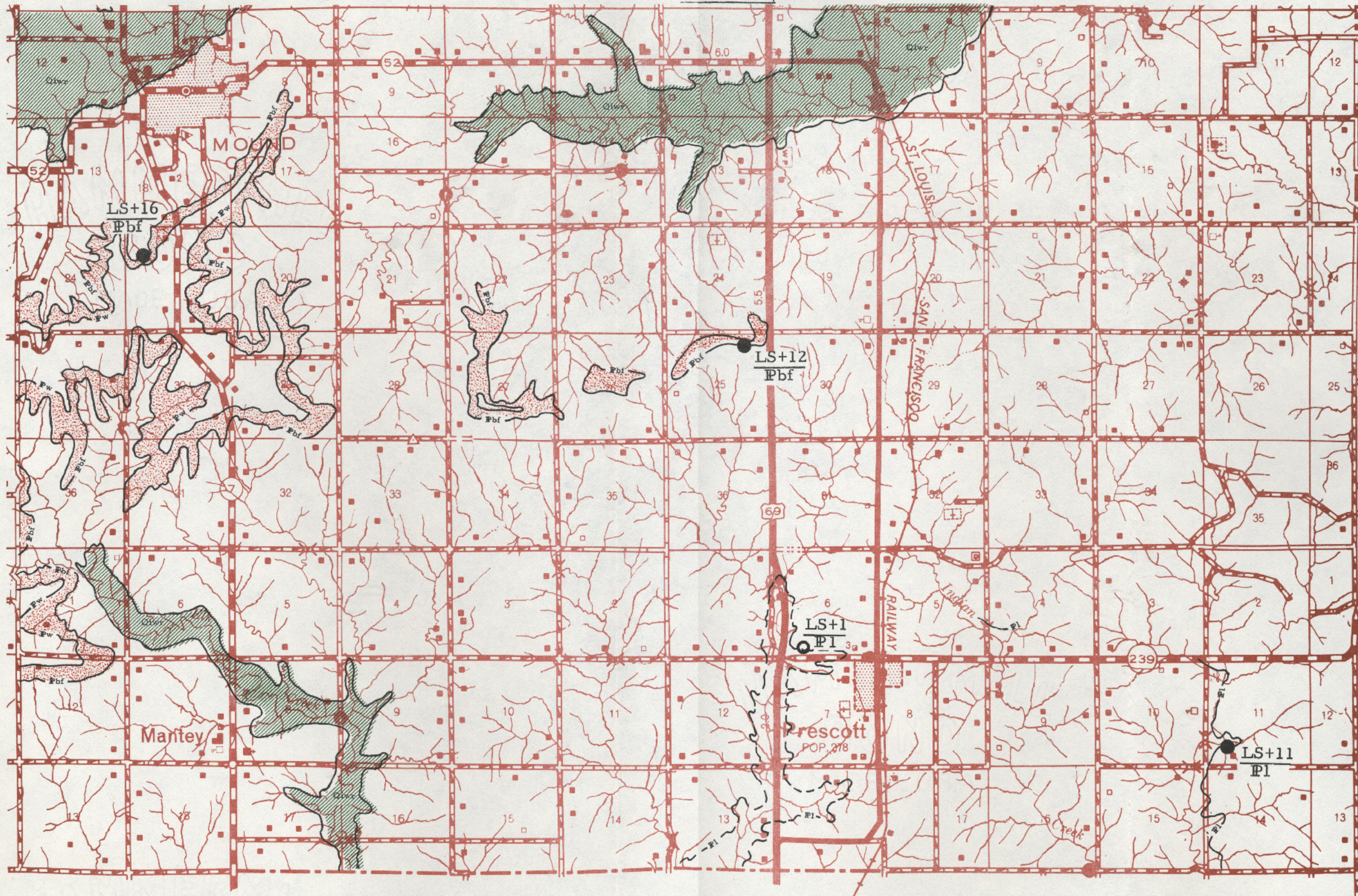
EXPLANATION OF MAP SYMBOLS

Illinoisan, Wisconsinan, and Recent Terrace Deposits



R 23 E
R 24 E

R 24 E
R 25 E



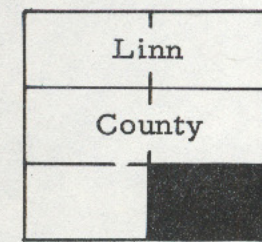
MISSOURI

COUNTY

T 22 S
T 23 S

BATES

VERNON COUNTY



BOURBON

COUNTY

PLATE VI