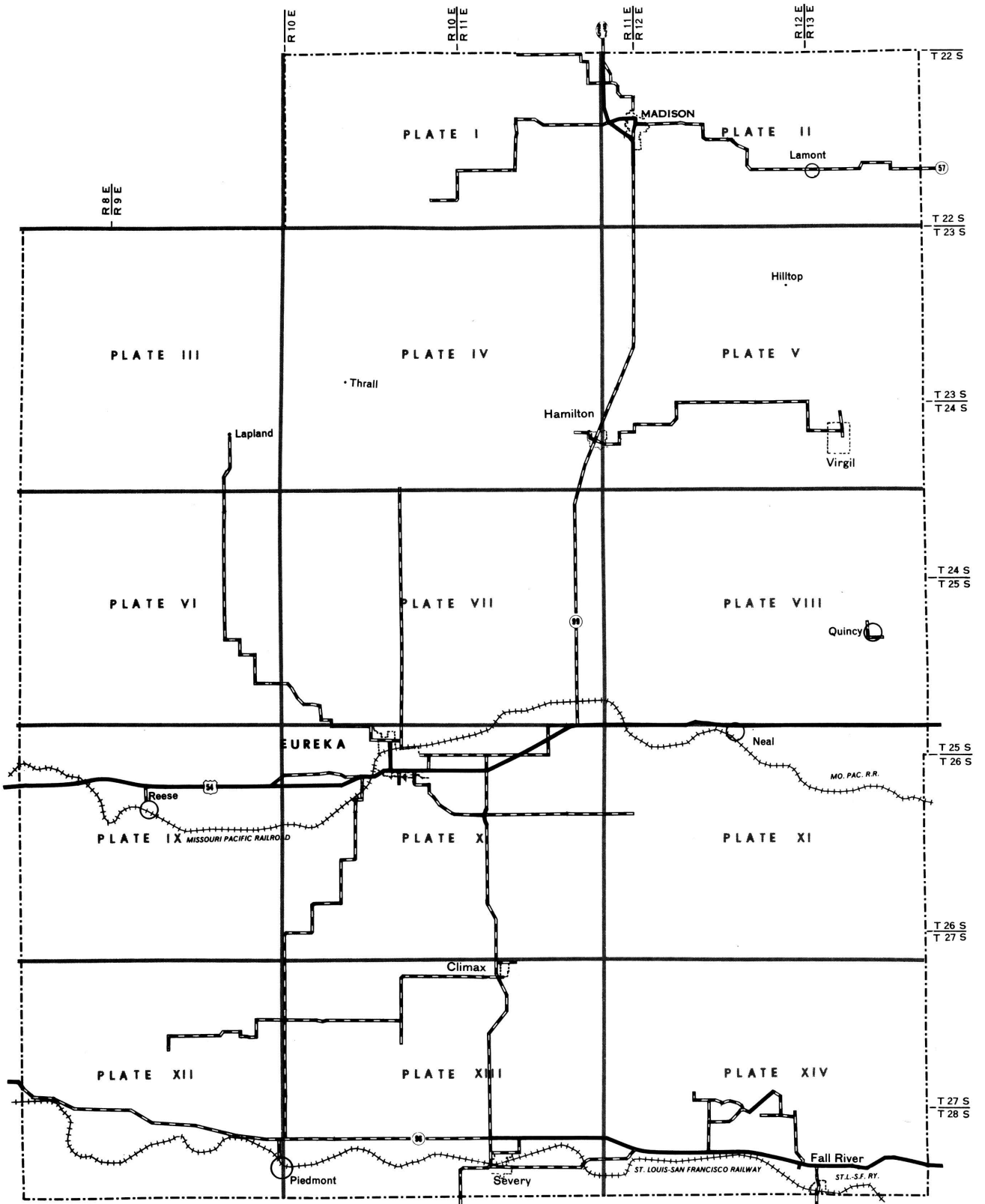


GREENWOOD COUNTY MATERIALS MAP INDEX

On the following pages are fourteen plates covering Greenwood County as shown below.



Note: The individual site data forms follow PLATE XIV.

# LEGEND

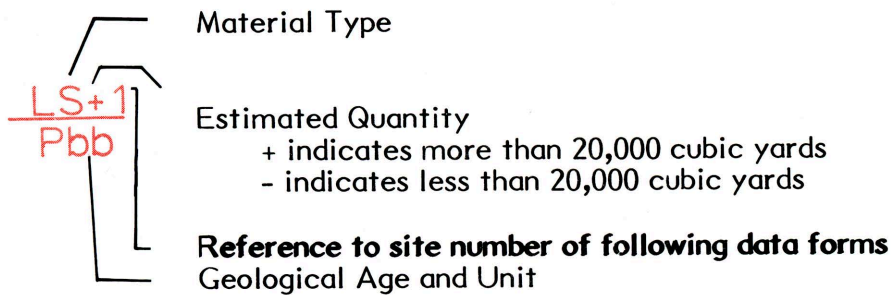
## MATERIALS SITE DESIGNATIONS

- Open Materials Sites; Sampled
- Open Materials Sites; Not Sampled
- ▲ Prospective Materials Sites; Sampled

Page 64

Page 96

Page 126



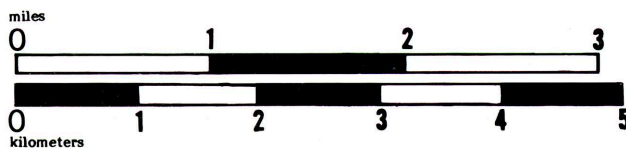
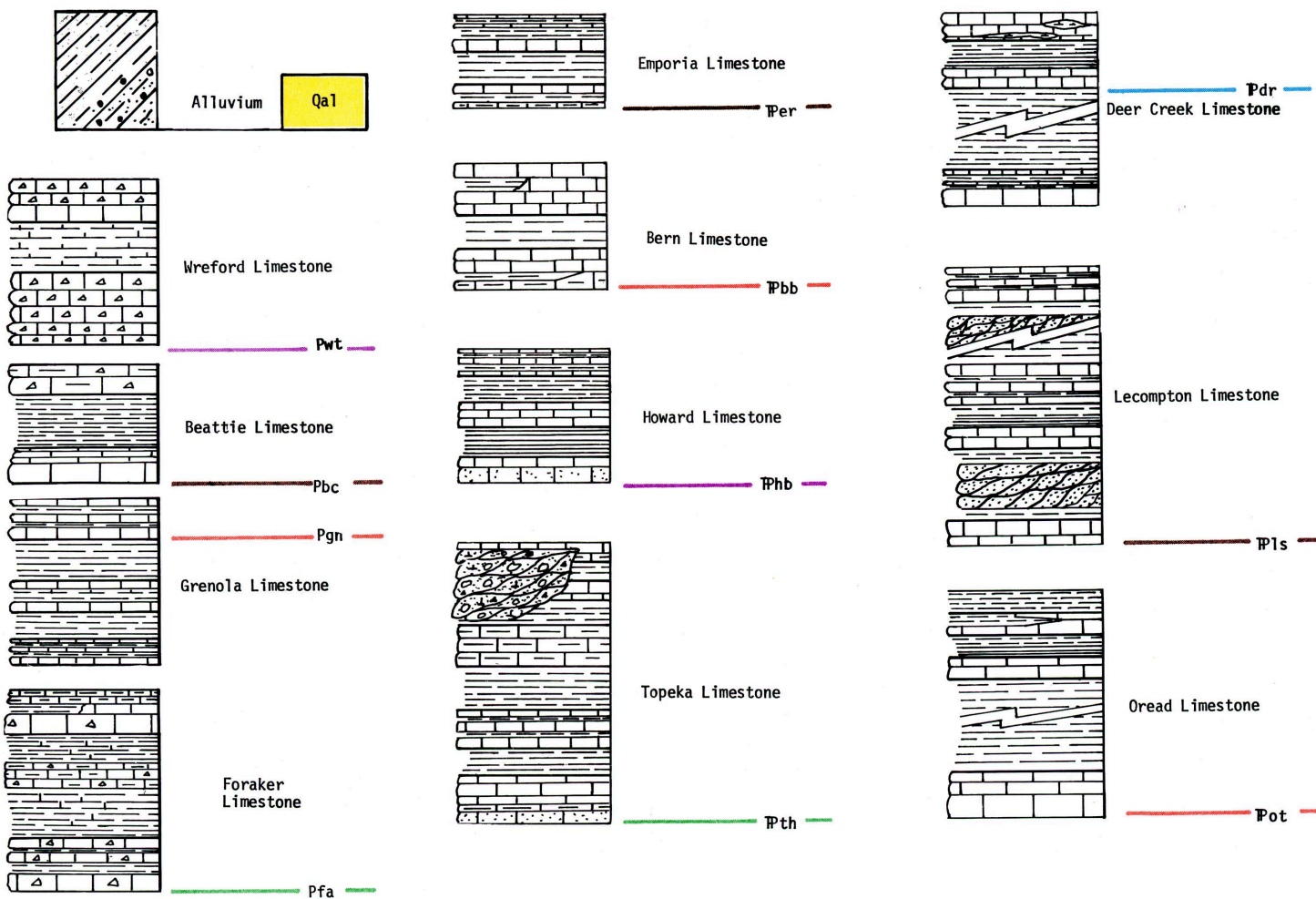
CG Chert Gravel

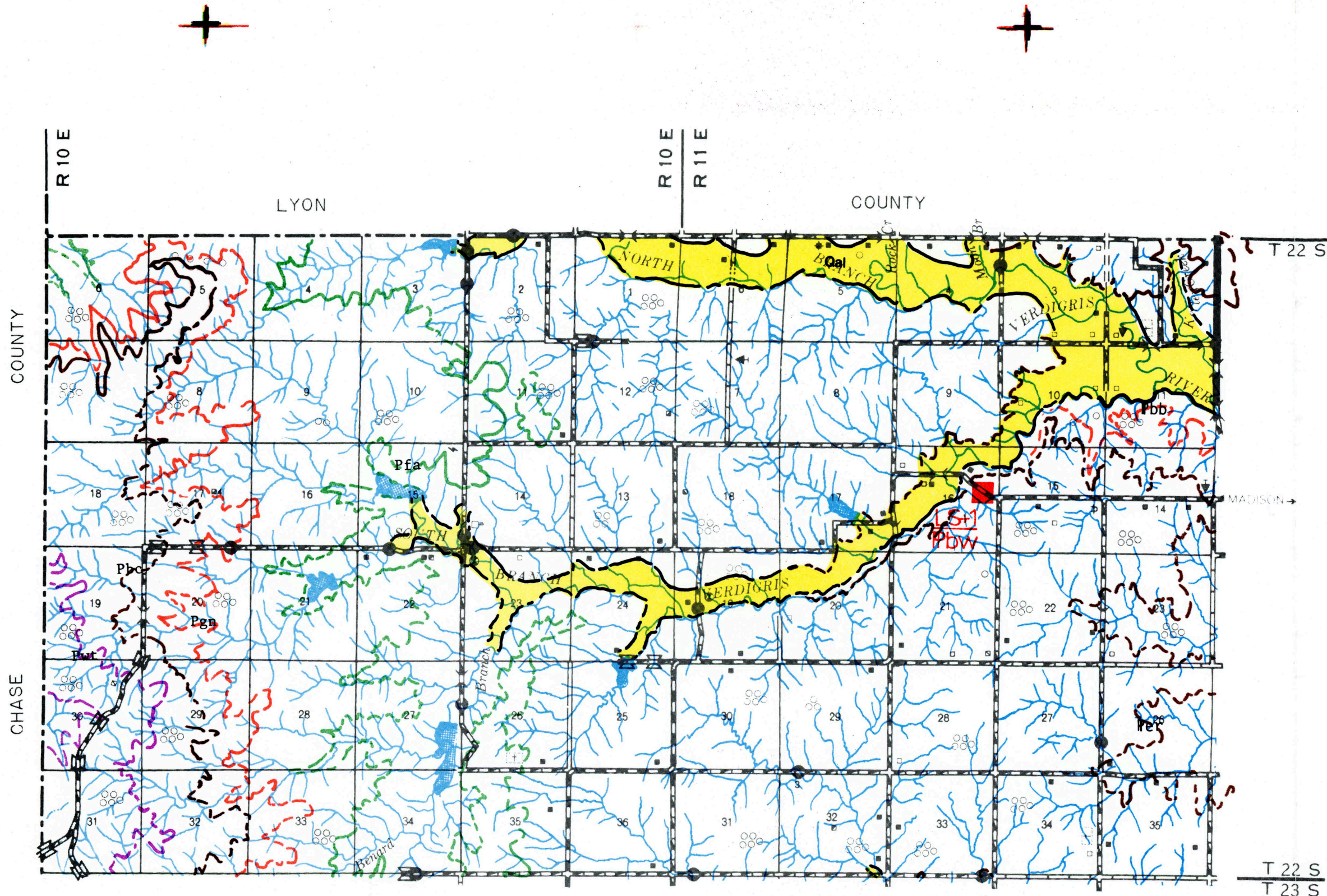
Gr Limestone Gravel

LS Limestone

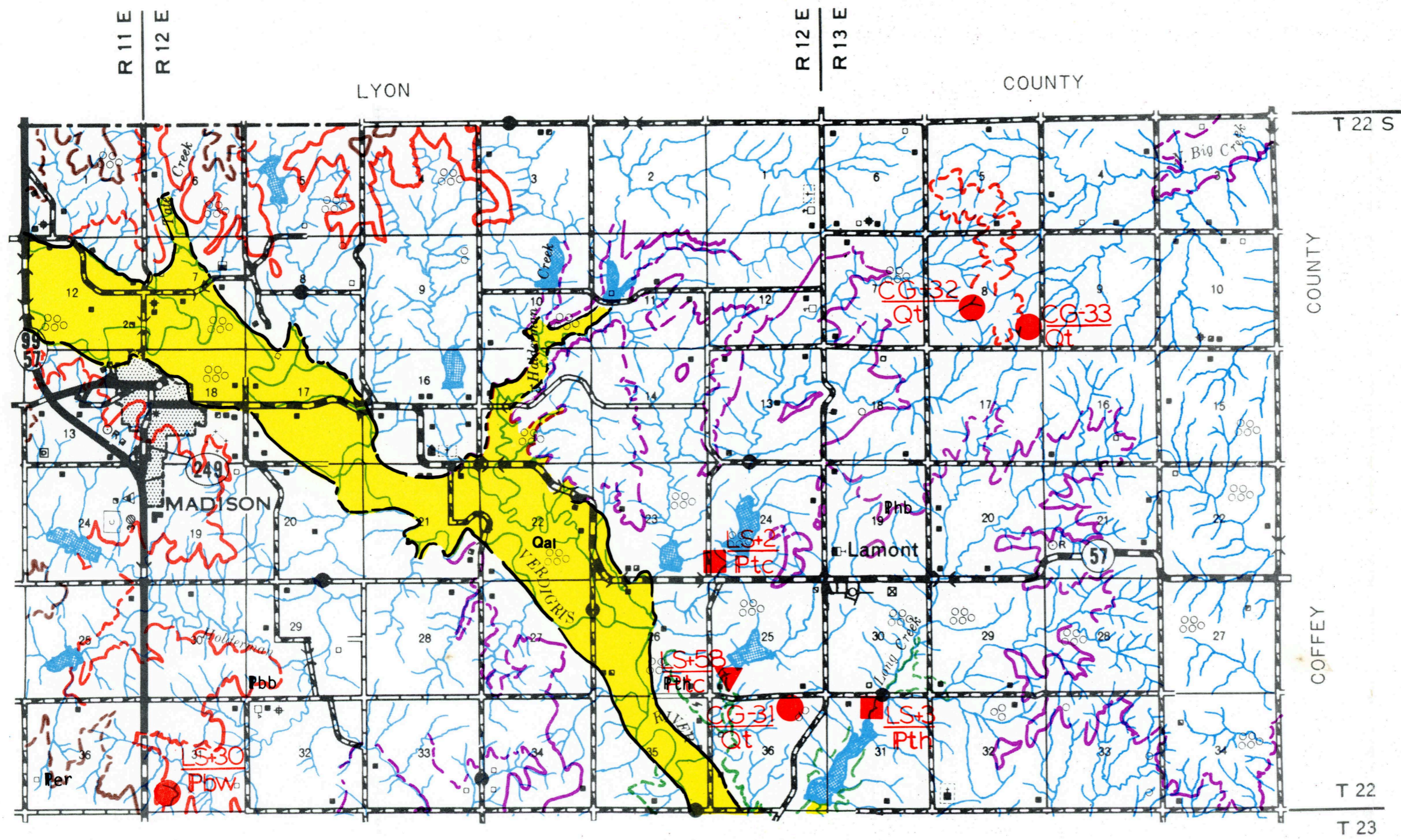
- Geologic Unit Exposed
- - - Geologic Unit Not Exposed

### GEOLOGY



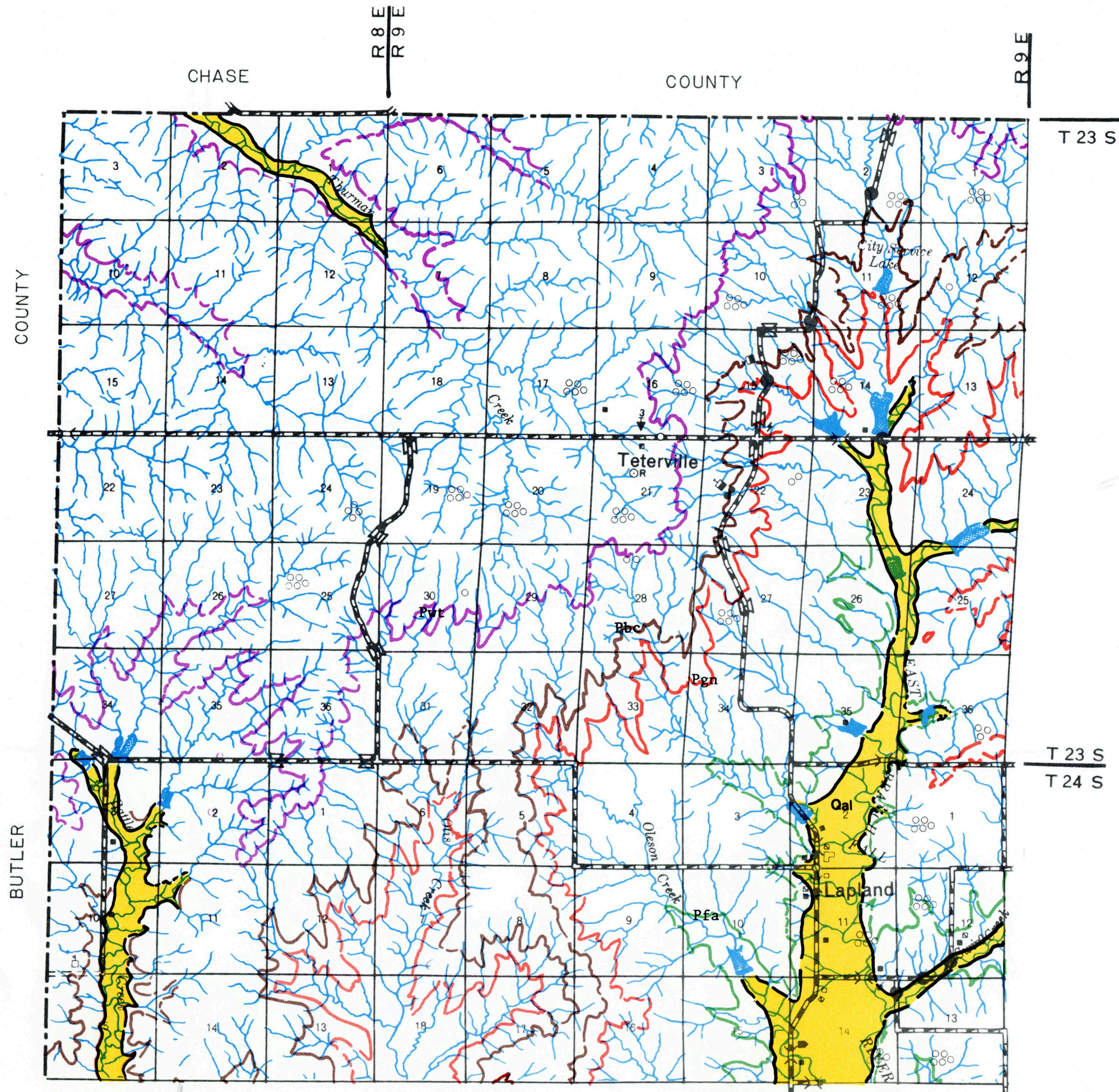


	I	II
III	IV	V
VI	VII	VIII
IX	X	XI
XII	XIII	XIV

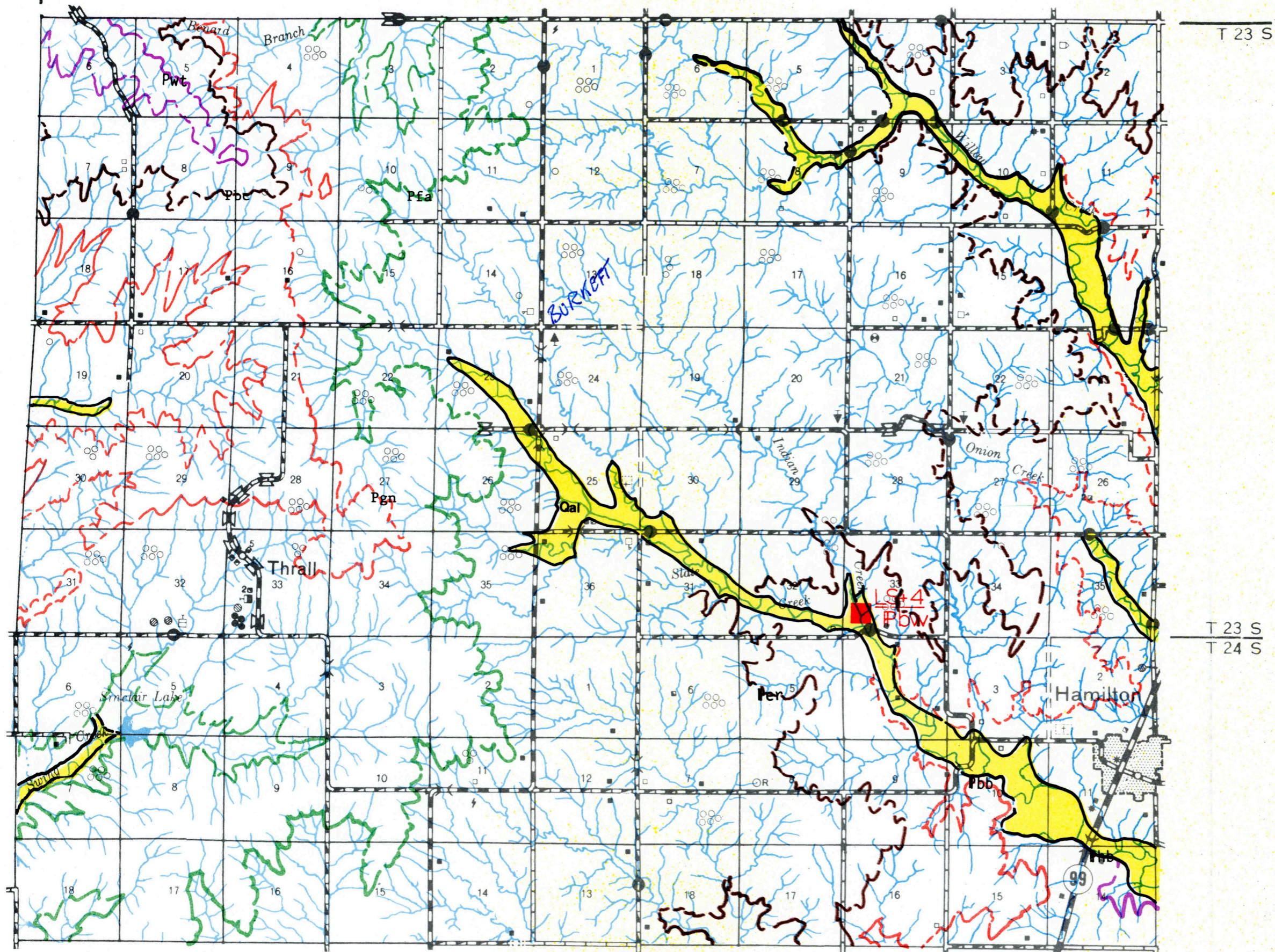


	I	II
III	IV	V
VI	VII	VIII
IX	X	XI
XII	XIII	XIV

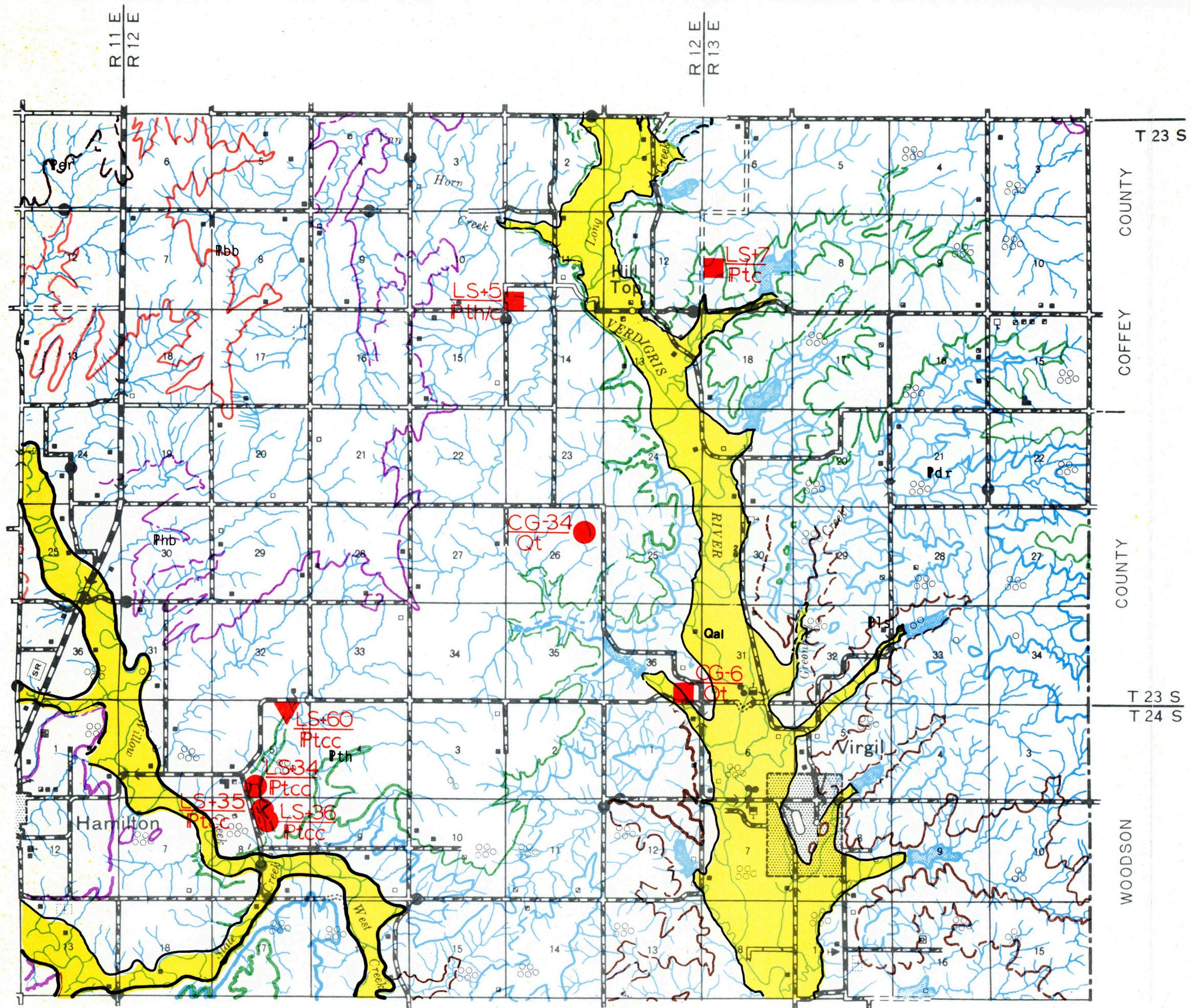
GREENWOOD COUNTY



	I	II
III	IV	V
VI	VII	VIII
IX	X	XI
XII	XIII	XIV

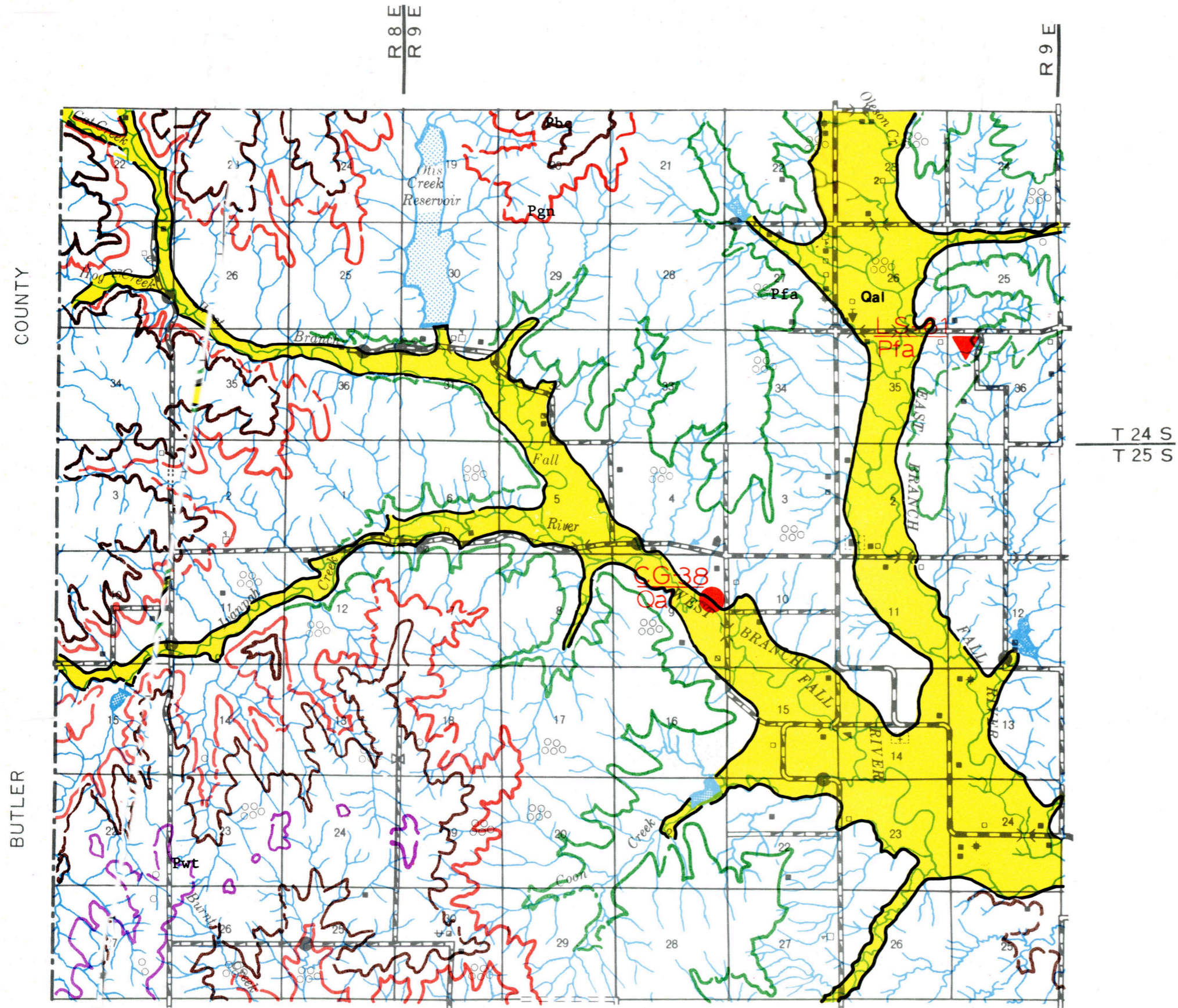


	I	II
III	IV	V
VI	VII	VIII
IX	X	XI
XII	XIII	XIV



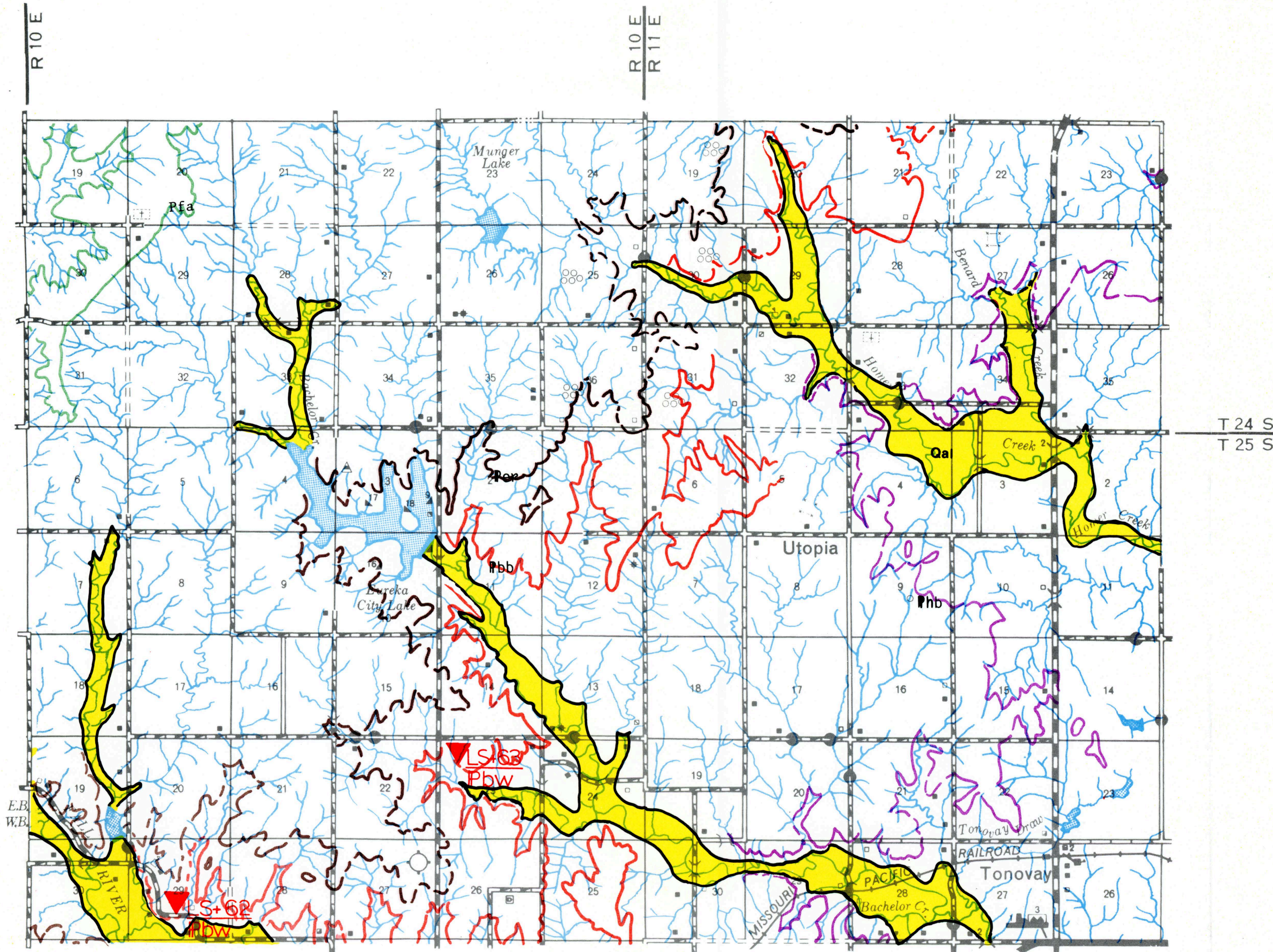
	I	II
III	IV	V
VI	VII	VIII
IX	X	XI
XII	XIII	XIV

GREENWOOD COUNTY

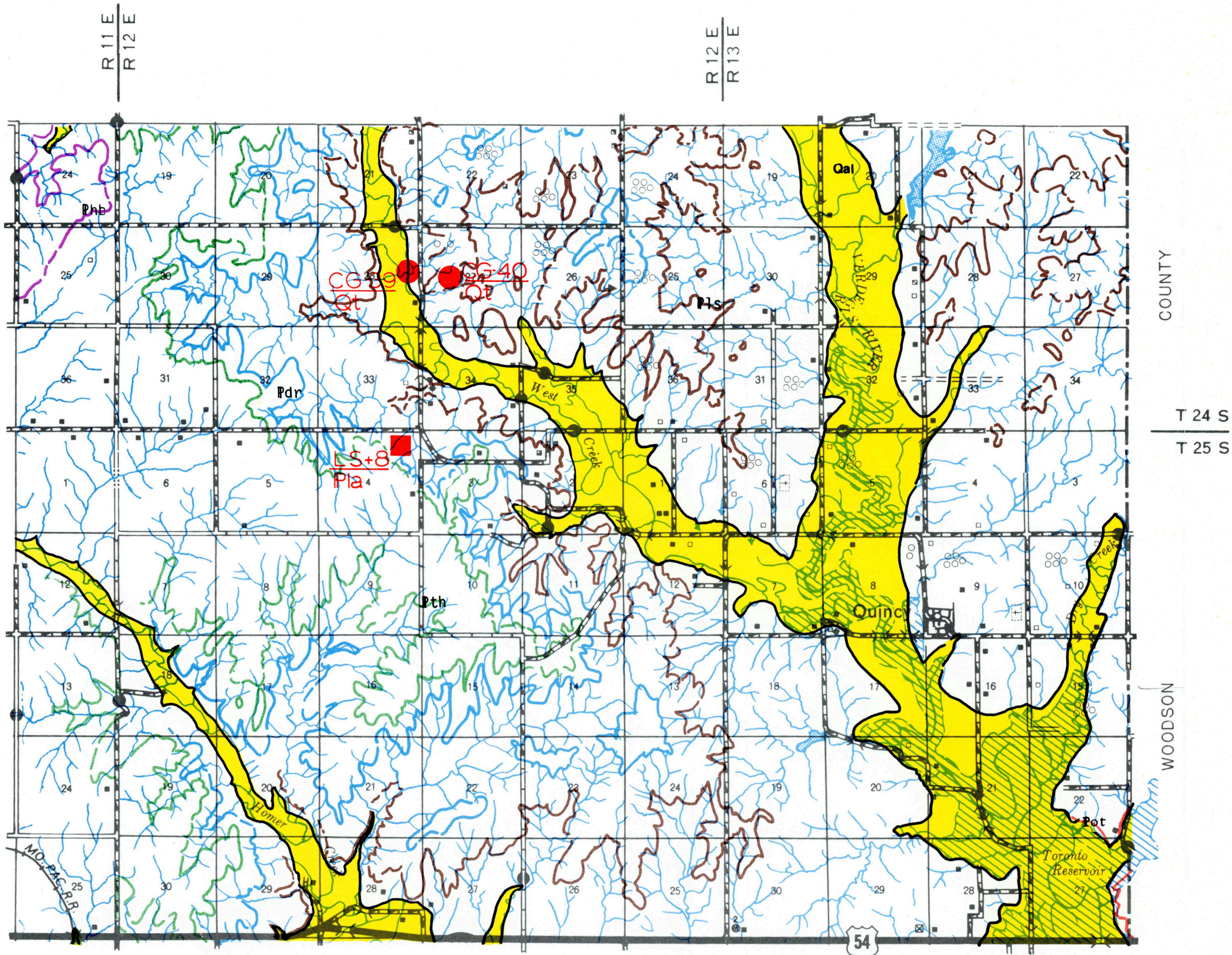


	I	II
III	IV	V
VI	VII	VIII
IX	X	XI
XII	XIII	XIV

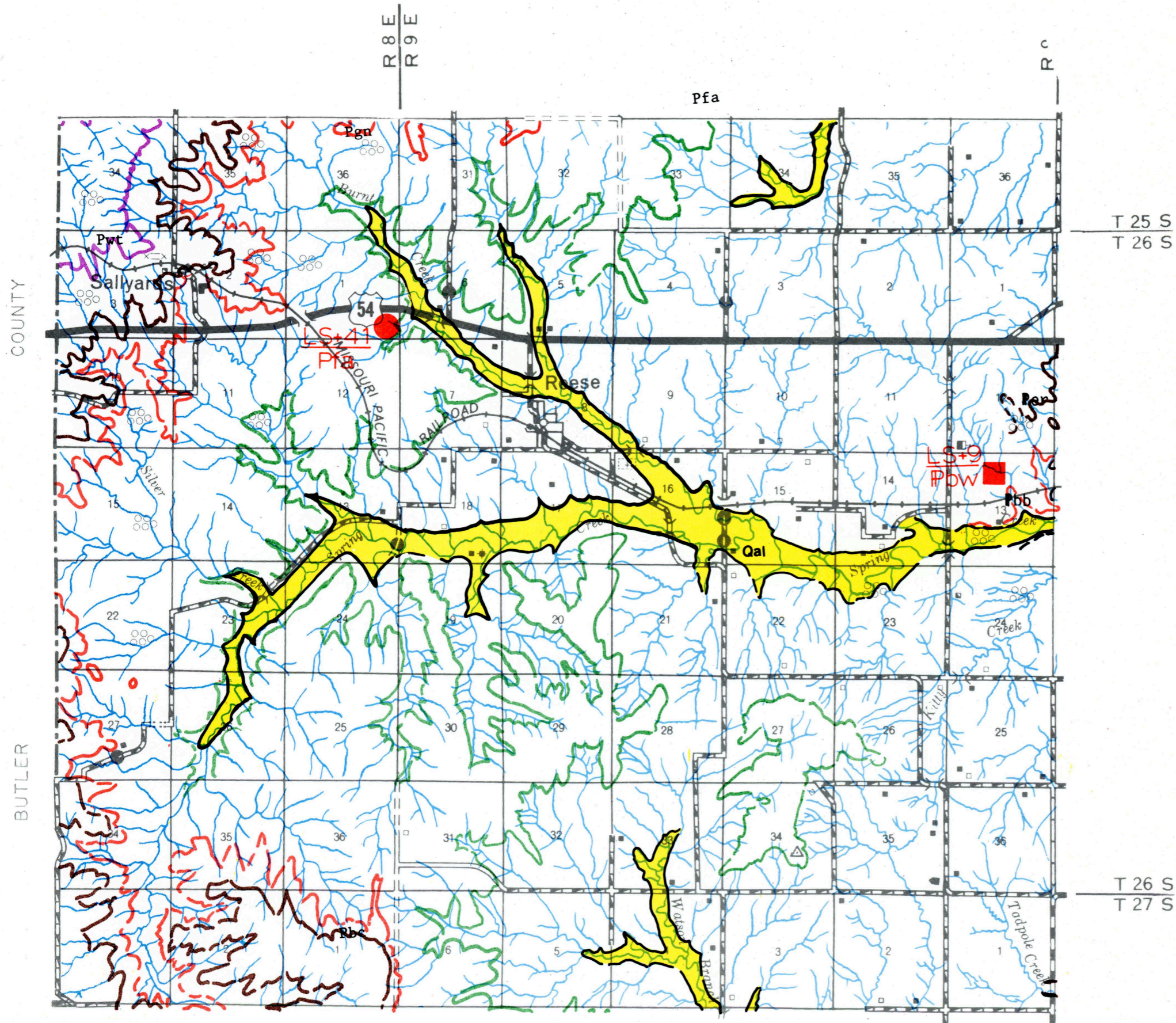




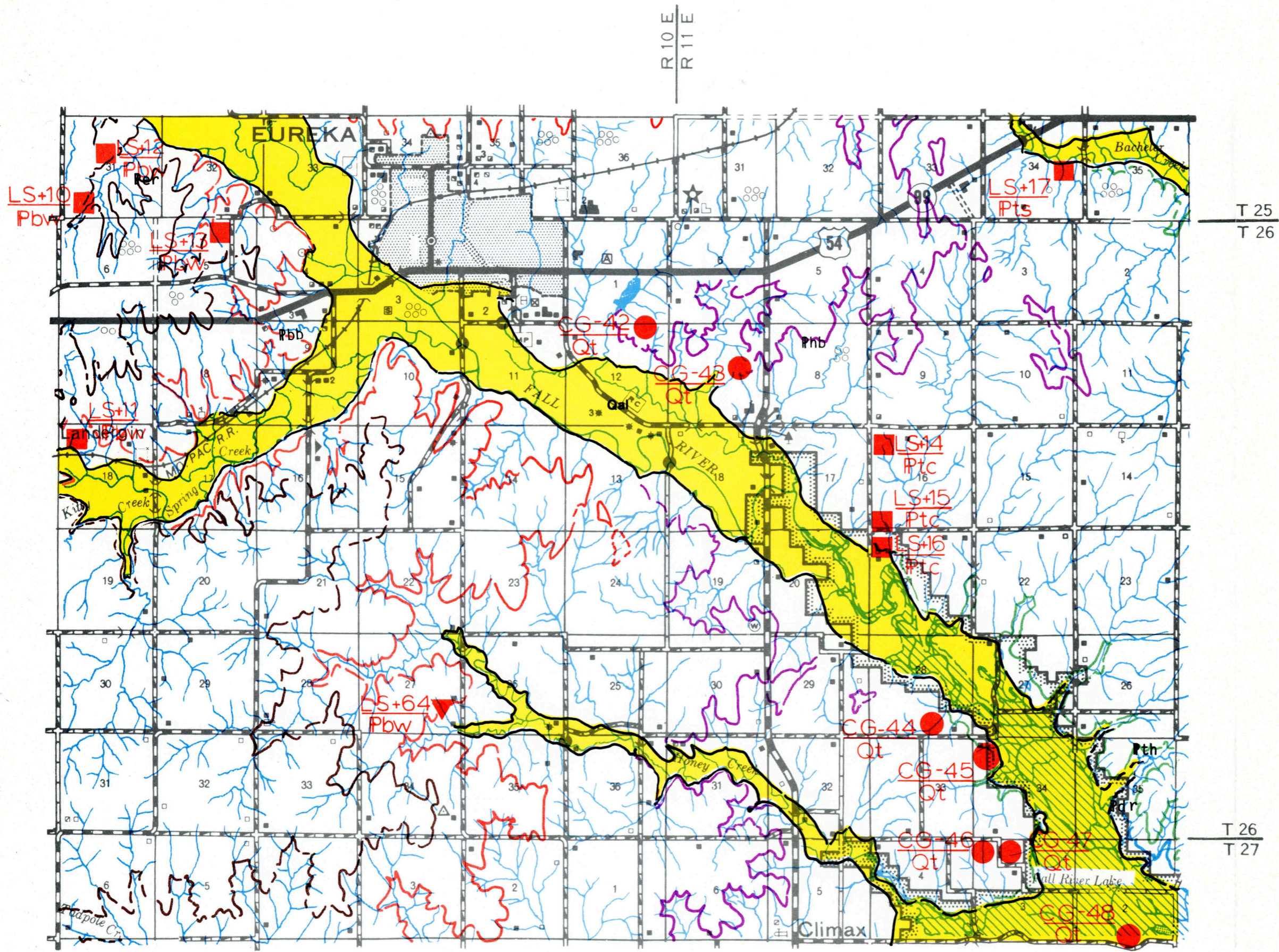
	I	II
III	IV	V
VI	VII	VIII
IX	X	XI
XII	XIII	XIV



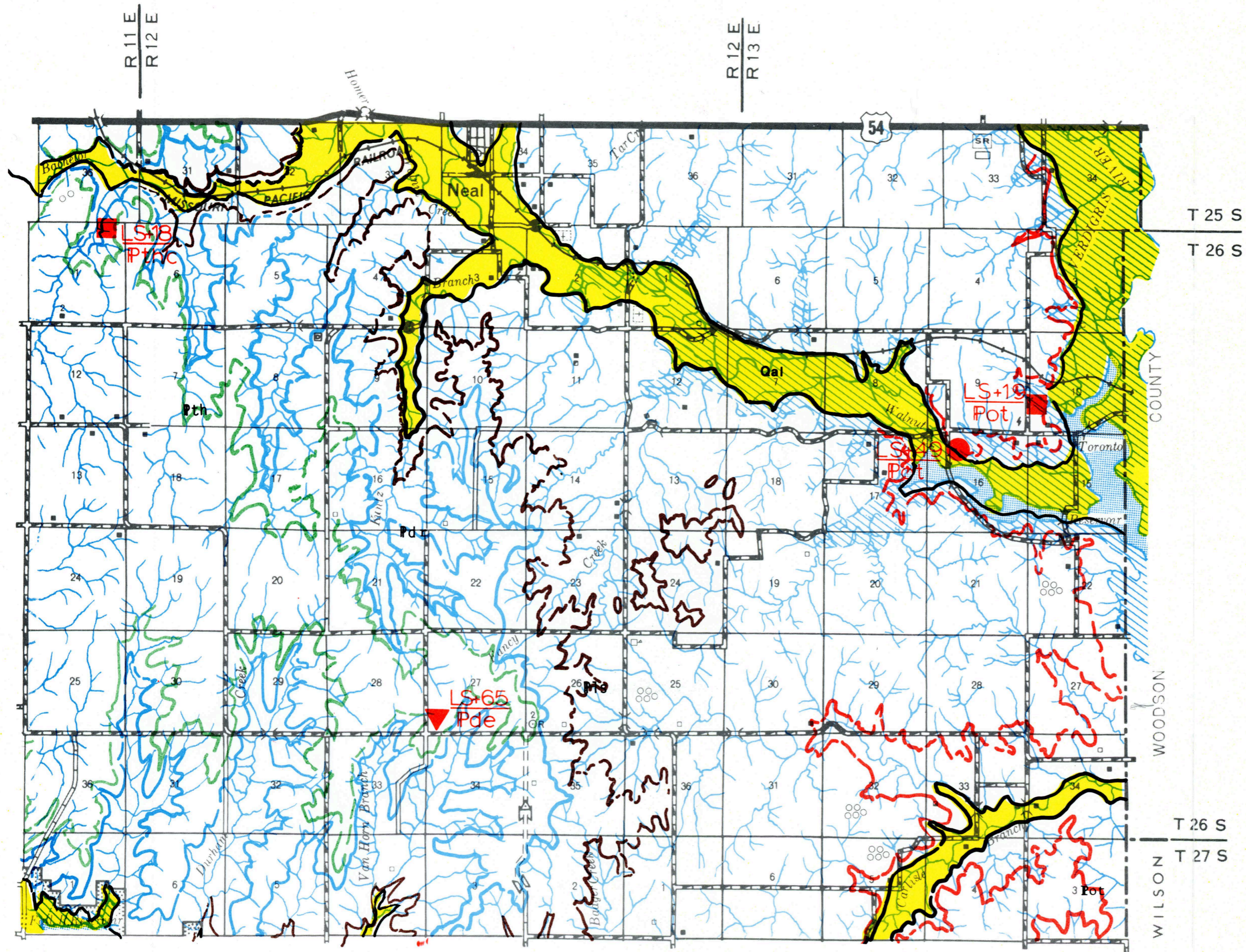
	I	II
III	IV	V
VI	VII	VIII
IX	X	XI
XII	XIII	XIV



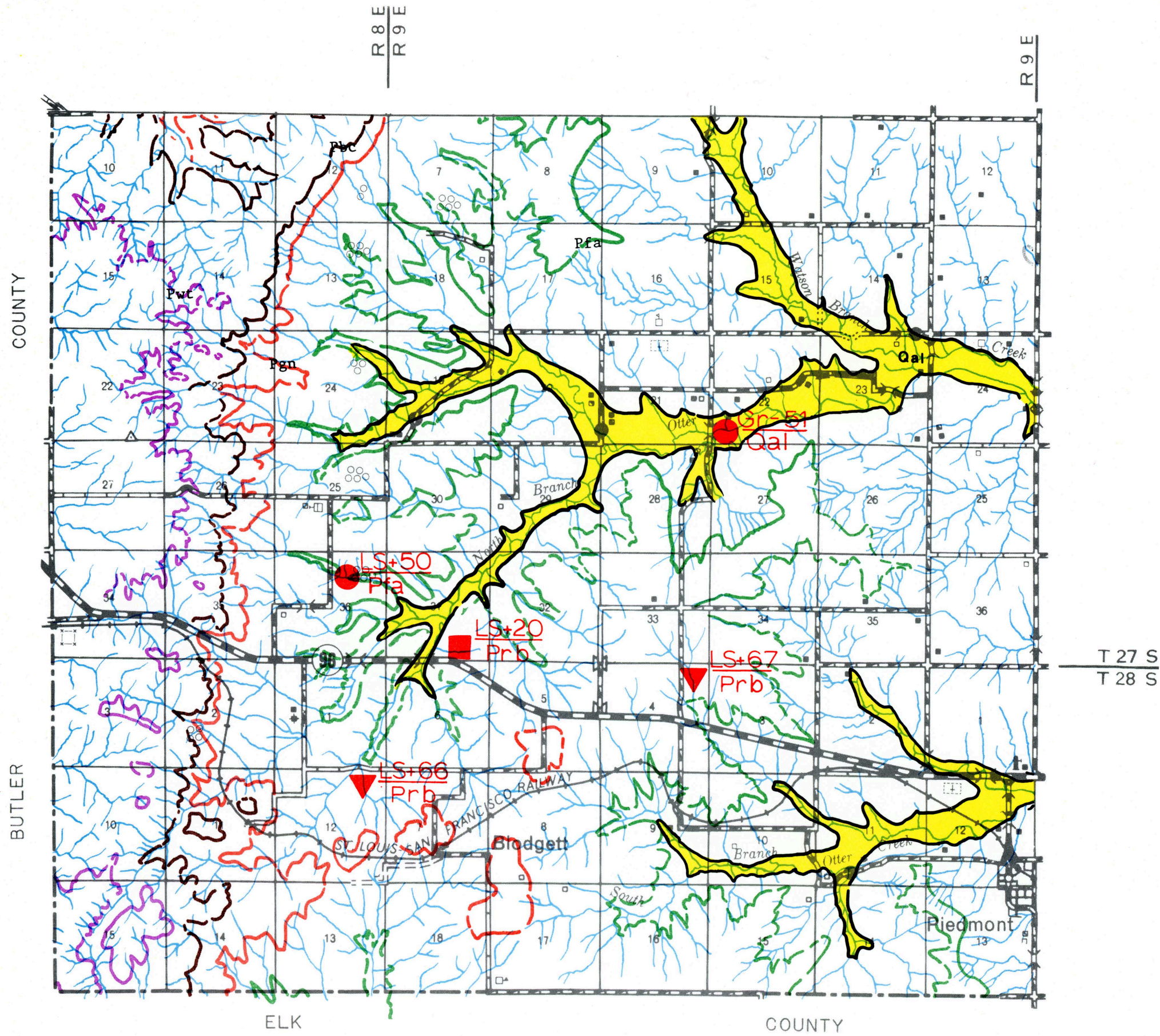
	I	II
III	IV	V
VI	VII	VIII
IX	X	XI
XII	XIII	XIV



	I	II
III	IV	V
VI	VII	VIII
IX	X	XI
XII	XIII	XIV



	I	II
III	IV	V
VI	VII	VIII
IX	X	XI
XII	XIII	XIV

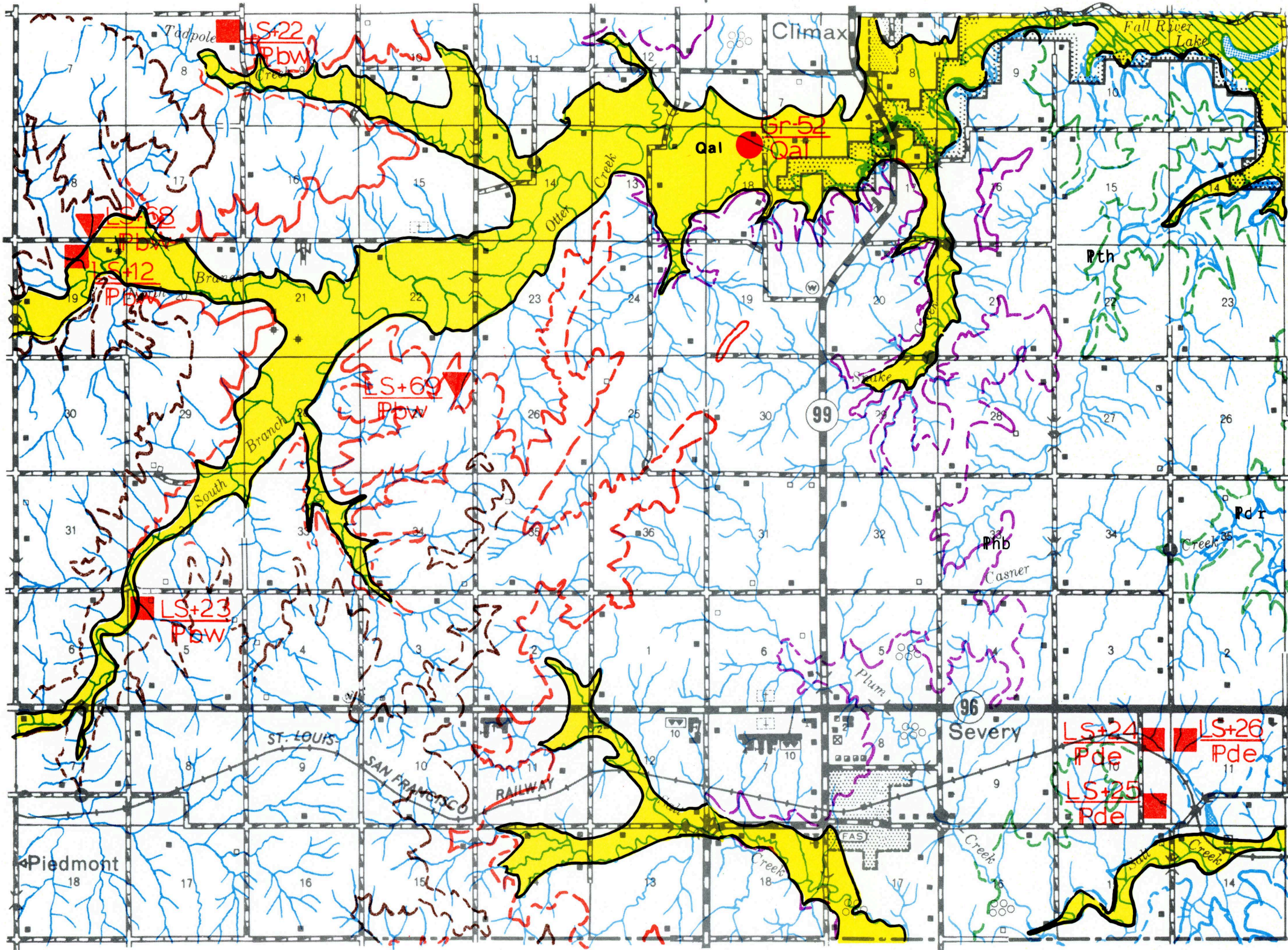


	I	II
III	IV	V
VI	VII	VIII
IX	X	XI
XII	XIII	XIV

R 9 E  
R 10 E

R 10 E  
R 11 E

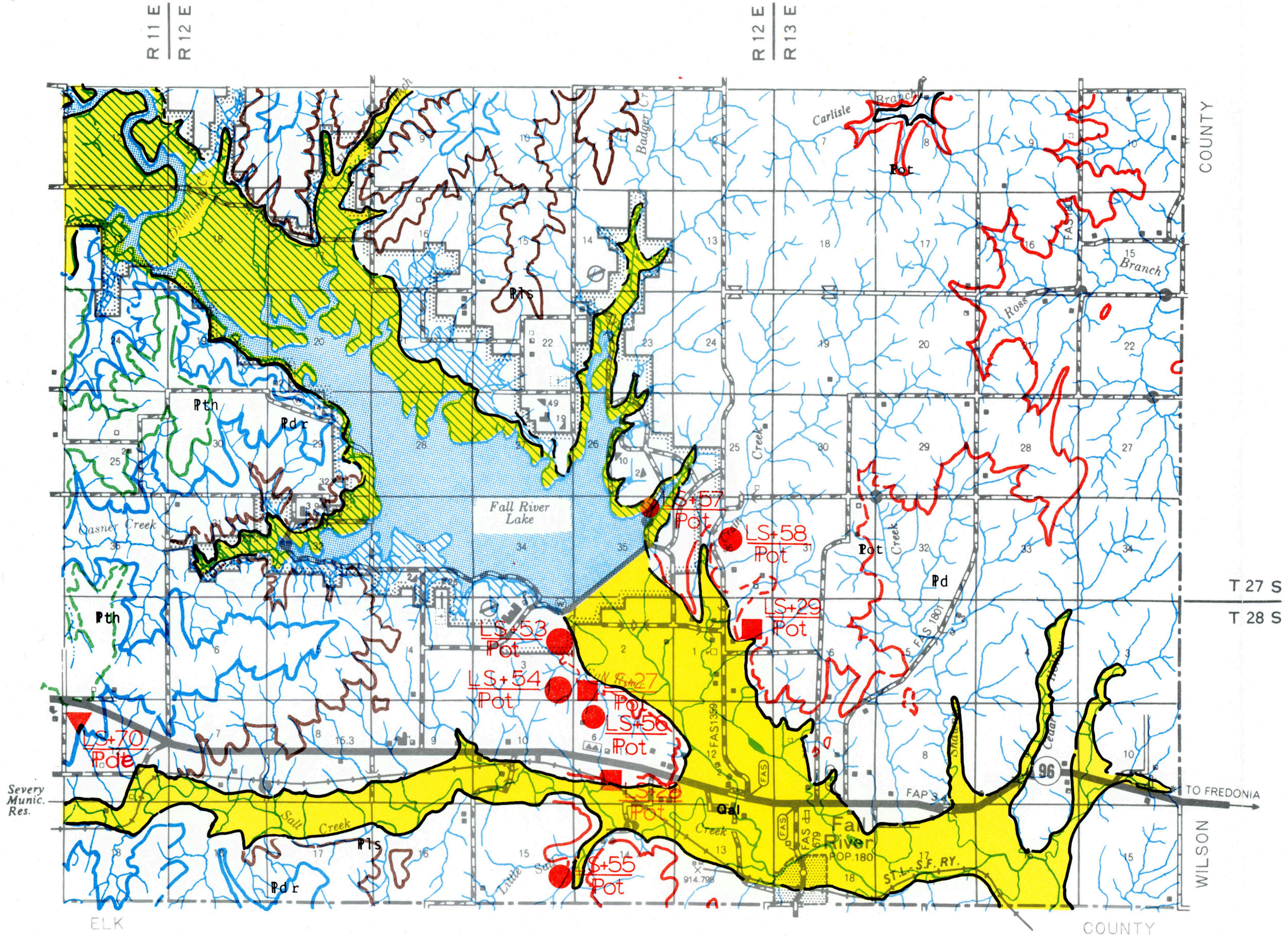
T 27 S  
T 28 S



ELK

COUNTY

	I	II
III	IV	V
VI	VII	VIII
IX	X	XI
XII	<b>XIII</b>	XIV



	I	II
III	IV	V
VI	VII	VIII
IX	X	XI
XII	XIII	XIV