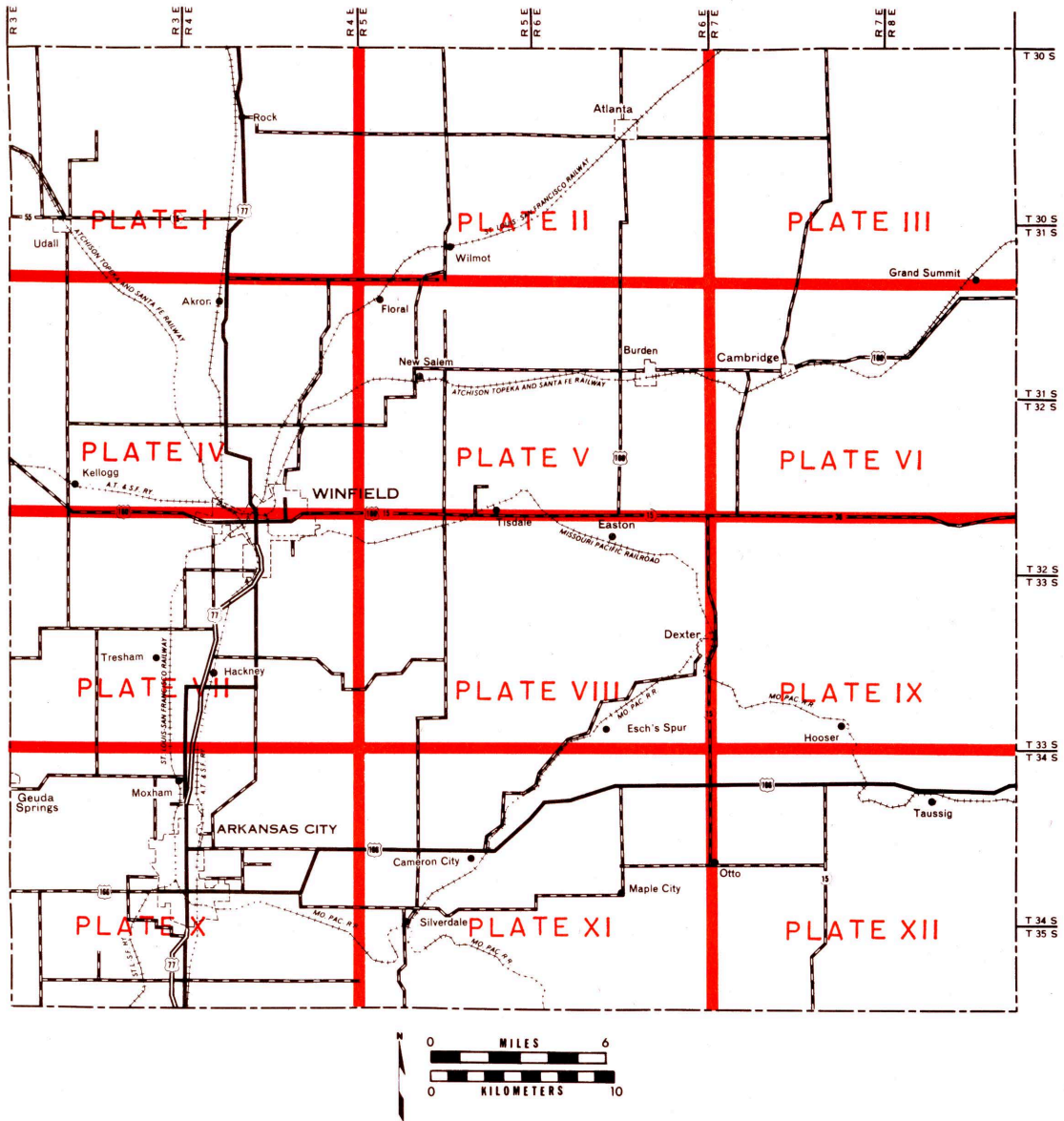


COWLEY COUNTY MATERIALS MAP INDEX

On the following pages are the twelve plates covering Cowley County as shown below.

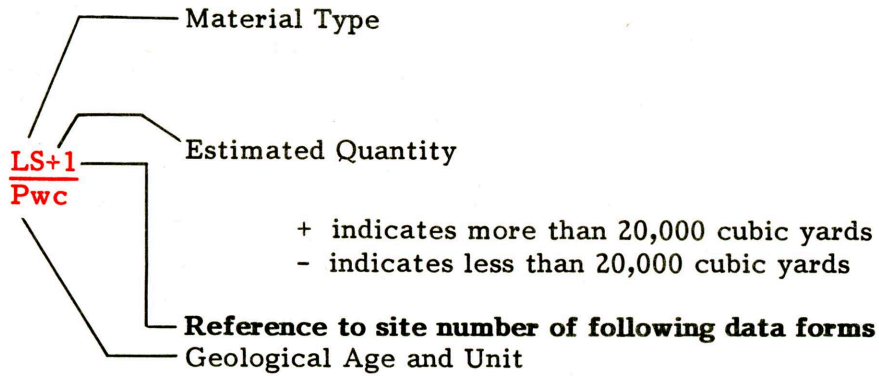


Note: The individual site data forms follow plate XII.

LEGEND

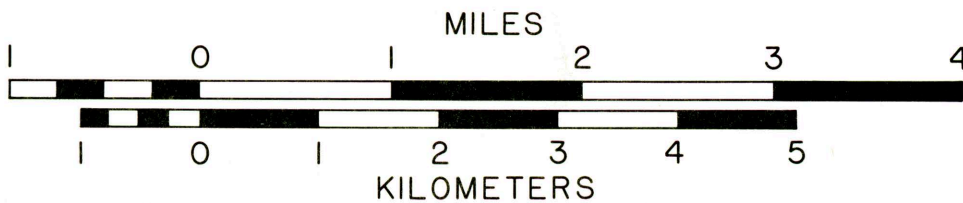
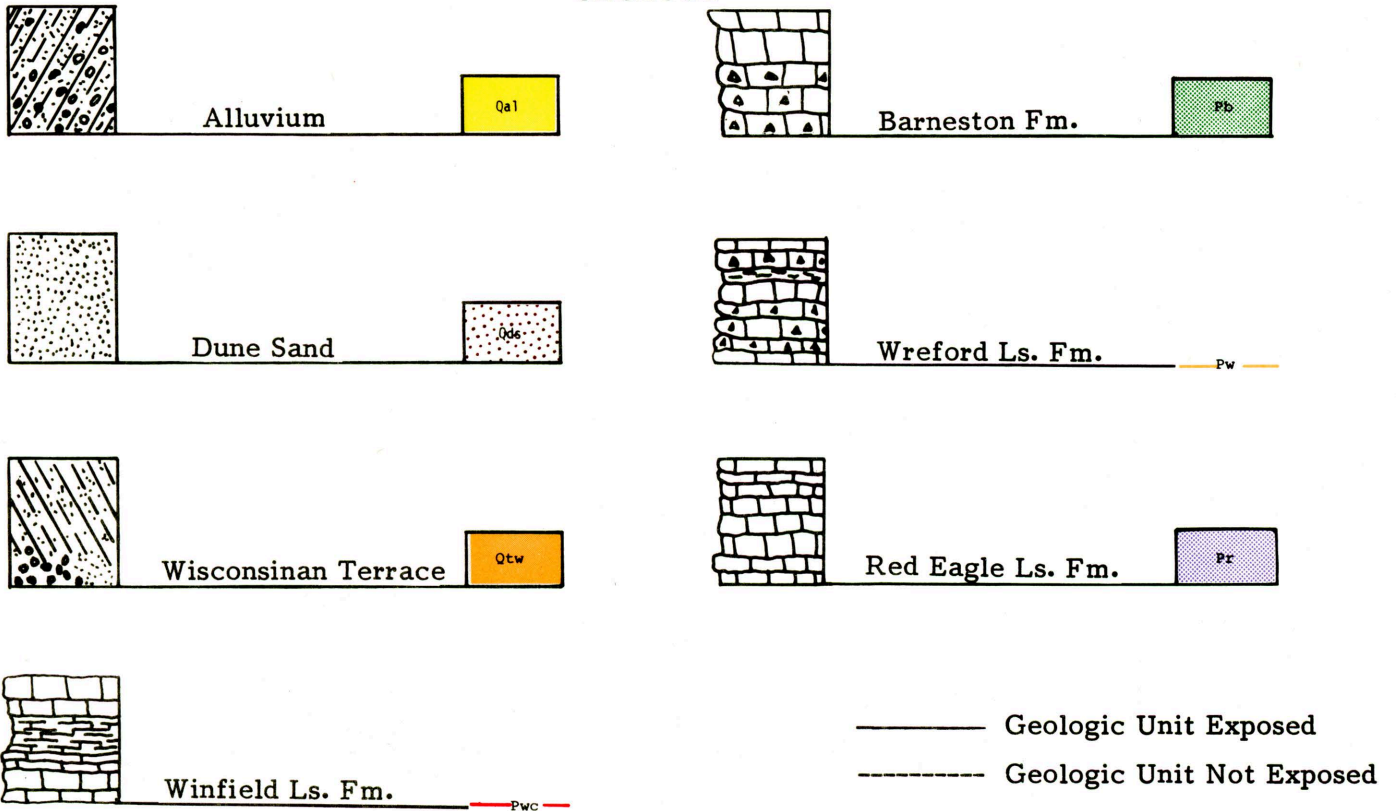
MATERIALS SITE DESIGNATIONS

- Open Materials Sites; Sampled Page 32
- Open Materials Sites; Not Sampled Page 60
- ▼ Prospective Materials Sites; Sampled Page 76
- ◆ Prospective Materials Sites; Not Sampled Page 82



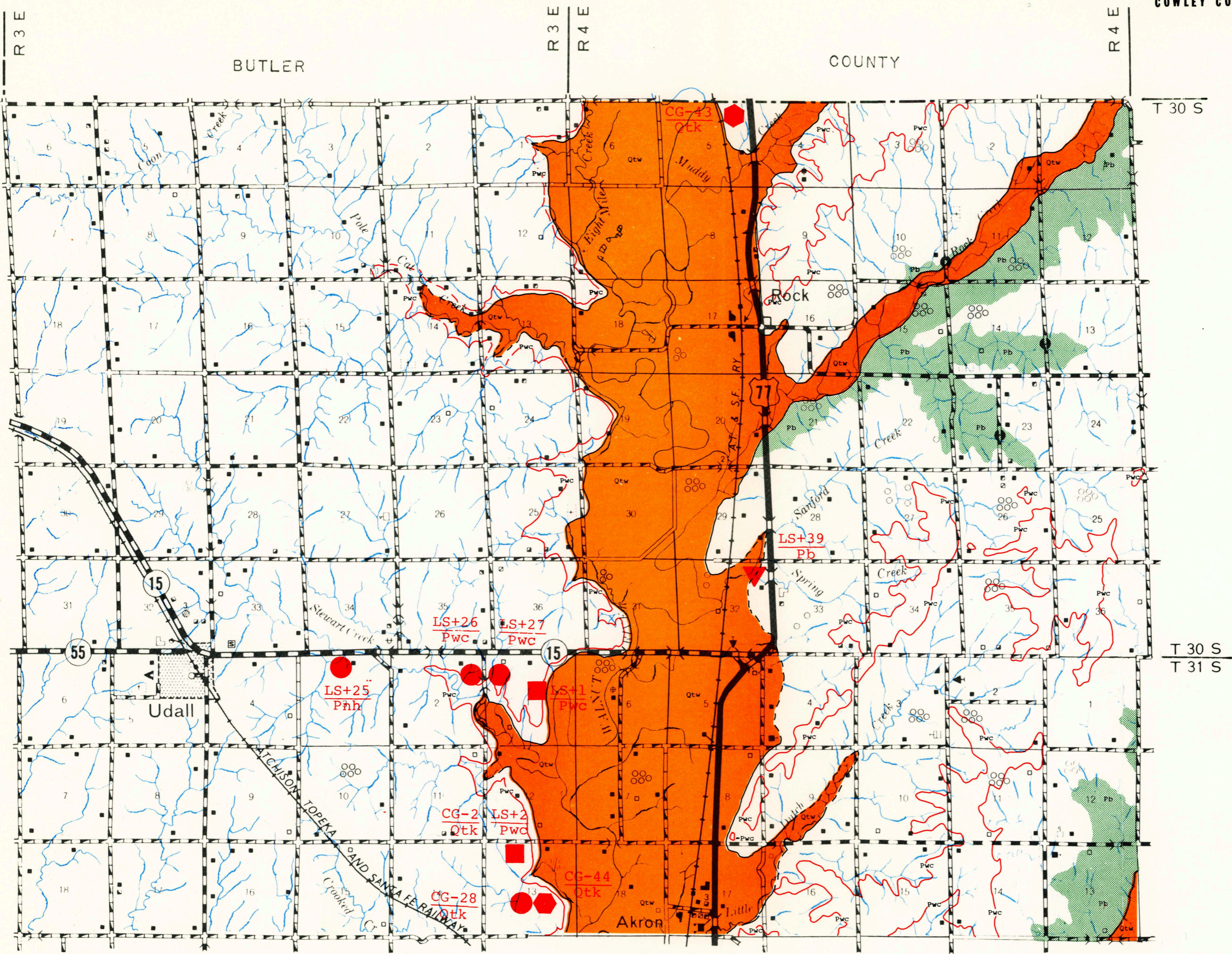
- CG Chert Gravel
- SG Sand Gravel
- LS Limestone

GEOLOGY



COUNTY

SUMNER



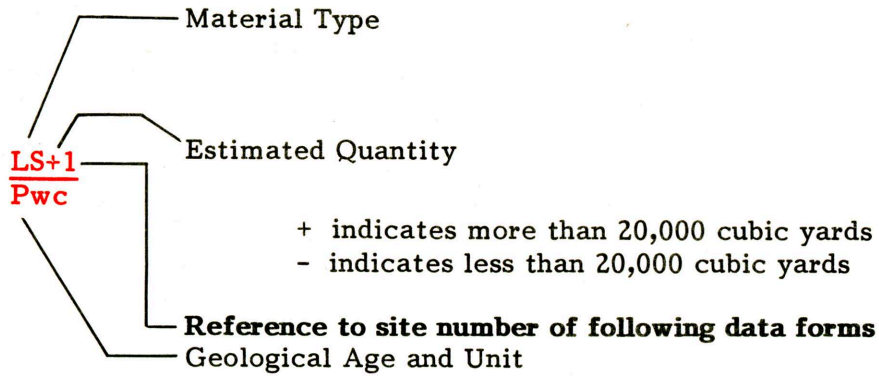
I	II	III
IV	V	VI
VII	VIII	IX
X	XI	XII

COWLEY COUNTY

LEGEND

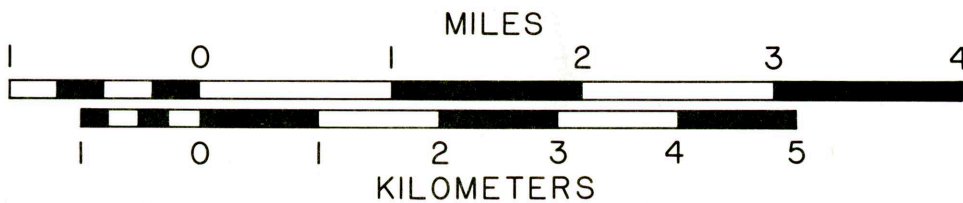
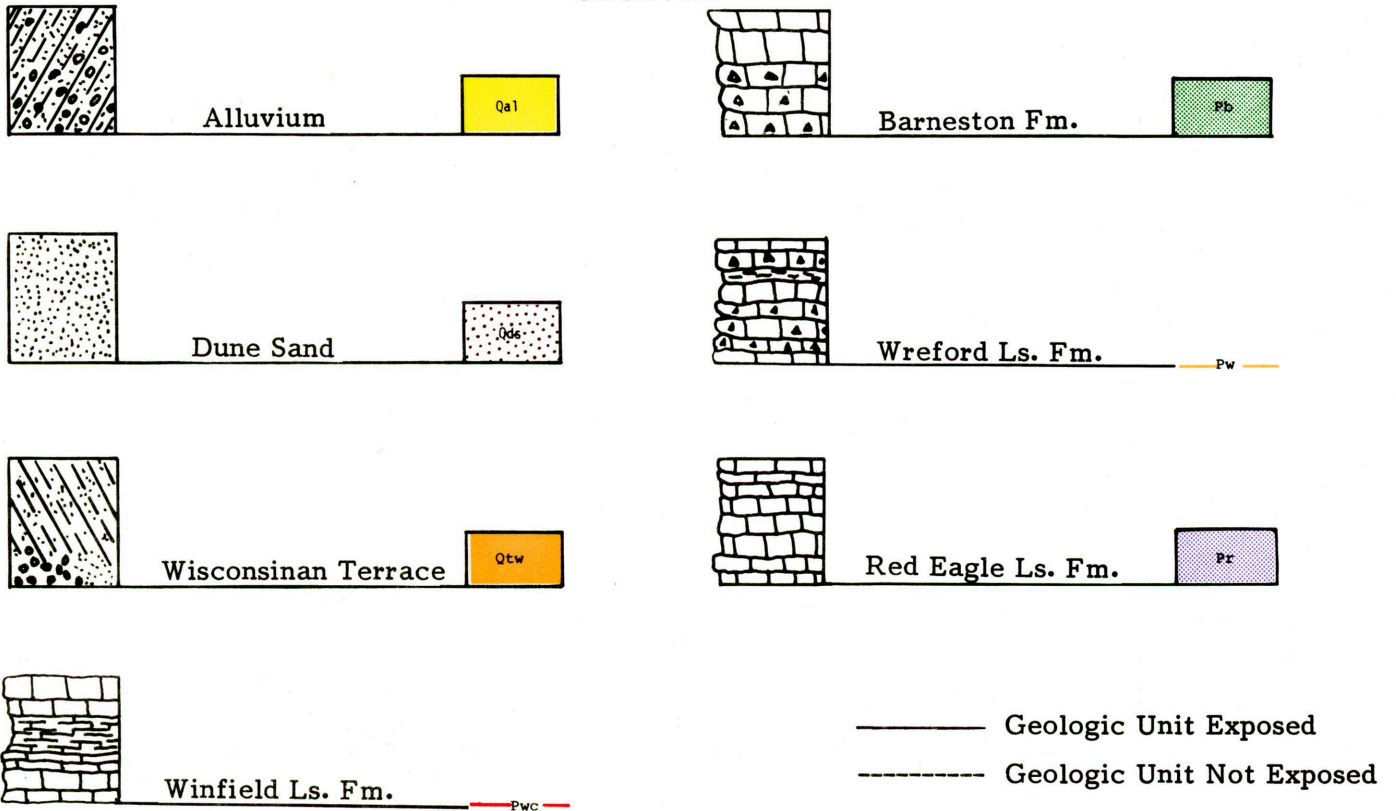
MATERIALS SITE DESIGNATIONS

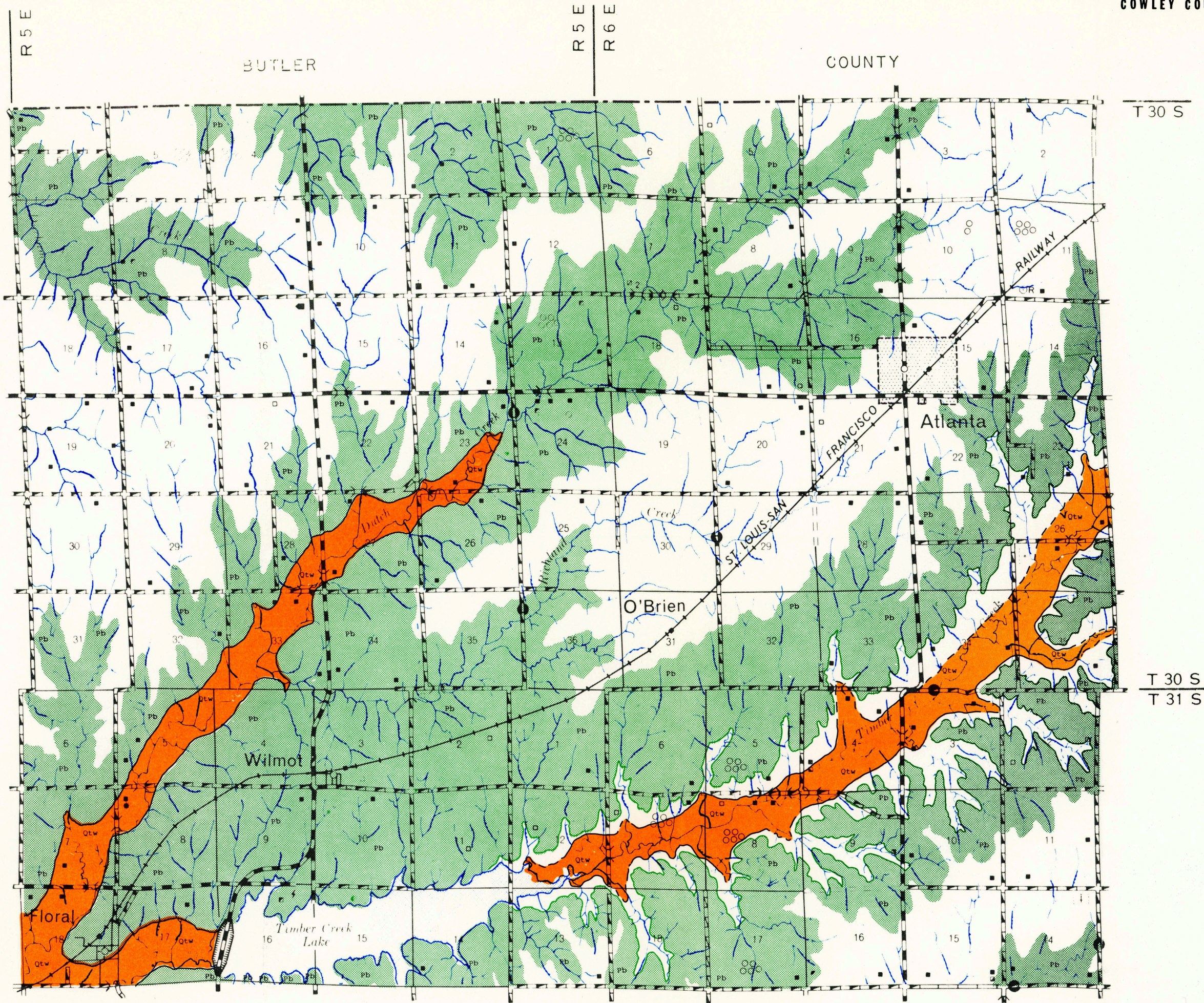
- Open Materials Sites; Sampled Page 32
- Open Materials Sites; Not Sampled Page 60
- ▼ Prospective Materials Sites; Sampled Page 76
- ◆ Prospective Materials Sites; Not Sampled Page 82



- CG Chert Gravel
- SG Sand Gravel
- LS Limestone

GEOLOGY



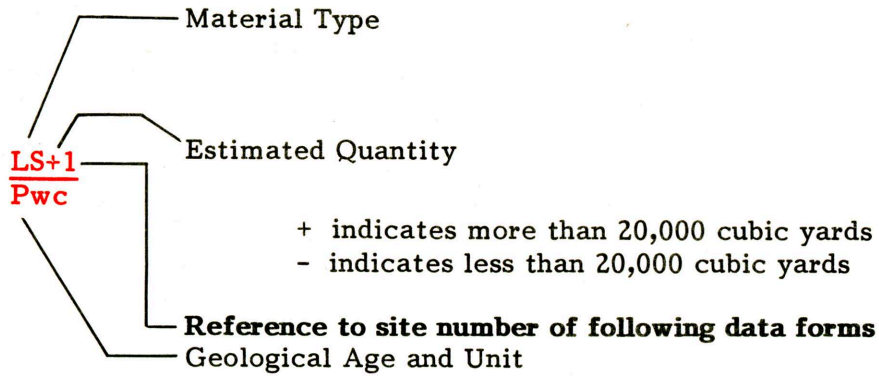


I	II	III
IV	V	VI
VII	VIII	IX
X	XI	XII

LEGEND

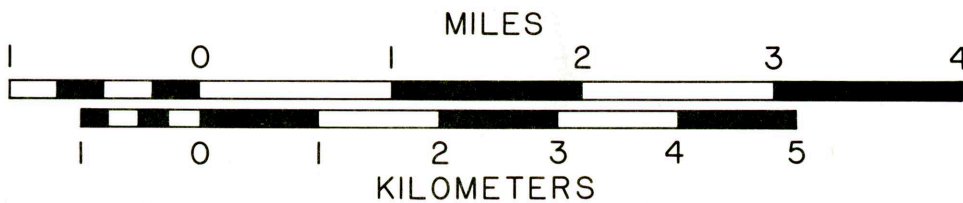
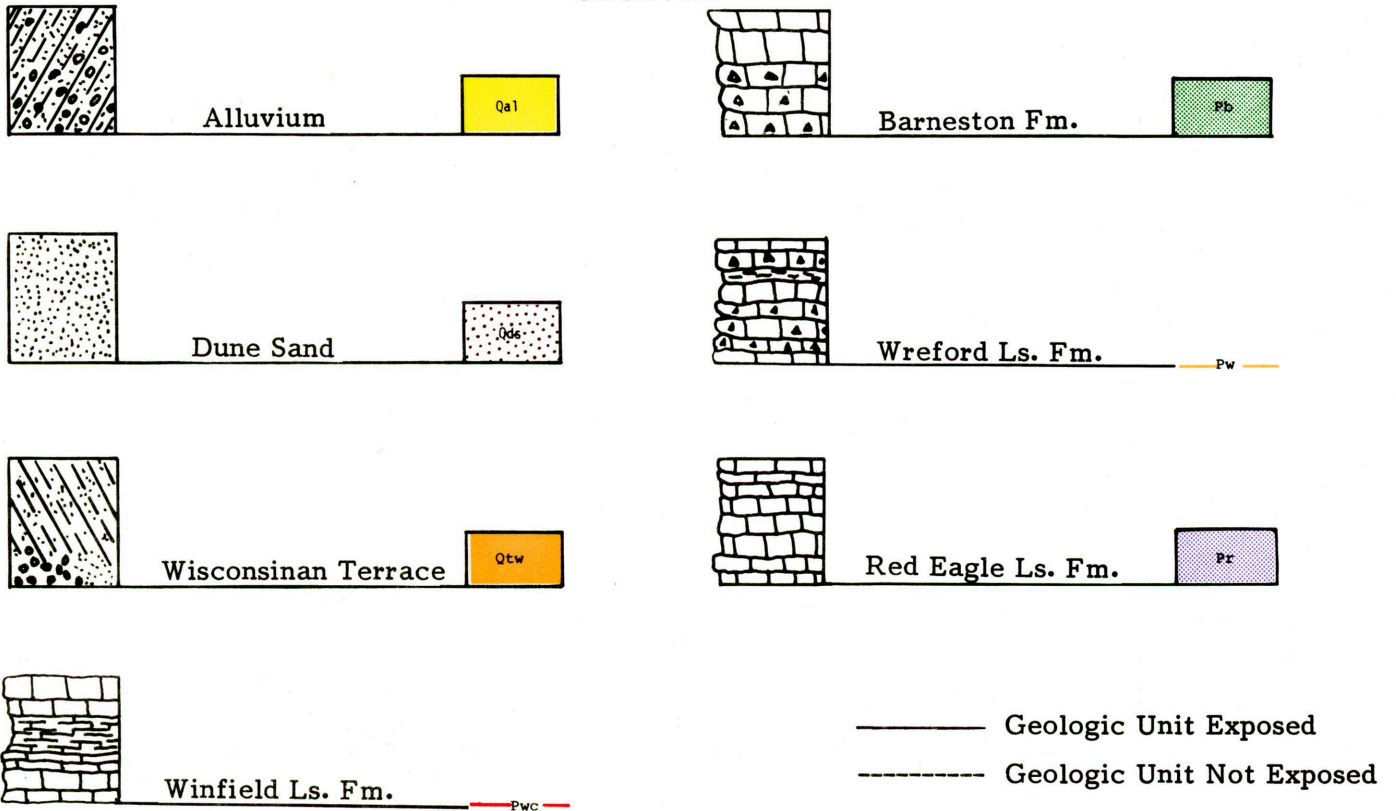
MATERIALS SITE DESIGNATIONS

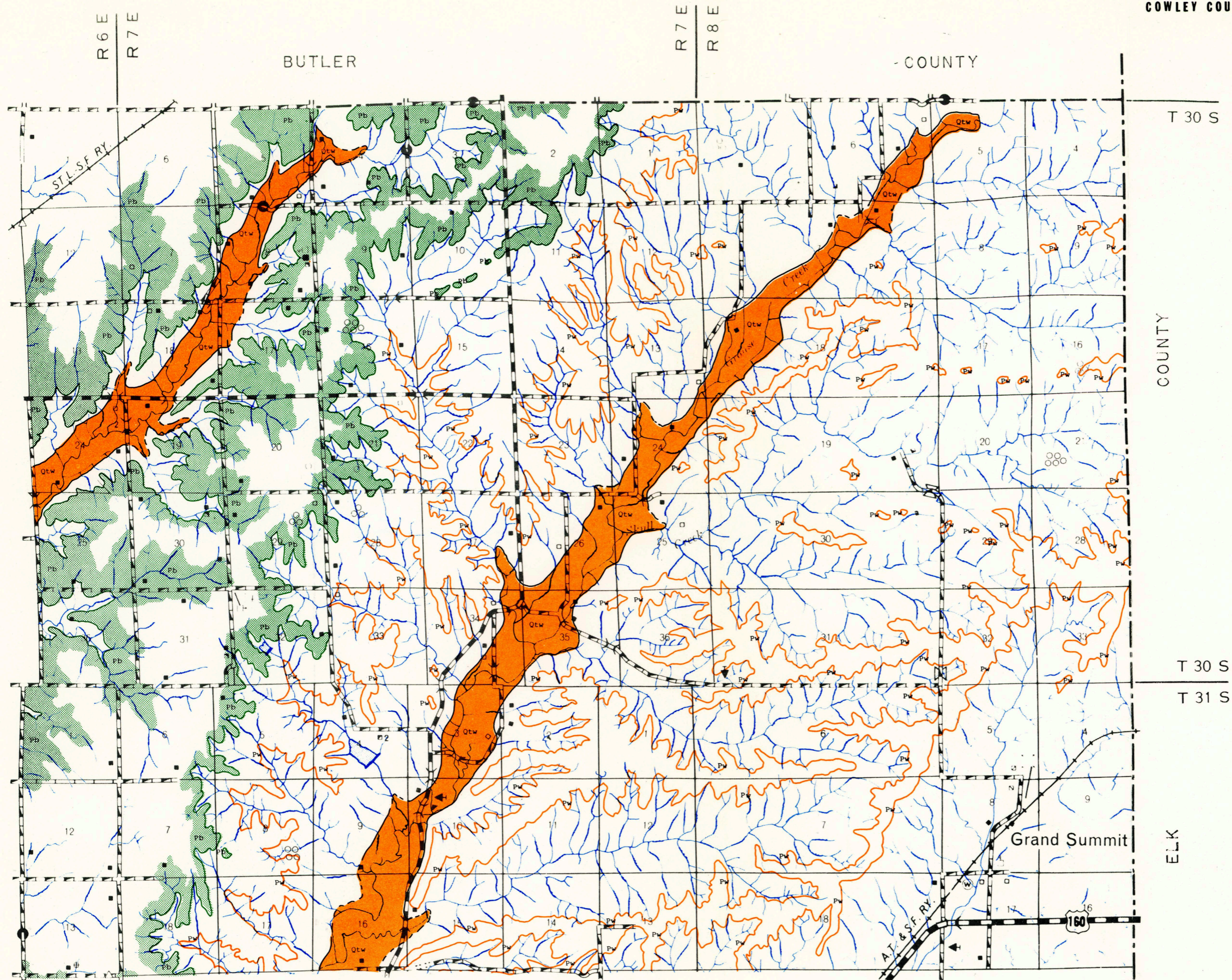
- Open Materials Sites; Sampled Page 32
- Open Materials Sites; Not Sampled Page 60
- ▼ Prospective Materials Sites; Sampled Page 76
- ◆ Prospective Materials Sites; Not Sampled Page 82



- CG Chert Gravel
- SG Sand Gravel
- LS Limestone

GEOLOGY





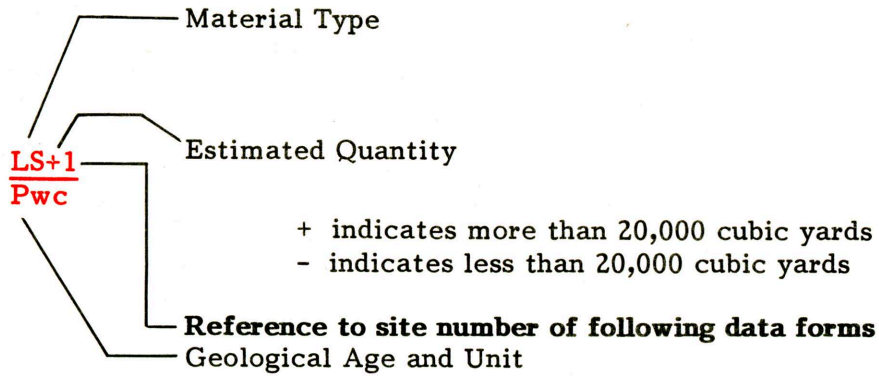
I	II	III
IV	V	VI
VII	VIII	IX
X	XI	XII

COWLEY COUNTY

LEGEND

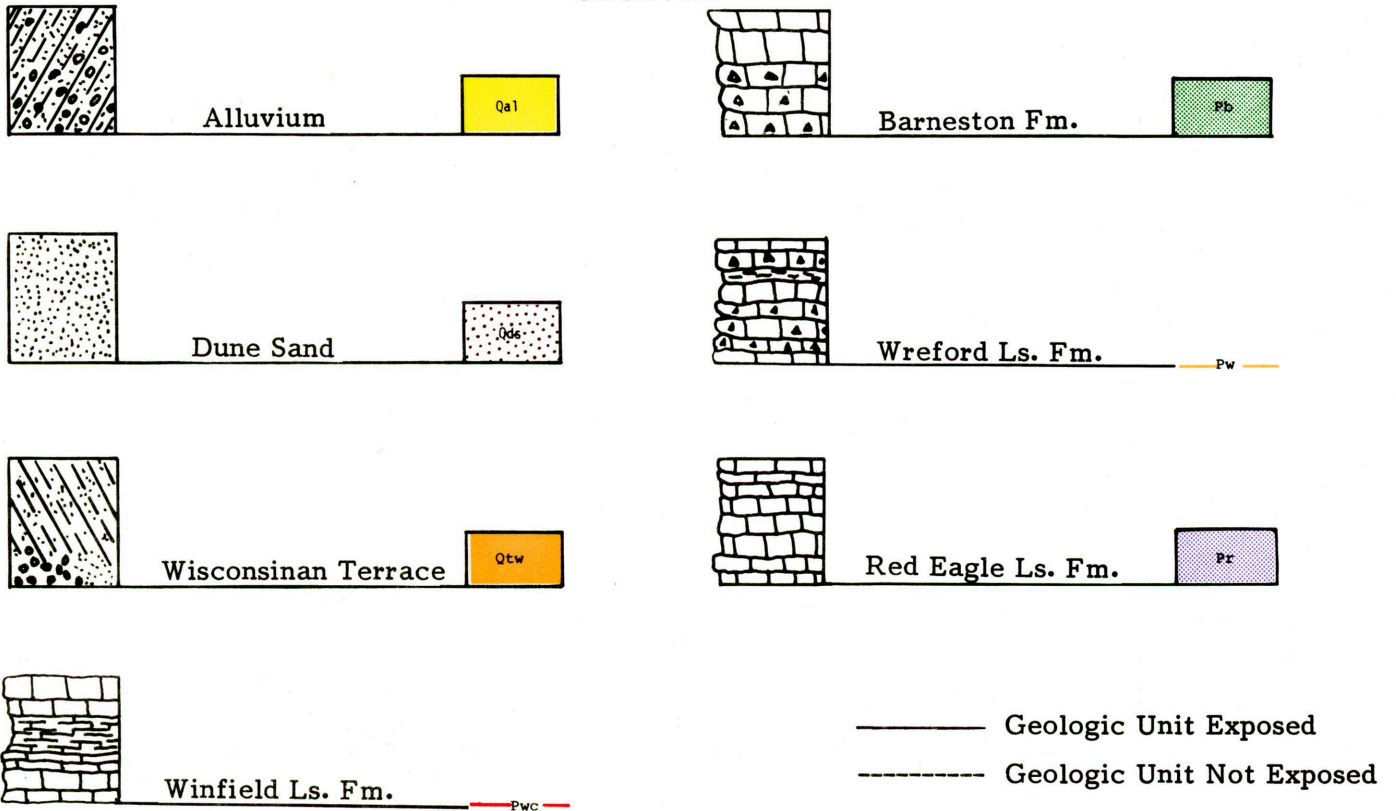
MATERIALS SITE DESIGNATIONS

- Open Materials Sites; Sampled Page 32
- Open Materials Sites; Not Sampled Page 60
- ▼ Prospective Materials Sites; Sampled Page 76
- ◆ Prospective Materials Sites; Not Sampled Page 82



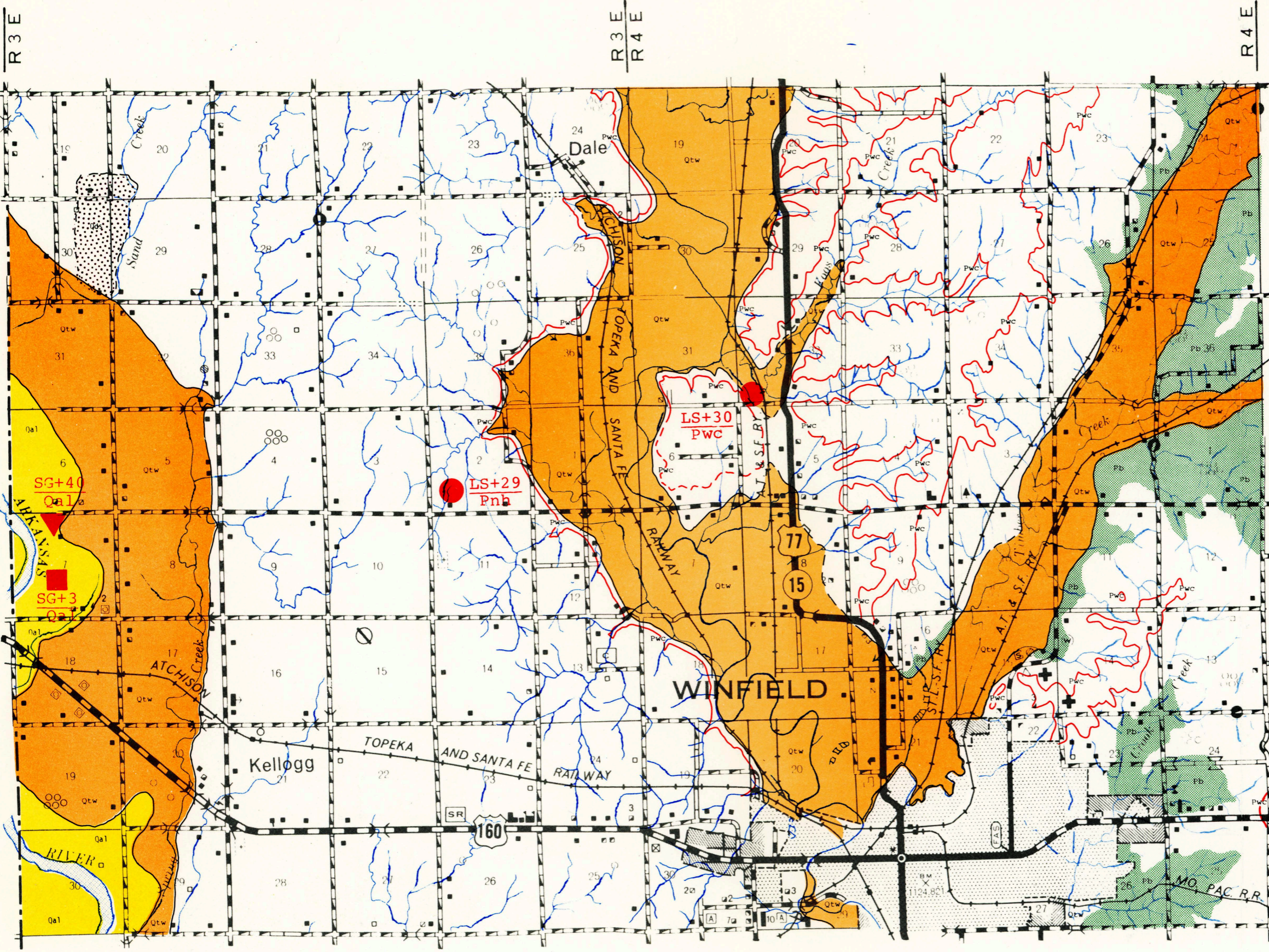
- CG Chert Gravel
- SG Sand Gravel
- LS Limestone

GEOLOGY



COUNTY

SUMNER



T 31 S
T 32 S

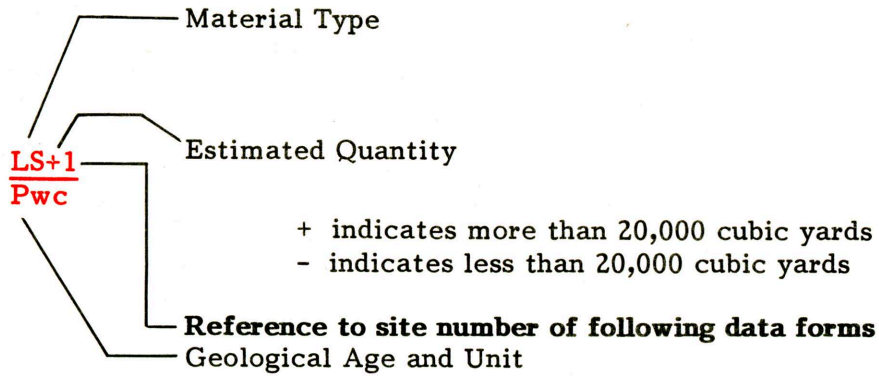
I	II	III
IV	V	VI
VII	VIII	IX
X	XI	XII

COWLEY COUNTY

LEGEND

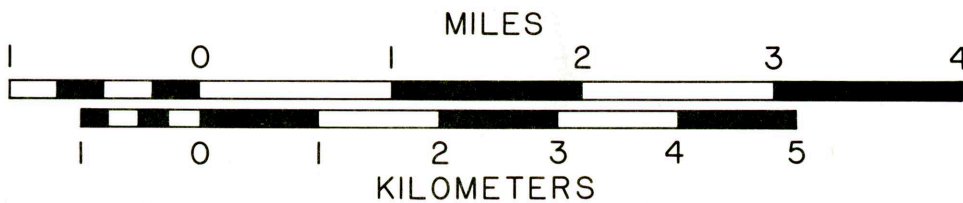
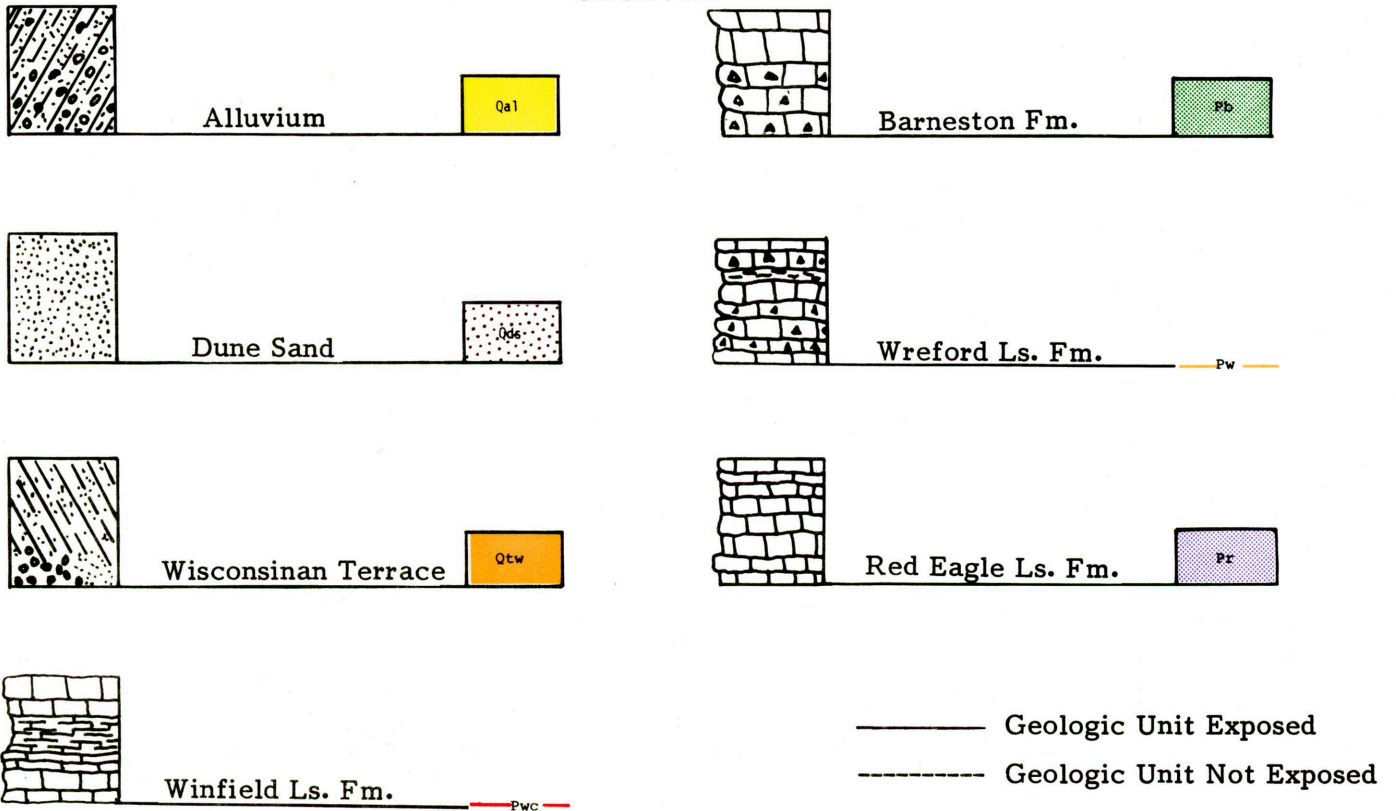
MATERIALS SITE DESIGNATIONS

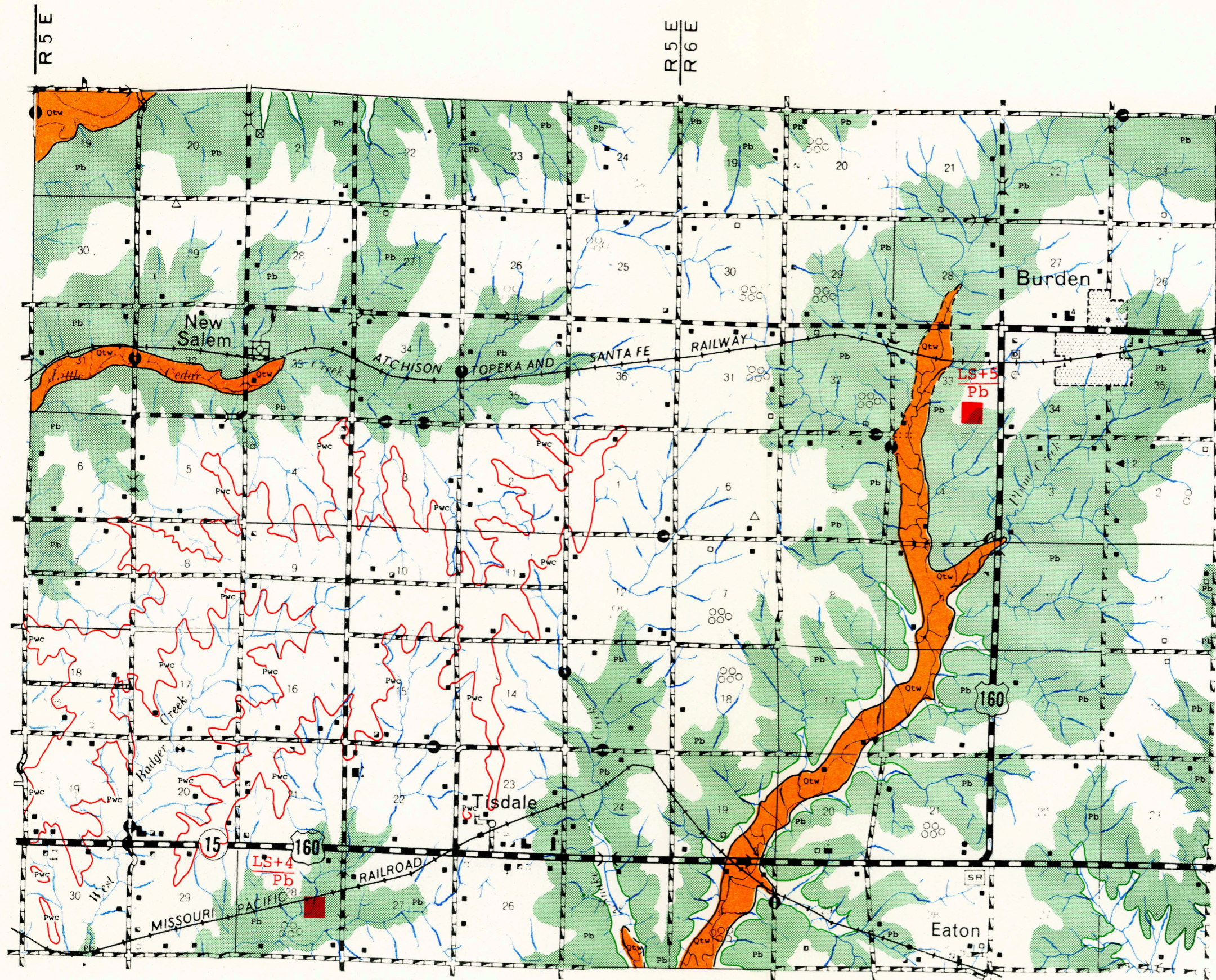
- Open Materials Sites; Sampled Page 32
- Open Materials Sites; Not Sampled Page 60
- ▼ Prospective Materials Sites; Sampled Page 76
- ◆ Prospective Materials Sites; Not Sampled Page 82



- CG Chert Gravel
- SG Sand Gravel
- LS Limestone

GEOLOGY





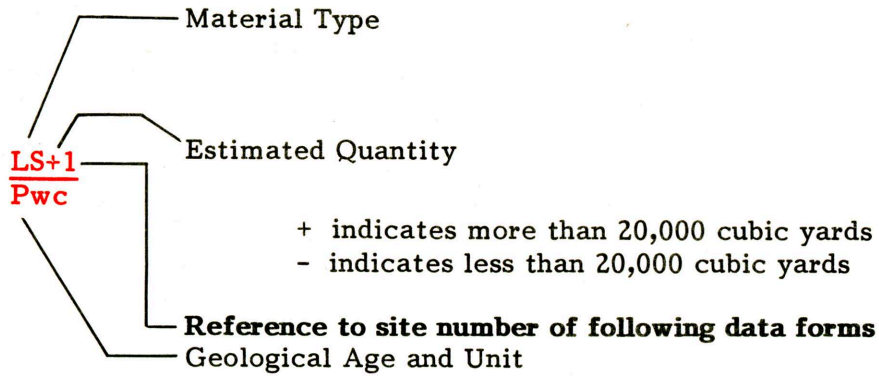
T 31 S
T 32 S

I	II	III
IV	V	VI
VII	VIII	IX
X	XI	XII

LEGEND

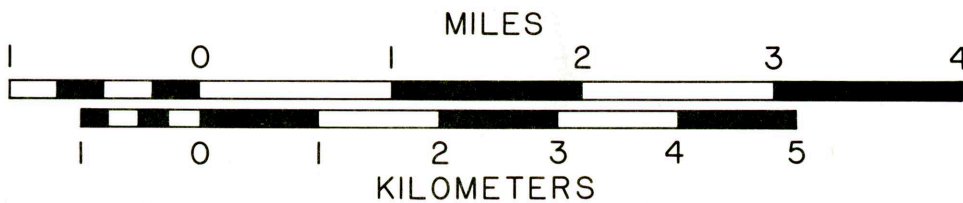
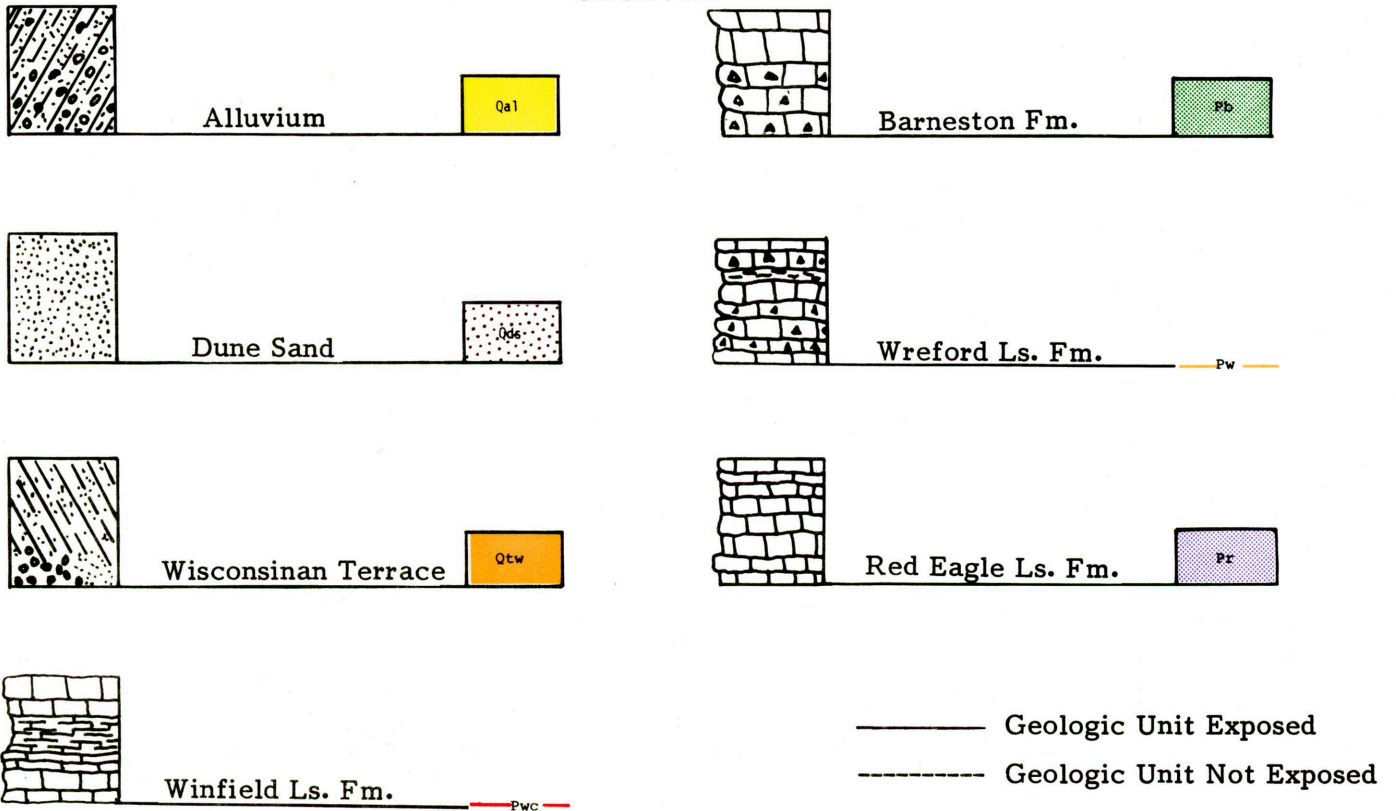
MATERIALS SITE DESIGNATIONS

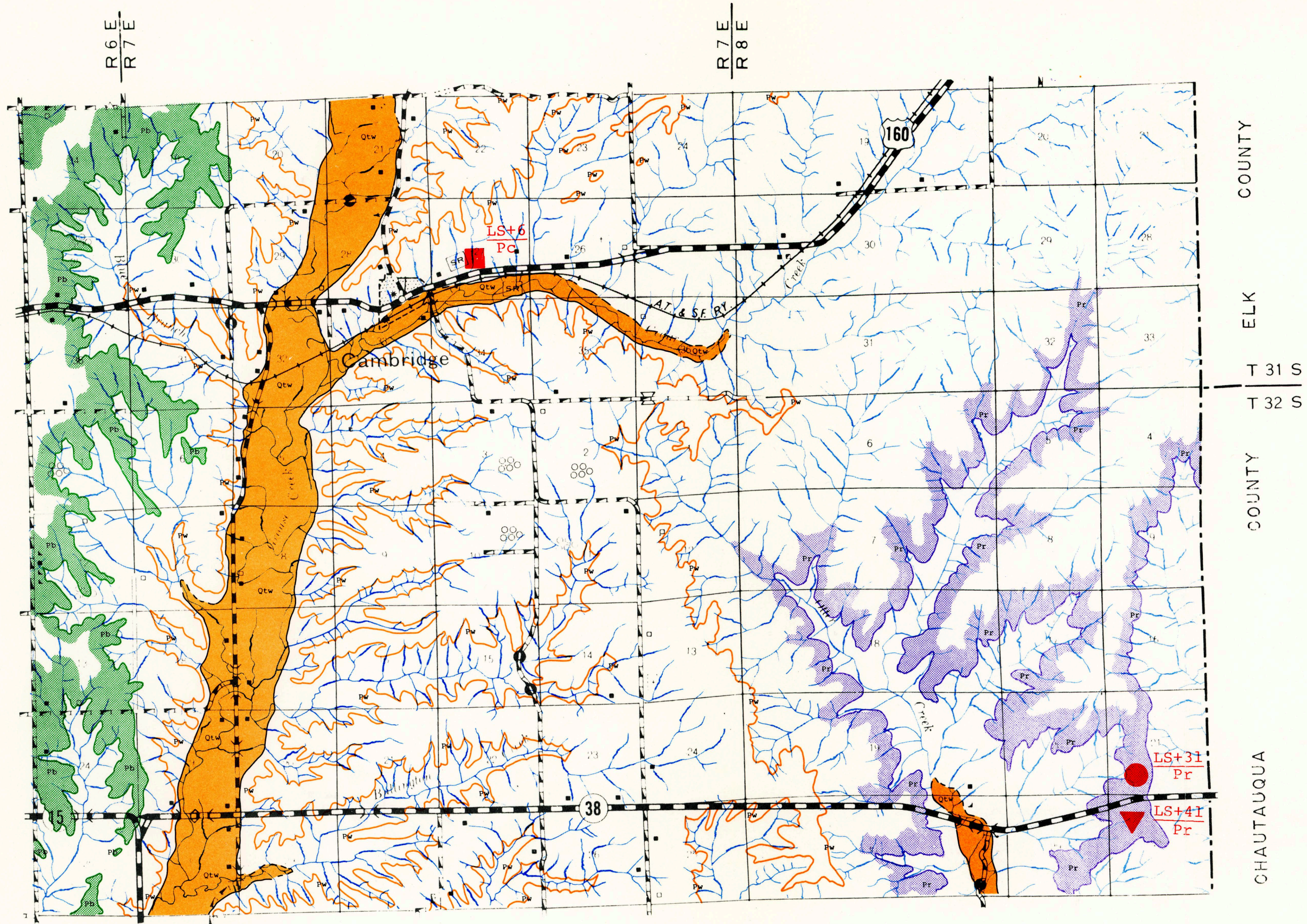
- Open Materials Sites; Sampled Page 32
- Open Materials Sites; Not Sampled Page 60
- ▼ Prospective Materials Sites; Sampled Page 76
- ◆ Prospective Materials Sites; Not Sampled Page 82



- CG Chert Gravel
- SG Sand Gravel
- LS Limestone

GEOLOGY





COUNTY
ELK
T 31 S
T 32 S
COUNTY
CHAUTAQUA

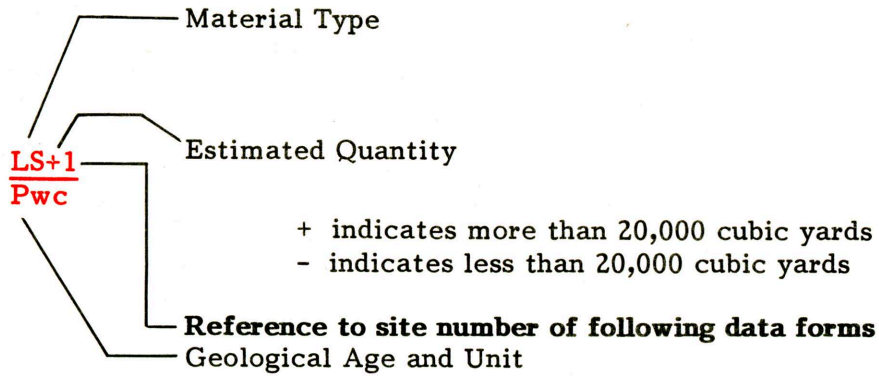
I	II	III
IV	V	VI
VII	VIII	IX
X	XI	XII

COWLEY COUNTY

LEGEND

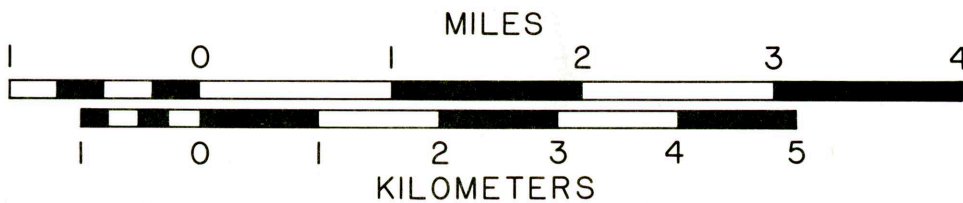
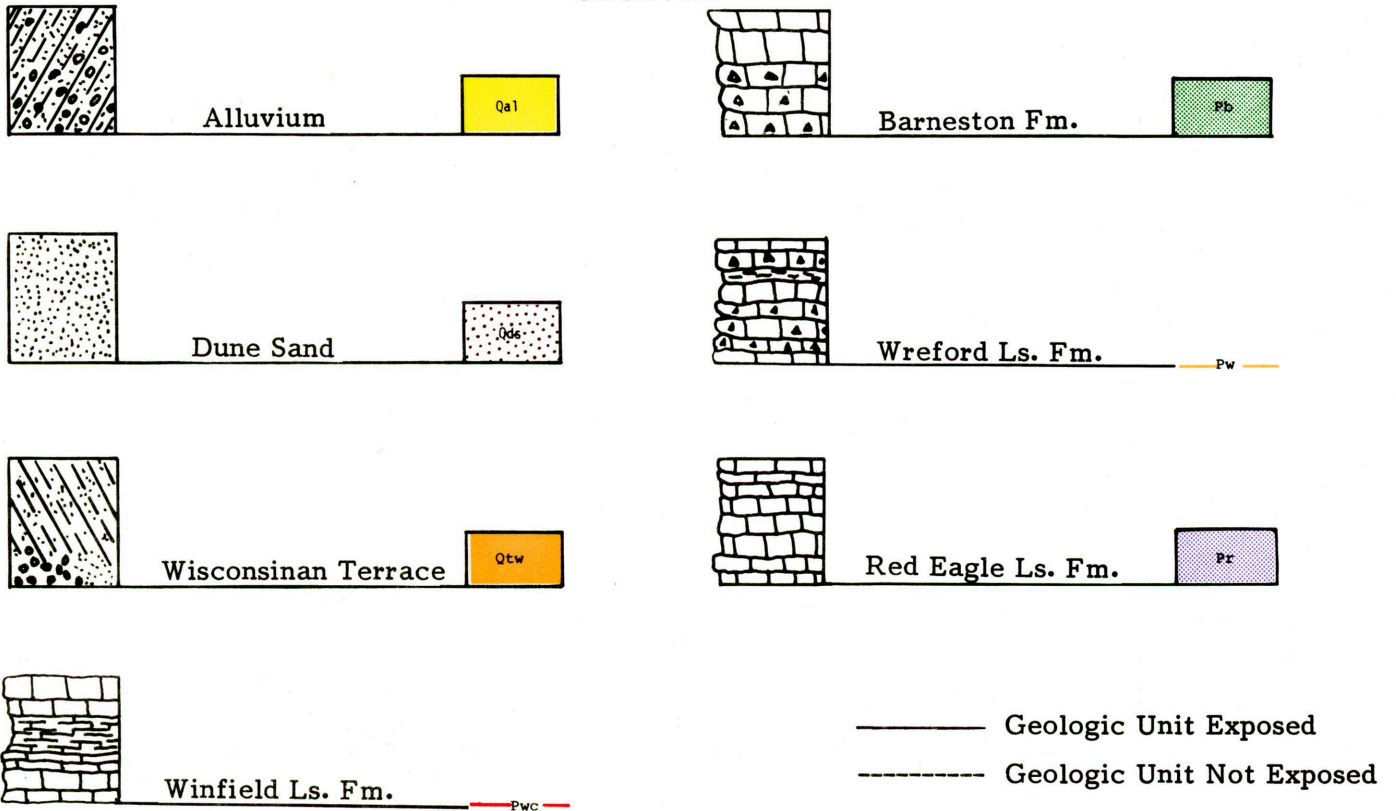
MATERIALS SITE DESIGNATIONS

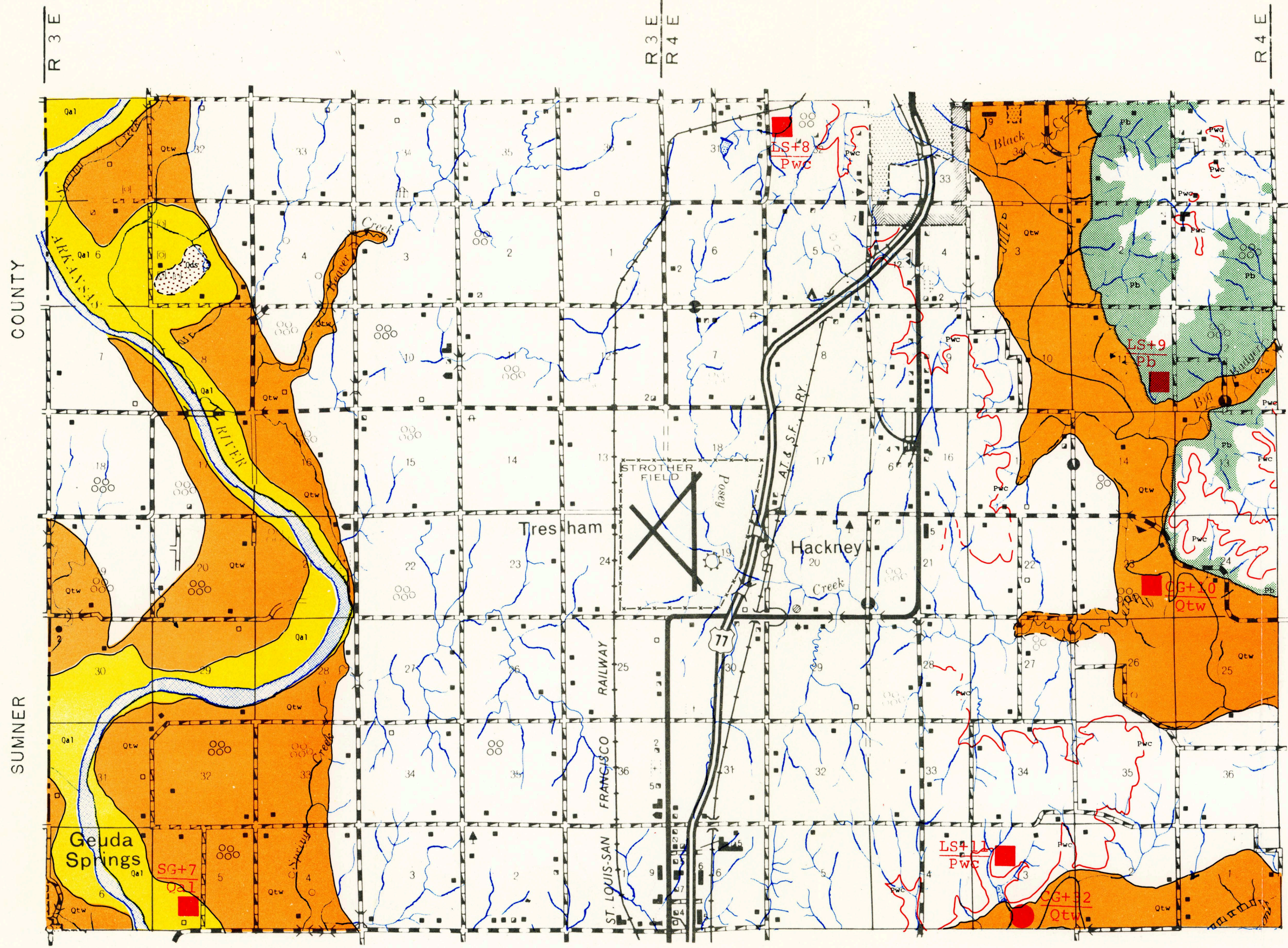
- Open Materials Sites; Sampled Page 32
- Open Materials Sites; Not Sampled Page 60
- ▼ Prospective Materials Sites; Sampled Page 76
- ◆ Prospective Materials Sites; Not Sampled Page 82



- CG Chert Gravel
- SG Sand Gravel
- LS Limestone

GEOLOGY





COUNTY

SUMNER

T 32 S
T 33 S

T 33 S
T 34 S

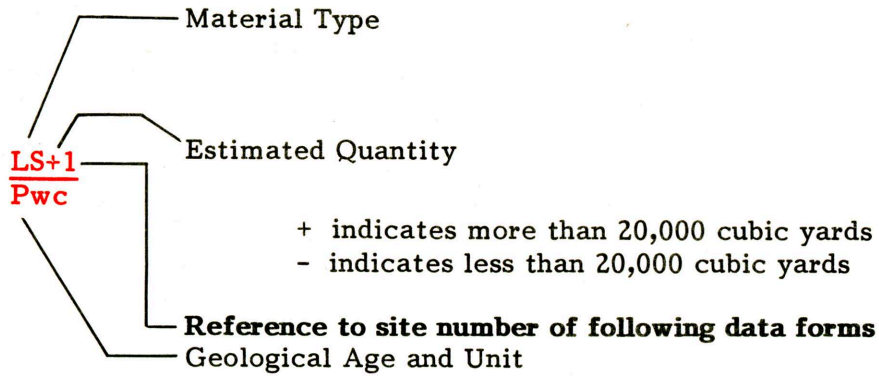
I	II	III
IV	V	VI
VII	VIII	IX
X	XI	XII

COWLEY COUNTY

LEGEND

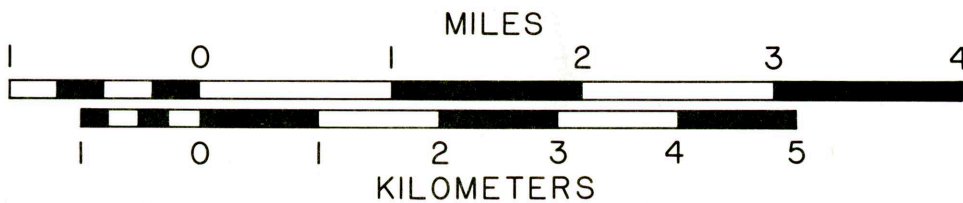
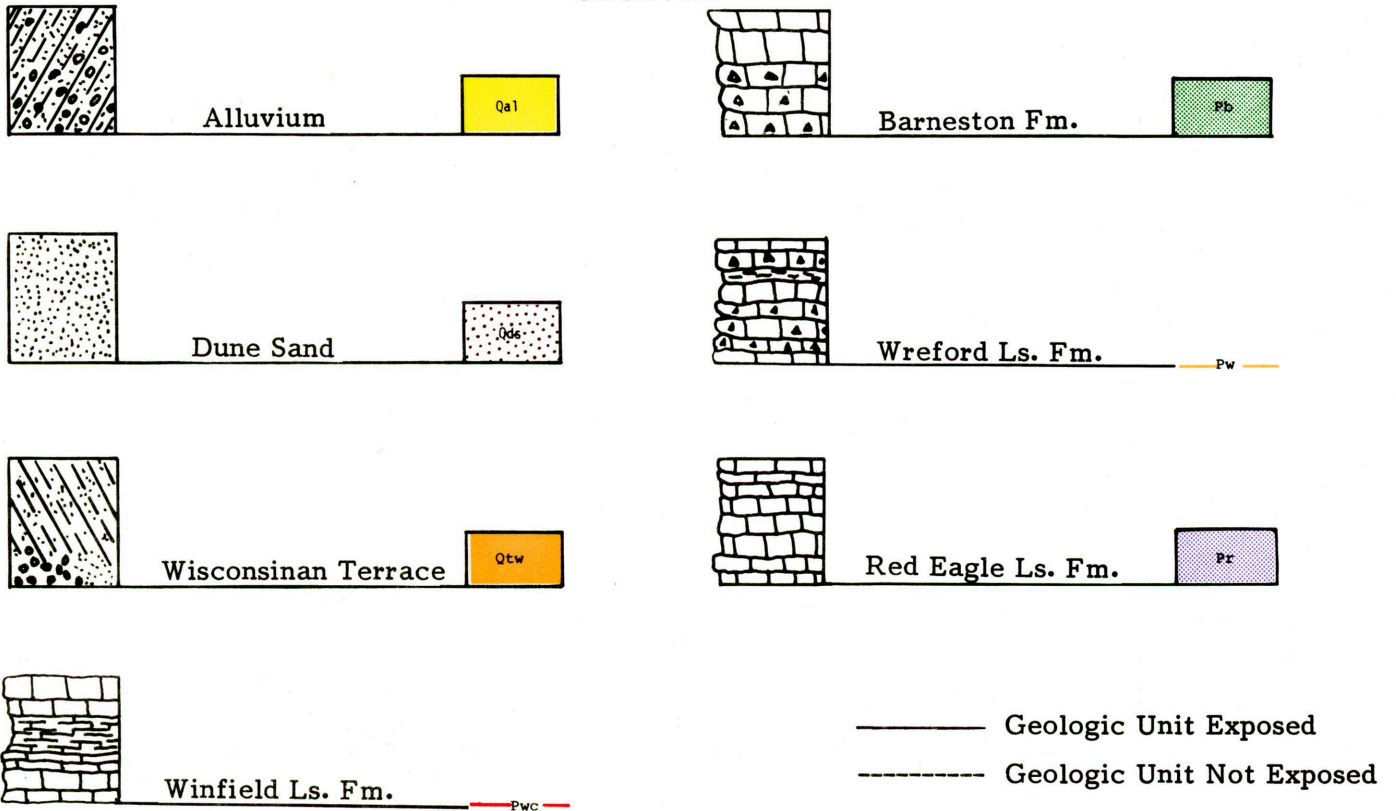
MATERIALS SITE DESIGNATIONS

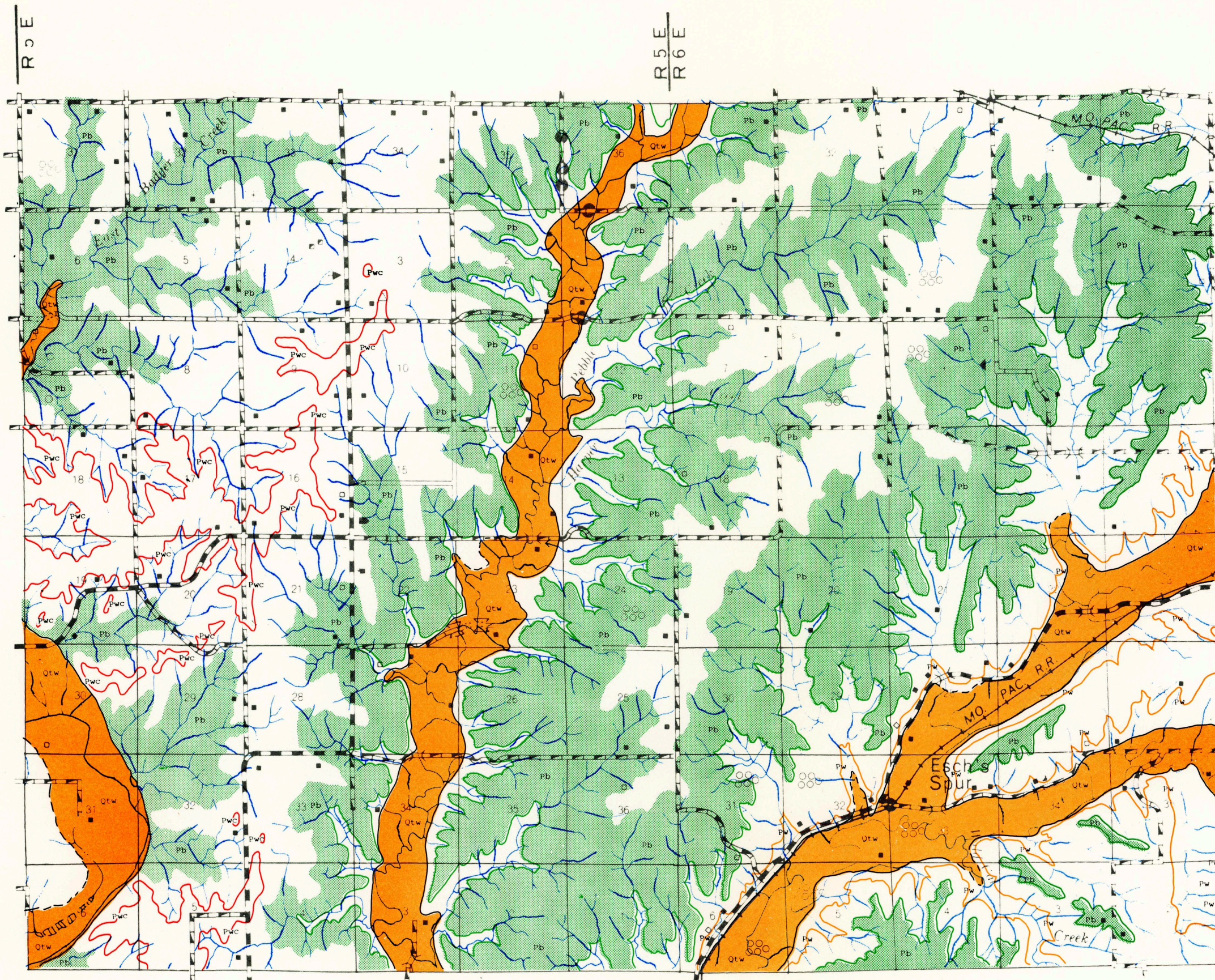
- Open Materials Sites; Sampled Page 32
- Open Materials Sites; Not Sampled Page 60
- ▼ Prospective Materials Sites; Sampled Page 76
- ◆ Prospective Materials Sites; Not Sampled Page 82



- CG Chert Gravel
- SG Sand Gravel
- LS Limestone

GEOLOGY





T 32 S
T 33 S

T 33 S
T 34 S

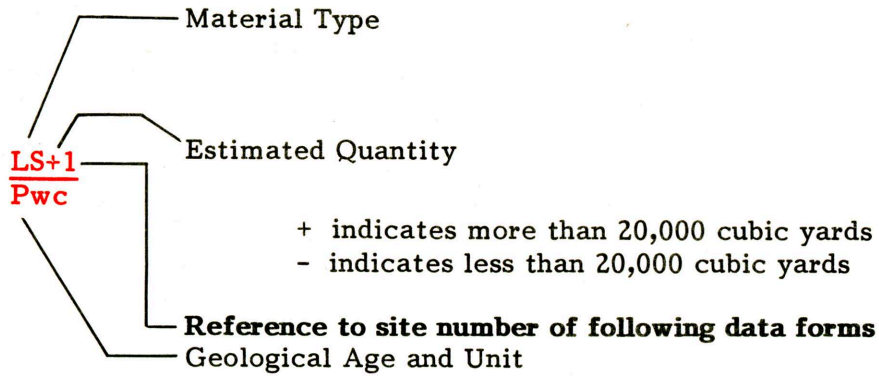
I	II	III
IV	V	VI
VII	VIII	IX
X	XI	XII

COWLEY COUNTY

LEGEND

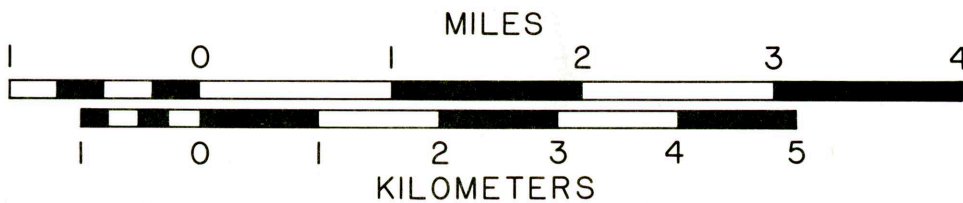
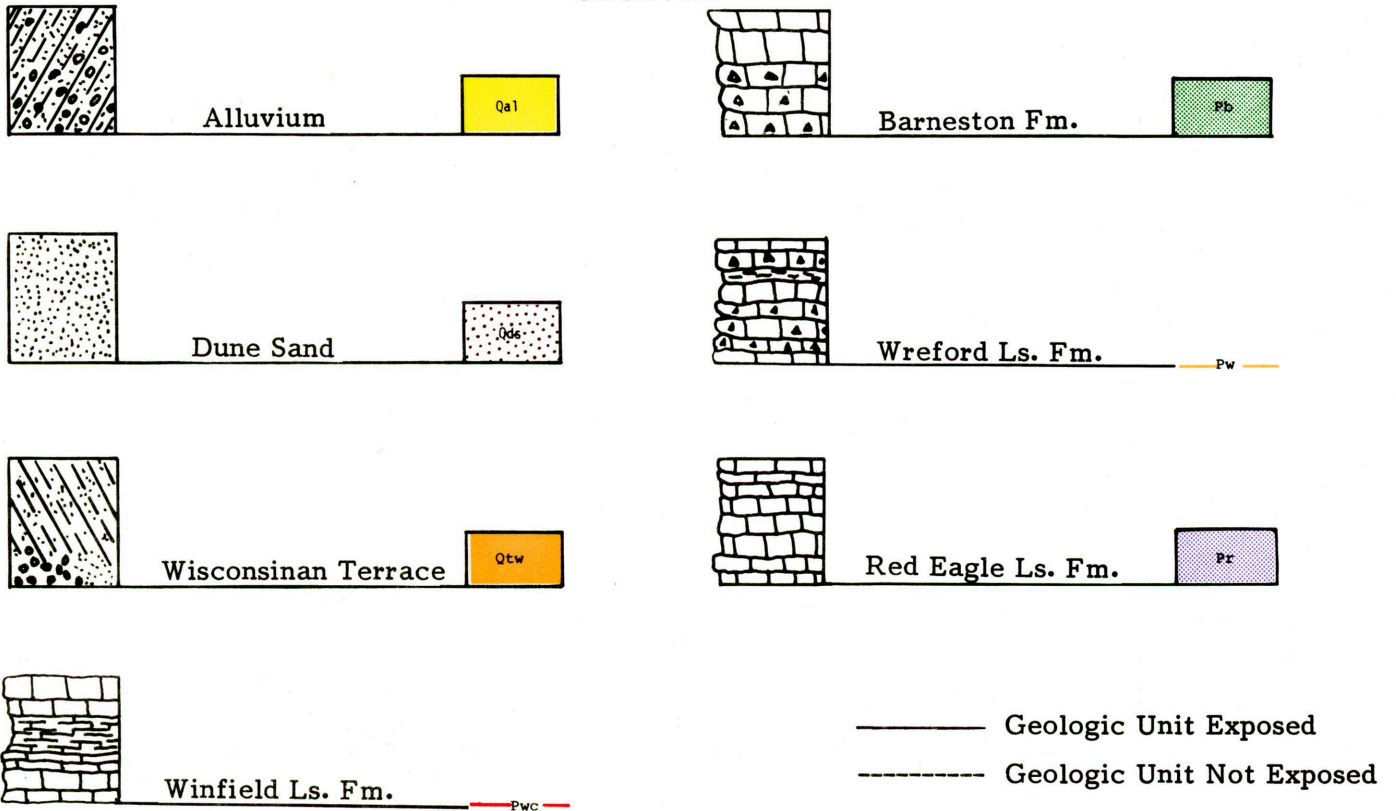
MATERIALS SITE DESIGNATIONS

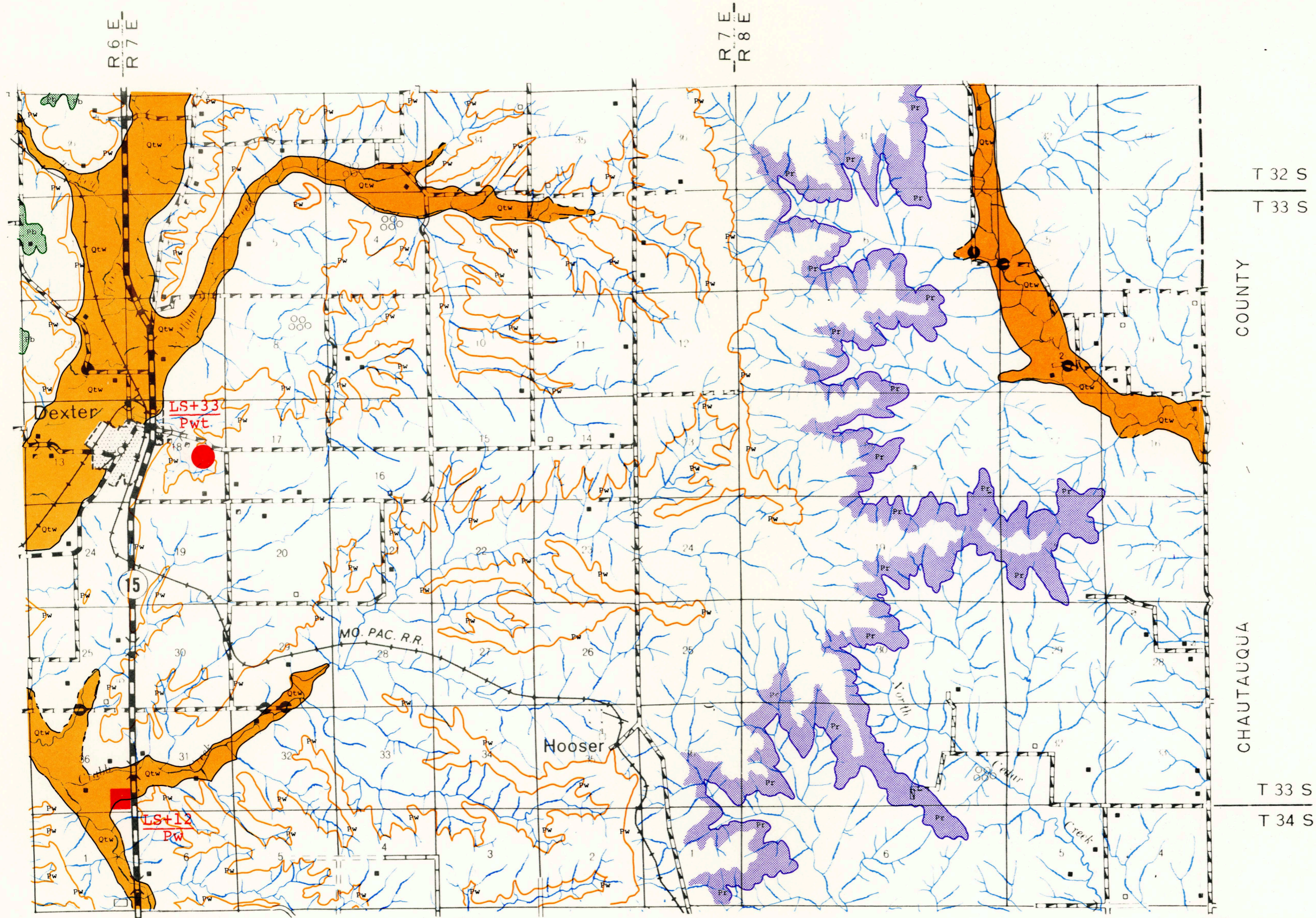
- Open Materials Sites; Sampled Page 32
- Open Materials Sites; Not Sampled Page 60
- ▼ Prospective Materials Sites; Sampled Page 76
- ◆ Prospective Materials Sites; Not Sampled Page 82



- CG Chert Gravel
- SG Sand Gravel
- LS Limestone

GEOLOGY





T 32 S

T 33 S

COUNTY

CHAUTAQUA

T 33 S

T 34 S

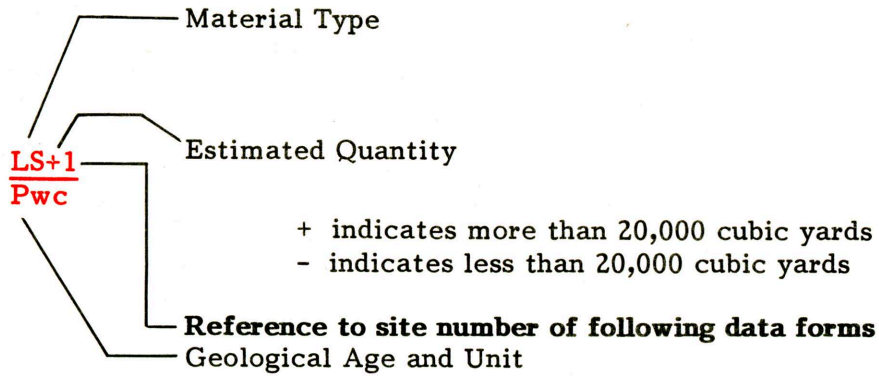
I	II	III
IV	V	VI
VII	VIII	IX
X	XI	XII

COWLEY COUNTY

LEGEND

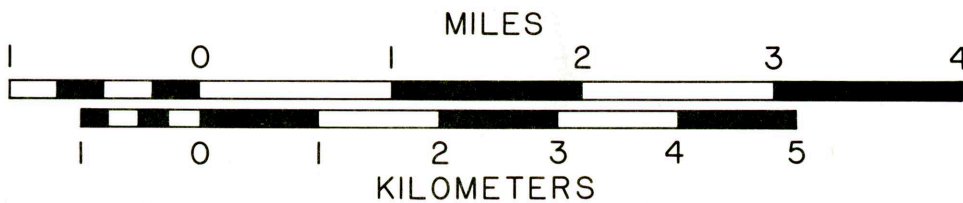
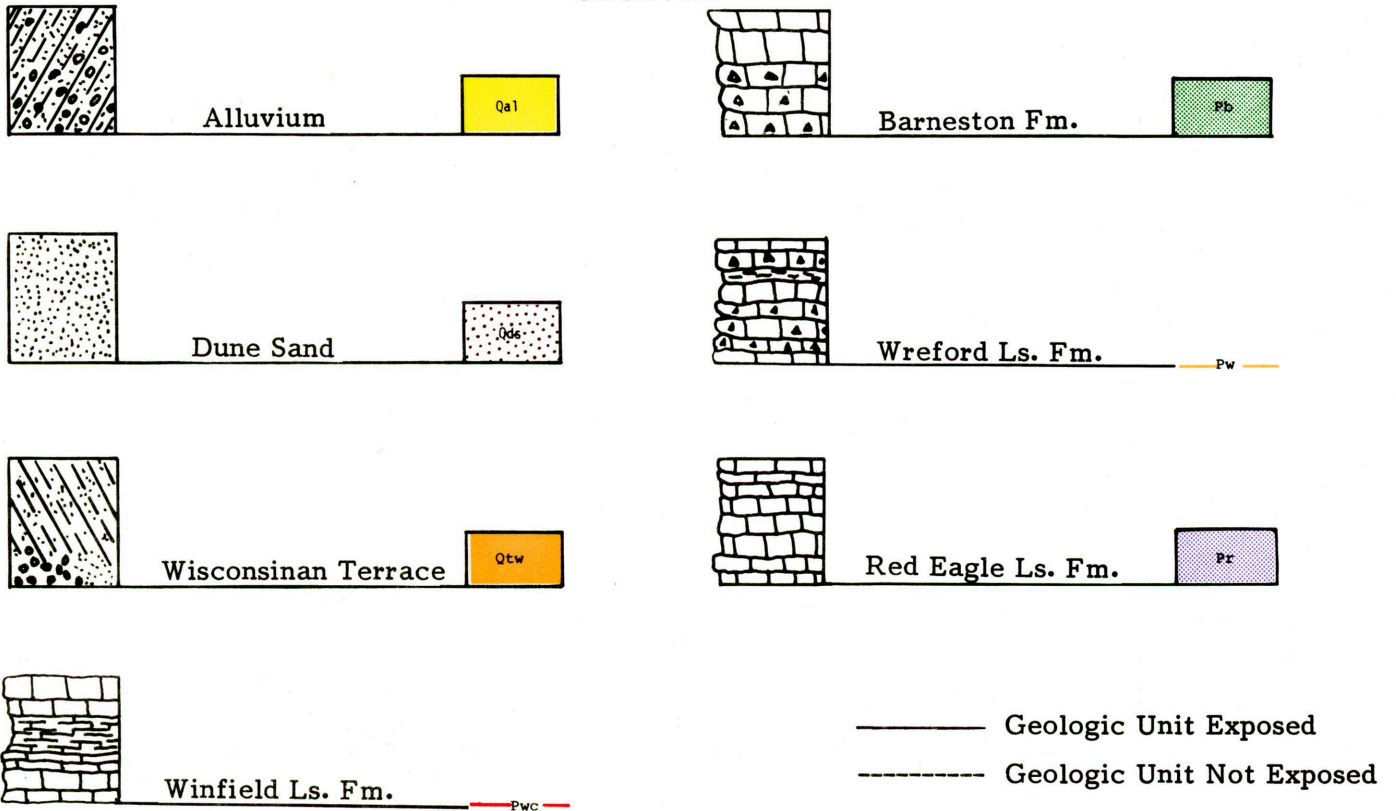
MATERIALS SITE DESIGNATIONS

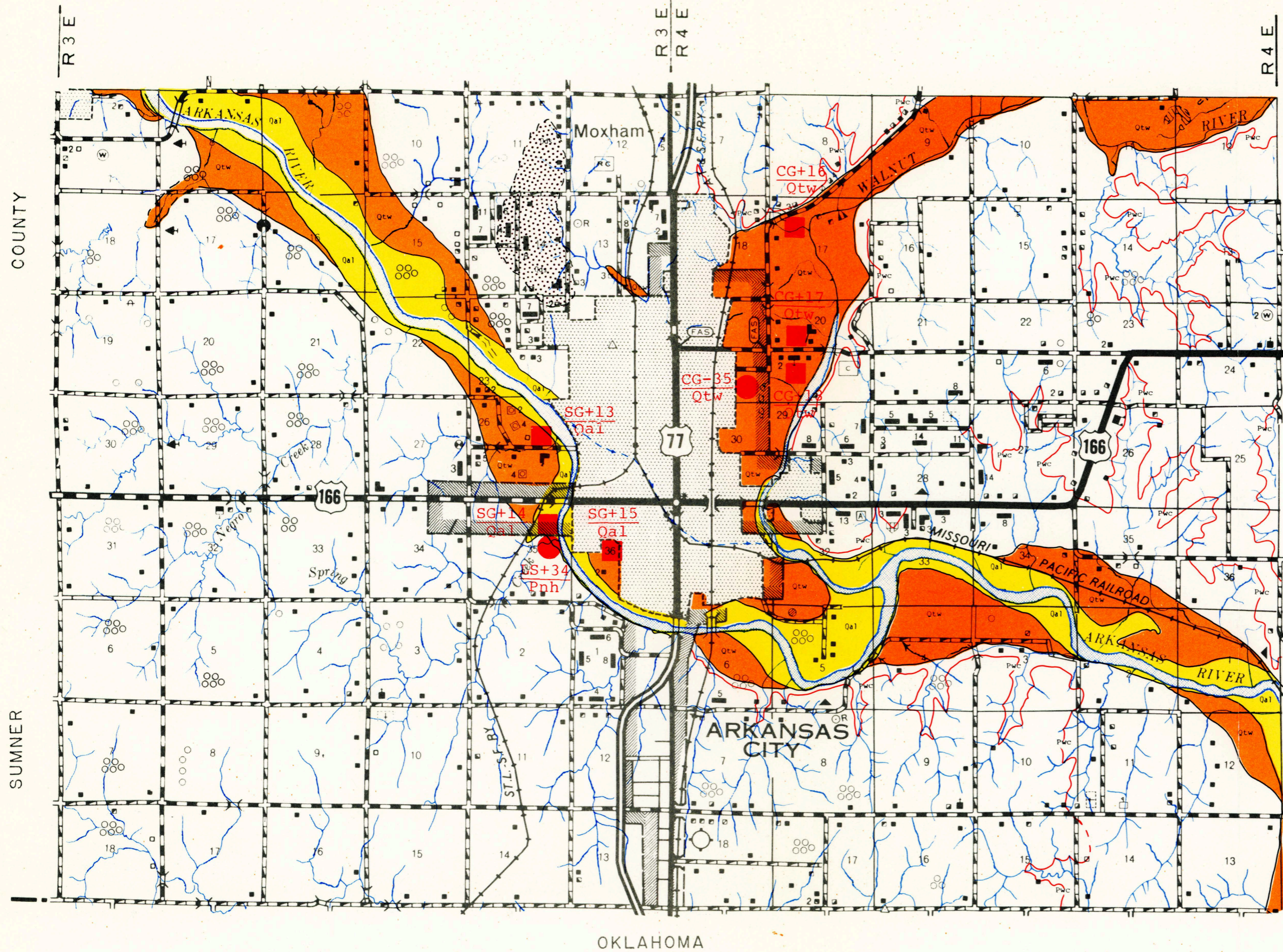
- Open Materials Sites; Sampled Page 32
- Open Materials Sites; Not Sampled Page 60
- ▼ Prospective Materials Sites; Sampled Page 76
- ◆ Prospective Materials Sites; Not Sampled Page 82



- CG Chert Gravel
- SG Sand Gravel
- LS Limestone

GEOLOGY





T 34 S
T 35 S

I	II	III
IV	V	VI
VII	VIII	IX
X	XI	XII

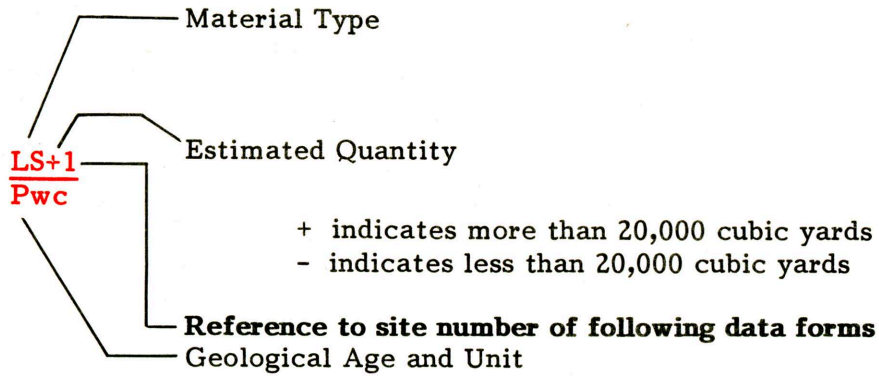
COWLEY COUNTY

OKLAHOMA

LEGEND

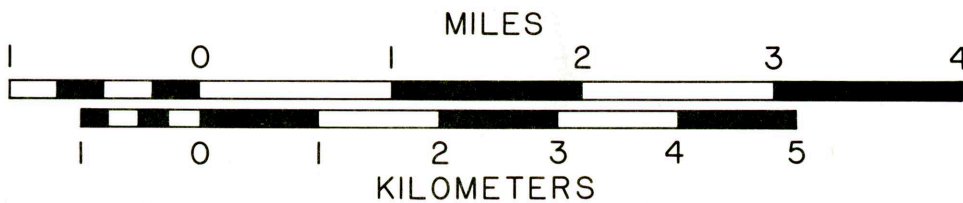
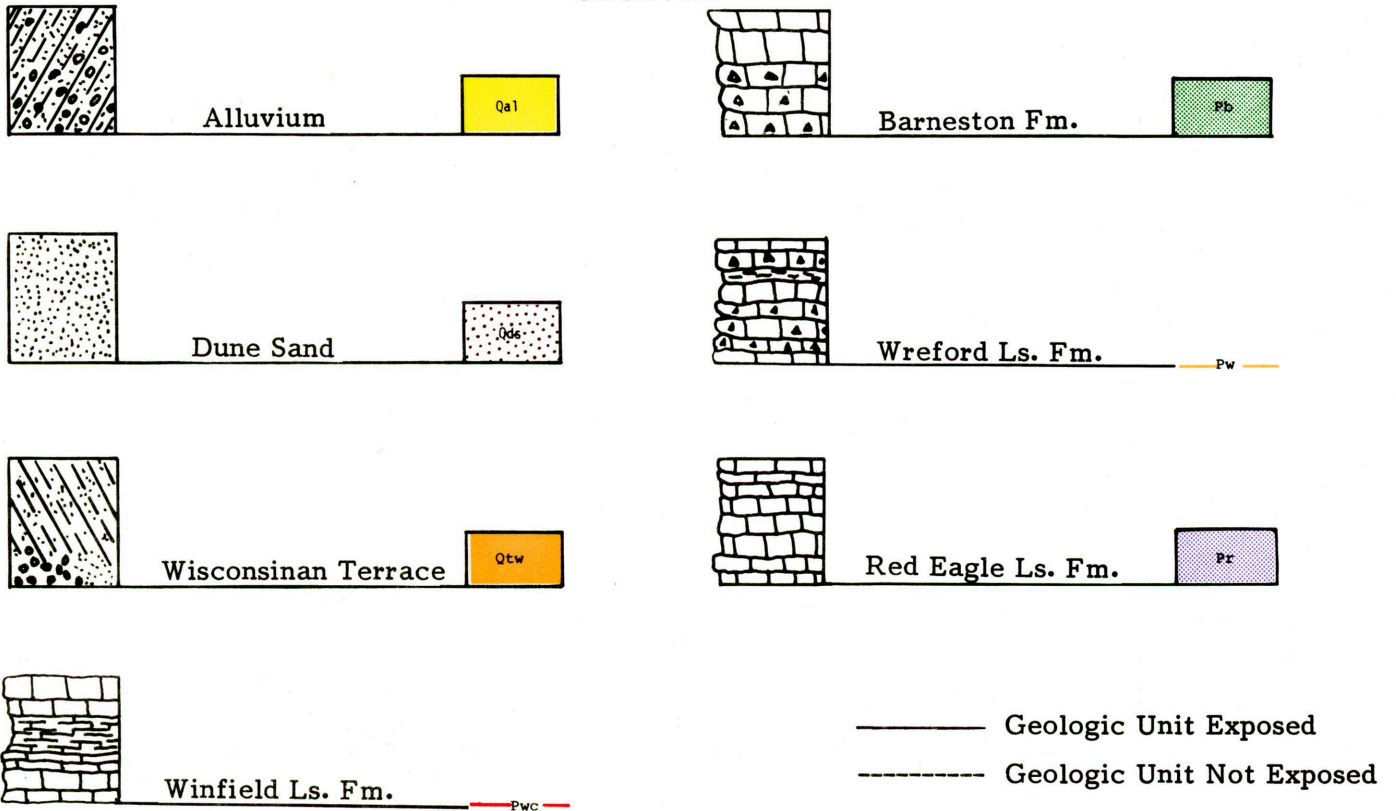
MATERIALS SITE DESIGNATIONS

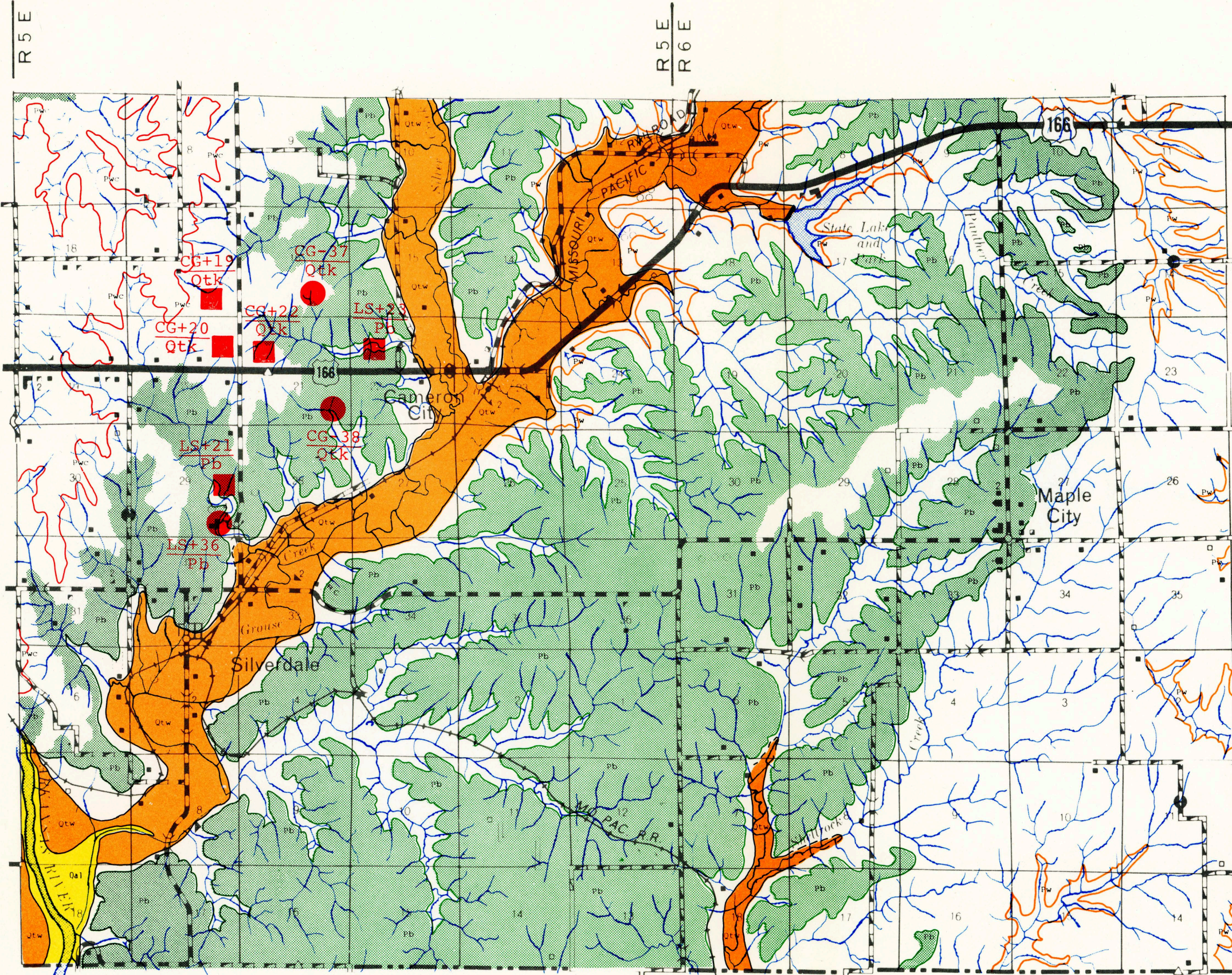
- Open Materials Sites; Sampled Page 32
- Open Materials Sites; Not Sampled Page 60
- ▼ Prospective Materials Sites; Sampled Page 76
- ◆ Prospective Materials Sites; Not Sampled Page 82



- CG Chert Gravel
- SG Sand Gravel
- LS Limestone

GEOLOGY





R 5 E

R 5 E
R 6 E

T 34 S
T 35 S

OKLAHOMA

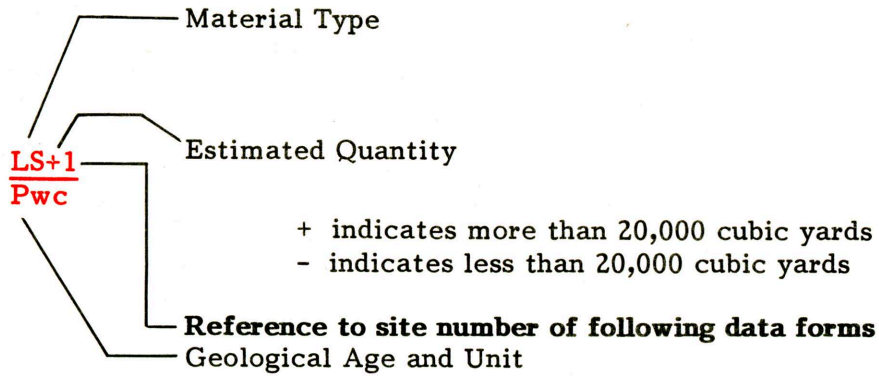
I	II	III
IV	V	VI
VII	VIII	IX
X	XI	XII

COWLEY COUNTY

LEGEND

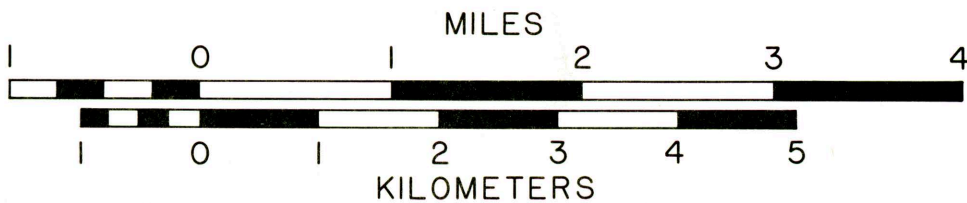
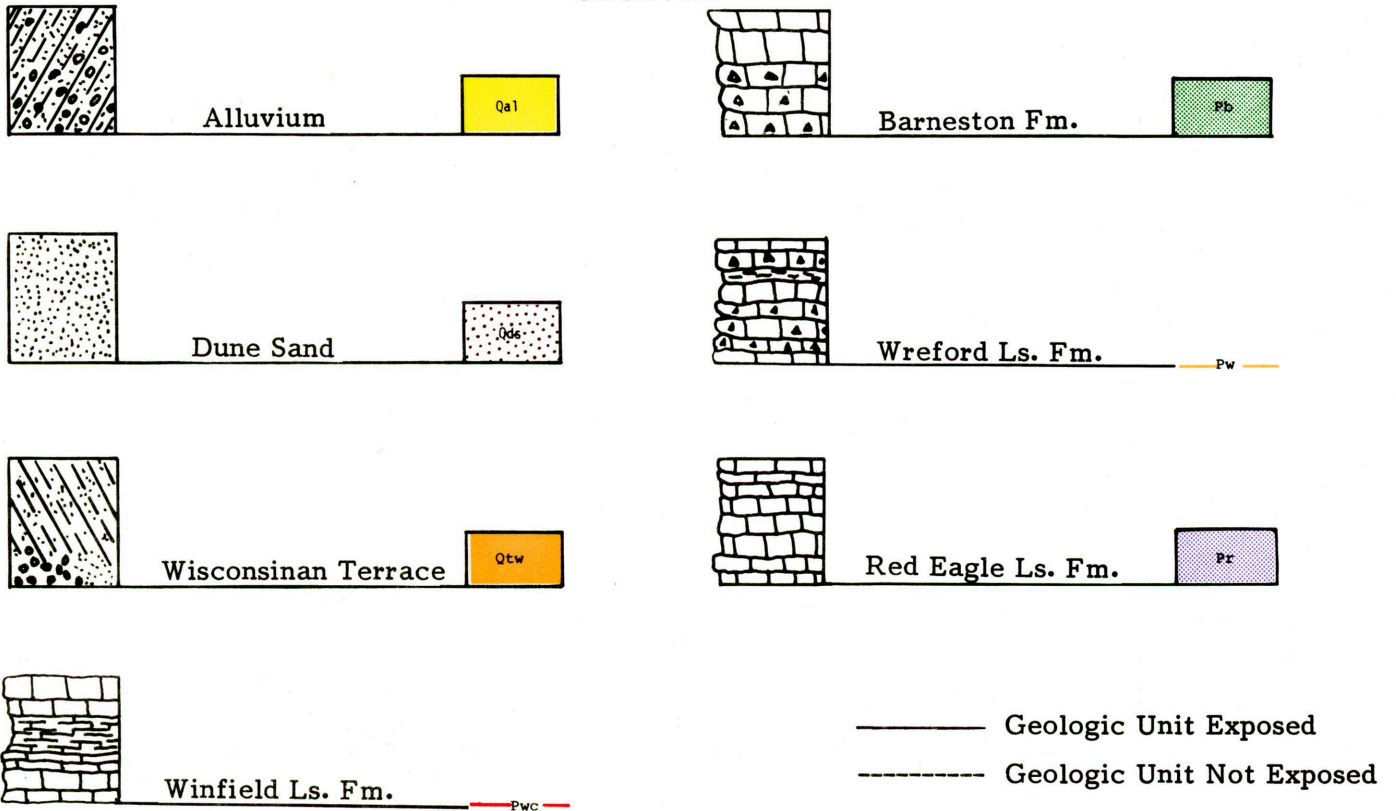
MATERIALS SITE DESIGNATIONS

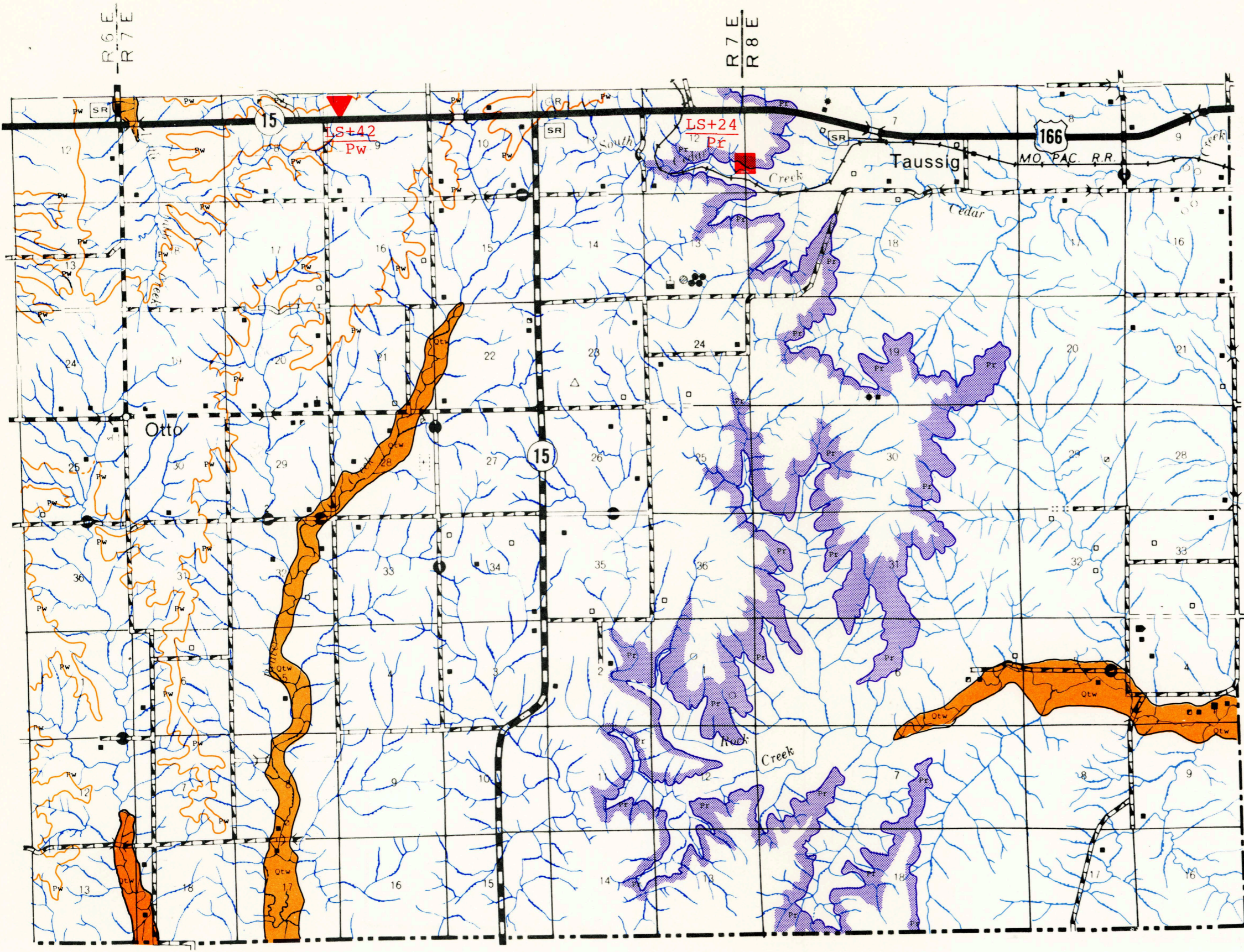
- Open Materials Sites; Sampled Page 32
- Open Materials Sites; Not Sampled Page 60
- ▼ Prospective Materials Sites; Sampled Page 76
- ◆ Prospective Materials Sites; Not Sampled Page 82



- CG Chert Gravel
- SG Sand Gravel
- LS Limestone

GEOLOGY





COUNTY

CHAUTAQUA

T 34 S
T 35 S

OKLAHOMA

I	II	III
IV	V	VI
VII	VIII	IX
X	XI	XII

COWLEY COUNTY